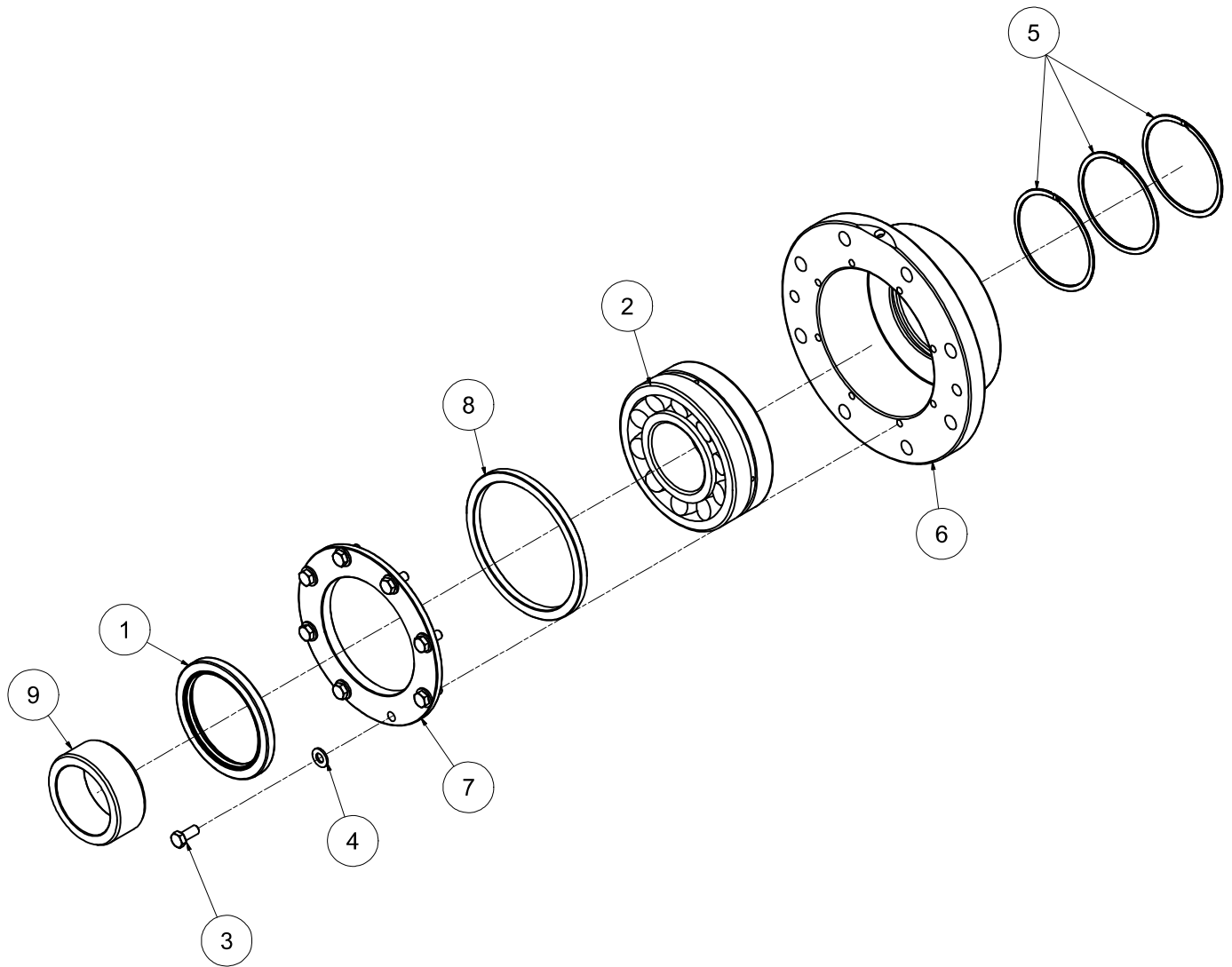


# CUTTER ASSEMBLIES

## BEARING ASSEMBLY - 10-1082, DRIVE SIDE

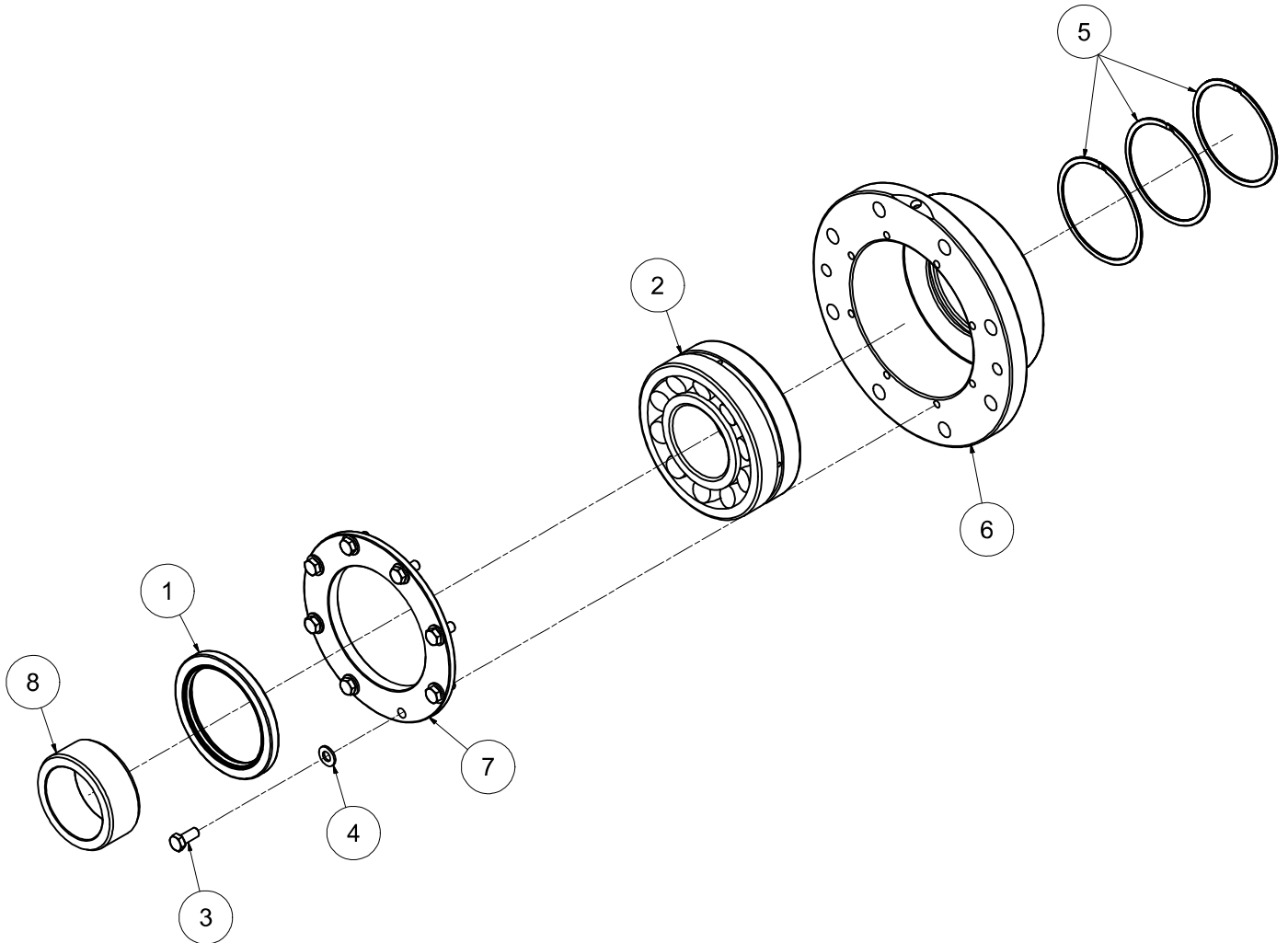


REF#	PARTS DESCRIPTION	REQ	PART#	TORQUE (ft-lbs)
1	ROTARY SEAL	1	10-0123	
2	SPHERICAL ROLLER BEARING	1	10-1072	
3	5/16-18 X 3/4 GR 8 HEX CAP SCREW, YELLOW ZINC	8	11-2266	18
4	5/16 SAE THRU HARDENED FLAT WASHER	8	11-2267	
5	SPIRAL RING	3	24-0416	
6	DRUM BEARING HOUSING	1	90-7105	
7	BEARING COVER	1	90-7109	
8	BEARING SPACER, OUTER RING	1	90-7112	
9	SPACER, INNER RACE	1	90-7114	

10-1082 Rev A

# CUTTER ASSEMBLIES

## BEARING ASSEMBLY - 10-1083, IDLE SIDE



REF#	PARTS DESCRIPTION	REQ	PART#	TORQUE (ft-lbs)
1	ROTARY SEAL	1	10-0123	
2	SPHERICAL ROLLER BEARING	1	10-1072	
3	5/16-18 X 3/4 GR 8 HEX CAP SCREW, YELLOW ZINC	8	11-2266	18
4	5/16 SAE THRU HARDENED FLAT WASHER	8	11-2267	
5	SPIRAL RING	3	24-0416	
6	DRUM BEARING HOUSING	1	90-7105	
7	BEARING COVER	1	90-7109	
8	SPACER, INNER RACE	1	90-7114	

10-1083 Rev A