

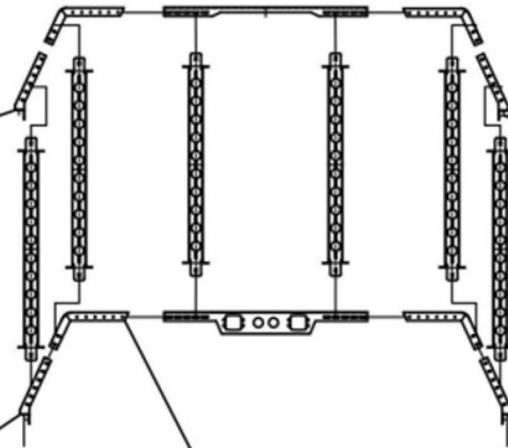
INSTALLATION



installed on the car side



installed on the car side



installed on the car side



installed on the car side

It's easiest to assemble the basic structure on the ground. This tub rack's height is adjustable and can be altered once its on the vehicle. Installation can be easier done at a lower height and later altered to suit your requirements.

STEP 1 Assemble the four legs by bolting one upper and one lower together. Using one bolt to start with. Ensure that bolt head faces the outside with flat washer. Spring washer and nut on the inside. Tighten. Repeat for all legs.

STEP 2 With a tape measure, measure the width of the upper edges of your tub to give you an idea of which holes to use on the headboard and tailgate pieces.

STEP **3** Slot the headboard and tailgate into the upper legs, adjust width to suit. Add bolts and tighten.

STEP **4** Add two support pieces to the top of the tub rack, connecting the two ends. Fit bolts washers and nuts and now the rack will free stand and is solid enough to mount to the tub.

STEP **5** Grab a mate and position the rack where you want to mount it, make sure it is square compared to the cabin. Using masking tape and a marker pen is a good way to mark your mounting points on the tub. Use a marker, mark the center of the holes on the lower legs – these are your drill points. Repeat for each leg.

STEP **6** With a mate, remove the rack from your tub. Use a marker to mark the center of the holes on the lower legs – these are your drill points. Repeat for each leg. Using masking tape is recommended.

STEP **7** A center punch can be used here to mark the middle of each hole. Using a drill, drill a small pilot hole. Enlarge to a 10mm hole to suit bolts.

STEP **8** Using a deburring tool, you can clean up any of the holes you have drilled, as well as touching up the paint to cover the fresh drilled metal to prevent rust.

STEP **9** Once paint is dry, the tub rack can be mounted again. All bolts' nuts and washers should be tightened on each leg to the tub rack. Remember to use flat washer to spread the load of the bolt.

STEP **10** With the feet tightened, you can adjust the overall height and fine tune its width.

STEP **11** Add all support pieces.

NOTE: Ensure that all legs and pieces are fitted two bolts. Periodically ensure all nuts and bolts are tight.

