

5, 7 and 10 Panel Saliva Drug Test Kits

Introduction

Many parents worry about their children becoming involved with drugs and if you use any drug it involves a risk. This risk is increased when drugs are mixed with alcohol or other drugs. The idea of testing saliva for the presence of drugs is to deter your child from using drugs. These test kits are also very useful within a workplace as they are a non-invasive form of testing for substance abuse.

5, 7 and 10 Panel Saliva Test Combinations

5 Panel Test - looks for the presence of Amphetamines (AMP), Cocaine (COC), Cannabis (parent) (THC), Ecstasy (MDMA) and Opiates (OPI).

7 Panel Test - looks for the presence of Amphetamines (AMP), Cocaine (COC), Marijuana (THC), Methamphetamines (MET), Methadone (MTD), Opiates (OPI) and Benzodiazepines (BZO).

10 Panel Test - looks for the presence of Amphetamines (AMP), Cocaine (COC), Marijuana (THC), Ecstasy (MDMA), Methamphetamines (MET), Spice (K2), Opiates (OPI), Benzodiazepines (BZO), Ketamine (KET) and Cotinine (COT).

Methamphetamines are part of the amphetamine family of drugs and so will normally prove positive for ecstasy (Es).

Drugs in the workplace

Drugs can affect the brain and the body in a number of ways and this may affect the employee's performance at work even if the misuse takes place outside the place of work. As an employer you have a duty to ensure as far as reasonably possible that your employees are not a danger to other employees or the general public by consuming drugs of abuse.

Legalities

If you are an employer wanting to test staff for drugs of abuse it is important that you have a policy in place, warning staff that they may be subject to random drug tests and that the use of drugs or being under the influence of drugs in the workplace is a dismissible offence. If one of your employees has a drug problem you should make every effort to help them, and encourage them to seek professional help. If drug abuse is a common problem in your work place it may be in your best interest to begin a drug awareness programme for staff and managers.

Pack contents

Foil pouch containing the drug test panel Foil pouch containing plastic collection tube
Plastic sealed pouch containing saliva collector Instructions

When should I do the test?

This test can be done at any time.

Precautions

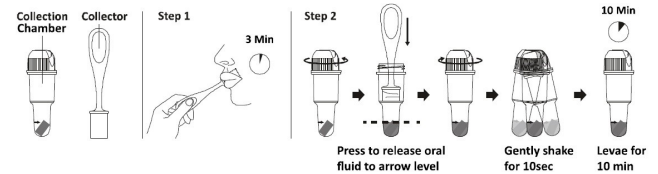
- Do not use this test beyond the expiry date on the foil pouch or if the pouch has been opened.
- Due to the sensitive nature of this drugs test, you must be careful when carrying out the test to avoid contamination and thus inaccurate test results. Please read these instructions carefully before beginning the test.**
- Do not place anything in the mouth including food, drink, gum or tobacco products for at least 10 minutes prior to testing.

Test Procedure

Allow the test cassette and specimen to reach room temperature (15-30°C) prior to testing.

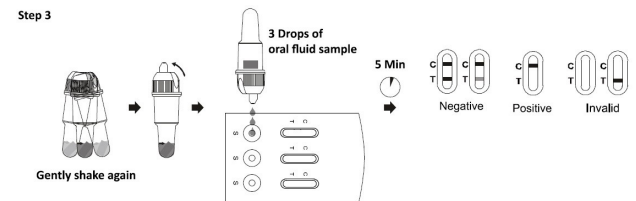
Sample Collection

- Remove the collector from the sealed pouch and collect oral fluid specimen as follows:
- Important:** Place the tongue against the upper and lower jaws and roots to enrich the oral fluid before collection. Insert the sponge end into the mouth, actively swab around the gums on both sides of the mouth and under the tongue and chew the sponge tenderly, place the sponge end under the tongue for a total of 2-3 minutes until the sponge becomes fully saturated.
- Gently pressing the sponge between the tongue and teeth will assist saturation. No hard spots should be felt on the sponge when saturated.
- (Step 2)** Take the collection chamber out of the sealed pouch and unscrew the top.
- Remove the saturated collector from the mouth and place it into the collection chamber. Press the sponge fully against the strainer to release the sample filling the chamber up to the arrow mark. Screw the top back on tightly and discard the collector.
- Gently shake the collection chamber for 10 seconds and leave it to rest for 10 minutes.



Carrying out the Test

- Take the test cassette out from sealed pouch, place it on a clean and level surface.
- (Step 3)** Again gently shake the collection chamber for 10 seconds and then push open the clear tip, invert it and then transfer 3 drops of oral fluid sample (approximately 120 µL) into each specimen well of the test cassette by gently squeezing the base of the tube (the end with the arrow).
- Start the timer and wait for the coloured lines to appear.
- Read results at 5 minutes. Results read after 15 minutes may be inaccurate.



5, 7 and 10 Panel Saliva Drug Test Kits

Introduction

Many parents worry about their children becoming involved with drugs and if you use any drug it involves a risk. This risk is increased when drugs are mixed with alcohol or other drugs. The idea of testing saliva for the presence of drugs is to deter your child from using drugs. These test kits are also very useful within a workplace as they are a non-invasive form of testing for substance abuse.

5, 7 and 10 Panel Saliva Test Combinations

5 Panel Test - looks for the presence of Amphetamines (AMP), Cocaine (COC), Cannabis (parent) (THC), Ecstasy (MDMA) and Opiates (OPI).

7 Panel Test - looks for the presence of Amphetamines (AMP), Cocaine (COC), Marijuana (THC), Methamphetamines (MET), Methadone (MTD), Opiates (OPI) and Benzodiazepines (BZO).

10 Panel Test - looks for the presence of Amphetamines (AMP), Cocaine (COC), Marijuana (THC), Ecstasy (MDMA), Methamphetamines (MET), Spice (K2), Opiates (OPI), Benzodiazepines (BZO), Ketamine (KET) and Cotinine (COT).

Methamphetamines are part of the amphetamine family of drugs and so will normally prove positive for ecstasy (Es).

Drugs in the workplace

Drugs can affect the brain and the body in a number of ways and this may affect the employee's performance at work even if the misuse takes place outside the place of work. As an employer you have a duty to ensure as far as reasonably possible that your employees are not a danger to other employees or the general public by consuming drugs of abuse.

Legalities

If you are an employer wanting to test staff for drugs of abuse it is important that you have a policy in place, warning staff that they may be subject to random drug tests and that the use of drugs or being under the influence of drugs in the workplace is a dismissible offence. If one of your employees has a drug problem you should make every effort to help them, and encourage them to seek professional help. If drug abuse is a common problem in your work place it may be in your best interest to begin a drug awareness programme for staff and managers.

Pack contents

Foil pouch containing the drug test panel Foil pouch containing plastic collection tube
Plastic sealed pouch containing saliva collector Instructions

When should I do the test?

This test can be done at any time.

Precautions

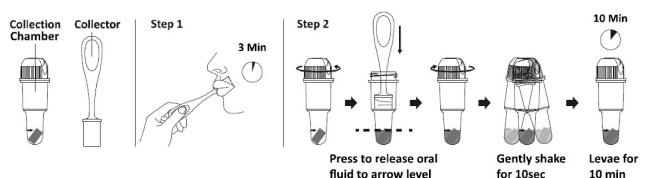
- Do not use this test beyond the expiry date on the foil pouch or if the pouch has been opened.
- Due to the sensitive nature of this drugs test, you must be careful when carrying out the test to avoid contamination and thus inaccurate test results. Please read these instructions carefully before beginning the test.**
- Do not place anything in the mouth including food, drink, gum or tobacco products for at least 10 minutes prior to testing.

Test Procedure

Allow the test cassette and specimen to reach room temperature (15-30°C) prior to testing.

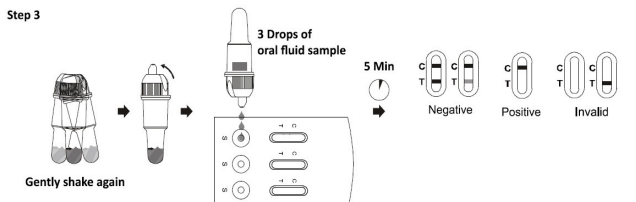
Sample Collection

- Remove the collector from the sealed pouch and collect oral fluid specimen as follows:
- Important:** Place the tongue against the upper and lower jaws and roots to enrich the oral fluid before collection. Insert the sponge end into the mouth, actively swab around the gums on both sides of the mouth and under the tongue and chew the sponge tenderly, place the sponge end under the tongue for a total of 2-3 minutes until the sponge becomes fully saturated.
- Gently pressing the sponge between the tongue and teeth will assist saturation. No hard spots should be felt on the sponge when saturated.
- (Step 2)** Take the collection chamber out of the sealed pouch and unscrew the top.
- Remove the saturated collector from the mouth and place it into the collection chamber. Press the sponge fully against the strainer to release the sample filling the chamber up to the arrow mark. Screw the top back on tightly and discard the collector.
- Gently shake the collection chamber for 10 seconds and leave it to rest for 10 minutes.



Carrying out the Test

- Take the test cassette out from sealed pouch, place it on a clean and level surface.
- (Step 3)** Again gently shake the collection chamber for 10 seconds and then push open the clear tip, invert it and then transfer 3 drops of oral fluid sample (approximately 120 µL) into each specimen well of the test cassette by gently squeezing the base of the tube (the end with the arrow).
- Start the timer and wait for the coloured lines to appear.
- Read results at 5 minutes. Results read after 15 minutes may be inaccurate.



Results

You can read negative results as soon as the test lines form, but for positive results please wait the full 5 minute development time. Please note the drug type code on the test case and read against the code for each drug type. Use the drugs table below to work out which drug the abbreviated code corresponds to. For example, the code "THC" indicates Cannabis. Please note that the drug test you have bought may not test for all the drugs listed in the table below; you need to check the codes on the test to see which of the drugs your test will detect.

Read the results of each individually and independent of one another. The top line in each result (line nearest the top of the test window) next to the "C" is the control line and the lower line next to the "T" is the test line. The control line means the test has worked correctly. If there is no control line then the test is invalid as shown below. This means that either insufficient specimen was added to the well or the instructions have not been followed correctly.



NEGATIVE:* If a second pink/red coloured line appears next to the "T", then this is a negative result for that specific drug.

***NOTE: The colour intensity of the test band (T) is irrelevant; ANY second line (even a faint one) indicates a negative result**

POSITIVE: If no lower second line appears next to any of the drugs then the individual has tested positive for that drug of abuse. The labels next to each line on the test will tell you which drug is being tested for.

INVALID: No line appears in the Control region (C). Read the instructions and repeat the test with a new test card.

What should I do with the results?

If you obtain a negative result this indicates that the drug concentration in the oral fluid specimen is below the designated cut off level for that specific drug. We would suggest that you re-test again in a few weeks' time. If you obtain a positive result then a drug of abuse has been detected in the saliva. You may want to do another test later, or at a further date to confirm the result.

Storage

This test should be stored below 30°C (85°F), do not freeze. Bring the test kit to room temperature before performing the test.

Drugs Table

Drug Abbreviations	Test Sensitivity	Proper name	Other names	Approximate detectable time it remains in the body after use.
AMP	50ng/ml	AMPHETAMINES	SPEED, AMPH, WHIZZ	10 MIN - 72 HOURS
COC	20ng/ml	COCAINE	COKE, CRACK, CHARLIE	10 MIN - 24 HOURS
THC (PARENT)	50ng/ml	CANNABIS / MARIJUANA	CANNABIS, PUFF, WEED, SPLIFF, HASH	30 MIN - 14 HOURS
MET	50ng/ml	METHAMPHETAMINES	ICE, GLASS, METH	10 MIN - 72 HOURS
MTD	30ng/ml	METHADONE	DOLLY, RED ROCK	UP TO 24 HOURS
OPI/MOP/MOR	40ng/ml	OPIATES	HEROIN, SMACK, GEAR	1 HOUR - SEVERAL DAYS
BZO	10ng/ml	BENZODIAZEPINE	VALIUM, TRANQS, NERVE PILLS	UP TO 2 - 3 DAYS
KET	50ng/ml	KETAMINE	SPECIAL K	UP TO 6 HOURS
K2	25ng/ml	SPICE/ SYNTHETIC CANNABIS	BLACK MAMBA, SPICE, BLISS, FAKE WEED	UP TO 1 - 2 DAYS
MDMA	50ng/ml	ECSTACY	Es, PILLS, DOVE, XTC	UP TO 14 HOURS
COT	20ng/ml	COTININE	NICOTINE	UP TO 1 - 2 DAYS

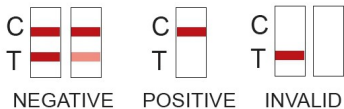
Manufacturer: Hangzhou AllTest Biotech Co., Ltd-550 Yinhai Street, Hangzhou Economic & Technological Development Area, Hangzhou 310018 P.R. China
UK Distributor: Home Health UK Ltd; Website: www.homehealth-uk.com; Email: info@homehealth-uk.com; Telephone: 01923 711511

ver1.0-07.11.2019

Results

You can read negative results as soon as the test lines form, but for positive results please wait the full 5 minute development time. Please note the drug type code on the test case and read against the code for each drug type. Use the drugs table below to work out which drug the abbreviated code corresponds to. For example, the code "THC" indicates Cannabis. Please note that the drug test you have bought may not test for all the drugs listed in the table below; you need to check the codes on the test to see which of the drugs your test will detect.

Read the results of each individually and independent of one another. The top line in each result (line nearest the top of the test window) next to the "C" is the control line and the lower line next to the "T" is the test line. The control line means the test has worked correctly. If there is no control line then the test is invalid as shown below. This means that either insufficient specimen was added to the well or the instructions have not been followed correctly.



NEGATIVE:* If a second pink/red coloured line, no matter how faint appears next to each specific drug (e.g. COC), this is a negative result.

***NOTE: The colour intensity of the test band (T) is irrelevant; ANY second line (even a faint one) indicates a negative result**

POSITIVE: If no lower second line appears next to any of the drugs then the individual has tested positive for that drug of abuse. The labels next to each line on the test will tell you which drug each individual strip is testing for.

INVALID: No line appears in the Control region (C). Read the instructions and repeat the test with a new test card.

What should I do with the results?

If you obtain a negative result this indicates that the drug concentration in the oral fluid specimen is below the designated cut off level for that specific drug. We would suggest that you re-test again in a few weeks' time. If you obtain a positive result then a drug of abuse has been detected in the saliva. You may want to do another test later, or at a further date to confirm the result.

Storage

This test should be stored below 30°C (85°F), do not freeze. Bring the test kit to room temperature before performing the test.

Drugs Table

Drug Abbreviations	Test Sensitivity	Proper name	Other names	Approximate detectable time it remains in the body after use.
AMP	50ng/ml	AMPHETAMINES	SPEED, AMPH, WHIZZ	10 MIN - 72 HOURS
COC	20ng/ml	COCAINE	COKE, CRACK, CHARLIE	10 MIN - 24 HOURS
THC (PARENT)	50ng/ml	CANNABIS / MARIJUANA	CANNABIS, PUFF, WEED, SPLIFF, HASH	30 MIN - 14 HOURS
MET	50ng/ml	METHAMPHETAMINES	ICE, GLASS, METH	10 MIN - 72 HOURS
MTD	30ng/ml	METHADONE	DOLLY, RED ROCK	UP TO 24 HOURS
OPI/MOP/MOR	40ng/ml	OPIATES	HEROIN, SMACK, GEAR	1 HOUR - SEVERAL DAYS
BZO	10ng/ml	BENZODIAZEPINE	VALIUM, TRANQS, NERVE PILLS	UP TO 2 - 3 DAYS
KET	50ng/ml	KETAMINE	SPECIAL K	UP TO 6 HOURS
K2	25ng/ml	SPICE/ SYNTHETIC CANNABIS	BLACK MAMBA, SPICE, BLISS, FAKE WEED	UP TO 1 - 2 DAYS
MDMA	50ng/ml	ECSTACY	Es, PILLS, DOVE, XTC	UP TO 14 HOURS
COT	20ng/ml	COTININE	NICOTINE	UP TO 1 - 2 DAYS