

- > **Port size: 1/4" ... 1/2" (ISO G/PTF)**
- > **Excelon design allows in-line installation or modular installation with other Excelon products**
- > **T73B 2/2 valves no exhaust**
- > **T73T 3/2 valves with M5 tapped exhaust**
- > **T73E 3/2 position lockout valves help conform to OSHA Lockout regulations in USA market. Exhaust outlet is not tapped.**



### Technical features

**Medium:**

Compressed air only

**Maximum operating pressure:**

17 bar (250 psi)

**Port size:**

G1/4, G3/8, G1/2,  
1/4 PTF, 3/8 PTF 1/2 PTF

**Exhaust port:**

M5 for T73T models

**CV factor:**

From IN to OUT ports:  
1/4": 4,0; 3/8": 8,0; 1/2": 7,8;  
0,2 from OUT to Exhaust ports on  
3/2 valves

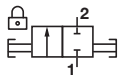
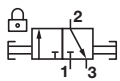
**Ambient/Media temperature:**

-34° ... +65°C (-30° ... +149°F)  
Air supply must be dry enough  
to avoid ice formation at  
temperatures below +2°C (+35°F).

**Materials:**

Body: Zinc  
Slide: Acetal plastic  
Elastomers: NBR

### Technical data - standard models

Symbol	Port size	Function	Size	Weight (kg)	Model
	G1/4	2/2	—	0,30	T73B-2GA-P1N
	G3/8	2/2	Basic	0,30	T73B-3GA-P1N
	G1/2	2/2	—	0,30	T73B-4GA-P1N
	G1/4	3/2	—	0,30	T73T-2GA-P1N
	G3/8	3/2	Basic	0,30	T73T-3GA-P1N
	G1/2	3/2	—	0,30	T73T-4GA-P1N

### Option selector

**T73★-★★A-P1N**

Function	Substitute
2/2 (Black slide locks in closed position only) No exhaust outlet	<b>B</b>
3/2 (Yellow slide locks in closed position only) Unthreaded exhaust outlet	<b>E</b>
3/2 (Red slide locks in closed position only) Threaded exhaust port	<b>T</b>

Thread form	Substitute
NPT	<b>A</b>
ISO G parallel (standard)	<b>G</b>
Thread size	Substitute
1/4"	<b>2</b>
3/8"	<b>3</b>
1/2"	<b>4</b>

**Accessories**

Quikclamp®	Quikclamp with wall bracket®	Quikmount pipe adaptor *1)	Porting block with three alternative 1/4" ports	Silencer
4314-51	4314-52	G1/4: 4315-09 G3/8: 4315-10 G1/2: 4315-11 1/4 PTF: 4315-01 3/8 PTF: 4315-02 1/2 PTF: 4315-03	G1/4: 4316-52 1/4 PTF: 4316-50	M5: T40M0500

\*1) Please use a Quikmount pipe adaptor if the Quikclamp be mounted at inlet or outlet side.

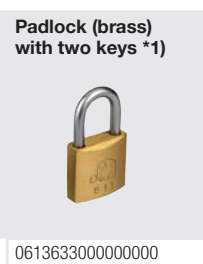
**Pressure switch**



**Padlock**

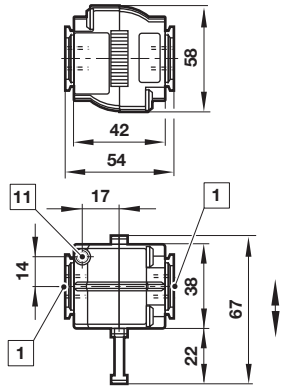


**Padlock (brass) with two keys \*1)**



\*1) for shut-off valves

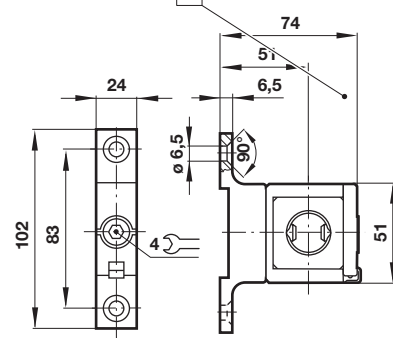
**Drawing**



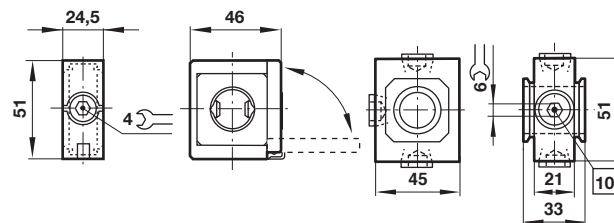
- 1 Main ports 1/4", 3/8" or 1/2" ISO G/PTF
- 11 Exhaust port M5 at 3/2 valve only

**Accessories**

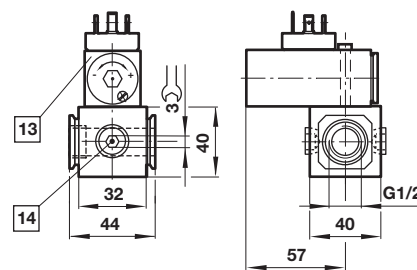
**Quikclamp® with wall bracket**



**Quikclamp®**

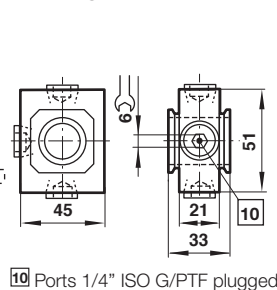


**Porting block for pressure switch**



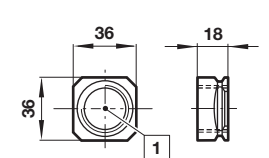
- 13 Pressure switch is not in scope of delivery
- 14 Alternative G1/4 ports plugged

**Porting block**



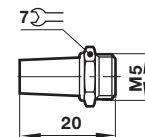
- 10 Ports 1/4" ISO G/PTF plugged

**Pipe adapter**



- 1 Main ports 3/8", 1/2" or 3/4" ISO G/PTF

**Silencer**



Dimensions in mm  
 Projection/First angle



**Warning**

These products are intended for use in industrial compressed air systems only. Do not use these products where pressures and temperatures can exceed those listed under »Technical features/data«.

Before using these products with fluids other than those specified, for non-industrial applications, life-support systems or other applications not within published specifications, consult IMI Precision Engineering, Norgren Inc. Through misuse, age, or malfunction, components used in fluid power systems can fail in various modes.

The system designer is warned to consider the failure modes of all component parts used in fluid power systems and to provide adequate safeguards to prevent personal injury or damage to equipment in the event of such failure.

System designers must provide a warning to end users in the system instructional manual if protection against a failure mode cannot be adequately provided.

System designers and end users are cautioned to review specific warnings found in instruction sheets packed and shipped with these products.