

- > Port size: 1/4" or 3/8" (ISO G/PTF)
- > Excelon design allows in-line installation or modular installation with other Excelon products
- > T72B 2/2 shut-off valves no exhaust
- > T72T 3/2 shut-off valves with M5 tapped exhaust
- > T72E 3/2 USA OSHA lockout valves
- > Valves can be locked in closed position only
- > Threaded ports on inlet and outlet



Technical features

Medium:

Compressed air only

Maximum operating pressure:

17 bar (250 psi)

Port size:

G1/4, G3/8, 1/4 PTF, 3/8 PTF

Exhaust port:

M5 (T72T only)

CV factor:

4,0 from IN to OUT ports:

0,2 from OUT to Exhaust ports on 3/2 valves

Ambient/Media temperature:

-34° ... +65°C (-30° ... +149°F)

Air supply must be dry enough

to avoid ice formation at

temperatures below +2°C (+35°F).

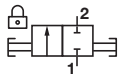
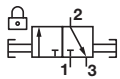
Materials:

Body: zinc

Slide: Acetal

Elastomers: NBR

Technical data - standard models

Symbol	Port size	Function	Size	Weight (kg)	Model
	G1/4	2/2	Basic	0,36	T72B-2GA-P1N
	G3/8	2/2	—	0,36	T72B-3GA-P1N
	G1/4	3/2	Basic	0,39	T72T-2GA-P1N
	G3/8	3/2	—	0,39	T72T-3GA-P1N

Option selector

Version	Substitute	Thread form	Substitute
2/2; black actuator	B	PTF	A
3/2; yellow actuator (OSHA)	E	ISO G parallel	G
3/2; red actuator	T		
Port size	Substitute		
1/4"	2		
3/8"	3		

T72★-★★A-P1N

Accessories

Quikclamp®	Quikclamp with wall bracket®	Quikmount pipe adaptor *1)	Porting block with three alternative 1/4" ports	Silencer
4214-51	4214-52	G1/4: 4215-08 G3/8: 4215-09 1/4 PTF: 4215-02 3/8 PTF: 4215-03	G1/4: 4216-52 1/4 PTF: 4216-50	M5: T40M0500

*1) Please use a Quikmount pipe adaptor if the Quikclamp be mounted at inlet or outlet side.

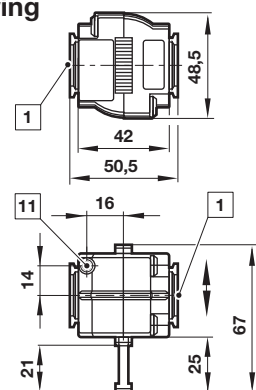
Pressure switch

Porting block for pressure switch	Pressure switch (0,5 ... 8 bar)	Padlock (brass) with two keys *1)
0523109000000000	0881300000000000	0613633000000000

*1) for shut-off valves

Padlock

Drawing



Dimensions in mm
 Projection/First angle

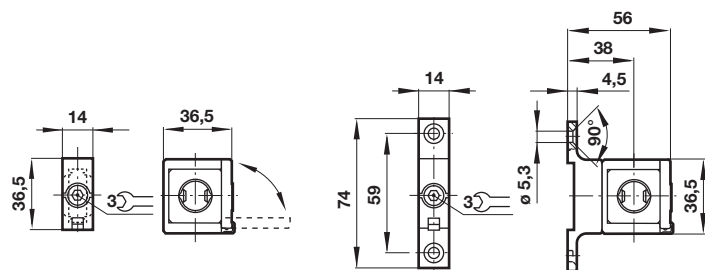


- 1 Main ports 1/4" or 3/8" ISO G/PTF
- 11 Exhaust port M5 at T72T only

Accessories

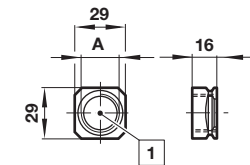
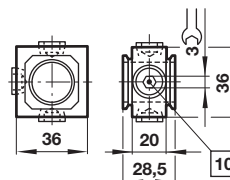
Quikclamp®

Quikclamp® with wall bracket



Porting block

Pipe adapter

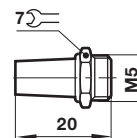
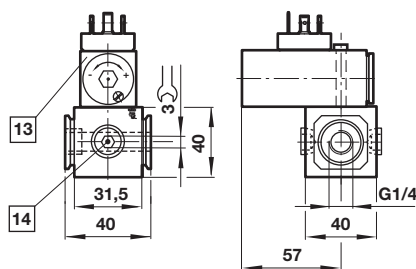


- 1 Main ports 1/4" or 3/8" ISO G/PTF

10 Ports (G1/4 or 1/4 NPT) plugged

Porting block for pressure switch

Silencer



- 13 Pressure switch is not in scope of delivery
- 14 Alternative G1/4 ports plugged

Warning

These products are intended for use in industrial compressed air systems only. Do not use these products where pressures and temperatures can exceed those listed under »Technical features/data«.

Before using these products with fluids other than those specified, for non-industrial applications, life-support systems or other applications not within published specifications, consult IMI Precision Engineering, Norgren Inc. Through misuse, age, or malfunction, components used in fluid power systems can fail in various modes.

The system designer is warned to consider the failure modes of all component parts used in fluid power systems and to provide adequate safeguards to prevent personal injury or damage to equipment in the event of such failure.

System designers must provide a warning to end users in the system instructional manual if protection against a failure mode cannot be adequately provided.

System designers and end users are cautioned to review specific warnings found in instruction sheets packed and shipped with these products.