

- > Port size: G1/4 and NAMUR interface
- > For single and double operated actuators
- > Standard manual override with detent
- > Simple design of soft spool seal system
- > Compact design, high flow rate
- > Easily interchangeable solenoid system
- > Maintenance-free
- > Valves and solenoids are ATEX approved (see table)



### Technical features

**Medium:**

Compressed air, filtered, lubricated or non-lubricated

**Operation:**

Solenoid, indirectly controlled

**Operating pressure:**

2 ... 8 bar (29 ... 116 psi)

**Orifize:**

6 mm

**Port size:**

G 1/4

NAMUR Interface with integrated exhaust air

**Mounting position:**

Optional, preferably with solenoid on top

**Flow direction:**

Fixed

**Electrical connection:**

See solenoid table

**Ambient/Media temperature:**

-10° ... +50°C (+14° ... +122°F)

Solenoid: see solenoid table

Air supply must be dry enough to avoid ice formation at temperatures below 2°C (+35°F).

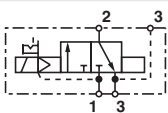
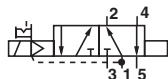
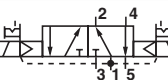
**Materials:**

Housing: Aluminium

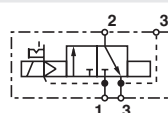
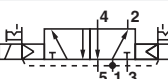
Pilot flange: Plastic

Seat seal: NBR

### Technical data





| Symbol  | Ports<br>1, 3 (5) | 2 (4)  | Actuation                      | Nominal size | Operating pressure (bar) | kv-value<br>(Cv (US) ≈ kv x 1,2) | Weight (kg) | Dimension No. | Model *1) |
|---|-------------------|--------|--------------------------------|--------------|--------------------------|----------------------------------|-------------|---------------|-----------|
|  | G 1/4             | Flange | Solenoid indirectly controlled | 6            | 2 ... 8                  | 1,2                              | 0,4         | 1             | 8010777   |
|  | G 1/4             | Flange | Solenoid indirectly controlled | 6            | 2 ... 8                  | 1,2                              | 0,55        | 2             | 2623077   |
|  | G 1/4             | Flange | Solenoid indirectly controlled | 6            | 2 ... 8                  | 1,2                              | 0,9         | 3             | 2623177   |

### 3/2 or 5/2 way function (conversion instruction see page 6)

| Symbol  | Ports<br>1, 3 (5) | 2 (4)  | Actuation                      | Nominal size | Operating pressure (bar) | kv-value<br>(Cv (US) ≈ kv x 1,2) | Weight (kg) | Dimension No. | Model *1) |
|---|-------------------|--------|--------------------------------|--------------|--------------------------|----------------------------------|-------------|---------------|-----------|
|  | G 1/4             | Flange | Solenoid indirectly controlled | 6            | 2 ... 8                  | 1,2                              | 0,4         | 4             | 2623079   |
|  | G 1/4             | Flange | Solenoid indirectly controlled | 6            | 2 ... 8                  | 1,2                              | 0,9         | 5             | 2623179   |

\*1) When ordering please indicate solenoid, voltage and current type (frequency).

### Solenoid actuators

|   | Power consumption |                    | Rated current      |                     | Protection class<br>IP/NEMA | Ex-Protection<br>(ATEX-Category)                      | Temperature<br>Ambient/<br>Media<br>(°C) | Electrical<br>connection   | Weight<br>(kg) | Drawing<br>No. | Circuit<br>diagram<br>No. | Model |
|---|-------------------|--------------------|--------------------|---------------------|-----------------------------|---|--|--|----------------|----------------|---------------------------|-------|
|   | 24 V d.c.<br>(W)  | 230 V a.c.<br>(VA) | 24 V d.c.<br>(m A) | 230 V a.c.<br>(m A) |                             |   |  |  |                |                |                           |       |
|  | 1,8               | —                  | 70                 | —                   | IP65 (with connector)       | —   | -15 ... +50                              | Connector<br>DIN EN<br>175301-803,<br>form B *1)                                 | 0,1            | 11             | 1                         | 3050  |
|   | 1,6               | —                  | 30                 | —                   | IP65 (with connector)       | —   | -15 ... +50                              | Connector<br>DIN EN<br>175301-803,<br>form A *1)                                 | 0,1            | 12             | 1                         | 3036  |
|   | 2,7               | —                  | 115                | —                   | IP65 (with connector)       | II 2 G Ex mb IIC T5 Gb<br>II 2 D Ex mb tb T95°C<br>Db | -20 ... +50 *2)                          | Cable length<br>3 m  | 0,3            | 13             | 14                        | 3062  |
|   | —                 | 2,1                | —                  | 9                   | IP65 (with connector)       | II 2 G Ex mb IIC T5 Gb<br>II 2 D Ex mb tb T95°C<br>Db | -20 ... +50 *2)                          | Cable length<br>3 m  | 0,3            | 13             | 15                        | 3063  |
|  | 2,7               | —                  | 115                | —                   | IP66 (with connector)       | —   | -10 ... +50                              | Connector *1)<br>M12x1,<br>DIN IEC<br>61076-2-101<br>Solenoid with<br>yellow LED | 0,1            | 14             | 17                        | 3071  |







Standard voltages (±10%) 24 V d.c., 230 V a.c., other voltages on request.

\*1) Connector is not scope of delivery, see table »Accessories«

### Approvals

| Model | Approvals<br>ATEX            | IECEX | FM | Datasheet    |
|-------|------------------------------|-------|----|--------------|
| 306x  | PTB 03 ATEX 2015             | —     | —  | N/en 7.1.560 |
| 307x  | EC-Declaration of Conformity | —     | —  | N/en 7.1.565 |

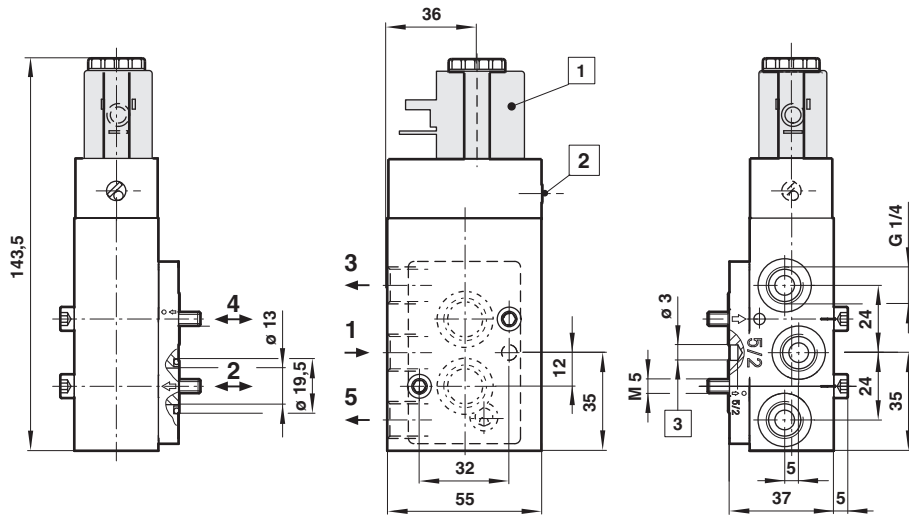
### Accessories

| Connector<br>Form A   | M12 x 1   |   | Silencer  | Flange plate   | Yoke  |
|---|---|---|---|--|---|
|  |  |  |  |  |  |
|   |   |   | Page 7  | Page 7   | Page 7  |
| 0570275 (form A)  | 0523055 (without cable)   | 0523056 (90°, without cable)  | M/S2 G1/4   | 0612790 (NAMUR single connection plate)  | 0540593   |
| 0680003 (form B)  | 0523057 (2 m cable)   | 0523058 (90°, 2 m cable length)   |   | 0612791 (NAMUR-rip use in combination with 0612790, Alu)                             |   |
|   | 0523052 (5 m cable)   | 0523053 (90°, 5 m cable length)   |   |  |   |

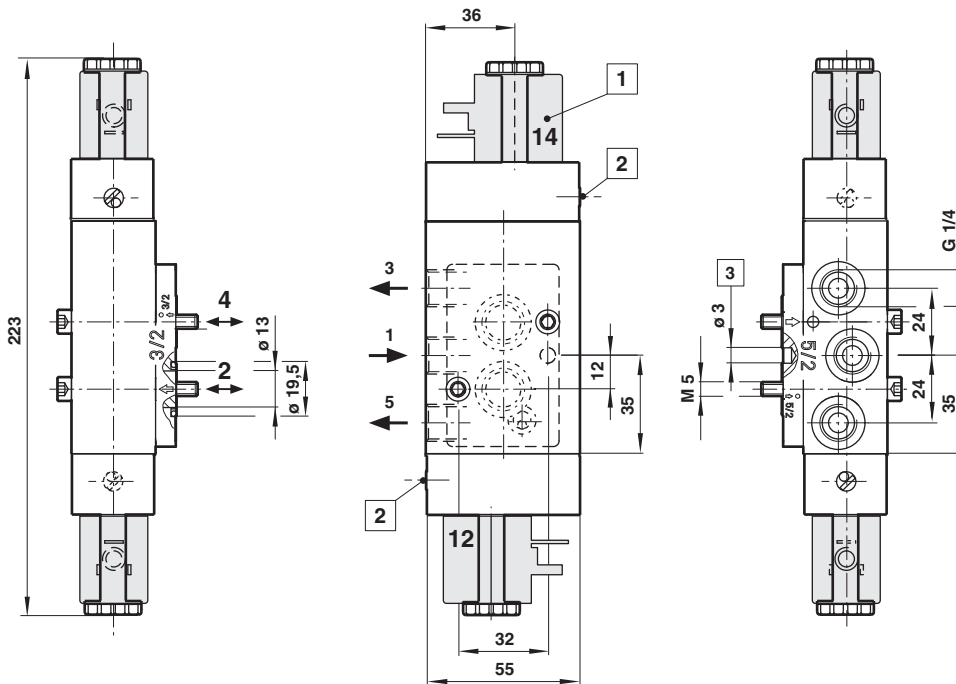


4

Dimensions in mm  
 Projection/First angle



5



- 1 Solenoid 90° turnable
- 2 Manual override with detent
- 3 NAMUR centering hole

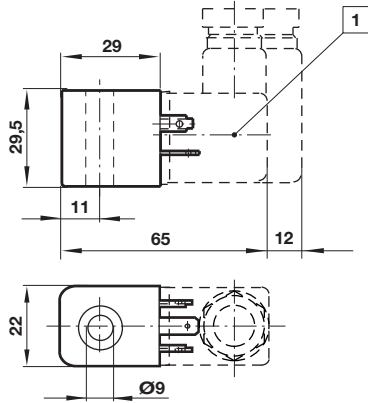
**Dimensions**

**Solenoid operators**

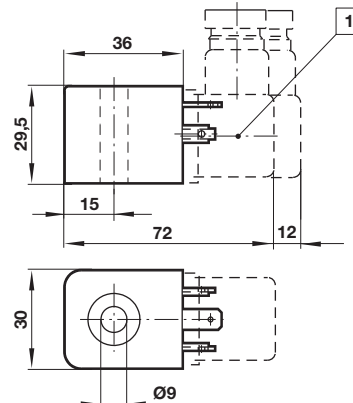
Dimensions in mm  
Projection/First angle



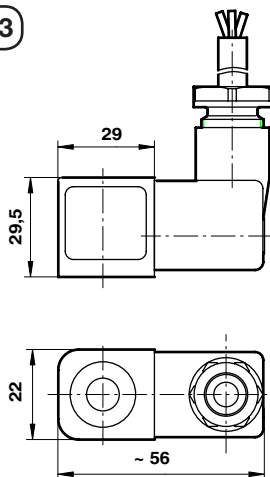
11



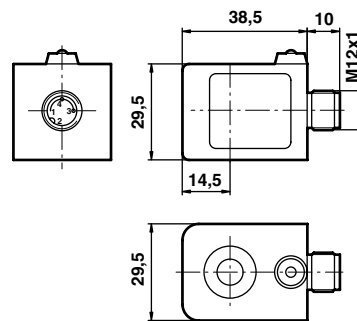
12



13



14



1 Connector 4 x 90° turnable

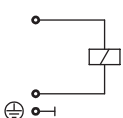
**Electrical connection M 12 x 1**



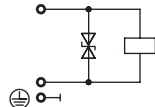
| Pin | Signal                            | Cable |
|-----|-----------------------------------|-------|
| 1   | + UB                              | brown |
| 2   | Out 2 (PNP) / analogue 4 to 20 mA | white |
| 3   | 0 Volt                            | blue  |
| 4   | Out 1 (PNP)                       | black |

**Circuit diagrams**

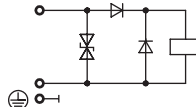
1



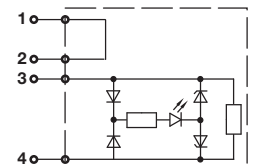
14



15

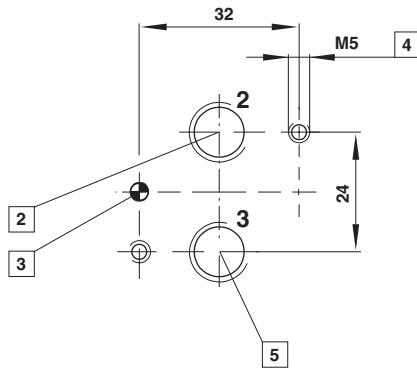


17



**NAMUR hole pattern (driving side)**

Dimensions in mm  
Projection/First angle



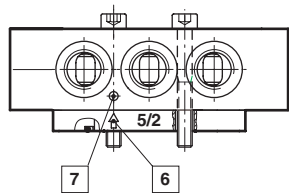
- 2 Port 2 (A)
- 3 Coding stud threaded
- 4 M5 (10 deep)
- 5 Port 3 (R)

NAMUR quick exhaust module for a better kv-value by exhaust see data sheet 5.4.820

NAMUR interlinking plates in redundancy design for »safety exhausting« and »safety ventilating« see data sheet 5.4.830

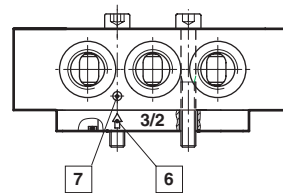
**Conversion instructions of 5/2 into 3/2 way function**

**5/2 way function (original mode of supply)**

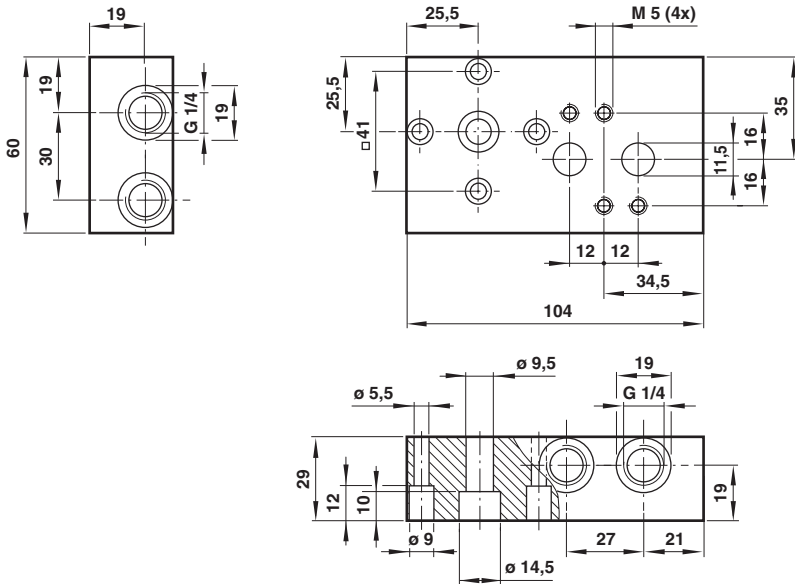


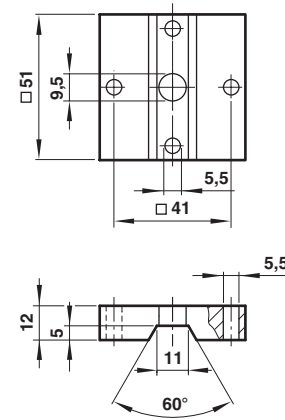
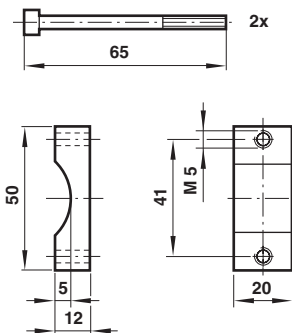
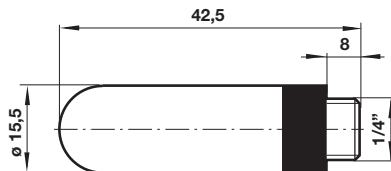
3/2 resp. 5/2 way function can be achieved just by swapping enclosed adaptor plates. Make sure Marker and Arrow do match as shown on above drawing. Original mode of supply: 5/2 function.

**3/2 way function**



- 6 Arrow
- 7 Marker

**Single connection plate  
Model: 0612790**

**NAMUR slot  
Model: 0612791**

 Dimensions in mm  
Projection/First angle

**Yoke  
Model: 0540593**

**Silencer  
Model: M/S2**

**Warning**

These products are intended for use in industrial compressed air systems only. Do not use these products where pressures and temperatures can exceed those listed under

»**Technical features/data**«.

Before using these products with fluids other than those specified, for non-industrial applications, life-support systems or other applications not within published specifications, consult IMI NORGREN.

Through misuse, age, or malfunction, components used in fluid power systems can fail in various modes.

The system designer is warned to consider the failure modes of all component parts used in fluid power systems and to provide adequate safeguards to prevent personal injury or damage to equipment in the event of such failure.

System designers must provide a warning to end users in the system instructional manual if protection against a failure mode cannot be adequately provided.

System designers and end users are cautioned to review specific warnings found in instruction sheets packed and shipped with these products.