

# Wafer Style Twin Disc Ductile Iron Check Valve

Fire Protection Valve • Wafer Connection • Double-Door • EPDM Rubber Seat • Spring Actuated • Epoxy Coated

**300 PSI/20.6 Bar Non-Shock Cold Working Pressure**

UL/ULC LISTED • FM APPROVED  
ANSI/NSF 372



**KW-990-E-LF**  
2" - 16"

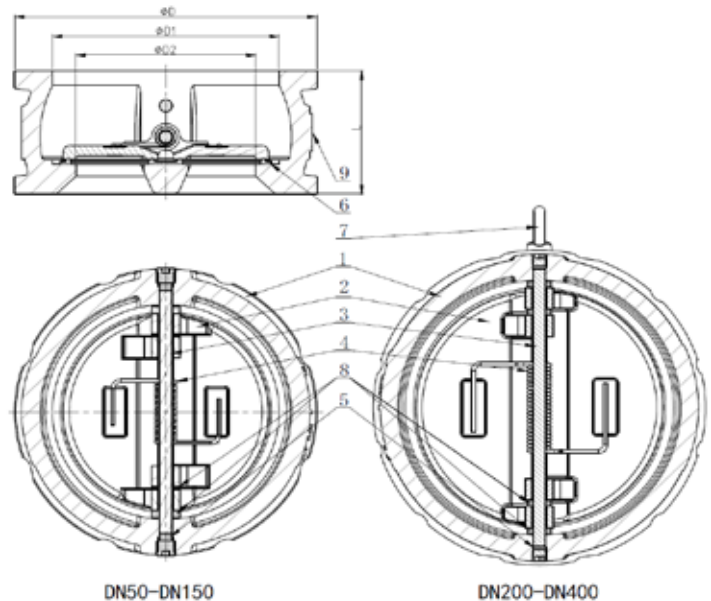


## MATERIAL LIST

PART	SPECIFICATION
1. Valve Body	Ductile Iron ASTM A536 65-45-12
2. Disc (2)	ASTM 316 Stainless Steel
3. Stem (2)	ASTM 420 Stainless Steel
4. Spring	ASTM 304 Stainless Steel
5. Stem Seal (4)	EPDM
6. Rubber Seat	EPDM
7. Eyebolt	Carbon Steel Zinc Plated
8. Washer (4)	PTFE
9. Nameplate	Aluminum

## DIMENSIONS — WEIGHTS

VALVE SIZE	L	Dφ	D1φ	D2φ	WEIGHT
inch mm	inch mm	inch mm	inch mm	inch mm	lbs kg
2" 50	2.13 54	4.17 106	2.68 68	1.81 46	3.8 1.7
2½" 65	2.36 60	5.00 127	3.07 78	2.36 60	5.5 2.5
3" 80	2.24 57	5.28 134	4.02 102	2.76 70	6.3 2.9
4" 100	2.64 67	6.38 162	4.61 117	3.30 84	10.8 4.9
5" 125	3.27 83	7.64 194	5.71 145	4.53 115	16.2 7.3
6" 150	3.74 95	8.58 218	6.69 170	5.28 134	23.4 10.6
8" 200	5.00 127	10.9 276.8	8.9 226	7.24 184	41.5 18.8
10" 250	5.51 140	13.21 335.5	10.43 265	8.66 220	69.6 31.6
12" 300	7.13 181	15.96 405.5	12.2 310	10.24 260	112.5 51.0
14" 350	7.24 184	17.61 447.4	14.17 360	11.90 302	151.6 68.8
16" 400	7.52 191	19.88 505	16.14 410	13.78 350	202.1 91.7



### Approvals and Certifications

- UL 312/ULC/ORD-C312 Listed
- NSF/ANSI 372
- UL/ULC Listed
- FM 1210 Approved

### WARNING

1. These are not to be used as steam valves
2. Valves are not to be used near a reciprocating air compressor
3. Install 5 pipe diameters minimum downstream from pump discharge or elbows to avoid flow turbulence. Flow straighteners may be required in extreme cases. NOTE: On pump discharge, the preferred check valves are in-line spring loaded disc hinge pin in the vertical position to insure proper operation.

### NOTES

1. Double door wafer style spring loaded check valve
2. Maximum operating pressure 300 PSI (20.6 bar)
3. Operating Temperature 32°F to 180°F (0°C to 82°C)
4. Design for use between flanges ASME B16.1 Class 125 or EN1092 PN16
5. Coating Fusion bonded epoxy in accordance with AWWA C550
6. Sizes DN200 - DN400 include an eyebolt for lifting
7. Applications: Fire protection, potable water, water distribution, etc.
8. Approved for vertical or horizontal installation

### Caution

- For horizontal flow applications, the valve must be installed with disc hinge pin in the vertical position to insure proper operation