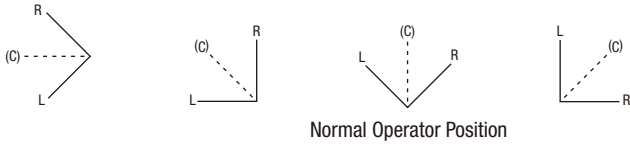


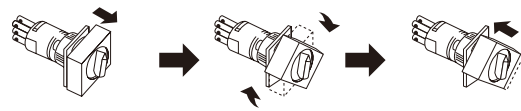
Selector Switches

Operator position can be changed by IDEC's original bezel rotating and locking system. The bezel can be locked at every 45° and bezel rotation is prevented while mounting on a panel.

Example: 3-position






How to change the operator position



Pull out the bezel to release the lock. Rotate the bezel, and push it in at 45° intervals to lock the bezel.

Package Quantity: 1

Package Quantity: 1

Shape	Position	Contact	Part No.	
			IP40	IP65
 Round AS6M-□Y	90° 2-position	Maintained	SPDT AS6M-2Y1C	AS6M-2Y1PC
		Spring return from right to left	DPDT AS6M-2Y2C	AS6M-2Y2PC
	45° 3-position	Maintained	DPDT AS6M-3Y2C	AS6M-3Y2PC
		Spring return from right to center	DPDT AS6M-3Y2C	AS6M-3Y2PC
		Spring return from left to center	DPDT AS6M-3Y2C	AS6M-3Y2PC
	 Square AS6Q-□Y	90° 2-position	Maintained	SPDT AS6Q-2Y1C
Spring return from right to left			DPDT AS6Q-2Y2C	AS6Q-2Y2PC
45° 3-position		Maintained	DPDT AS6Q-3Y2C	AS6Q-3Y2PC
		Spring return from right to center	DPDT AS6Q-3Y2C	AS6Q-3Y2PC
		Spring return from left to center	DPDT AS6Q-3Y2C	AS6Q-3Y2PC
 Rectangular AS6H-□Y		90° 2-position	Maintained	SPDT AS6H-2Y1C
	Spring return from right to left		DPDT AS6H-2Y2C	AS6H-2Y2PC
	45° 3-position	Maintained	DPDT AS6H-3Y2C	AS6H-3Y2PC
		Spring return from right to center	DPDT AS6H-3Y2C	AS6H-3Y2PC
		Spring return from left to center	DPDT AS6H-3Y2C	AS6H-3Y2PC
	Spring return two-way	DPDT AS6H-3Y2C	AS6H-3Y2PC	

- Bezel: black
- Knob: black

Position	Operation	Contact Operation		
		← Left	↑ Center	→ Right
90° 2-position	Maintained	SPDT		
	Spring return from right	DPDT		
45° 3-position	Maintained	DPDT		
	Spring return from right	DPDT		
	Spring return from left	DPDT		
	Two-way return	DPDT		

APEM

Switches & Pilot Lights

Control Boxes

Emergency Stop Switches

Enabling Switches

Safety Products

Explosion Proof

Terminal Blocks

Relays & Sockets

Circuit Protectors

Power Supplies

LED Illumination

Controllers

Operator Interfaces

Sensors

AUTO-ID

Flush Silhouette

ø16

ø22

ø30

Miniature

Pilot Lights

LB

A6