

SPORT-TEK®

Sport-Tek® PosiCharge® Competitor™ 1/4-Zip Pullover. ST357

This lightweight pullover locks in color and wicks moisture. It's versatile enough for year-round wear.

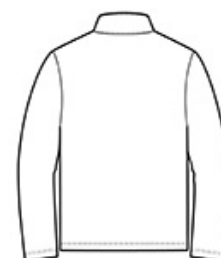
- 3.8-ounce, 100% polyester interlock with PosiCharge technology
- Removable tag for comfort and relabeling
- Cadet collar
- Reverse coil zipper
- Set-in sleeves
- Open cuffs and hem

CARE INSTRUCTIONS

Machine wash cold with like colors. Do not bleach. Do not use fabric softener. Tumble dry low. Remove promptly. Cool iron if needed. Do not dry clean

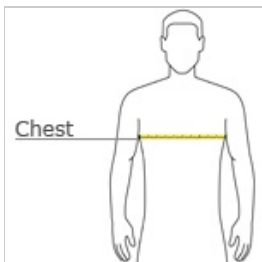


front



back

HOW TO MEASURE



CHEST WIDTH

Measure under the arm and around the fullest part of the chest with arms down, keeping tape horizontal.

SIZE CHART

	XS	S	M	L	XL	2XL	3XL	4XL
Chest	32-34	35-37	38-40	41-43	44-46	47-49	50-53	54-57

COLOR INFORMATION

Please note: PMS code information is shown only when an exact match is available.



Atomic Blue
PMS 2203C



Black
PMS BLACK C



Deep Red
PMS 201C



Grey Concrete
PMS COOL GRAY
10C



Iron Grey
PMS 7540C



Royal
PMS 7686C



True Navy
PMS 533C



True Red
PMS 200C



True Royal
PMS 7687C



White