



Sour Candy Kush D8

Sample ID: G2L0111-14

Matrix: Industrial Hemp

Test ID: 5028416

Source ID:

Date Sampled: 12/07/22

Date Accepted: 12/07/22

Elli-Hou Farms LLC
sales@ellihoufarms.com

Results at a Glance

Total THC : 0.3829 %

Total CBD : 10.44 %

Total CBG : 0.3551 %

delta 8-THC : 16.10 % **PASS**



Eric Wendt
Chief Science Officer - 12/15/2022



Sour Candy Kush D8

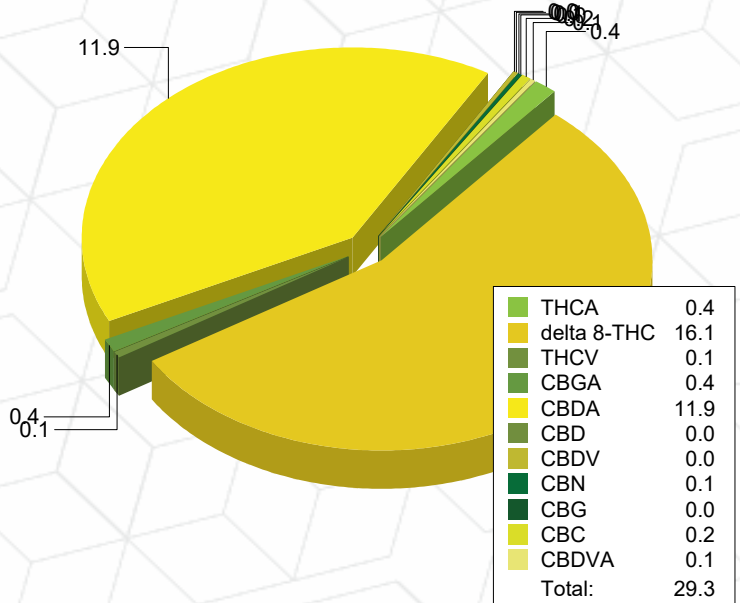
Sample ID: G2L0111-14 Matrix: Industrial Hemp
Test ID: 5028416
Source ID:
Date Sampled: 12/07/22 Date Accepted: 12/07/22

Elli-Hou Farms LLC
sales@ellihoufarms.com

Potency Analysis

Date/Time Extracted: 12/09/22 09:26 Analysis Method/SOP: 215 Batch Identification: 2250042

Cannabinoids	LOQ (%)	% by Wt.	mg/g	Cannabinoids Profile
Total THC	0.009080	0.3829	3.829	
Total CBD	0.008300	10.44	104.4	
Total CBG	7.900E-4	0.3551	3.551	
THCA	5.000E-4	0.4366	4.366	
delta 9-THC	5.000E-4	< LOQ	< LOQ	
delta 8-THC	0.01796	16.10	161	
THCV	0.005055	0.1178	1.178	
THCVA	0.001885	< LOQ	< LOQ	
CBD	0.002000	0.02647	0.2647	
CBDA	0.002000	11.87	118.7	
CBDV	0.005000	0.04234	0.4234	
CBDVA	0.001640	0.07839	0.7839	
CBN	0.002990	0.05265	0.5265	
CBG	7.900E-4	0.01928	0.1928	
CBGA	7.900E-4	0.3824	3.824	
CBC	0.008965	0.1866	1.866	



Total THC = delta 9-THC + (THCA * 0.877)
Total CBD = CBD + (CBDA * 0.877)
Total CBG = CBG + (CBGA * 0.878)
LOQ=Limit of Quantification, the lowest measurable concentration of an analyte.



Eric Wendt
Chief Science Officer - 12/15/2022

These results relate only to the sample included on this report. The report may not be reproduced except in full, without the written permission of Green Leaf Lab.

This is for informational testing and is not compliance testing. Lab results apply to the sample as received.



Quality Control Potency

Batch: 2250042 - 215-Hemp

Blank(2250042-BLK1)							
Analyte	Result	LOQ	Units	%Recovery Limits	Extracted	Analyzed	Notes
THCA	< LOQ	0.0005	%		12/09/22 09:26	12/09/22 17:05	
THCA	< LOQ	5.000E-4	%		12/09/22 09:26	12/09/22 17:05	
delta 9-THC	< LOQ	0.0005	%		12/09/22 09:26	12/09/22 17:05	
delta 9-THC	< LOQ	5.000E-4	%		12/09/22 09:26	12/09/22 17:05	
delta 8-THC	< LOQ	0.004	%		12/09/22 09:26	12/09/22 17:05	
delta 8-THC	< LOQ	0.004490	%		12/09/22 09:26	12/09/22 17:05	
THCV	< LOQ	0.005055	%		12/09/22 09:26	12/09/22 17:05	
THCV	< LOQ	0.005	%		12/09/22 09:26	12/09/22 17:05	
THCVA	< LOQ	0.002	%		12/09/22 09:26	12/09/22 17:05	
THCVA	< LOQ	0.001885	%		12/09/22 09:26	12/09/22 17:05	
CBD	< LOQ	0.0005	%		12/09/22 09:26	12/09/22 17:05	
CBD	< LOQ	5.000E-4	%		12/09/22 09:26	12/09/22 17:05	
CBDA	< LOQ	0.0005	%		12/09/22 09:26	12/09/22 17:05	
CBDA	< LOQ	5.000E-4	%		12/09/22 09:26	12/09/22 17:05	
CBDV	< LOQ	0.005	%		12/09/22 09:26	12/09/22 17:05	
CBDV	< LOQ	0.005000	%		12/09/22 09:26	12/09/22 17:05	
CBDVA	< LOQ	0.002	%		12/09/22 09:26	12/09/22 17:05	
CBDVA	< LOQ	0.001640	%		12/09/22 09:26	12/09/22 17:05	
CBN	< LOQ	0.003	%		12/09/22 09:26	12/09/22 17:05	
CBN	< LOQ	0.002990	%		12/09/22 09:26	12/09/22 17:05	
CBG	< LOQ	0.0008	%		12/09/22 09:26	12/09/22 17:05	
CBG	< LOQ	7.900E-4	%		12/09/22 09:26	12/09/22 17:05	
CBGA	< LOQ	0.0008	%		12/09/22 09:26	12/09/22 17:05	
CBGA	< LOQ	7.900E-4	%		12/09/22 09:26	12/09/22 17:05	
CBC	< LOQ	0.009	%		12/09/22 09:26	12/09/22 17:05	
CBC	< LOQ	0.008965	%		12/09/22 09:26	12/09/22 17:05	

Reference(2250042-SRM1)							
Analyte	% Recovery	LOQ	Units	%Recovery Limits	Extracted	Analyzed	Notes
THCA	101	0.0005	%	90-110	12/09/22 09:26	12/09/22 17:28	
THCA	101	5.000E-4	%	90-110	12/09/22 09:26	12/09/22 17:28	
delta 9-THC	107	0.0005	%	90-110	12/09/22 09:26	12/09/22 17:28	
delta 9-THC	107	5.000E-4	%	90-110	12/09/22 09:26	12/09/22 17:28	
delta 8-THC	99.1	0.004	%	90-110	12/09/22 09:26	12/09/22 17:28	
delta 8-THC	99.1	0.004490	%	90-110	12/09/22 09:26	12/09/22 17:28	
CBD	100	5.000E-4	%	90-110	12/09/22 09:26	12/09/22 17:28	
CBD	100	0.0005	%	90-110	12/09/22 09:26	12/09/22 17:28	
CBDA	96.6	0.0005	%	90-110	12/09/22 09:26	12/09/22 17:28	
CBDA	96.6	5.000E-4	%	90-110	12/09/22 09:26	12/09/22 17:28	



Eric Wendt
Chief Science Officer - 12/15/2022



Quality Control Terpene Analysis

Batch: 2250042 - 215-Hemp

Blank(2250042-BLK2)							
Analyte	Result	LOQ	Units	%Recovery Limits	Extracted	Analyzed	Notes
alpha-Bisabolol	< LOQ	0.00025	%		12/09/22 09:26	12/09/22 18:26	
Camphene	< LOQ	0.00025	%		12/09/22 09:26	12/09/22 18:26	
Camphor	< LOQ	0.00025	%		12/09/22 09:26	12/09/22 18:26	
3-Carene	< LOQ	0.00025	%		12/09/22 09:26	12/09/22 18:26	
beta-Caryophyllene	< LOQ	0.00025	%		12/09/22 09:26	12/09/22 18:26	
Caryophyllene Oxide	< LOQ	0.00025	%		12/09/22 09:26	12/09/22 18:26	
alpha-Cedrene	< LOQ	0.00025	%		12/09/22 09:26	12/09/22 18:26	
Cedrol	< LOQ	0.00025	%		12/09/22 09:26	12/09/22 18:26	
Endo-fenchyl alcohol	< LOQ	0.00025	%		12/09/22 09:26	12/09/22 18:26	
Eucalyptol	< LOQ	0.00025	%		12/09/22 09:26	12/09/22 18:26	
Geraniol	< LOQ	0.00025	%		12/09/22 09:26	12/09/22 18:26	
Geranyl acetate	< LOQ	0.00025	%		12/09/22 09:26	12/09/22 18:26	
Guaiol	< LOQ	0.00025	%		12/09/22 09:26	12/09/22 18:26	
alpha-Humulene	< LOQ	0.00025	%		12/09/22 09:26	12/09/22 18:26	
Isoborneol	< LOQ	0.00025	%		12/09/22 09:26	12/09/22 18:26	
Isopulegol	< LOQ	0.00025	%		12/09/22 09:26	12/09/22 18:26	
Limonene	< LOQ	0.00025	%		12/09/22 09:26	12/09/22 18:26	
Linalool	< LOQ	0.00025	%		12/09/22 09:26	12/09/22 18:26	
beta-Myrcene	< LOQ	0.00025	%		12/09/22 09:26	12/09/22 18:26	
trans-Nerolidol	< LOQ	0.00025	%		12/09/22 09:26	12/09/22 18:26	
alpha-Pinene	< LOQ	0.00025	%		12/09/22 09:26	12/09/22 18:26	
beta-Pinene	< LOQ	0.00025	%		12/09/22 09:26	12/09/22 18:26	
Pulegone	< LOQ	0.00025	%		12/09/22 09:26	12/09/22 18:26	
Sabinene	< LOQ	0.00025	%		12/09/22 09:26	12/09/22 18:26	
Sabinene hydrate	< LOQ	0.00025	%		12/09/22 09:26	12/09/22 18:26	
gamma-Terpinene	< LOQ	0.00025	%		12/09/22 09:26	12/09/22 18:26	
alpha-Terpinene	< LOQ	0.00025	%		12/09/22 09:26	12/09/22 18:26	
Terpinolene	< LOQ	0.00025	%		12/09/22 09:26	12/09/22 18:26	
Valencene	< LOQ	0.00025	%		12/09/22 09:26	12/09/22 18:26	
Verbenone	< LOQ	0.00025	%		12/09/22 09:26	12/09/22 18:26	
trans-beta-Farnesene	< LOQ	0.00025	%		12/09/22 09:26	12/09/22 18:26	
A-Terpineol	< LOQ	0.00025	%		12/09/22 09:26	12/09/22 18:26	
cis-Nerolidol	< LOQ	0.00025	%		12/09/22 09:26	12/09/22 18:26	
Thymol	< LOQ	0.00025	%		12/09/22 09:26	12/09/22 18:26	
Terpinen-4-ol	< LOQ	0.00025	%		12/09/22 09:26	12/09/22 18:26	
Squalene	< LOQ	0.00025	%		12/09/22 09:26	12/09/22 18:26	
Safranal	< LOQ	0.00025	%		12/09/22 09:26	12/09/22 18:26	
Piperitone	< LOQ	0.00025	%		12/09/22 09:26	12/09/22 18:26	



Eric Wendt
Chief Science Officer - 12/15/2022

These results relate only to the sample included on this report. The report may not be reproduced except in full, without the written permission of Green Leaf Lab.

This is for informational testing and is not compliance testing. Lab results apply to the sample as received.



Quality Control Terpene Analysis (Continued)

Batch: 2250042 - 215-Hemp (Continued)

Blank(2250042-BLK2)							
Analyte	Result	LOQ	Units	%Recovery Limits	Extracted	Analyzed	Notes
Phytane	< LOQ	0.00025	%		12/09/22 09:26	12/09/22 18:26	
p-Cymene	< LOQ	0.00025	%		12/09/22 09:26	12/09/22 18:26	
Octyl Acetate	< LOQ	0.00025	%		12/09/22 09:26	12/09/22 18:26	
Nootkatone	< LOQ	0.00025	%		12/09/22 09:26	12/09/22 18:26	
Menthone	< LOQ	0.00025	%		12/09/22 09:26	12/09/22 18:26	
Menthol	< LOQ	0.00025	%		12/09/22 09:26	12/09/22 18:26	
Isobornyl Acetate	< LOQ	0.00025	%		12/09/22 09:26	12/09/22 18:26	
Farnesol 1	< LOQ	0.00025	%		12/09/22 09:26	12/09/22 18:26	
Carvone	< LOQ	0.00025	%		12/09/22 09:26	12/09/22 18:26	
alpha-Thujone	< LOQ	0.00025	%		12/09/22 09:26	12/09/22 18:26	
Alpha-Phellandrene	< LOQ	0.00025	%		12/09/22 09:26	12/09/22 18:26	
(+)-Borneol	< LOQ	0.00025	%		12/09/22 09:26	12/09/22 18:26	
(-)-Borneol	< LOQ	0.00025	%		12/09/22 09:26	12/09/22 18:26	
Carvacrol	< LOQ	0.00025	%		12/09/22 09:26	12/09/22 18:26	
trans-beta-Ocimene	< LOQ	0.00025	%		12/09/22 09:26	12/09/22 18:26	
Cis-beta-Ocimene	< LOQ	0.00025	%		12/09/22 09:26	12/09/22 18:26	
Citral	< LOQ	0.00025	%		12/09/22 09:26	12/09/22 18:26	
Citronellol	< LOQ	0.00025	%		12/09/22 09:26	12/09/22 18:26	
Farnesol 2	< LOQ	0.00025	%		12/09/22 09:26	12/09/22 18:26	
Cis-beta-Farnesene	< LOQ	0.00025	%		12/09/22 09:26	12/09/22 18:26	

Reference(2250042-SRM2)							
Analyte	% Recovery	LOQ	Units	%Recovery Limits	Extracted	Analyzed	Notes
beta-Caryophyllene	89.3	0.00025	%	70-130	12/09/22 09:26	12/09/22 18:44	
alpha-Humulene	82.7	0.00025	%	70-130	12/09/22 09:26	12/09/22 18:44	
Limonene	82.2	0.00025	%	70-130	12/09/22 09:26	12/09/22 18:44	
beta-Myrcene	73.8	0.00025	%	70-130	12/09/22 09:26	12/09/22 18:44	



Eric Wendt
Chief Science Officer - 12/15/2022

These results relate only to the sample included on this report. The report may not be reproduced except in full, without the written permission of Green Leaf Lab.

This is for informational testing and is not compliance testing. Lab results apply to the sample as received.



Notes and Definitions

Regulatory Compliance samples were collected onsite at facility according to ORELAP-SOP-001 and ORELAP-SOP-002 and following Sampling Plan FN117. Quality Control samples were tested as received. Results do not include uncertainty of measurements. Available upon request.

- ATM Non-cannabis matrix related interference or suppression of Internal standard
- BLI Baseline Interference - Cannabinoid peak interference in chromatographic baseline affecting QC recovery .
- BLK Analyte detected in method blank, but not associated samples.
- BSH Blank Spike High - Blank Spike recovery above method limit. no detections in samples.
- BSL Blank Spike Low - Blank Spike recovery below lower method limit, analyte chromatography reviewed manually for all samples.
- CBD Interference due to co-elution
- CV1 CBD matrix interference on GC Pest chromatography
- CV2 CCV was above acceptance criteria, Non-detect samples are considered acceptable.
- INF CCV was below acceptance criteria, sample still exceeds regulatory limit.
- ISH One or more QC falls outside acceptance criteria. Data entered into LIMS for informational purposes only.
- ISL Internal Standard concentration is above acceptance criteria.
- MSH Internal Standard concentration is below acceptance criteria.
- MSI Matrix Spike High - Matrix Spike recovery above method limits.
- MSL Matrix Spike Interference - Matrix spike source sample contains analyte hit above calibration affecting recovery accuracy in Matrix Spike.
- TPP Matrix Spike Low - Matrix Spike recovery below lower method limit, analyte chromatography reviewed manually for all samples.
- U Internal Standard concentration outside control limit due to matrix interference



Eric Wendt
Chief Science Officer - 12/15/2022

These results relate only to the sample included on this report. The report may not be reproduced except in full, without the written permission of Green Leaf Lab.

This is for informational testing and is not compliance testing. Lab results apply to the sample as received.