

# Resiners

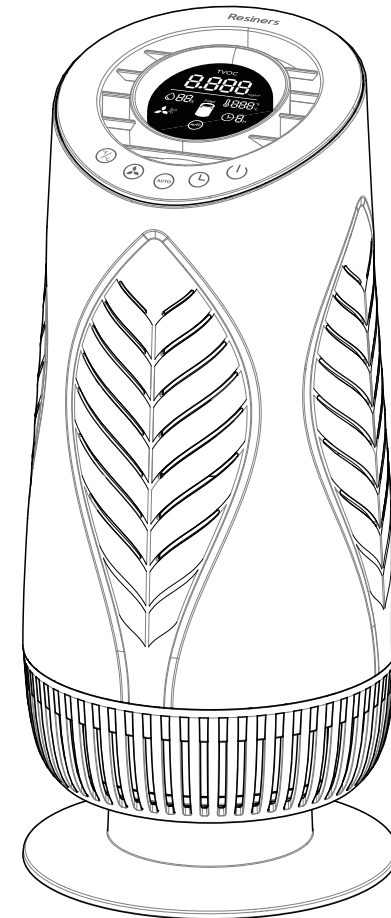
USER MANUAL

Resiners Air Purifier

Model: AP01

# Resiners

Please contact us at [support@resiners.com](mailto:support@resiners.com).



Questions or Concerns?

S-1379  
Please contact us at [support@resiners.com](mailto:support@resiners.com).

**Resiners** stands as the unrivaled pioneer and innovator of resin crafting machines. We are committed to empowering resin beginners, hobbyists, and professionals alike with innovative resin machines to enhance crafting efficiency and perfection. Resiners is Where Art and Tech Meet, fostering a supportive space for passion and creativity to flourish and celebrating the boundless joy of resin craftsmanship.

## Warranty Instructions:

We provide 12 MONTHS WARRANTY for our products. If you have any questions or suggestions about our products, please feel free to contact us through the following contact methods, we look forward to providing you with a high-quality service experience.

7/24 Customer Service: [support@resiners.com](mailto:support@resiners.com)

## Table of Contents

1	Safety Information	3
2	Package Contents	4
3	Getting to Know Your Air Purifier	5
4	Getting Started	6
5	Using Your Air Purifier	8
6	Care & Maintenance	11
7	Specifications	12
8	Warranty Instructions	13

# READ AND SAVE THESE INSTRUCTIONS & SAFETY INFORMATION

To reduce the risk of fire, electric shock, or other accidents, follow all instructions and safety guidelines.

## General Safety

- We kindly suggest using the air purifier as described in the manual.
- **Do not** use it without removing the plastic wrap from the filter. The air purifier will not filter air, and may overheat, causing a fire hazard.
- **Do not** use the air purifier outdoors.
- Keep the air purifier away from water, and wet or damp areas.
- **Never** place it in water or liquid.
- **Do not** use it in excessively humid areas.
- Keep the air purifier away from heat sources.
- **Do not** use it where combustible gases, vapours, metallic dust, aerosol (spray) products, or fumes from industrial oil are present.
- Keep it 1.5m / 5ft away from where oxygen is being administered.
- Children should be supervised to ensure that they do not play with the appliance.
- **Do not** place anything into any opening in the air purifier.
- **Do not** sit on or place heavy objects on the air purifier.
- Keep the inside of the air purifier dry. To prevent moisture buildup, avoid placing it in rooms with major temperature changes or underneath air conditioners.
- **Always** unplug the air purifier before servicing (such as changing the filter).
- **Do not** add essential oils to the filter. The filter will be damaged by the oil and will eventually release an unpleasant smell.
- **Do not** use the air purifier if it is damaged or not working correctly, or if the cord or plug is damaged.
- **Do not** try to repair it yourself.

## WARNING:

- This appliance can be used by children aged from 8 years and above and persons with reduced physical, sensory or mental capabilities or lack of experience and knowledge if they have been given supervision or instruction concerning use of the appliance in a safe way and understand the hazards involved
- Children shall not play with the appliance
- Prior to cleaning or other maintenance, the appliance must be disconnected from the supply mains.
- The appliance is only to be used with the power supply unit provided with the appliance.
- To reduce the risk of fire or electric shock, **do not** use this air purifier with any solid-state speed controls (such as a dimmer switch).
- Children should not clean or perform maintenance on the air purifier without supervision.
- Not for commercial use. Household use **only**.

## Specifications

Power Supply	24V==1.5A
Rated Power	27W
Ideal Room Size	155 ft <sup>2</sup> / 14.4 m <sup>2</sup>  Note: • Effective for larger rooms, but purification will take longer.
Operating Conditions	Temperature: 0°–40°C / 32°–104°F
	Humidity: 0 – 70% RH
Noise Level	27–55dB
Air Purifier Dimensions	φ210×477mm
Air Purifier Weight	2.6 kg
Power Adapter	Input: 100 –240V ~ 50/60Hz
	Output: 24V==1.5A



## Care & Maintenance

### Cleaning the Air Purifier

1. Unplug the unit before cleaning.

Note: Do not use abrasive chemicals or flammable cleaning agents.

2. Wipe the outside of the air purifier with a soft, dry cloth. If necessary, use a damp cloth and then dry it immediately.

3. Vacuum the inside of the air purifier using a vacuum hose with a crevice attachment.

### Check the Filter Life Indicator

When the air purifier filter life falls below 10%, the filter life indicator light on the screen will turn red and blink, indicating that you should replace the filter.

### Reset the Filter Life Indicator

Do as the following suggests to reset the Filter life indicator:

1. Refer to "How to Replace the Filter" for instructions on how to replace the filter.
2. After replacing the filter, press and hold the wind speed button for 2 seconds. You will hear 2 beeps from the buzzer, and the filter life indicator light will blink 3 times, indicating a successful filter reset. The filter life indicator light will then return to a white color.

### Cleaning the Filter

The outer pre-filter should be cleaned every 2-4 weeks to increase efficiency and extend the life of your filter. Clean the pre-filter using a soft brush or vacuum hose to remove hair, dust, and large particles. Do not clean the filter with water or other liquids.

### When Should I Replace the Filter?

In theory, the cumulative usage time of the filter is 2,000 hours. The filter should be replaced every 4-6 months. However, you may need to replace it earlier or later depending on how often you use your air purifier. Using your air purifier in an environment with relatively high pollution may require more frequent filter replacements.

You may need to replace your filter if you notice:

- Increased noise when the air purifier is on
- Decreased airflow
- Unusual odors
- A visibly clogged filter

### Note:

To maintain the performance of your air purifier, only use official Resiners filters.

### How to Replace the Filter

1. Unplug and lift the air purifier. Separate the two halves of the air purifier (see **Getting Started**).
2. Remove the old filters.
3. Clean out any remaining dust or hair inside the air purifier using a vacuum hose.
4. Unwrap the new filter and place it in the bottom half of the air purifier (see **Getting Started**). **Note:** 1) Make sure the side labeled "This side must face upwards" is facing up. 2) Ensure that the power cord inside the air purifier is successfully plugged in.
5. Securely reattach the two halves of the air purifier and plug it in.
6. Reset the Filter Life indicator.

### Storage

If you are not using the air purifier for an extended period, wrap both the air purifier and the filter in plastic packaging and store them in a dry place to avoid moisture damage.

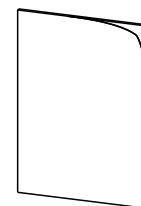
## Power Adapter & Cord

- Keep the air purifier near the outlet it is plugged into.
- **Never** place the cord near any heat source.
- **Do not** cover the cord with a rug, carpet, or other covering.
- **Do not** place the cord under furniture or appliances.
- Keep the cord out of areas where people walk often.
- Place the cord where it will not be tripped over.

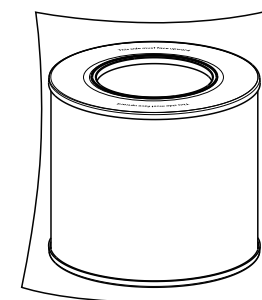
## Electromagnetic Fields (EMF)

The Resiners air purifier complies with all standards regarding electromagnetic fields (EMF). If handled properly and according to the instructions in this user manual, the appliance is safe to use based on scientific evidence available today.

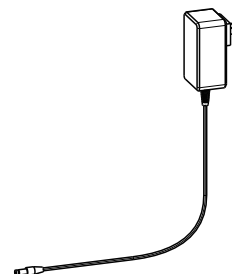
## Package Contents



1 x User Manual



1 x Filter (Pre-Installed)

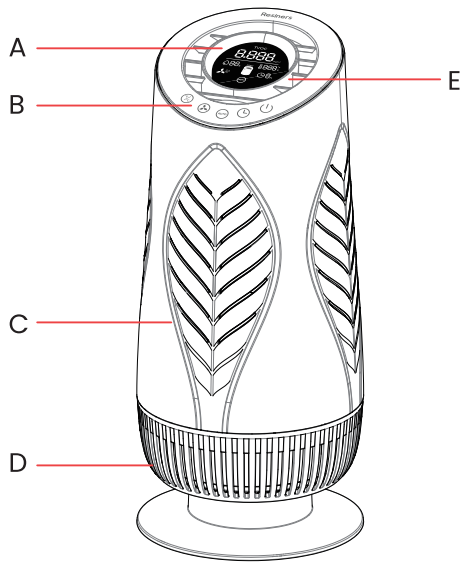


1 x Power Adapter

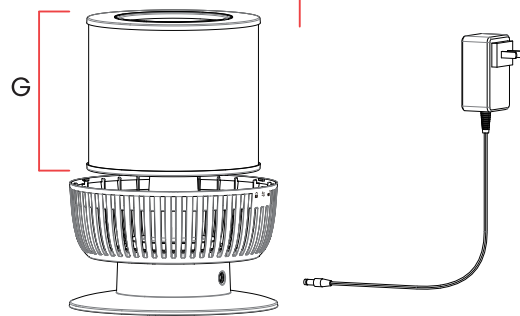
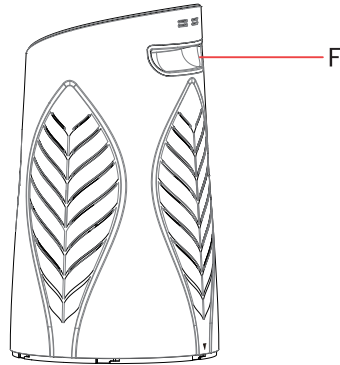


1 x AP01 Air Purifier

# GETTING TO KNOW YOUR AIR PURIFIER



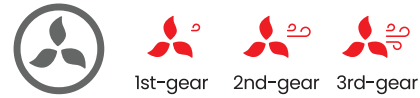
- A. Display Screen
- B. Touch Buttons
- C. Main Housing
- D. Air Inlet
- E. Air Outlet
- F. Handle Position
- G. Filter Cartridge
- H. Charging Power Supply



5

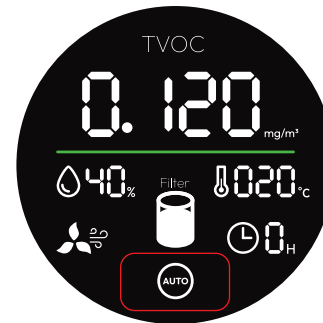
## 5. Switching the wind Speed

In the working state, lightly press the Wind Speed Button, and the fan speed will cycle between 1st-gear, 2nd-gear, and 3rd-gear. The wind speed indicator icons on the screen are as follows:



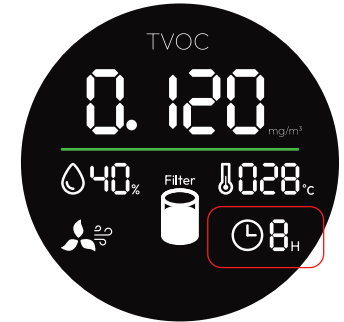
## 6. Auto Mode

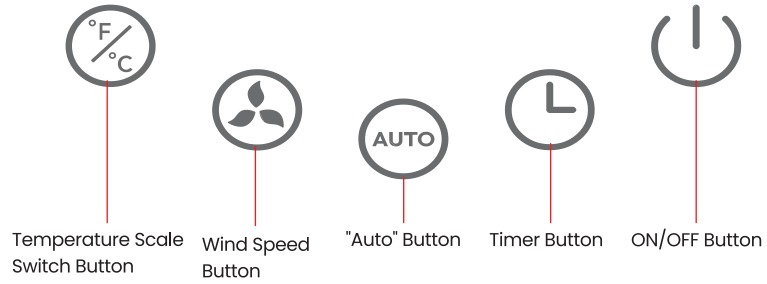
In the working state, lightly press the Auto Button to turn on or off the intelligent purification mode. When the intelligent purification mode is turned on, the auto mode indicator light will turn on. In intelligent purification mode, the machine will automatically control the fan speed according to the air quality.



## 7. Timer Function

In working mode, lightly press the Timer Button to set the shutdown timer. You can choose a time range from 0 to 8 hours in 1-hour increments. The screen will display the currently set timer. Once the set time is reached, the machine will enter standby mode.





3.2 In working state, lightly press the **ON/OFF Button**, the screen will turn off, and the machine will enter standby mode.

3.3 By lightly pressing the **ON/OFF Button** again, the machine will resume operation, returning to the first-gear fan speed, and maintaining the temperature settings from the previous standby state.

#### 4. Switching Temperature Scales

In working mode, lightly touch the **Temperature Scale Switch Button** to cycle through the display of temperature in Celsius and Fahrenheit. The corresponding °C or °F icon will light up.



## About the Filters

This air purifier uses an H13 True HEPA Composite Filtration system to purify the air.

### A. Pre-Filter

Captures large particles such as dust, lint, fibres, hair, and pet fur, Maximises the filter's life by protecting it.

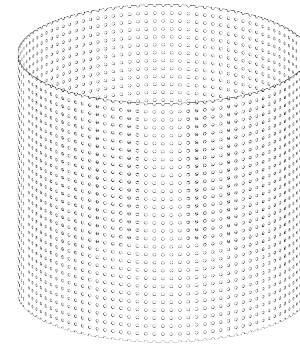
### B. H13 True HEPA Composite Filter

Traps at least 99.97% of airborne particles 0.3 microns in size.

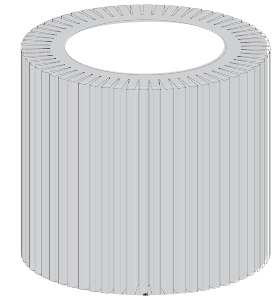
Traps airborne particles such as fine dust, smoke particles, and allergens such as pollen and pet dander.

Absorbs and Removes smoke, odours, fumes, TVOC substances in the air.

**Note:** When installing the filter, please ensure that the side labeled "This side must face upwards" is facing up.



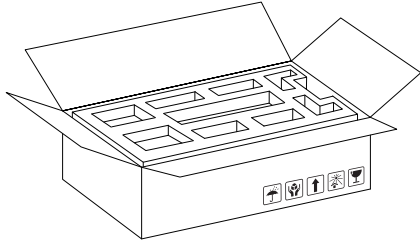
A



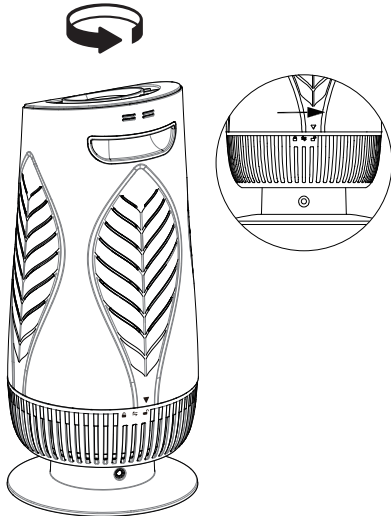
B

## Getting Started

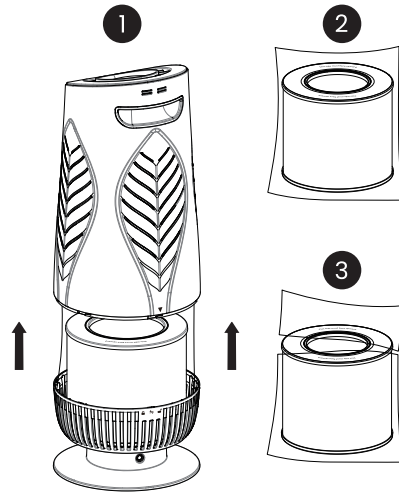
1. Remove all packaging and take out the air purifier from the package box, and then peel off the protective layers.



2. Rotate in the direction of the arrow to the indicated position to unlock.

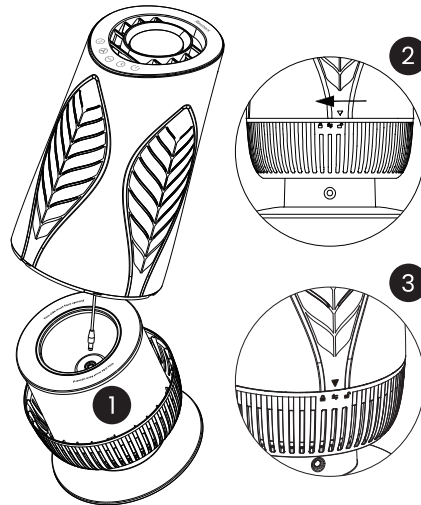


3. Lift the main body of the air purifier and then remove all plastic packaging from the filter before using.



4. Lift the main body of the air purifier, plug in the power cord, place the body back onto the base, and rotate it in the direction of the arrow to the indicated position.

**Note:** 1. Make sure the side labeled "This side must face upwards" is facing up.  
2. Ensure that the power cord inside the air purifier is successfully plugged in.



5. Place the air purifier in a suitable and stable location, and prepare it for power connection and use.

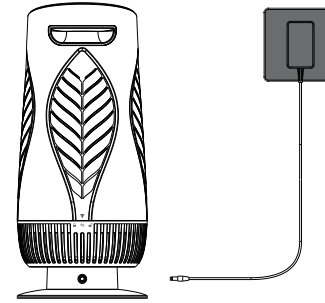
## Using Your Air Purifier

### 1. Install the Air Purifier

Place the Air Purifier on a stable, flat surface.

### 2. Charge Your Air Purifier

Connect the power cable to an outlet.



### 3. Power On/Off

**Note:**

When the air purifier is powered on, it will enter the self-check mode. All indicators on the screen will light up, and the screen will turn off after 3 seconds. The buzzer will sound once, and the machine will enter standby mode. At this time, only the power button can be used.

3.1 In standby mode, lightly press the **Power button** to turn on the air purifier and enter the working state. The fan will default to the first-gear mode, and the following information will be displayed on the screen:

**a. Current Ambient Temperature** (C or F)

**b. Relative Humidity** (%RH)

**c. The TVOC Value (Total Volatile Organic Compounds)** (mg/m<sup>3</sup>)

**Note:**

When powered on for the first time, or when the machine loses power and is reconnected to the power source, the TVOC sensor needs to preheat for 3 minutes. During these 3 minutes, the displayed value for TVOC will be 0, and the TVOC icon will blink, indicating that the sensor is in the preheating phase. After 3 minutes, the preheating is complete, and the TVOC icon will remain lit, while the TVOC value can be displayed normally.

This preheating process ensures that the sensor can accurately detect and measure TVOC levels. Once the preheating is finished, you will be able to see the actual TVOC value. The TVOC sensor built into the purifier also responds to **alcohol gas**, so care should be taken to avoid placing the purifier in a high-concentration alcohol gas environment for a long time.

### d. Air Quality Level



0-0.5mg/m<sup>3</sup>:Green;0.5-1.0mg/m<sup>3</sup>:

Yellow;1.0-9.9mg/m<sup>3</sup>:Red;

The color of the ambient light on the machine body will change synchronously.

### e. Filter Indicator

When the filter life falls below 10% (which is 200 hours out of a total of 2,000 hours), the filter indicator light will turn red and blink.

