

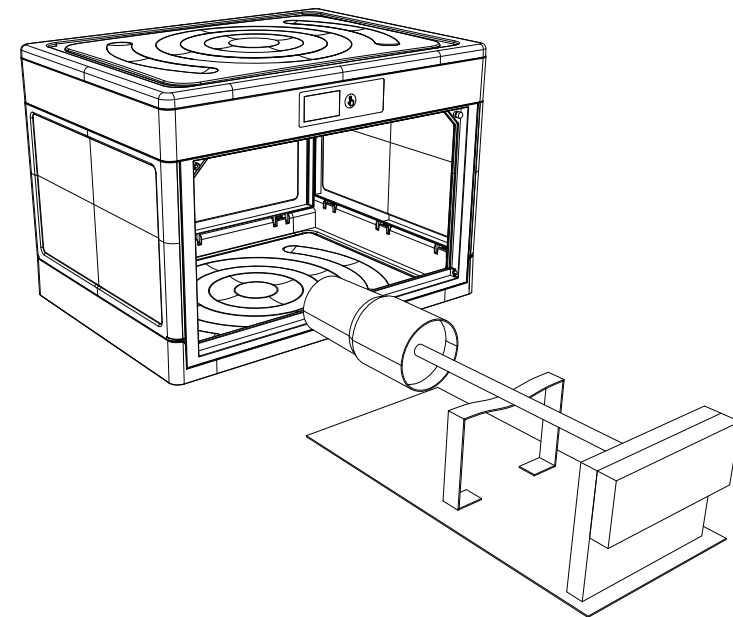
5. After finishing, open the front door and take out the cup tinner.

IV NOTE

1. The actual use effect is affected by the temperature and humidity of the environment, if it is not completely cured after one run, it can be put into the machine again for curing;.
2. During use, the machine surface temperature is high, please be careful not to be burned, please do not cover any objects on the machine surface.
3. Please do not disassemble this product by yourself.
4. This product should be used in the process of moisture-proof, waterproof, dustproof, away from high temperature and humid environment.

Resiners

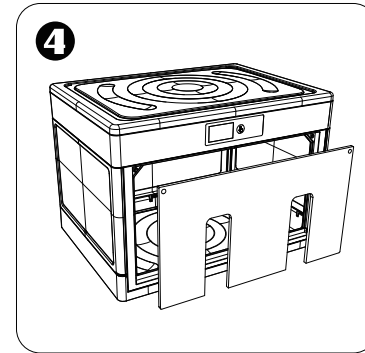
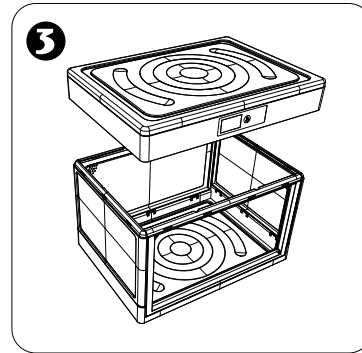
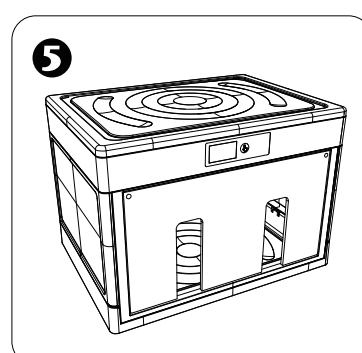
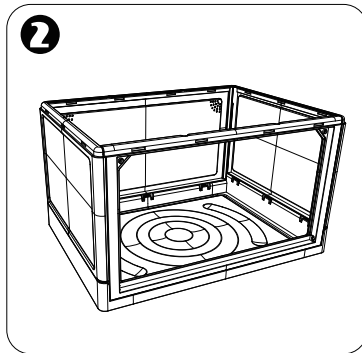
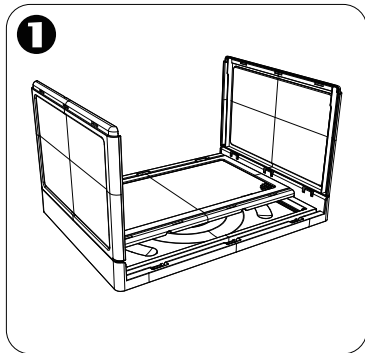
Tumbler Curing Machine



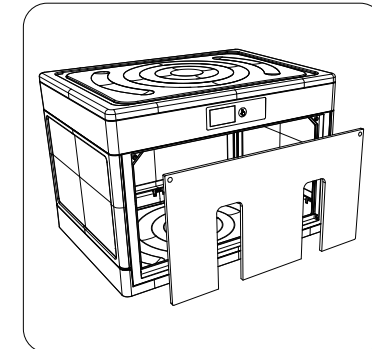
I TECHNOLOGY PARAMETERS

Main Material	HIPS+PET
Product Size	27*27,5*38 cm/10,6*10,8*15 inch
Working Voltage	110V
Working temperature	10~60 C /50~140 F

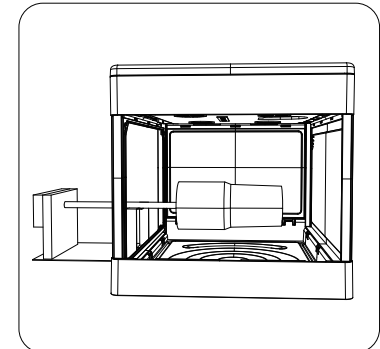
II ASSEMBLY INSTRUCTION



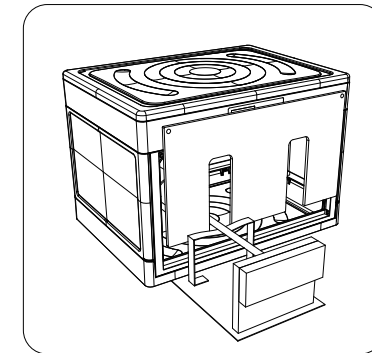
III USAGE



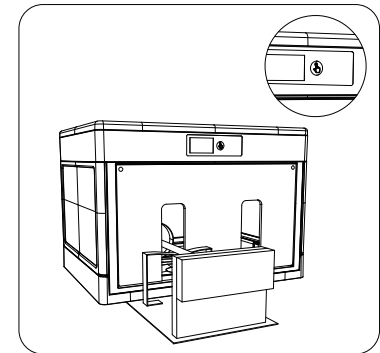
1. Open the front door and stick the front of the cup tuner into the curing machine.



2. Be careful not to reach too far inside and keep the cup at a certain distance from the inside of the machine.



3. Close the front door.



4. Turn on the machine power, press the power button and start automatic operation.