

**CHEFMAN**<sup>®</sup>

---

# ELECTRIC WINE OPENER

## USER GUIDE

- Safety Instructions
- Features
- Operating Instructions
- Notes
- Terms and Conditions
- Warranty Registration

RJ42-BP-BLACK



# COOKING FORWARD™

## Welcome!

Whether this is your first Chefman® appliance or you're already a part of our family, we're happy to be in the kitchen with you! With your new battery-powered Electric Wine Opener, you can quickly uncork wine bottles at the touch of a button. The four-piece set includes all you need for stress-free sipping. Aside from the sleek, ergonomic opener, you'll find a foil cutter, a wine pourer that encourages aeration while discouraging drips, and a hand-pump vacuum stopper to keep open bottles fresh.

We know you're excited to start uncorking, but please take a few minutes to read our directions, safety instructions, and warranty information.

From our kitchen to yours,

**The Chefman® Team**



## **READ ALL INSTRUCTIONS BEFORE USE**

**For your safety and continued enjoyment of this product, always read the instruction manual before using.**

# **CONTENTS**

- 1** Safety Instructions
- 4** Features
- 5** Operating Instructions
- 9** Notes
- 11** Terms and Conditions
- 13** Warranty Registration

# IMPORTANT SAFEGUARDS

When using electrical appliances, basic safety precautions should always be taken, including the following:

1. **READ ALL INSTRUCTIONS.**
2. To protect against the risk of electrical shock, do not put the wine opener in water or other liquids.
3. This appliance should not be used by or near children or individuals with certain disabilities.
4. This appliance is not intended for use by persons (including children) with reduced physical or mental capabilities, or lack of experience and knowledge, unless they have been given supervision or instruction concerning the appliance by a person responsible for their safety.
5. Children should be supervised to ensure that they do not play with the appliance.
6. Avoid contact with all moving parts.
7. Never put the wine opener near a hot burner, in an oven, or in a dishwasher.
8. Do not operate if the appliance malfunctions. Contact Chefman® Customer Support.
9. Do not use for anything other than intended use.

# IMPORTANT SAFEGUARDS

10. Keep hands and utensils away from the corkscrew during operation to reduce the risk of personal injury and/or damage to the wine opener.
11. **WARNING:** The corkscrew is **SHARP**. Handle with care both when using and cleaning the product.
12. Always place the appliance on a firm and stable surface when not in use.
13. The use of attachments not recommended or sold by Chefman® may cause fire, electric shock, or injury.
14. Never use abrasive cleaning agents or abrasive cloths when cleaning the wine opener.
15. Before using for the first time, remove all packaging, and wash and dry parts.
16. To avoid overheating the motor, do not use the wine opener for more than 10 minutes continuously. Allow the motor to cool between uses.
17. **WARNING:** To avoid the risk of injury, do not touch the corkscrew when it is rotating.
18. Never force the wine opener onto a bottle or attempt to speed up the mechanism. The opener works best when it is operated at its intended speed.

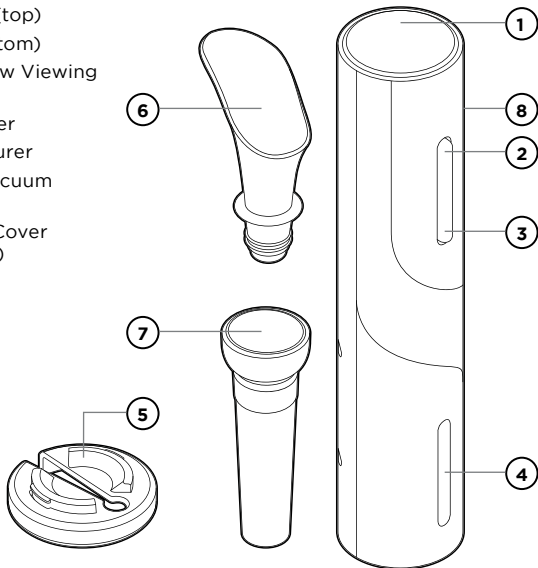
## IMPORTANT SAFEGUARDS

19. Do not touch or adjust the wine opener's mechanism or the corkscrew spiral. Hold the wine opener only by its housing.
20. Do not attempt to open bottles if the button is not working correctly.
21. Do not attempt to open the wine opener. It has no serviceable parts. Your electric wine opener is guaranteed for one year. In the event of a malfunction in this time, please contact Chefman<sup>®</sup> Customer Support.
22. At the end of this product's life, the unit and/or batteries should be recycled in accordance with local recycling laws.
23. For use with cork-sealed bottles only.

**HOUSEHOLD USE ONLY**  
**SAVE THESE INSTRUCTIONS**

## FEATURES

1. Wine Opener
2. Release (top)
3. Pull (bottom)
4. Corkscrew Viewing Window
5. Foil Cutter
6. Wine Pourer
7. Pump Vacuum Stopper
8. Battery Cover (on back)

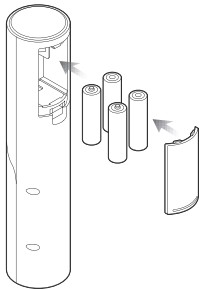


# OPERATING INSTRUCTIONS

## HOW TO INSTALL BATTERIES

The wine opener requires four AA alkaline batteries to operate. Please note that batteries are not included.

1. Place a finger in the divot on the back of the wine opener and lift off the battery cover.
2. Insert 4 AA batteries according to the positive and negative terminals.
3. Slide the top of the battery cover into the opening, then press firmly closed.



## HOW TO USE THE FOIL CUTTER

The foil cutter easily removes the foil cap from the wine bottle with a nice, clean cut.

Place the circular blade on top of the bottle around the cap, squeeze the sides of the cutter, and twist to remove the foil neatly and safely.

**CAUTION:** The foil-cutter blade is sharp. Avoid contact with fingers.

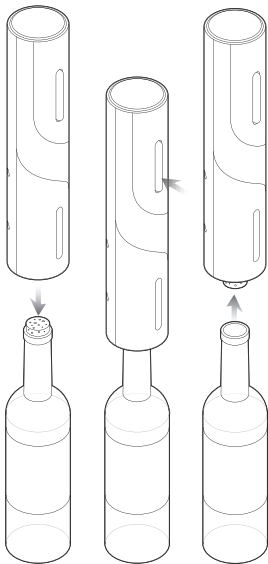


# OPERATING INSTRUCTIONS

## HOW TO USE THE WINE OPENER

The wine opener effortlessly removes natural and synthetic corks from wine bottles. Use it only for wine bottles sealed with corks.

1. With the bottle resting on a firm work surface, use one hand to steady the bottle and the other to position the bottom of the opener on the wine bottle over the cork. Keep the opener upright and in line with the bottle as much as possible. (If you hold the electric wine opener at an angle to the bottle, it will not remove the cork properly.)
2. While holding the opener firmly and pressing down, press and hold PULL, the lower part of the button. The corkscrew will turn in a clockwise direction, pierce the cork, then remove it from the bottle. This will take 6 to 8 seconds. Once the cork is completely out, the opener will automatically stop. Release the button and remove the opener from the bottle.

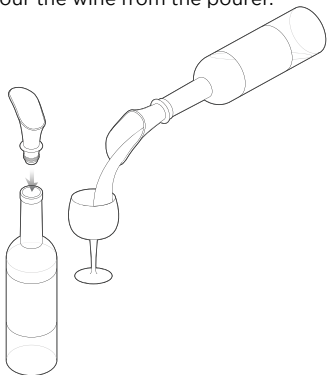


## OPERATING INSTRUCTIONS

3. To release the cork from the opener, press and hold **RELEASE**, the upper part of the button. The screw drill will gradually release the cork completely. **CAUTION:** Keep fingers away from the rotating corkscrew.

### HOW TO USE THE WINE POURER

To prevent spills and encourage aeration, put the wine pourer on your wine bottle after opening. Simply insert it firmly into the bottle neck. Tilt the bottle to pour the wine from the pourer.

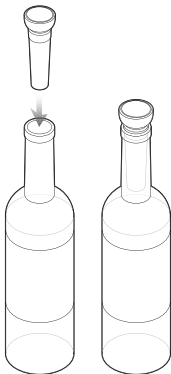


# OPERATING INSTRUCTIONS

## HOW TO USE THE VACUUM PUMP STOPPER

If you have not finished your bottle of wine, use the pump stopper to keep the remaining wine fresh.

To use, insert the stopper firmly into the bottle neck; it will stick out some. Pump the handle up and down—about 15 times for a half-full bottle. Store wine with the stopper in place, and drink within a week for best flavor.



## NOTES

---

---

---

---

---

---

---

---

---

---

---

---

---

---

---

---

---

---

---

## NOTES

---

---

---

---

---

---

---

---

---

---

---

---

---

---

---

# TERMS AND CONDITIONS

## Limited Warranty

RJ Brands, LLC d/b/a Chefman® offers a limited 1-year Warranty (the “Warranty”) available on sales through authorized distributors and retailers only. Please note that this Warranty becomes valid from the date of initial retail purchase and that the Warranty is non-transferable and applies only to the original purchaser.

This Warranty is void without proof of purchase within the United States and Canada. Please be aware that this Warranty supersedes all other warranties and constitutes the entire agreement between the consumer and Chefman®. Any changes to the Terms and Conditions of this Warranty must be in writing, signed by a representative of Chefman®. No other party has the right or ability to alter or change the Terms and Conditions of this Warranty.

We may ask you to please submit, via email, photos and/or video of the issue you are experiencing. This is to help us better assess the matter and possibly offer a quick fix. Photos and/or video may also be required to determine warranty eligibility.

We encourage you to register your product. Registering can make the Warranty process easier and can keep you informed of any updates or recalls on your product. To register, follow the directions on the Chefman® Warranty Registration page in the Chefman® User Guide. Please retain your proof of purchase even after registering. In the event that you do not have proof of your purchase date, we may declare your Warranty void or we may, at our sole discretion, apply the date of manufacture as the purchase date for purposes of this Warranty.

# TERMS AND CONDITIONS

## Limited Warranty

### WHAT THE WARRANTY COVERS

- **Manufacturer Defects** - Chefman® products are warranted against defects in material and workmanship, under normal household use, for a period of 1 year from the date of purchase when used in accordance with the directions listed in the Chefman® User Guide. If your product does not work as it should, please contact Customer Support at support@chefman.com so that we may assist you.

### THIS WARRANTY DOES NOT COVER

- **Misuse** - Damage that occurs from neglectful or improper use of products, including, but not limited to, damage that occurs as a result of usage with incompatible voltage, regardless of whether the product was used with a converter or adapter. See Safety Instructions in the Chefman® User Guide for information on proper use of product;
- **Poor Maintenance** - General lack of proper care. We encourage you to take care of your Chefman® products so that you may continue to enjoy them. Please see Cleaning and Maintenance directions in the Chefman® User Guide for information on proper maintenance;
- **Commercial Use** - Damage that occurs from commercial use;
- **Altered Products** - Damage that occurs from alterations or modifications by any entity other than Chefman® such as the removal of the rating label affixed to the product;
- **Catastrophic Events** - Damage that occurs from fire, floods, or natural disasters; or
- **Loss of Interest** - Claims of loss of interest or enjoyment.

# CHEFMAN® WARRANTY REGISTRATION

## What do I need to register my product?



- Contact Information
- Model Number
- Proof of Purchase (online confirmation, receipt, gift receipt)
- Date Code
- Access Code

**NOTE:** Label depicted here is an example.

## How do I register my product?

All you need to do is fill out a simple Chefman® registration form. You can easily access the form in one of the two ways listed below:

1. Visit [chefman.com/register](http://chefman.com/register).
2. Scan the QR code to access site:





# CHEFMAN® WARRANTY REGISTRATION

## **For product information**

Please visit us at [Chefman.com](http://Chefman.com).

EXCEPT WHERE SUCH LIABILITY IS REQUIRED BY LAW, THIS WARRANTY DOES NOT COVER, AND CHEFMAN® SHALL NOT BE LIABLE FOR, INCIDENTAL, INDIRECT, SPECIAL, OR CONSEQUENTIAL DAMAGES, INCLUDING WITHOUT LIMITATION, DAMAGE TO, OR LOSS OF USE OF THE PRODUCT, OR LOST SALES OR PROFITS OR DELAY OR FAILURE TO PERFORM THIS WARRANTY OBLIGATION. THE REMEDIES PROVIDED HEREIN ARE THE EXCLUSIVE REMEDIES UNDER THIS WARRANTY, WHETHER BASED ON CONTRACT, TORT OR OTHERWISE.

Chefman® is a registered trademark of RJ BRANDS, LLC.  
Cooking Forward™ is a trademark of RJ BRANDS, LLC.  
Intertek® is a registered trademark of Intertek Group, PLC.

# CHEFMAN®



**CHEFMAN.COM | @MYCHEFMAN**

©CHEFMAN 2021