

MODEL RJ05-R



		CUSTOMER SERVICE	
	GRILL POT & SKILLET	customerservice@chefman.com	
		888.315.6553	1 YEAR LIMITED WARRANTY



VISIT **CLUBCHEFMAN.COM** FOR RECIPES, VIDEO TUTORIALS
AND TIPS TAILOR-MADE FOR YOUR CHEFMAN PRODUCT.



READ ALL INSTRUCTIONS BEFORE USE

For your safety and continued enjoyment of this product, always read the instruction manual before using.

Contents

- 1 Introduction
- 2 Safety Instructions
- 4 Features
- 5 Operating Instructions
- 7 Cleaning and Maintenance
- 9 Notes
- 11 Terms and Conditions
- 12 Warranty Card

Introduction

Congratulations!

You have made an excellent choice with the purchase of this quality Chefman® product. By doing so you now have the assurance and peace of mind which comes from purchasing a product that has been manufactured to the highest standards of performance and safety, supported by the high quality standards of Chefman®.

We want you to be completely satisfied with your purchase so this Chefman® product is backed by a comprehensive manufacturer's 1-year warranty and an outstanding after sales service through our dedicated Helpline.

We hope you will enjoy using your purchase for many years to come.

If you require technical support or in the unlikely event that your purchase is faulty please telephone our Helpline for immediate assistance. Faulty product claims made within the 1-year warranty period will be repaired or replaced free of charge provided that you have satisfactory proof of purchase (keep your receipt). This guarantee is in addition to your statutory rights. Your statutory rights are not affected. This limited warranty does not apply in cases of damage caused by accident, improper use, abuse and force majeure.

This warranty gives you specific legal rights. You may have other legal rights that vary depending on where you live. Some states or provinces do not allow limitations on implied warranties or special, incidental, or consequential damages, so the foregoing limitations may not apply to you.

This limited warranty will be invalidated if the appliance is tampered with in any way whatsoever. In case of questions or technical problems please call the following toll-free help line number: 888-315-6553, Monday - Friday 9am to 5pm EST.

If the appliance has to be returned to us, it must be packed correctly as we cannot accept any responsibility for damage caused in transit. We recommend you use a traceable, insured delivery service.

SAFETY INSTRUCTIONS

IMPORTANT SAFEGUARDS

THIS APPLIANCE IS FOR HOUSEHOLD USE ONLY.

WARNING: When using electrical appliances especially when children are present, basic safety precautions should always be followed to reduce the risk of fire, electric shock, and/or injury to persons, including the following:

1. **Important:** Read all instructions carefully before first use.
2. Do not touch hot surfaces. Use handles or knobs.
3. To protect against fire, electrical shock and injury to persons, do not immerse cord, plug or the appliance in water or any other liquid.
4. Close supervision is necessary when any appliance is used by or near children.
5. Unplug from outlet when not in use and before cleaning. Allow the appliance to cool before putting on or taking off parts and before cleaning the appliance.
6. Do not operate any appliance with a damaged cord or plug or after the appliance malfunctions or has been damaged in any manner. Contact Chefman customer service for examination, repair or adjustment.
7. The use of accessory attachments not recommended by Chefman may result in fire, electric shock or injury.
8. Do not use outdoors.
9. Do not let the power cord touch hot surfaces or hang over the edge of the counter or table.
10. Do not place on or near a hot burner or in a heated oven.
11. Extreme caution must be used when using or moving the appliance while containing hot oil or other hot liquids.
12. Do not use the appliance for other than its intended use.
13. Always attach the plug to the appliance first, and then plug the cord into the wall outlet. To disconnect, turn control to "OFF" then remove the plug from the wall outlet.
14. Use only on a dry, level and heat-resistant surface.
15. This appliance should be operated on a separate electrical circuit from other operating appliances. If the electrical circuit is overloaded with other appliances, this appliance may not operate properly.
16. Use only the provided Chefman temperature control probe when operating this appliance.
17. This appliance is not intended for deep frying food.

SAVE THESE INSTRUCTIONS THIS APPLIANCE IS FOR HOUSEHOLD USE ONLY.

SAFETY INSTRUCTIONS

SHORT CORD INSTRUCTIONS

- a. This unit includes a short power-supply cord in order to reduce risks resulting from becoming entangled in or tripped over a longer cord.
- b. Longer extension cords are available and may be used if care is exercised in their use.
- c. If extension cord is used:
 1. The marked electrical rating of the extension cord should be at least as great as the electrical rating of the appliance;
 2. If the appliance is of the grounded type the extension cord should be a grounding type 3-wire cord; and
 3. The longer cord should be arranged that it will not drape over the counter top or tabletop where it can be pulled on by children or tripped over.

LINE CORD SAFETY TIPS

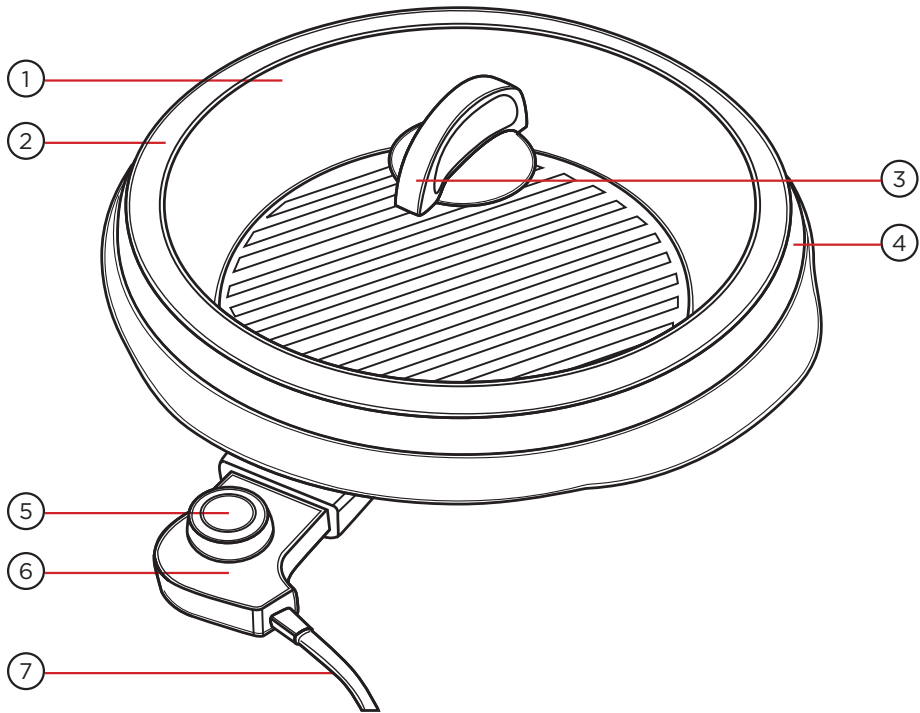
1. Never pull or yank on cord or the appliance.
2. To insert plug, grasp it firmly and guide it into outlet.
3. To disconnect appliance, grasp plug and remove it from outlet.
4. Before each use, inspect the line cord for cuts and/or abrasion marks. If any are found, this indicates that the appliance should be serviced and the line cord replaced. Please call Customer Service.
5. Never wrap the cord tightly around the appliance, as this could place undue stress on the cord where it enters the appliance and cause it to fray and break.

DO NOT OPERATE APPLIANCE IF THE LINE CORD SHOWS ANY DAMAGE OR IF APPLIANCE WORKS INTERMITTENTLY OR STOPS WORKING ENTIRELY.

CAUTION: To ensure continued protection against risk of electric shock, connect to properly grounded outlets only.

IMPORTANT: During the first few minutes of initial use, you may notice smoke and/or a slight odor. This is normal and should quickly disappear. It will not recur after appliance has been used a few more times.

Features



1. TEMPERED GLASS LID
2. CAST ALUMINIUM NONSTICK COOKING POT
3. HANDLE
4. COOL-TOUCH BASE
5. ADJUSTABLE TEMPERATURE CONTROL DIAL
6. REMOVABLE TEMPERATURE CONTROL UNIT
7. POWER SUPPLY CORD

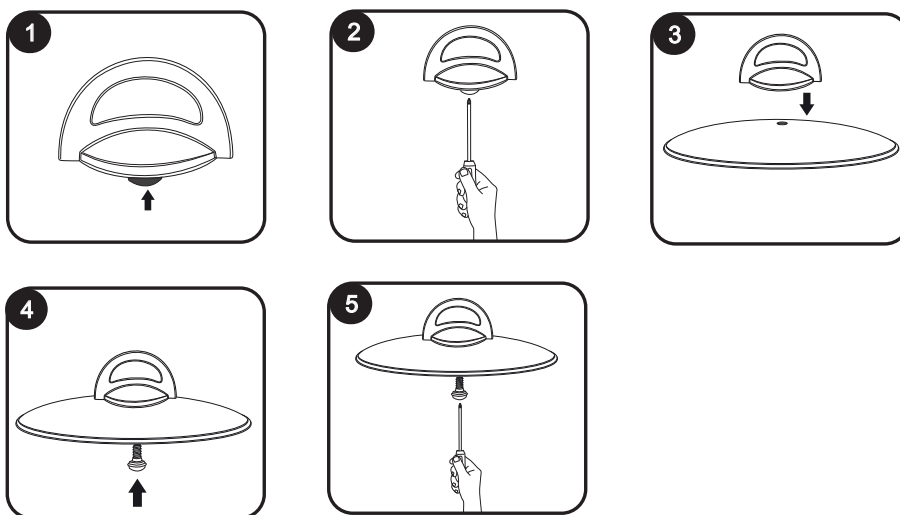
Operating Instructions

Before First Use

1. Remove all packaging materials.
2. Pull the cooking pot away from the cool-touch base.
3. Wash the cooking pot, base and lid with warm, soapy water using a sponge.
4. Rinse thoroughly to remove all soap residue.
5. Condition the nonstick surface of the cooking pan with oil or vegetable shortening.

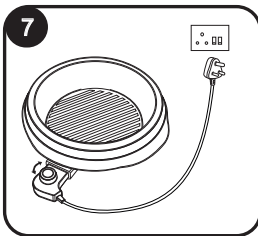
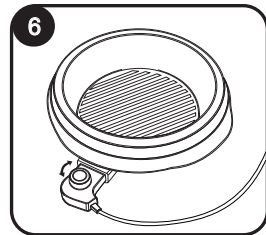
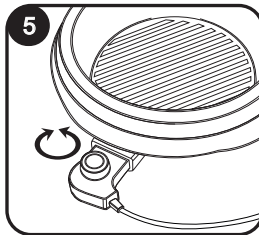
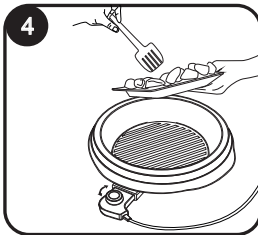
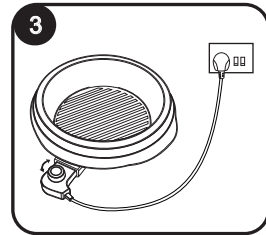
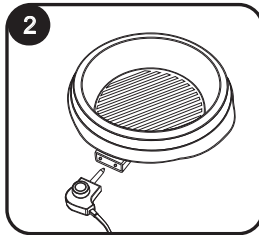
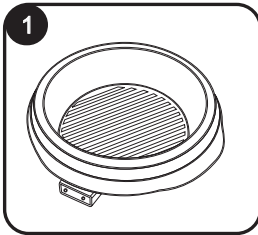
Note: Do not use abrasive cleaners or scouring pads. Never immerse the power cord.

To Assemble the Lid



1. Locate the lid handle. The screw needed to assemble the lid handle to the lid will be screwed into the lid handle.
2. Using a Phillips-head screwdriver, release the screw from the lid handle.
3. Place the lid handle on top of the lid, so that it lines up with the hole in the lid correctly.
4. Place the screw beneath the lid so that it fits correctly through the hole in the lid and into the lid handle.
5. Using a Phillips-head screwdriver, tighten the screw until the lid handle is securely attached to the lid.

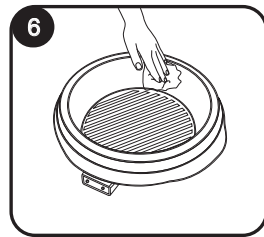
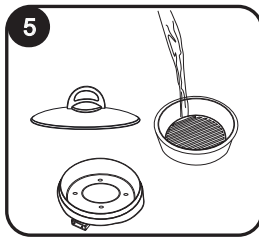
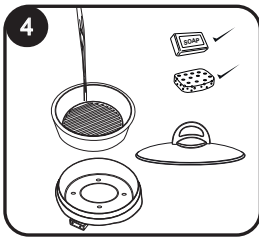
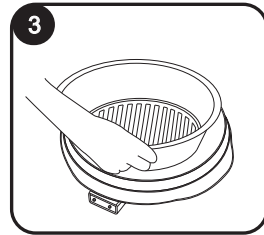
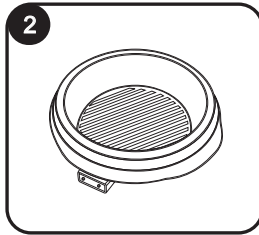
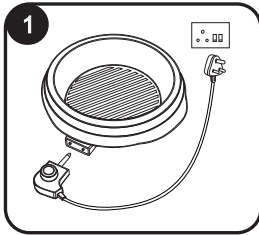
Operating Instructions



NOTE: Wooden, heat-proof plastic and nylon utensils are recommended. Metal utensils may scratch the non stick surface.

1. Place the cooking pot into the cool-touchbase. It should snap securely into place.
2. Plug the temperature control probe into the port in the cool-touch base.
3. Turn the temperature control dial to the "OFF" position. Plug the power supply cord into an available power outlet.
4. Add ingredients to be cooked to the cooking pot.
5. Turn the temperature control dial to the desired setting. The indicator light will illuminate.
6. The indicator light will turn off once the cooking pot has reached the selected temperature. During operation, the indicator light will turn on and off, indicating the proper temperature is being maintained.
7. When cooking has finished, turn the temperature control dial to the "OFF" position and unplug the power supply cord from the power outlet.

Cleaning & Maintenance



Cleaning & Maintenance

Always unplug unit and allow to cool completely before cleaning.

1. Disconnect the plug from the wall outlet, then remove the temperature control probe from the appliance.
2. Allow the unit to completely cool.
3. Pull the cooking pot away from the cool-touch base.
4. Wash the cooking pot, base and lid with warm, soapy water, using a sponge.
5. Rinse thoroughly to remove soap residue.
6. Dry thoroughly with a soft cloth.

NOTE: All parts are dishwasher safe except the plug.

Terms & Conditions

Limited Warranty

CHEFMAN® LLC warrants, subject to the conditions stated below, that from the date of purchase, this product will be free from mechanical defects for a period of ONE (1) year. CHEFMAN® LLC, at its option, will repair or replace this product found to be defective during the warranty period. Should this product become defective by reason of improper workmanship or material defect during the specified warranty period, CHEFMAN® LLC will repair or replace the same effecting all necessary parts replacements for a period of one year from the date of purchase. If product is no longer available we will replace it with a product of equal value. Transportation charges on parts, or products in whole, submitted for repair or replacement, under this warranty, must be borne by the purchaser. This warranty is void if the product is used for other than single-family household use or subjected to any voltage and waveform other than as specified on the rating label (e.g., 120V - 60 Hz).

This warranty is available to consumers only. You are a consumer if you own a CHEFMAN® product that was purchased at retail for personal, family or household use. Except as otherwise required under applicable law, this warranty is not available to retailers or other commercial purchasers or owners.

CONDITIONS: This warranty is valid for the original USA and Canada retail purchaser from the date of initial retail purchase and is not transferable. Keep the original sales receipt. Proof of purchase is required to obtain warranty service or replacement. Dealers, service centers, or retail stores do not have the right to alter, modify or in any way, change the terms and conditions of this warranty. Warranty registration is not necessary to obtain warranty on CHEFMAN® LLC Products. Save your proof of purchase receipt.

ABOUT YOUR PRODUCT WARRANTY: Most warranty repairs are handled routinely, but sometimes requests for warranty service may not be appropriate. For example, warranty service would NOT apply if the product damage occurred because of misuse, lack of routine maintenance, shipping, handling, 3rd party warehousing or improper installation. Similarly, the warranty is void if the manufacturing date or the serial number on the product has been removed or the equipment has been altered or modified. During the warranty period, the authorized service dealer, at its option, will repair or replace any part that, upon examination, is found to be defective under normal use and service.

NORMAL WEAR: This warranty does not cover normal wear of parts or damage resulting from any of the following: negligent use or misuse of the product; improper voltage or current; use contrary to the operation instructions; deviation from instructions regarding storage and transportation; repair or alteration by anyone other than CHEFMAN® LLC or an authorized service center. Further, the warranty does not cover Acts of God, such as fire, flood, hurricanes and tornadoes. CHEFMAN® LLC shall not be liable for any incidental or consequential damages caused by the breach of any express or implied warranty. Except to the extent prohibited by applicable law, any implied warranty of merchantability or fitness for a particular purpose is limited in duration to the duration of the above warranty. Some states, provinces or jurisdictions do not allow the exclusion or limitation of incidental or consequential damages or limitations on how long an implied warranty lasts, so the above limitations or exclusion may not apply to you. This warranty gives you specific legal rights, and you may also have other rights that vary from state to state or province to province.

HOW TO OBTAIN WARRANTY SERVICE: If your CHEFMAN® product should prove to be defective within the warranty period, we will repair it, or if we think necessary, replace it. To obtain warranty service, simply email customerservice@chefman.com or call our toll-free number 1-888-315-6553 for additional information from our Customer Service Representatives, or send the defective product to Customer Service at Chefman, 1 Sharp Plaza, Mahwah, NJ 07495.

This warranty is effective for the time periods listed above and subject to the conditions provided for within this policy.

CALIFORNIA RESIDENTS ONLY:

California law provides that for In-Warranty Service, California residents have the option of returning a nonconforming product (A) to the store where it was purchased or (B) to another retail store which sells CHEFMAN® products of the same type. The retail store shall then, at its discretion, either repair the product, refer the consumer to an independent repair facility, replace the product, or refund the purchase price less the amount directly attributable to the consumer's prior usage of the product. If the above two options do not result in the appropriate relief to the consumer, the consumer may then take the product to an independent repair facility if service or repair can be economically accomplished. CHEFMAN® and not the consumer will be responsible for the reasonable cost of such service, repair, replacement, or refund for nonconforming products under warranty.

CHEFMAN® is a registered trademark of RJ BRANDS, LLC.

Warranty



GRILL POT & SKILLET



All data fields are required in order for us to process your request:

Model Number: _____

Full Name: _____

Address: _____

Phone: _____ Email: (if applicable) _____

Date of Purchase*: _____

*We recommend you keep the receipt with this warranty card

Retail Store of Purchase: _____

Description of Malfunction:

Return your completed warranty card to:

RJ Brands
1 Sharp Plaza
Suite 207
Mahwah, NJ
07495

GRILL POT & SKILLET

MODEL:
RJ05-R

888.315.6553

customerservice@chefman.com

Phone lines available Monday to Friday, 9am-5pm EST

1-YEAR LIMITED WARRANTY



To log-in to ClubChefman.com follow the below steps:

1. Enter www.clubchefman.com into your web browser.
2. Click on "Sign Up Now".
3. Fill in the required information as prompted.
NOTE: "Place of Purchase" refers to the store at which you purchased your product.
4. Sign in using your User Name and Password.

**CLUB CHEFMAN ACCESS CODE:
2131359**

CHEFMAN®



RJBRANDS.COM | CLUBCHEFMAN.COM | CHEFMAN.COM