

Applications

Make	Model	Year	Type
Audi	A3 Cabrio	2009-2015	
	A3/A3 Sportback	2009-2013	
	A4	2008-2016	
	A4 Allroad	2009-2015	
	A4 Quattro	2009-2015	
	A5 Cabriolet	2009-2015	
	A5 Coupe	2009-2015	
	A5 Sportback	2009-2015	
	A6	2009-2015	
	Q3	2008-2016	
Q5	2008-2016		
TT	2008-2015		
Seat	Alhambra	2013-2015	Cupra GTI GTI TSI TFSI TFSI FlexFuel TSI TSI FR TSI Freetrack vRS
	Alhambra	2008-2012	
	Altea/Altea XL	2009-2012	
	Exeo	2009-2016	
	Leon	2008-2015	
Toledo	2011-2015		
Skoda	Octavia II	2008-2016	
	Superb II	2009-2016	
	Yeti	2008-2014	
Volkswagen	Beetle	2009-2014	
	CC	2011-2015	
	Eos	2009-2016	
	Golf VI	2008-2013	
	Jetta	2008-2013	
	Passat	2008-2015	
	Passat CC	2008-2016	
	Scirocco	2008-2013	
	Sharan	2008-2014	
Tiguan	2009-2015		

Engine Code

1.6	CDAA, CDHA, CDHB, CJEB, CDAB, CGYA
2.0	CCZA, CDNB, CFKA, CCZC, CPSA, CESA, CATA, CCZB, CDND, CCZD

Our products are designed to be used correctly and with care for the purpose for which they are intended. No liability is accepted by Sonic for incorrect use of any of our products, and Sonic cannot be held responsible for any damage to personnel, property or equipment when using the tools. Incorrect use will also invalidate the warranty.

If applicable, the applications database and any instructional information provided has been designed to offer general guidance for a particular tool's use and while all attention is given to the accuracy of the data no project should be attempted without referring first to the manufacturer's technical documentation (workshop or instruction manual) or the use of a recognised authority such as Autodata.

It is our policy to continually improve our products and thus we reserve the right to alter specifications and components without prior notice. It is the responsibility of the user to ensure the suitability of the tools and information prior to their use.

SONIC

equipment

Instructions

Engine Timing Kit

VAG Petrol TFSi - 1.8, 2.0



829066 - Engine Timing Kit

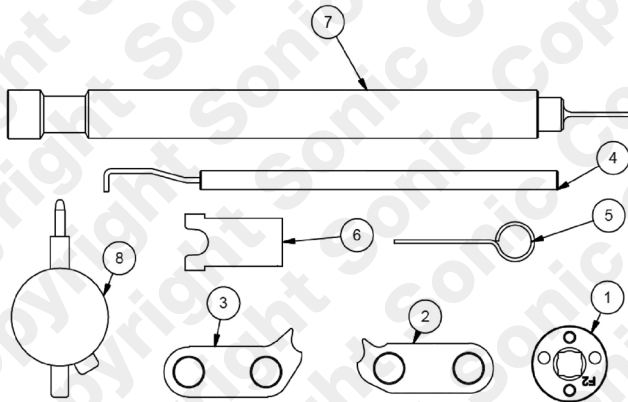
Description:

The 829066 kit has been designed to allow removal and replacement of the timing chain and camshaft sprockets on the 1.8/2.0 TFSi and TSi petrol engines commonly found in the Volkswagen Audi Group of vehicles

Description: 829066 is an 8 piece kit consisting of the components required to find piston TDC, hold the camshaft pulleys in position and lock the chain tensioners in their retracted positions.

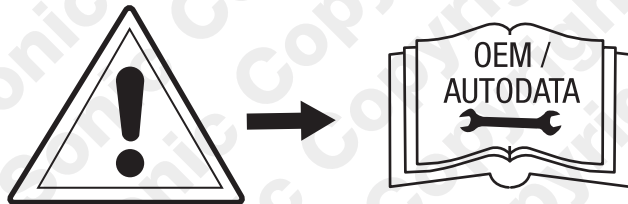
Components

Ref	Comp	OEM	Description
1		T10352	Camshaft Control Valve Tool (Double Ended)
2	4880268	T40271-1	Camshaft Clamp (Exhaust)
3	4880269	T40271-2	Camshaft Clamp (Inlet)
4	4880275	T40265	Oil Pump Tensioner Locking Pin
5	4880144	T40011	Tensioner Locking Pin (Type A)
6	4880294	T40267	Tensioner Locking Clip (Type B)
7	4880133	T10170	Tdc Injicator Adaptor
8	4880123	Vas6079	Dti Gauge

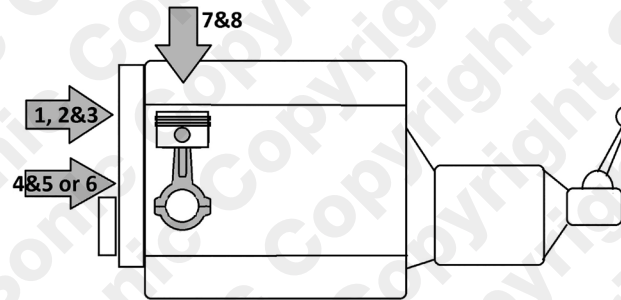


Instructions

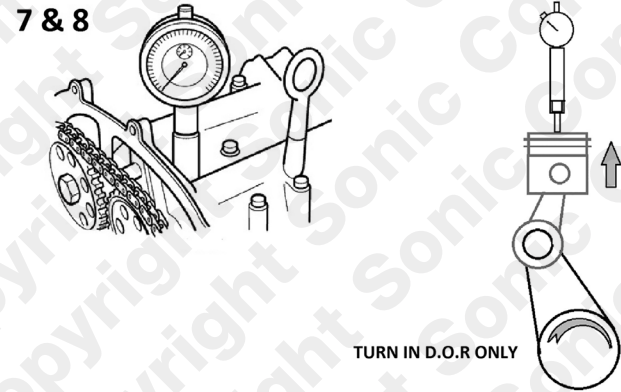
The following instructions are for guidance only. Please refer to OEM derived data such as the vehicles manufactures own data or Autodata. The use of these engine timing tools is purely down to the user's discretion and Sonic cannot be held responsible for any damage caused what so ever.



Instructions

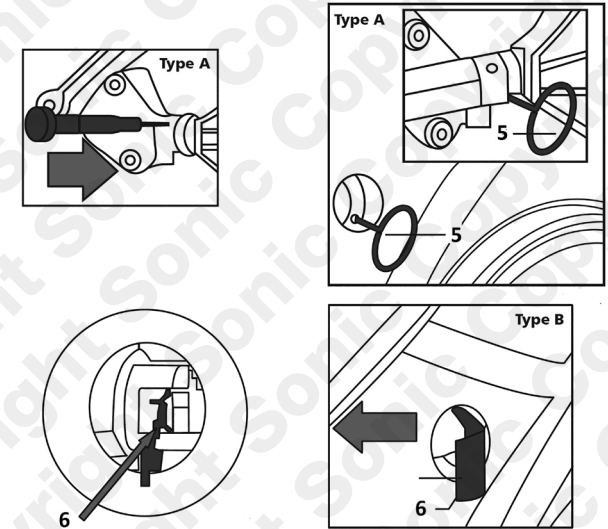
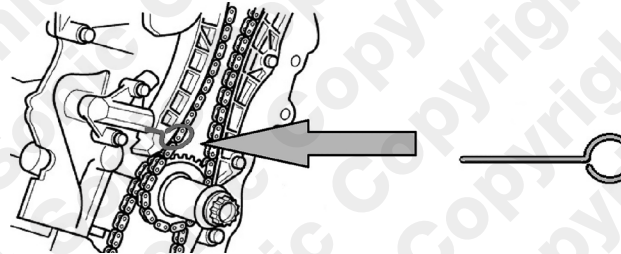


Align the crankshaft at TDC on cylinder number 1 using components 7 and 8.

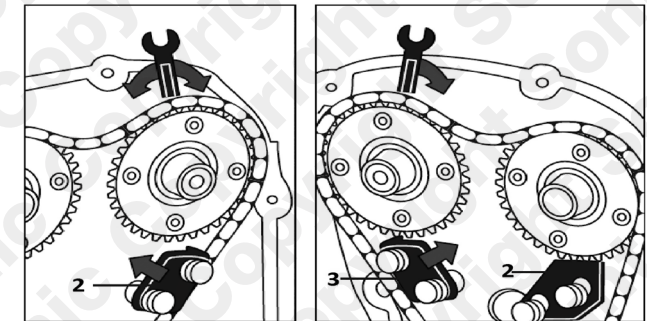


Tensioner Locking Pins/clip 4, 5 and 6
Component 4 is used to lock the oil pump chain tensioner in its retracted position when removing the oil pump.

Components 5 and 6 are used to lock the camshaft drive chain tensioner as shown. Use either 4 or 5 depending on tensioner type (A or B)



Use Components 2 and 3 to lock the Camshaft pulleys in their timed positions as shown.



Use component 1 to remove or refit the camshaft control valve after the removal of the electrical connections. Unscrew the Control Valve in a clockwise direction as shown.

