



BATA **INDUSTRIALS** **FOOTWEAR** **CATALOGUE**



BATA INDUSTRIALS
THE SAFETY BOOT

SAFETY ALWAYS COMES FIRST RIGHT?



DEAR FEET,

Companies often say "The safety of our workers always comes first".
But does it really? I'm sure it's their intention, but is it a fact?

It will not come as a surprise that we, Bata Industrials, want safety to be a fact.
Whether it is in a plant, distribution centre, production site, factory, or any other place
where professionals might encounter hazardous working conditions. Because
no matter how skilled people might be, they are always vulnerable.

We can decrease that vulnerability and turn it into safety. By making professionals stand
strong, be comfortable, walk with confidence, and stay safe under all circumstances.

That does not start with just a safety boot. That starts with The Safety Boots,
and we have a catalogue full of them.

Stay Safe

Martijn Mathot
Global President



BATA INDUSTRIALS
THE SAFETY BOOT

SERIOUSLY.

MANUFACTURING IN AUSTRALIA SINCE 1961

Our History

Founded in 1894, The Bata Shoe Organization is one of the world's leading manufacturers and retailers of quality footwear. With over 30,000 employees, 24 production facilities, 5,000 international retail stores and a presence in over 70 countries.

The company was first registered in the town of Zlín Czechoslovakia, from humble beginnings the small family business expanded rapidly under the vision and guidance of founder Thomas Bata. Thomas was a ninth generation shoemaker determined to become a manufacturer who could provide customers with value for their money.

Bata became an international business in the first half of the 20th century and by the second half of the century had established a true global footprint (production in Australia had commenced in 1961). A progressive and market leading pioneer of the modern footwear industry Bata is now an iconic brand recognised all around the world.

Bata Industrials In Australia

Bata Shoe Company Pty Ltd was established in Australia 1961. Production commenced in Mornington, Victoria in 1981, and remains our Head Office location today. The Australian company is registered as a quality endorsed company complying with ISO 9001 and AS 2210.3 and is proud to be part of the world wide organization. With a strong industrial focus, the company manufactures and wholesales over a million pairs of footwear each year through its industrial and wholesale retail business streams.

A working relationship between the Bata Australian and European industrial companies was the platform for the development of an association between the specialised industrial companies within the organization. In 2004 the first meeting of the Bata Industrials World Wide Group was held at Bata Best in the Netherlands. Involving companies from South America, South Africa, Europe, Australia and New Zealand, the enormous potential for the group to synergize information, product development, manufacturing, and sourcing became apparent. The combined technical and R&D resources of the group have lead to a cross pollination of ideas and the capacity for production development has never been stronger. This is epitomized by the development and re-structuring of the Bata Industrials ranges in Australia between 2005 and 2007.

THE SAFETY BOOT

Contents

Australian Story	4
Features Glossary	6-7
Avenger	8-11
Helix Ultra	12-15
Naturals	16-17
Naturals Rubber	18-19
Ladies	20-21
Emergency Services	22-23
Sportmates	24-25
Mates	26-27
Australian made	28-29
PVC Recycle Program	30-31
Safety Gumboots	32
Non Safety Gumboots	33
Accessories	34
Comfort Guarantee	35
Manufacturers Warranty	35
Range Index	36-37
Size Chart	37
Find Your Boot	38
The Safety Standards	39



FOOTWEAR FEATURE ICONS

Use the symbols displayed on this page to see each boot's performance characteristics. By referring to these icons as you read through this catalogue, you'll see the special features for each different style of boot. Use this information to help determine which Bata Industrials style is suitable to your needs. You will also notice that many of our boots cater for specialised industry specific requirements. Please read the product descriptions closely or visit us online at www.bataindustrials.com.au for more information.

COMFORT FEATURES

- COMFORT FOOTBED**
For increased underfoot cushioning performance.
- ORTHOLITE INSOLE**
Provides superior cushioning, unmatched comfort, breathability and durability.
- BLOOM INSOLE**
High performance algae-based foam insoles that offer a sustainable replacement to traditional petroleum based insole materials.
- COOL COMFORT LINING**
Premium comfort lining provides a soft and breathable boot interior to keep your feet dry and cool.
- DRI-FREEZE LINING**
A performance fabric designed to manage the moisture and breathability within the boot environment, keeping the foot surface cool, dry and comfortable.
- RECOIL ERT CUSHIONING**
Innovative cushioning technology made from super elastic material that is extremely lightweight and durable.
- BASF ELASTOPAN MIDSOLE**
Soft cushioned midsole that generates outstanding comfort and is super lightweight.
- LIGHTWEIGHT MIDSOLE**
Soft cushioned midsole that generates outstanding comfort and is super lightweight.
- D30® IMPACT PROTECTION**
For enhanced comfort & impact absorption to help soften the weight of working on your feet all day.
- FLEXIBLE MIDSOLE**
A soft cushioned midsole providing comfort, flexibility and a high level impact absorption.

PROTECTION FEATURES

- STEEL TOECAP**
Steel toe cap offers protection against injuries and can withstand a force of up to 200 joules.
- ALLOY TOECAP**
Lightweight toe cap offers protection against injuries and can withstand a force of up to 200 joules.
- COMPOSITE TOECAP**
Non metal toe cap offers protection against injuries and can withstand a force of up to 200 joules.
- CARBON FIBRE TOECAP**
Super lightweight toe cap offers protection against injuries and can withstand a force of up to 200 joules.
- STEEL MIDSOLE**
Protects the foot against sharp objects penetrating through the sole.
- COMPOSITE MIDSOLE**
Non metal midsole that protects the foot against sharp objects penetrating through the sole.
- SCUFF CAP PROTECTION**
For added toe scuff and abrasion protection to prolong the life of the boot.
- ELECTRIC HAZARD PROTECTION**
Designed to significantly minimise the flow of electricity to the ground, reducing the possibility of electrocution.
- ANTISTATIC**
Minimises the amount of static electricity build-up on your body.
- METATARSAL PROTECTION**
The Met-Guard provides a protective barrier to reduce and absorb impact, whilst supporting natural foot movement.
- ANKLE PROTECTION**
High impact absorbing guard to protect the ankle from side impact.

SPECIAL FEATURES

- 3M™ SCOTCHGARD™ PROTECTOR**
Added leather protection from oil and water and also makes cleaning easier.
- 3M™ THINSULATE™ INSULATION**
Fine microfibers help trap air and block body radiant heat loss, making it an efficient insulator.
- KEVLAR STITCHING**
Sewing thread that is made from heat and fire retardant meta-aramid fiber.
- METAL FREE**
Made with composite components and a great choice for workers where metal detection is present.
- AIRPORT FRIENDLY**
Ideal for travelling through metal detection portals and airport security.
- LADIES FITTING**
Designed specifically to fit a ladies foot. Available only in ladies sizes.
- NON SAFETY**
Boot with no safety toe cap, and is a great option for when not restricted to wearing safety footwear.
- LIFE ODOUR CONTROL LINING**
Natural plant-based antimicrobial protection that eliminates 99% of bacteria that causes bad smell.

BOOT UPPER FEATURES

- LEATHER UPPER**
High quality leather for added safety and durability.
- ABRASION RESISTANT MESH UPPER**
Featuring a breathable mesh upper that is also abrasion resistant to help prolong the life of the shoe.
- MICROFIBER UPPER**
Water resistant and easy to clean with a leather look finish.
- WATER RESISTANT**
Resistant to water penetrating the inside of the boot.
- ZIP SIDED**
Allows you to quickly slip in and out of your boots without having to stop and use the laces.

SOLE FEATURES

- SLIP RESISTANT**
Tested to meet the Australian/New Zealand standard for slip resistance.
- TUNNEL SYSTEM®**
This design ensures that the shoe will absorb shock from impact, thus relieving pressure on your joints.
- DURABLE HEAT RESISTANT PU OUTSOLE**
Resistant to oil, acid, abrasion & heat up to 130°C.
- DURABLE HEAT RESISTANT TPU OUTSOLE**
Resistant to oil, acid, abrasion & heat up to 130°C.
- HEAT RESISTANT RUBBER OUTSOLE**
Durable rubber outsole can withstand extremely high temperatures of up to 300°C.
- FUEL & OIL RESISTANT OUTSOLE**
Outsole is resistant to fuel & oil substances.
- SHOCK ABSORBING DISC**
Shock absorbing technology fused within the heel strike zone for increased impact protection.

AVENGER THE SUPER BOOT.

Introducing Avenger, the latest advancement in workboot innovation. Fusing style, safety and athletic cushioning into a super lightweight & metal free heavy industrial workboot. Its packed full of features to provide superior all round comfort and foot protection.

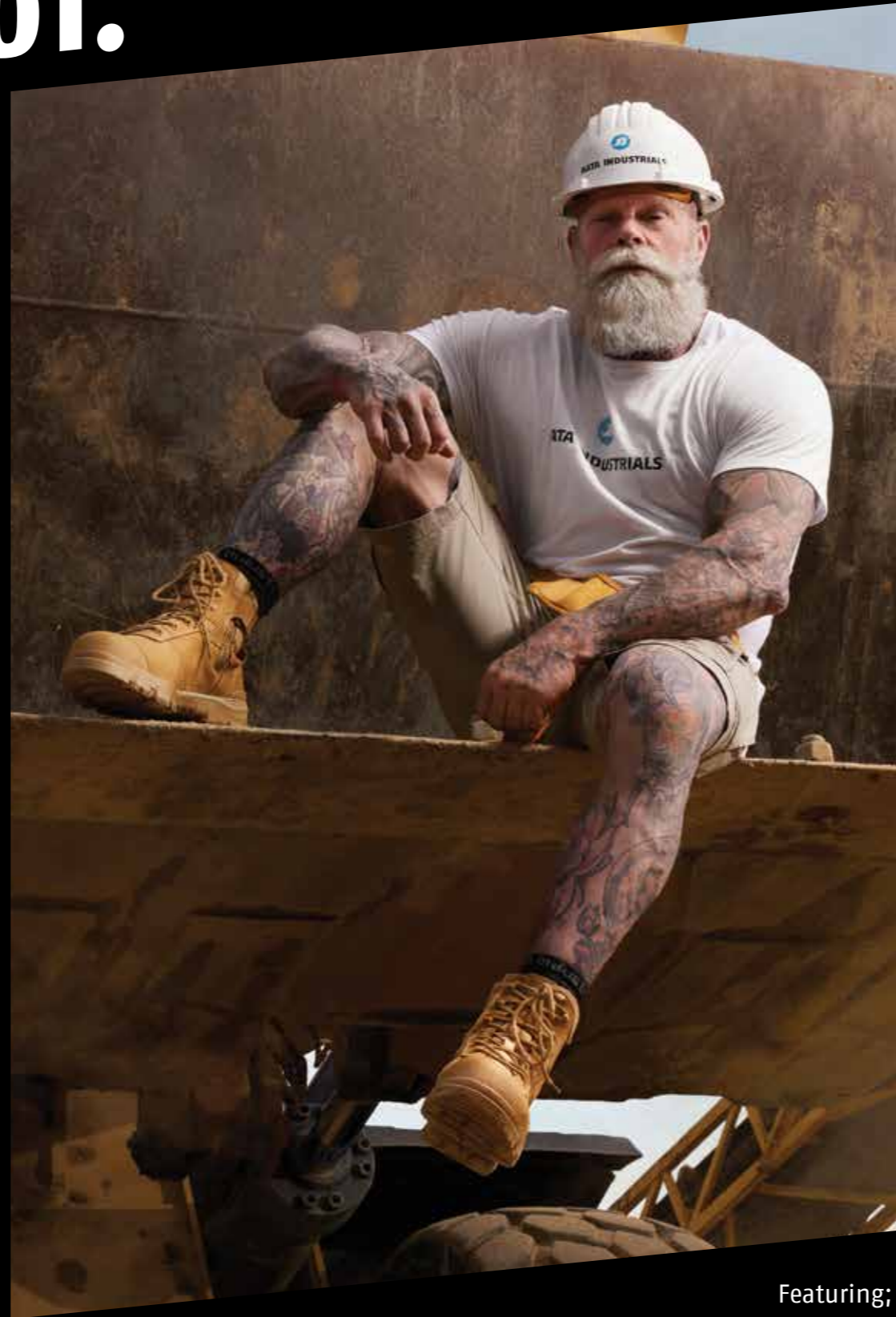
The secret to the Avenger's superior comfort levels is in it's midsole. Made from hundreds of expanded beads fused together to deliver the wearer endless rebound energy, outperforming any other cushioning material in the safety industry.

With all over foot protection such as; carbon fibre toecap, TPU toe scuff, D30 ankle and metatarsal impact protection, Armour Layer anti-penetration midsole and EH protection you can understand why it is known as THE SUPER BOOT.

ENERGY RETURN



MIDSOLE TECHNOLOGY



Featuring;

RECOIL ERT
ENERGY RETURN TECHNOLOGY

Scotchgard
PROTECTANT

D30

Life Natural

CARBON-FIBRE
SAFETY TOE

Kevlar Ortholite

ARMOUR LAYER
PENETRATION RESISTANT MIDSOLE

DRI-FREEZE

AVENGER

DUAL DENSITY RECOIL ERT/RUBBER

Standard Certification

AS 2210.3:2019 SB P WRU M
FO AN E HRO SRC
ASTM F2413-18 EH PR

3M™ Scotchgard™ Protector
Premium leather uppers with added leather protection from oil and water and also makes cleaning easier.



D30 Metatarsal & Ankle Protection
Provides a protective barrier to protect the metatarsal and ankle areas from high impact.



Carbon Fibre Safety Toecap
Super lightweight toe cap offers protection against injuries and can withstand a force of up to 200 joules.



Toe Scuff Protection
For added toe scuff and abrasion protection to prolong the life of the boot.



Encapsulated Rubber Outsole
Designed to meet the slip, fuel, oil, abrasion & heat resistant to 300°C standard AS 2210.3.



Kevlar Stitching
Heat and fire retardant stitching that helps prolong the life of the boot.



High Quality Leather Upper
High quality leather uppers for added safety and durability



Dri-Freeze Lining
A performance fabric designed to manage the moisture and breathability within the boot environment, keeping the foot surface cool, dry and comfortable.



Life Odour Control Lining
Natural plant-based antimicrobial protection that eliminates 99% of bacteria that causes bad smell.



Zip Sided
Allows you to quickly slip in and out of your boots without having to stop and use the laces.



Ortholite® Insole
Provides superior cushioning, unmatched comfort, breathability and durability.



Armour Layer Anti-Penetration
Super lightweight non-metal midsole that protects the foot against sharp objects penetrating through the sole.



Recoil Energy Return Technology®
Advanced energy return cushioning encapsulated within the midsole to provide endless comfort.



Electric Hazard Protection
Designed to significantly minimise the flow electricity to the ground, reducing the possibility of electrocution.

MEET BOOST MASTER BOB.
BOB promotes all of our collections that give feet a huge BOOST. NEVER BE BORING we promised ourselves with the introduction of our new branding. Well, BOB is far from boring and our new Avenger work boot certainly isn't either. Once you experience the Avenger you will understand why BOB calls them THE SUPER BOOT.



AVENGER 804 88830 Wheat Zip Sided Safety Boot

- > Carbon fibre safety toe
- > Wheat nubuck leather upper
- > External TPU scuff toe cap
- > YKK zip side for ease of access
- > Metatarsal & ankle protection
- > Anti-penetration resistant
- > EH resistant
- > Heat resistant rubber outsole to 300°C
- > Sizes: UK 3-14 (Half Sizes 7½-10½)



For more technical info, visit www.bataindustrials.com.au to download the data spec sheet.



Bata Industrial's entire range is warrantied for six (6) months from the date of purchase against defective workmanship and/or materials when used under normal conditions for the purpose intended for the particular boot.



Try a pair of Avenger Boots and if you're not completely satisfied with the comfort, simply return the boots to the place of purchase within 30 days of the date of purchase for an exchange or refund.

OUTSOLE TECHNOLOGY



ORTHOLITE® INSOLES
Provides superior cushioning, unmatched comfort, breathability and durability. Also eco-friendly containing 5% recycled rubber.



RECOIL ENERGY RETURN TECHNOLOGY®
Innovative cushioning technology made from super elastic material that is extremely lightweight and durable.



HEAT RESISTANT RUBBER OUTSOLE
Hard wearing rubber outsole provides superior grip and abrasion resistance. Heat resistant to temperatures up to 300°C.



360° ENCAPSULATED RUBBER OUTSOLE
The Recoil ERT midsole is fully encapsulated within a rubber outsole to enhance the longevity of the boot and withstand harsh working conditions.



FUEL & OIL RESISTANT
Is resistant to fuel & oil substances.



SLIP RESISTANT
Tested to meet the Australian standard for slip resistance AS 2210.3:2019 SRC.



ELECTRIC HAZARD PROTECTION
Designed to significantly minimise the flow of electricity to the ground, reducing the possibility of electrocution.



TUNNEL SYSTEM®
The Helix sole design includes an enhanced concave in the heel to increase comfort and reduce strain related injury and fatigue, dissipating heel-strike impact forces.

RECOIL ERT® ENERGY RETURN TECHNOLOGY

BETTER FOR YOUR FEET

The wearer's feet remain less tired, which improves foot health and increases energy levels.

MAXIMUM RESPONSE

Recoil ERT® stays durably elastic and always bounces back into its original shape.

SUPREME EFFICIENCY

Recoil ERT® provides a high level of energy absorption with every step.

MAXIMUM RESISTANCE

Recoil ERT® is encapsulated by a durable rubber outsole layer, making it ideal for the toughest work environments.

ENDLESS CUSHIONING

The outstanding cushioning characteristics of Recoil ERT® help prevent soreness or injury to the wearer's feet, ankles, joints, lower limbs and back.

SUPERIOR BOUNCE

RECOIL ERT® returns a lot more energy and drive to the wearer than the conventional midsole materials used.

Recoil ERT®

Recoil provides more energy return than any other foam cushioning material in the market.

EVA Foam

Even the best performing EVA cushioning returns less energy than Recoil ERT cushioning.

PU

PU cushioning returns even less energy than Recoil ERT cushioning.



RAISING YOUR COMFORT STANDARDS

HELIX ULTRA COLLECTION

Bata Industrials Helix range has evolved, by improving key elements and partnering with highly regarded brands to bring you the best boot in its class. Bata is always striving for innovation and the refined modifications of this new collection is ultra impressive. Now 15% lighter due to its enhanced comfort and durability upgrades it's hard to see why you would wear anything else.

Featuring;



HELIX ULTRA

DUAL DENSITY PU/RUBBER

Standard Certification

AS 2210.3:2019 SRC
ASTM F2413-18 EH Resistant

- Cool Comfort Lining**
Premium comfort lining provides soft and breathable boot interior to keep your feet dry and cool.
- 3M™ Scotchgard™ Protector**
Premium leather uppers with added leather protection from oil and water and also makes cleaning easier.
- Steel Safety Toecap**
Capable of resisting a drop force of 200 Joules to offer premium protection for your toes.
*Longreach Zip features Composite Toecap
- Toe Scuff Protection**
For added toe scuff and abrasion protection to prolong the life of the boot.
- Michelin Rubber Outsole**
Designed to meet the slip, fuel, oil, abrasion & heat resistant to 300°C standard AS 2210.3.
- Life Odour Control Lining**
Natural plant-based antimicrobial protection that eliminates 99% of bacteria that causes bad smell.
- Kevlar Stitching**
Heat and fire retardant stitching that helps prolong the life of the boot.
- PU Comfort Footbed**
For increased cushioning performance.
- BASF Elastopan® Midsole**
Soft cushioned midsole that generates outstanding comfort and is super lightweight.
- D30® Heel Cushion Insert**
Receives a wave of initial impact and displaces the shockwaves and channels the energy to encourage movement.
*Only featured in Horizon & Longreach models
- Armour Layer Anti-Penetration**
Super lightweight non-metal midsole that protects the foot against sharp objects penetrating through the sole.
*Only featured in Longreach Zip models
- Electric Hazard Protection**
Designed to significantly minimise the flow electricity to the ground, reducing the possibility of electrocution.
- High Quality Leather Upper**
High quality leather uppers for added safety and durability

For more technical info, visit www.bataindustrials.com.au to download the data spec sheet.



OUTSOLE TECHNOLOGY

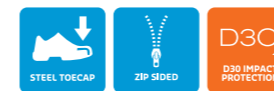
- PREMIUM COMFORT INSOLES**
Each boot is fitted with a premium PU comfort insole to increase underfoot cushioning and support.
- BASF ELASTOPAN PU MIDSOLE**
Lightweight, flexible & soft cushioned PU (Polyurethane) midsole provides superior comfort and a high level of impact absorption.
- MICHELIN RUBBER OUTSOLE**
Hard wearing rubber outsole provides superior grip and abrasion resistance. Heat resistant to temperatures up to 300°C.
- D30 IMPACT PROTECTION**
Advanced technology insert placed within the heel of the midsole to dramatically increase the amount of shock absorption on impact. *Only available in Horizon & Longreach lace models.
- SLIP, FUEL & OIL RESISTANT**
Tested to meet the Australian standard for slip resistance AS 2210.3:2019 FO SRC and is resistant to fuel & oil substances.
- ARMOUR LAYER ANTI-PENETRATION MIDSOLE**
Super lightweight non-metal midsole that protects the foot against sharp objects penetrating through the sole. *Only featured in the wheat & black Longreach Zip models.
- ELECTRIC HAZARD PROTECTION**
Designed to significantly minimise the flow of electricity to the ground, reducing the possibility of electrocution.
- TUNNEL SYSTEM®**
The Helix sole design includes an enhanced concave in the heel to increase comfort and reduce strain related injury and fatigue, dissipating heel-strike impact forces.



HORIZON

Zip Sided Safety Boot

Sizes UK 3-14 (Half Sizes 7½-10½)
Colour Wheat Nubuck Leather 804 88008
Sole PU/Rubber



LONGREACH ZIP

6" Composite Zip Sided Safety Boot

Sizes UK 3-14 (Half Sizes 7½-10½)
Colour Wheat Nubuck Leather 804 88015
Sole PU/Rubber

*Does not include D30 Heel Insert.



LONGREACH ZIP

6" Composite Zip Sided Safety Boot

Sizes UK 3-14 (Half Sizes 7½-10½)
Colour Black Full Grain Leather 804 66029
Sole PU/Rubber

*Does not include D30 Heel Insert.



TREKKER

Claret Slip On Safety Boot

Sizes UK 3-14 (Half Sizes 7½-10½)
Colour Claret Full Grain Safety 804 44021
Sole PU/Rubber

*Does not include D30 Heel Insert.



LONGREACH

6" Lace Up Safety Boot

Sizes UK 3-14 (Half Sizes 7½-10½)
Colour Wheat Nubuck Leather 804 88009
Sole PU/Rubber



LONGREACH

6" Lace Up Safety Boot

Sizes UK 3-14 (Half Sizes 7½-10½)
Colour Black Full Grain Leather 804 66010
Sole PU/Rubber



6 MONTH MANUFACTURERS WARRANTY
Bata Industrial's entire range is warrantied for six (6) months from the date of purchase against defective workmanship and/or materials when used under normal conditions for the purpose intended for the particular boot.



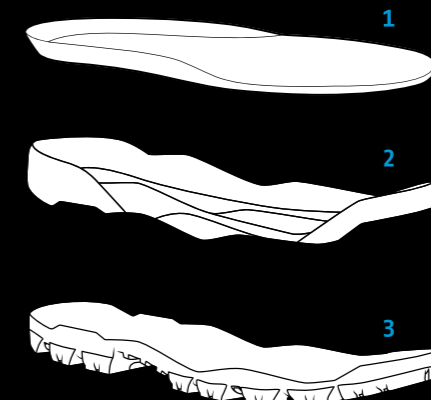
Try a pair of Helix Ultra Boots and if you're not completely satisfied with the comfort, simply return the boots to the place of purchase within 30 days of the date of purchase for an exchange or refund.

COMFORT TECHNOLOGY

The Helix Ultra's comfort system is comprised of three layers: a soft cushioned PU footbed, BASF Elastopan® midsole, and Michelin Rubber outsole. These three layers work together to provide superior energy return, comfort and grip.

3. OUTSOLE MICHELIN RUBBER Improved Grip & Stability

- > Slip, abrasion, heat, fuel & oil resistant
- > Self cleaning tread pattern
- > Heavy duty rubber compound for superior grip
- > Tread pattern was inspired by the Michelin Crossgrip rubber tyre



1. INSOLE SERIOUSLY CUSHIONED

- > PU insole provides all day comfort, cushioning and stability.
- > Breathable and moisture absorbing
- > Arch support
- > Added heel and forefoot shock absorption zones

2. MIDSOLE BASF ELASTOPAN® Lightness & Comfort

- > Lightweight & supportive
- > Ultra high rebound cushioning
- > High flexibility and ergonomic properties
- > Abrasion and hydrolysis resistance
- > Fuel and oil resistant
- > Strong durability & low density

NATURALS

DUAL DENSITY PU/PU

Standard Certification

AS 2210.3:2019 SRA

- High Quality Leather Upper**
High quality leather uppers for added safety and durability
- Life Odour Control Lining**
Natural plant-based antimicrobial protection that eliminates 99% of bacteria that causes bad smell.
- Steel Safety Toecap**
Capable of resisting a drop force of 200 Joules to offer premium protection for your toes.
- PU Comfort Footbed**
For increased cushioning performance.
- Tunnel System**
Concave design in the heel of the outsole that absorbs shock from impact, thus relieving pressure on the joints.
- Antistatic Protection**
Minimises the amount of static electricity build up on your body.
- Durable PU Outsole**
Resistant to fuel, oil, abrasion & heat up to 130°C.

For more technical info, visit www.bataindustrials.com.au to download the data spec sheet.

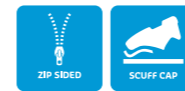


804 88841

ZIPPY

Zip Sided Safety Boot

Sizes UK 2-13 (Half Sizes 6½-10½)
Colour Wheat Nubuck Leather 804 88841
Sole PU/PU



706 80510

TITAN

Lace Up Safety Boot

Sizes UK 3-13 (Half Sizes 6½-10½)
Colour Wheat Nubuck Leather 706 80510
Sole PU/PU



705 60510

SATURN

Lace Up Safety Boot

Sizes UK 2-13 (Half Sizes 6½-10½)
Colour Black Smooth Leather 705 60510
Sole PU/PU



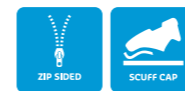
804 66641

ZIPPY

Zip Sided Safety Boot

Sizes UK 2-13 (Half Sizes 6½-10½)
Colour Black Leather 804-66641

Sole PU/PU



703 80514

MERCURY

Slip On Safety Boot

Sizes UK 3-13 (Half Sizes 6½-10½)
Colour Sand Suede Leather 703 80514

Sole PU/PU



805 11514

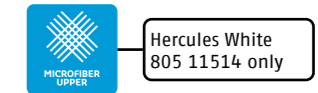
705 60514

HERCULES

Slip On Safety Boot

Sizes Black UK 2-13 (Half Sizes 6½-10½)
White UK 3-13 (Half Sizes 6½-10½)
Colour Black Rambler Leather 705 60514
White Microfibre 805 11514

Sole PU/PU



6 MONTH MANUFACTURERS WARRANTY
Bata Industrial's entire range is warrantied for six (6) months from the date of purchase against defective workmanship and/or materials when used under normal conditions for the purpose intended for the particular boot.



OUTSOLE TECHNOLOGY

- COMFORT FOOTBED**
PU COMFORT INSOLE
The Naturals polyurethane footbed provides superior softness, shock absorption and arch support for increased underfoot cushioning performance.
- FLEXIBLE MIDSOLE**
SOFT CUSHIONED PU MIDSOLE
Lightweight, flexible & soft cushioned PU (Polyurethane) midsole provides superior comfort and a high level of impact absorption.
- HEAT RESISTANT PU OUTSOLE**
DURABLE HEAT RESISTANT PU OUTSOLE
Durable PU (Polyurethane) outsole that is resistant to oil, acid, abrasion & heat up to 130°C.
- ANTISTATIC**
ANTISTATIC
Designed to minimise the amount of static electricity build up on your body.
- FUEL & OIL RESISTANT**
FUEL & OIL RESISTANT
Is resistant to fuel & oil substances.
- SLIP RESISTANT**
SLIP RESISTANT
Tested to meet the Australian standard for slip resistance AS 2210.3:2019 SRA.
- TUNNEL SYSTEM**
TUNNEL SYSTEM®
The naturals sole design includes an enhanced concave in the heel to increase comfort and reduce strain related injury and fatigue, dissipating heel-strike impact forces.



Anti-static Protection

The naturals boots are conductive safety workboots. This means they are designed to prevent a build-up of static electrical charges in the human body by sending these charges to the ground, preventing a sudden flow of electricity between electrically charged objects caused by contact.



Tunnel System®

Bata Industrials Naturals collection has evolved, featuring an updated sole design and premium styling. The new sole design includes an enhanced tunnel system to increase comfort and reduce strain-related injury and fatigue. The tunnel system is a lightweight concave heel cushioning system that dissipates heel-strike impact forces.



Life Natural Odour Control Lining

Life Natural is green technology that uses the bacteria-fighting power of plants to control perspiration odours. It replaces current odour control chemicals with natural peppermint oil while offering the same performance and durability. It eliminates 99% of bad odour causing bacteria giving 100% long lasting natural anti-microbial protection and freshness.



Food Grade Safety Boot

The Hercules white elastic sided boot has been designed for the food industry. Its water-resistant microfibre upper easily wipes clean, breathable lining keeps your feet dry and comfortable and it has excellent slip resistance underfoot. A Dual density polyurethane sole resists oils, fats, acids and grease, and added toe protection with a steel toe cap that is capable to resist up to 200 joules of force.

NATURALS RUBBER

DUAL DENSITY PU/RUBBER

Standard Certification

AS 2210.3:2019 SRC
ASTM F2413-18 EH Resistant

- High Quality Leather Upper**
High quality leather uppers for added safety and durability
- Life Odour Control Lining**
Natural plant-based antimicrobial protection that eliminates 99% of bacteria that causes bad smell.
- Zip Sided**
Allows you to quickly slip in and out of your boots without having to stop and use the laces.
- PU Comfort Footbed**
Designed to reduce foot fatigue & increase underfoot comfort & support.
- Steel Safety Toecap**
Capable of resisting a drop force of 200 Joules to offer premium protection for your toes.
- Toe Scuff Protection**
For added toe scuff and abrasion protection to prolong the life of the boot.
- Tunnel System**
Concave design in the heel of the outsole that absorbs shock from impact, thus relieving pressure on the joints.
- Electric Hazard Protection**
Designed to significantly minimise the flow electricity to the ground, reducing the possibility of electrocution.
- Durable Rubber Outsole**
Designed to meet the slip, fuel, oil, abrasion & heat resistant to 300°C standard AS 2210.3.

For more technical info, visit www.bataindustrials.com.au to download the data spec sheet.



DEFENDER ZIP 804 80851 Wheat Zip Sided Safety Boot

- > Steel safety toe
- > Wheat nubuck leather upper
- > External TPU scuff toe cap
- > YKK zip side for ease of access
- > EH resistant
- > Heat resistant rubber outsole to 300°C
- > Sizes: UK 5-13 (Half Sizes 6½-10½)

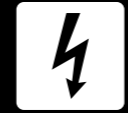


6 MONTH MANUFACTURERS WARRANTY
Bata Industrial's entire range is warrantied for six (6) months from the date of purchase against defective workmanship and/or materials when used under normal conditions for the purpose intended for the particular boot.



OUTSOLE TECHNOLOGY

- PU COMFORT INSOLE**
The Naturals polyurethane footbed provides superior softness, shock absorption and arch support for increased underfoot cushioning performance.
- FUEL & OIL RESISTANT**
Is resistant to fuel & oil substances.
- SOFT CUSHIONED PU MIDSOLE**
Lightweight, flexible & soft cushioned PU (Polyurethane) midsole provides superior comfort and a high level of impact absorption.
- SLIP RESISTANT**
Tested to meet the Australian standard for slip resistance AS 2210.3:2019 SRC.
- HEAT RESISTANT RUBBER OUTSOLE**
Hard wearing rubber outsole provides superior grip and abrasion resistance. Heat resistant to temperatures up to 300°C.
- TUNNEL SYSTEM®**
The naturals sole design includes an enhanced concave in the heel to increase comfort and reduce strain related injury and fatigue, dissipating heel-strike impact forces.
- ELECTRIC HAZARD PROTECTION**
Designed to significantly minimise the flow of electricity to the ground, reducing the possibility of electrocution.



Electical Hazard Protection
The entire surface of Electrical hazard (EH) rated safety boots are made from non-conductive materials and as a result no electrical charge will pass through the body, because you are fully isolated from the ground. So this provides a secondary source of protection for you from electric shocks or electrocution.



Tunnel System®
Bata Industrials Naturals collection has evolved, featuring an updated sole design and premium styling. The new sole design includes an enhanced tunnel system to increase comfort and reduce strain-related injury and fatigue. The tunnel system is a lightweight concave heel cushioning system that dissipates heel-strike impact forces.



Life Natural Odour Control Lining
Life Natural is green technology that uses the bacteria-fighting power of plants to control perspiration odours. It replaces current odour control chemicals with natural peppermint oil while offering the same performance and durability. It eliminates 99% of bad odour causing bacteria giving 100% long lasting natural anti-microbial protection and freshness.

LADIES

DUAL DENSITY PU/RUBBER

Standard Certification

AS 2210.3:2019 SRC
ASTM F2413-18 EH Resistant

- High Quality Leather Upper**
High quality nubuck leather uppers for added safety and durability.
- Life Odour Control Lining**
Natural plant-based antimicrobial protection that eliminates 99% of bacteria that causes bad smell.
- Zip Sided**
Allows you to quickly slip in and out of your boots without having to stop and use the laces.
- PU Comfort Footbed**
Designed to reduce foot fatigue & increase underfoot comfort & support.
- Steel Safety Toecap**
Capable of resisting a drop force of 200 Joules to offer premium protection for your toes.
- Toe Scuff Protection**
For added toe scuff and abrasion protection to prolong the life of the boot.
- D30® Heel Cushion Insert**
Receives a wave of initial impact and displaces the shockwaves and channels the energy to encourage movement.
- Electric Hazard Protection**
Designed to significantly minimise the flow electricity to the ground, reducing the possibility of electrocution.
- Durable Rubber Outsole**
Designed to meet the slip, fuel, oil, abrasion & heat resistant to 300°C standard AS 2210.3.

For more technical info, visit www.bataindustrials.com.au to download the data spec sheet.



DAKOTA 504 88017 Wheat Zip Sided Safety Boot

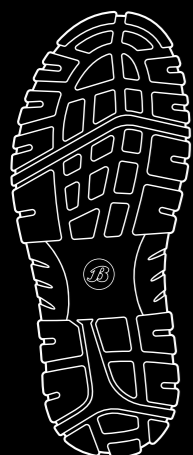
- > Steel safety toe
- > Wheat nubuck leather upper
- > External TPU scuff toe cap
- > Zip side for ease of access
- > EH resistant
- > Heat resistant rubber outsole to 300°C
- > Sizes: 5-11 (Ladies)



Bata Industrial's entire range is warrantied for six (6) months from the date of purchase against defective workmanship and/or materials when used under normal conditions for the purpose intended for the particular boot.



Try a pair of Dakota Boots and if you're not completely satisfied with the comfort, simply return the boots to the place of purchase within 30 days of the date of purchase for an exchange or refund.



OUTSOLE TECHNOLOGY

- COMFORT FOOTBED**
PU COMFORT INSOLE
The Ladies polyurethane footbed provides superior softness, shock absorption and arch support for increased underfoot cushioning performance.
- FLEXIBLE MIDSOLE**
SOFT CUSHIONED PU MIDSOLE
Lightweight, flexible & soft cushioned PU (Polyurethane) midsole provides superior comfort and a high level of impact absorption.
- HEAT RESISTANT RUBBER OUTSOLE**
Hard wearing rubber outsole provides superior grip and abrasion resistance. Heat resistant to temperatures up to 300°C.
- D30® IMPACT PROTECTION**
Advanced technology insert placed within the heel of the midsole to dramatically increase the amount of shock absorption on impact.
- FUEL & OIL RESISTANT**
Is resistant to fuel & oil substances.
- SLIP RESISTANT**
Tested to meet the Australian standard for slip resistance AS 2210.3:2019 SRC.
- ELECTRIC HAZARD PROTECTION**
Designed to significantly minimise the flow of electricity to the ground, reducing the possibility of electrocution.
- TUNNEL SYSTEM®**
The Ladies sole design includes an enhanced concave in the heel to increase comfort and reduce strain related injury and fatigue, dissipating heel-strike impact forces.



Electical Hazard Protection

The entire surface of Electrical hazard (EH) rated safety boots are made from non-conductive materials and as a result no electrical charge will pass through the body, because you are fully isolated from the ground. So this provides a secondary source of protection for you from electric shocks or electrocution.



D30® Impact Protection

Bata Industrials Helix range is protected by D30® and nothing protects better. D30® material offers the most advanced protection against impact. It protects the heel by providing long term cushioning and shock resistance reducing foot, leg and lower back fatigue. This means that the harder the impact, the greater the protection to the force.



Life Natural Odour Control Lining

Life Natural is green technology that uses the bacteria-fighting power of plants to control perspiration odours. It replaces current odour control chemicals with natural peppermint oil while offering the same performance and durability. It eliminates 99% of bad odour causing bacteria giving 100% long lasting natural anti-microbial protection and freshness.

EMERGENCY SERVICES

DUAL DENSITY PU/RUBBER

Standard Certification

AS 2210.3:2019 OB E FO AN WRU SRC CI(sole) HI(sole)
 HRO-350° Outsole HRO-120° Midsole
 ASTM F2413-18 EH Resistant
 Abrasion Resistant-Satra TM 163:1996

- Water Resistant Upper**
Resistant to water penetrating the inside of the boot.
- D30° Ankle Protection**
Provides a protective barrier to protect the ankle area from high impact.
- High Quality Leather Upper**
Full grain leather upper for added safety and durability.
- Durable Rubber Outsole**
Designed to meet the slip, fuel, oil, abrasion & heat resistant to 350°C standard AS 2210.3.
- Dri-Freeze Lining**
A performance fabric designed to manage the moisture and breathability within the boot environment, keeping the foot surface cool, dry and comfortable.
- Zip Sided**
Allows you to quickly slip in and out of your boots without having to stop and use the laces.
- Ortholite® Insole**
Provides superior cushioning, unmatched comfort, breathability and durability.
- Energy Absorption Midsole**
Lightweight, flexible & high rebound PU midsole provides superior comfort and impact absorption.
- Electric Hazard Protection**
Designed to significantly minimise the flow electricity to the ground, reducing the possibility of electrocution.



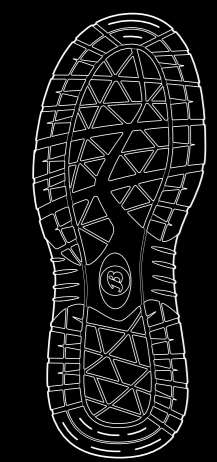
SENTINEL 804 60416 Black Zip Sided Response Boot

- > Black full grain leather/canvas upper
- > D30° ankle impact protection
- > YKK zip side for ease of access
- > Ortholite® Insole
- > EH resistant
- > Heat resistant rubber outsole to 350°C
- > Sizes: UK 3-14 (Half Sizes 6½-9½)



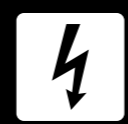
For more technical info, visit www.bataindustrials.com.au to download the data spec sheet.

6 MONTH MANUFACTURERS WARRANTY
 Bata Industrial's entire range is warrantied for six (6) months from the date of purchase against defective workmanship and/or materials when used under normal conditions for the purpose intended for the particular boot.



OUTSOLE TECHNOLOGY

- ORTHOLITE® INSOLES**
Provides superior cushioning, unmatched comfort, breathability and durability. Also eco-friendly containing 5% recycled rubber.
- ENERGY ABSORPTION PU MIDSOLE**
Lightweight, flexible, soft cushioned & high rebound PU (Polyurethane) midsole provides superior comfort and a high level of impact absorption.
- HEAT RESISTANT RUBBER OUTSOLE**
Hard wearing rubber outsole provides superior grip and abrasion resistance. Heat resistant to temperatures up to 350°C.
- ELECTRIC HAZARD PROTECTION**
Designed to significantly minimise the flow of electricity to the ground, reducing the possibility of electrocution.
- FUEL & OIL RESISTANT**
Is resistant to fuel & oil substances.
- SLIP RESISTANT**
Tested to meet the Australian standard for slip resistance AS 2210.3:2019 SRC.



Electical Hazard Protection
 The entire surface of Electrical hazard (EH) rated safety boots are made from non-conductive materials and as a result no electrical charge will pass through the body, because you are fully isolated from the ground. So this provides a secondary source of protection for you from electric shocks or electrocution.



D30° Impact Protection
 Nothing protects better than D30°. D30° material offers the most advanced protection against impact. It protects the heel by providing long term cushioning and shock resistance reducing foot, leg and lower back fatigue. This means that the harder the impact, the greater the protection to the force.



Ortholite® Insole
 With extraordinarily low resiliency and high density, ortholite® foam deadens impact forces before they're transferred to the body. It's unrivaled energy absorption makes it the perfect choice where comfort is priority and stability is essential. Ortholite® foam insoles deliver superior confidence and under-foot protection, enhancing safety while reducing fatigue.

SPORTSMATES

DUAL DENSITY EVA/RUBBER

Standard Certification

AS 2210.3:2019 SB E FO SRC



For more technical info, visit www.bataindustrials.com.au to download the data spec sheet.

CHARGER 801 66017

Black Lace Up Safety Jogger

- > Safety toecap
- > Abrasion resistant mesh upper
- > Lightweight EVA cushioned midsole
- > Shock absorbing heel disc insert
- > PU foam footbed
- > Slip resistant rubber outsole
- > Sizes: UK 3-13 (Full Sizes Only)



STRIKER 801 66018

Black Lace Up Safety Jogger

- > Safety toecap
- > Abrasion resistant mesh upper
- > Lightweight EVA cushioned midsole
- > Shock absorbing heel disc insert
- > PU foam footbed
- > Slip resistant rubber outsole
- > Sizes: UK 3-13 (Full Sizes Only)



Bata Industrial's entire range is warrantied for six (6) months from the date of purchase against defective workmanship and/or materials when used under normal conditions for the purpose intended for the particular boot.

OUTSOLE TECHNOLOGY



PU FOAM INSOLES
Breathable PU foam moulded footbed provide soft cushioning for everyday use.



EVA CUSHIONED MIDSOLE
Soft cushioned midsole that generates outstanding comfort and is super lightweight.



DURABLE RUBBER OUTSOLE
Durable rubber outsole that is resistant to oil, fuel, abrasion & Slippery surfaces.



FUEL & OIL RESISTANT
Is resistant to fuel & oil substances.

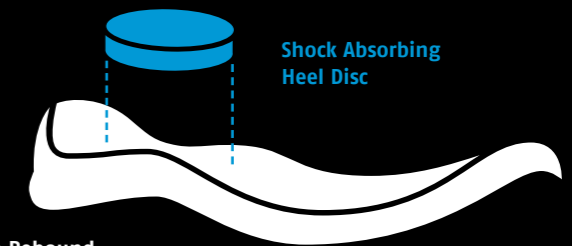


SLIP RESISTANT
Tested to meet the Australian standard for slip resistance AS 2210.3:2019 SRC.

COMFORT TECHNOLOGY

The new sportmates collection features a high rebound energy cushioned midsole made from an EVA compound that is super flexible & lightweight.

Fused within the heel of the midsole is a shock absorbing heel disc which generates stable cushioning across the heel, thus effectively reducing the impact of movement and providing a higher level of comfort. By combining the two materials together the sportmates range can help reduce impact strain to the lower leg, back, ankle, knee and hip joints.



High Rebound Cushioning Midsole

Shock Absorbing Heel Disc

MATES

DUAL DENSITY PU/PU

Standard Certification

AS 2210.3:2019

High Quality Leather Upper
High quality leather uppers for added safety and durability



Steel Safety Toecap
Capable of resisting a drop force of 200 Joules to offer premium protection for your toes.



Comfort Footbed
For increased cushioning performance.



Tunnel System
Concave design in the heel of the outsole that absorbs shock from impact, thus relieving pressure on the joints.



Durable PU Outsole
Resistant to oil, acid, abrasion & heat up to 130°C.



JOBMATE 805 00605
Black Slip On Safety Boot

- > Steel safety toe
- > Black rambler leather upper
- > Heavy Duty Woven pull tabs
- > Dual density PU/PU outsole
- > Heat resistant outsole to 130°C
- > Sizes: UK 5-13 (Full Sizes Only)



BUSHMAN 805 44405
Claret Slip On Non-Safety Boot

- > Non safety
- > Claret Full grain leather upper
- > Heavy Duty Woven pull tabs
- > Dual density PU/PU outsole
- > Heat resistant outsole to 130°C
- > Sizes: UK 4-12 (Half sizes 7½-10½)



For more technical info, visit www.bataindustrials.com.au to download the data spec sheet.



Bata Industrial's entire range is warrantied for six (6) months from the date of purchase against defective workmanship and/or materials when used under normal conditions for the purpose intended for the particular boot.

OUTSOLE TECHNOLOGY



PU COMFORT INSOLE
Molded PU footbed provides superior softness, shock absorption and arch support for increased underfoot cushioning performance.



FLEXIBLE PU MIDSOLE
Lightweight, flexible & soft cushioned PU (Polyurethane) midsole which provides superior comfort and a high level of impact absorption.



DURABLE HEAT RESISTANT PU OUTSOLE
Durable PU (Polyurethane) outsole that is resistant to oil, acid, abrasion & heat up to 130°C.



FUEL & OIL RESISTANT
Is resistant to oil & acid substances.



SLIP RESISTANT
Tested to meet the Australian standard for slip resistance AS 2210.3:2019 SRA.



TUNNEL SYSTEM®
The sole design includes an enhanced concave in the heel to increase comfort and reduce strain related injury and fatigue, dissipating heel-strike impact forces.



Dual Density Sole

This boot features a dual density polyurethane sole providing a combination of lightweight cushioning within the midsole and a durable abrasion resistance tread.



Tunnel System®

Bata Industrials Mates sole design includes an enhanced tunnel system to increase comfort and reduce strain-related injury and fatigue. The tunnel system is a lightweight concave heel cushioning system that dissipates heel-strike impact forces.



Steel Safety Toecap

The Jobmate is fitted with a certified steel toe cap capable of resisting a drop force of 200 joules to offer premium protection for your toes.



AUSTRALIAN MADE PVC GUMBOOTS

Bata gumboots are proudly manufactured at our Mornington, Victoria factory and have been worn by Australians for decades. Whether for general use in the yard or garden or simply when it's wet and wild outside, Bata gumboots will keep you dry, safe and comfortable.

Bata Utility gumboots are synonymous with Australian industry and are widely used across a variety of applications. The Utility design is a favourite in the workplace. It is reinforced at the heel, ankle and shin and is both durable and flexible. Channelling in the sole allows for improved liquid dispersal and slip resistance.

Our Jobmaster II gumboots are used widely throughout food processing and associated industries. With a specification well suited to fisheries, meat and poultry processing. Jobmaster II gumboots are made from PVC that has been specifically formulated for the correct work application. Fully lined with reinforced uppers and a slip resistant sole design Jobmaster II gumboots provide great comfort for the longest of shifts.

With a revolutionary new sole design that is durable and fuel & oil resistant Jobmaster III provides surety under foot and excellent multi directional slip resistance. Comfortable for the longest shifts, Jobmaster III is destined to become a firm favourite across Australian industry, just like its hard working and hard wearing predecessors.



Recommended for use in the following industries;



100% RECYCLABLE

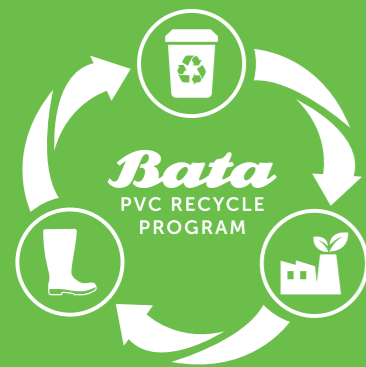
BOOT	ARTICLE NO.	INDUSTRY							
INDUSTRY SUITABLE FOR									
SAFETY GUMBOOTS									
Utility Black/Blue	892 69092	•	•	•	•	•	•	•	•
Utility Black/Red	892 65190		•	•		•	•	•	•
Utility White	892 11090	•			•		•	•	
Safemate Black/Yellow	892 62390	•			•		•	•	
Jobmaster II Green/Orange	892 75192	•							
Jobmaster II White/Gum	892 10095	•			•		•	•	•
Jobmaster II Green/Gum	892 73095	•							•
Jobmaster III Grey/Grey	892 22292	•	•	•			•		
Jobmaster III Black/Grey	892 62290	•	•	•			•		•
NON SAFETY GUMBOOTS									
Jobmaster II White/Gum	892 13180	•			•		•	•	•
Jobmaster II Green/Gum	892 73180				•		•	•	•
Jobmaster III Black/Green	892 67280	•	•				•		•
Utility Black	892 66380		•						•
Utility Green	892 77080	•			•		•	•	
Utility White	892 11080	•			•		•	•	
Handyman 400mm	892 60079	•	•				•	•	
Handyman 300mm	892 60069	•	•				•	•	

For more technical info, visit www.bataindustrials.com.au to download the data spec sheet.

TAKE A STEP TO REDUCING YOUR CARBON FOOTPRINT

Each year, Australia produces more than 53.7 million tonnes of rubbish of which 22 million tonnes reach landfills. Each Australian produces an average 2.1kg of waste every day, which is the second highest in the world.

So thanks to our consumerist habits we are generating more waste than we can get rid of in an environmentally correct way. That is why Bata Australia has made a conscious effort to reduce waste generation through recycling and reusing PVC content in our gumboot production process. So by using recycled content not only do we reduce the amount of waste reaching landfill but we are also helping to reduce our carbon footprint.



WHAT IS THE PVC RECYCLE PROGRAM?

The PVC Recycle program is an initiative of the Bata Shoe Company of Australia to help reduce the amount of worn PVC gumboots being disposed of into landfill. Bata's aim is to re-process this waste into the raw materials to create brand new Bata PVC gumboots and help save the planet. Our main objective is to have zero used/worn PVC gumboots being disposed into landfill and to help our customers responsibly dispose of their used boots we are working to setup easy to use recycle disposal bins nation wide in collaboration with our current distributors.

At Bata we see the value in offering competitive production whilst still taking into consideration the materials we use.

That's why we've opted for a circular economy. A circular economy is an alternative to a traditional linear economy (make, use, dispose) in which we keep resources in use for as long as possible, extract the maximum value from them whilst in use, then recover and regenerate products and materials at the end of each service life.



SUSTAINABLE PRODUCT MANUFACTURING

In 2022 Approx 200,000 pairs will be made from 50% recycled PVC content.



REDUCING CARBON EMISSIONS

For each kilo of recycled PVC 2 kilos of CO₂ emissions has been saved.



2021 AWARD WINNER

Product Stewardship Centre of Excellence



WHY SHOULD YOU RECYCLE YOUR PVC GUMBOOTS?

With the PVC Gumboot Recycling program, individuals and companies can also contribute to the health of our environment. Recycling PVC is quite easy, with a number of businesses across Australia and New Zealand already participating. Recycling PVC can also be cheaper than disposing directly to regular waste. Recycling PVC instead of putting it into waste bins can lead to positive environmental outcomes and may reduce the costs of waste management.



5 STAGES OF PVC RECYCLING

In order for PVC waste to be recycled, it needs to go through five different stages so that it can become used in the reproduction of PVC Gumboots.



Collection

Bata will place a collection bin on your premises. Once this bin has been filled it will be sent to the recycling centre to be processed.



Sorting

The gumboots are then sorted and non PVC materials are separated from the boot. This is necessary so that the PVC can be processed accordingly in further stages.



Granulated

The boots are then processed through a granulating machine that shreds the PVC into small pellets.



Processing

The PVC pellets are then reprocessed with an added plasticizer to create a new compound that is approximately made of 50% or more of recycled content.



Re-Manufacture

Bata then uses the recycled PVC material in its injection moulding machines to produce brand new black gumboots ready for use.

SAFETY GUMBOOTS



892 11090

892 65190

892 69092



892 62390



892 10095

892 73095

UTILITY

400mmH PVC Safety Gumboot

Sizes UK 5-12
Colour Black/Blue 892 69092
Black/Red 892 65190 (Size 13 avail)
White/White 892 11090

Sole PVC



Black/Blue 892 69092 only

SAFEMATE

400mmH PVC Safety Gumboot

Sizes UK 15 (Only in size 15)
Colour Black/Yellow 892 62390

Sole PVC



JOBMASTER II

400mmH PVC Safety Gumboot

Sizes UK 4-14
Colour Green/Gum 400mm 892 73095
White/Gum 400mm 892 10095

Sole PVC



892 22292



892 62290



892 75192

JOBMASTER III

400mmH PVC Safety Gumboot

Sizes UK 4-14
Colour Grey/Grey 892 22292

Sole PVC



JOBMASTER III

400mmH PVC Safety Gumboot

Sizes UK 4-14
Colour Black/Grey 400mm 892 62290

Sole PVC



JOBMASTER II

400mmH PVC Safety Gumboot

Sizes UK 4-14
Colour Green/Orange 892 75192

Sole PVC



NON SAFETY GUMBOOTS

GUMBOOT COMMON FEATURES



WATER RESISTANT
Resistant to water penetrating the inside of the gumboot.



FUEL & OIL RESISTANT UPPER
Upper is resistant to fuel & oil substances.



SLIP RESISTANT
Tested & certified to meet the Australian standard for slip resistance.



892 13180

JOBMASTER II 400mm

400mmH PVC Gumboot

Sizes UK 4-14
Colour White/Gum 892 13180
Sole PVC



892 73180

JOBMASTER II 400mm

400mmH PVC Gumboot

Sizes UK 4-14
Colour Green/Gum 892 73180
Sole PVC



892 67280

JOBMASTER III

300/400mmH PVC Gumboot

Sizes UK 4-15
Colour Black/Green 400mm 892 67280
Sole PVC



892 66380

UTILITY

400mmH PVC Gumboot

Sizes UK 5-12
Colour Black/Black 892 66380 (Size 13 Avail)
White/White 892 11080

Sole PVC



892 60079

892 60069

HANDYMAN

300/400mmH PVC Gumboot

Sizes UK 5-13
Colour Black/Black 400mm 892 60079
Black/Black 300mm 892 60069

Sole PVC



BLOOM

Our new Bloom foam insoles are made from a sustainable algae-based material that helps to remove harmful algae and reverse the effects of water pollution and rising global temperatures by restoring healthy ecosystems and generating clean water.

The Bloom insole provides a sustainable alternative to non-renewable petroleum-based foams. So with one insole, we are cleaning 7 litres of water and 4 cubic metres of air.



For more technical info, visit www.bataindustrials.com.au to download the data spec sheet.

ACCESSORIES



890 20000



890 40000



890 80000

COMFORT INSOLES

Air Cushioned EVA Insoles

Sizes UK 3-5, 6-8, 9-11, 12-14
Colour White 890 20000
Sole EVA

SERIOUSLY CUSHIONED INSOLES

Shock Absorption PU Insoles

Sizes UK 3-5, 6-8, 9-11, 12-14
Article 890 40000
Sole PU

Designed for enhanced cushioning, these PU insoles are soft, breathable, washable and shock absorbent.

SERIOUSLY SUPPORTIVE INSOLES

Supportive Insoles

Sizes UK 3-5, 6-8, 9-11, 12-14
Article 890 80000
Sole PU

Give your feet some extra support with these PU insoles, designed to keep you feet in alignment as they fatigue during the day.



890 91000



890 92000

WORK SOCKS 3 PACK

Multicolour Crew Sock

Sizes Medium UK 3-9, Large UK 10-14
Colour Bright Colour Pack 890 91000
Fabric Cotton/Polyester/Elastane/Nylon

WORK SOCKS 3 PACK

Multicolour Crew Sock

Sizes Medium UK 3-9, Large UK 10-14
Colour Dark Colour Pack 890 92000
Fabric Cotton/Polyester/Elastane/Nylon



890 50003

890 90001

890 20002

SOCK PROTECTORS

Overboot Sock Protectors

Sizes One size fits all
Colour Orange Hi-Vis 890 50003
 Navy 890 90001
 Khaki 890 20002
Fabric Polyester/Cotton

WORKBOOT LACES PAIR

Replacement Laces

Sizes Small 130cm, Large 160cm
Colour Wheat 890 82502
 Black 892 62502
Spec Ultimate Tensile Strength of 921N.



130cm Length suitable for midcut boots (5 eyelets)

160cm Length suitable for highcut boots (6 eyelets)

30 DAY
COMFORT
GUARANTEE

Purchase any pair of **Bata Industrials** boots from the **Avenger, Helix Ultra** or **Ladies** range and if you're not completely satisfied with the comfort, simply return the boots to the place of purchase within 30 days of the date of purchase for an exchange or refund.

To make a claim under this guarantee, you must return the purchased footwear at your own cost to the place of purchase. Along with your original receipt within 30 days from the date of purchase. Provided the footwear is not damaged or misused you may choose between a full refund or an exchange up to the original purchase price of the footwear as set out on the purchase receipt.

6 MONTH
MANUFACTURERS
WARRANTY

Bata Industrial's entire range is warrantied for six (6) months from the date of purchase against defective workmanship and/or materials when used under normal conditions for the purpose intended for the particular boot.

The warranty will become void by the discretion of Bata Industrials if the product has been misused or subjected to excessive wear and tear including exposure to chemicals, cement, lime or heat if the footwear has not been designed for these environments.

To claim the purchaser must return the footwear and provide proof of purchase to the place of purchase. The footwear will then be returned to Bata Industrials for inspection. If found defective the footwear will either be repaired and returned where possible, otherwise a replacement pair will be provided by Bata Industrials.



RANGE INDEX

ZIP SIDED BOOTS



LACE UP BOOTS



TITAN WHEAT
706 80510
Pg 17



CHARGER
801 66017
Pg 25



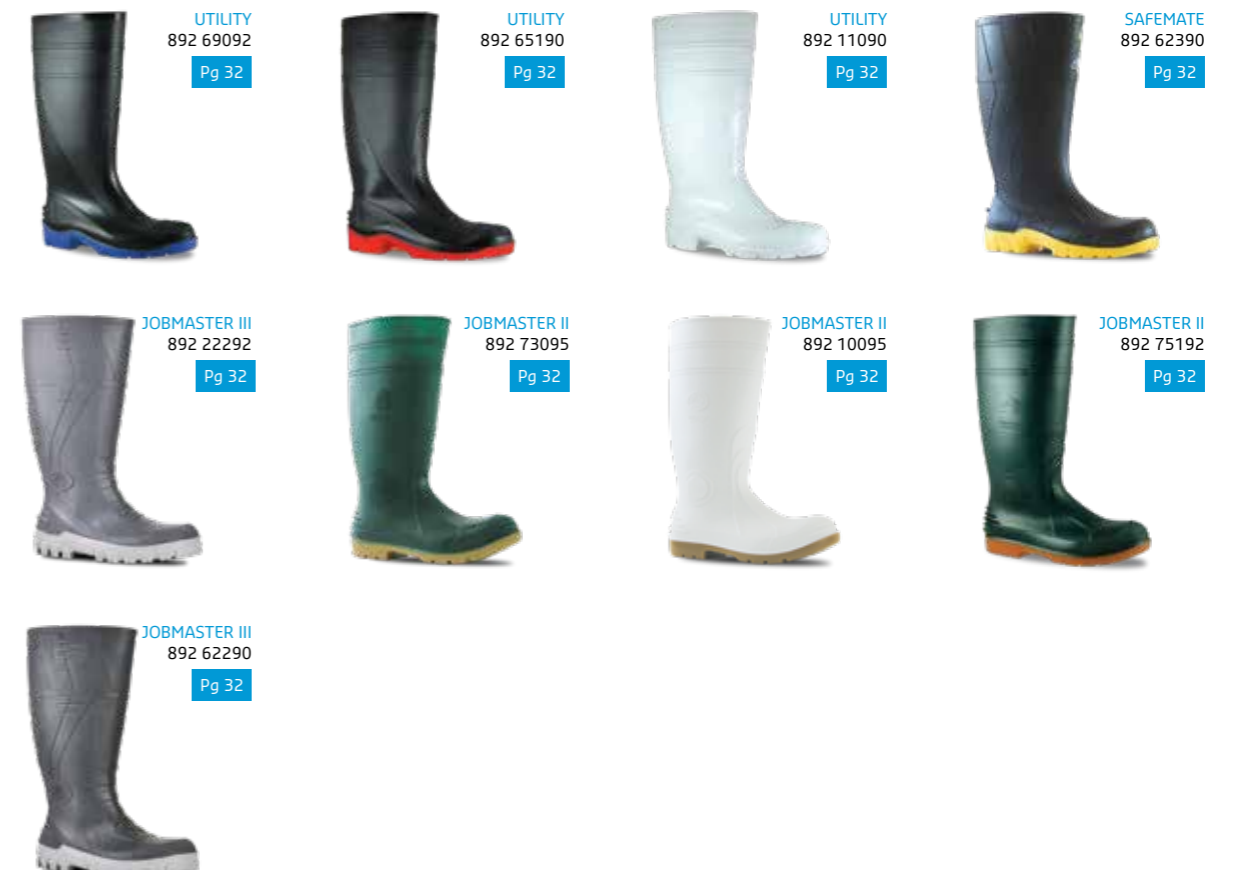
STRIKER
801 66018
Pg 25

SAFETY JOGGER

ELASTIC SIDED BOOTS



PVC SAFETY GUMBOOTS



PVC NON SAFETY GUMBOOTS



INDUSTRIAL SIZING CHART

MENS UK/AUS SIZE	2	3	4	5	6	6½	7	7½	8	8½	9	9½	10	10½	11	12	13	14	15
MENS US SIZE	2	3	4	5	6	7	7½	7½	8	8½	9	10	11	11½	12	13	14	15	16
EUROPEAN SIZE	35	36	37	38	39	40	41	41	42	42	43	44	45	45	46	47	48	49	50
WOMENS UK/AUS SIZE	4	5	6	7	8	8½	9	9½	10	10½	11	11½	12	12½	13	14	15	16	17

Bata Industrials half sizes are the same length as full sizes but offer a wider fit for a broader foot.

FIND YOUR BOOT

BOOT	PAGE	PROTECTION FEATURES	SOLE	UPPER FEATURES
------	------	---------------------	------	----------------



AVENGER COLLECTION				
Avenger	11			
HELIX COLLECTION				
Horizon	15			
Longreach Zip	15			
Longreach	15			
Trekker	15			
NATURALS COLLECTION				
Zippy	17			
Titan	17			
Saturn	17			
Mercury	17			
Hercules Black	17			
Hercules White	17			
Defender Zip	19			
LADIES COLLECTION				
Dakota	21			
EMERGENCY SERVICES COLLECTION				
Sentinel	23			
SPORTMATES COLLECTION				
Charger	25			
Striker	25			
MATES COLLECTION				
Jobmate	27			
Bushman	27			
PVC SAFETY GUMBOOT COLLECTION				
Utility 89211090	32			
Utility 89265190	32			
Utility 89269092	32			
Safemate	32			
Jobmaster 2	32			
Jobmaster 3	32			
Jobmaster 3 89222292	32			
PVC NON-SAFETY GUMBOOT COLLECTION				
Utility	33			
Jobmaster 2	33			
Jobmaster 3	33			
Handyman	33			

THE SAFETY STANDARD

If a boot carries a safety standard label, this indicates the following; the product meets the requirements of Australian Regulation regarding personal protective equipment. The safety standard AS 2210 consists of two parts, The basis label means that a product meets a number of basic requirements. If the product also meets certain additional requirements, this is indicated by a symbol on the boot.

EXPLANATION OF THE SYMBOLS

- SB** Protective footwear for professional use with toecaps designed to give protection against impact when tested at an energy level of 200 joules
- S1** As SB plus antistatic properties, energy absorption of seat region, closed heel and resistance to fuel oil
- S1P** As S1 plus anti penetration resistant insert
- S2** As S1 plus water resistance and water absorption of upper material
- S3** As S2 plus anti penetration resistant insert and cleated outsole
- S4** All-rubber or all-polymer footwear, antistatic properties, energy absorption of seat region, protective toecap, closed heel and resistance to fuel oil
- S5** As S4 plus anti penetration resistant insert and cleated outsole

Additional requirements for special applications with specific marks:

P Penetration resistance	HI Insulation against heat	HRO Heat Resistant Outsole
C Conductive	CI Insulation against cold	SBH Hybrid footwear
A Antistatic	CR Cut resistant footwear	ESD Electrostatic discharge
E Energy absorption	AN Ankle protection	SRA/ Slip resistance
I Insulating footwear	WR Water resistant footwear	SRB/SRC
M Metatarsal protection 100 J impact energy	WRU Water resistant upper	
	FRU Flame resistant upper	

CAREFULLY READ THESE INSTRUCTIONS BEFORE USING THIS PRODUCT: This footwear is designed to minimize the risk of injury from the specific hazards as identified by the marking on the particular product (see marking codes above). However, always remember that no item of PPE can provide full protection and care must always be taken while carrying out the risk-related activity.

PERFORMANCE AND LIMITATIONS OF USE – These products have been tested in accordance with AS 2210.3:2019 for the types of protection defined on the product by the marking codes explained above. However, always ensure that the footwear is suitable for the intended end use.

FITTING, SIZING – To put on and take off shoes or boots, always fully undo the fastening systems. Only wear footwear of a suitable size. Shoes that are either too loose or too tight will restrict movement and will not provide the optimum level of protection. The shoe size is always clearly marked on our shoes.

COMPATIBILITY – To optimize protection, in some instances it may be necessary to use this footwear with additional PPE such as protective trousers or over gaiters. In this case, before carrying out the risk related activity, consult your supplier to ensure that all your protective products are compatible and suitable for your application.

SOCKS & COMFORT – Wear Bata Industrials socks, change your socks regularly and, in case of perspiration, take alternating hot and cold baths. Use soap sparingly. Change shoes regularly: leather is a natural product and should be allowed to rest.

Check www.bataindustrials.com.au to contact our shoe advisor or to view all the standards that apply on each of our shoes. Risk analysis is always the responsibility of the prevention advisor. The prevention advisor, in consultation with the hierarchal line, prepares the advice whereby the employer undertakes the necessary actions.



BATA INDUSTRIALS FOOTWEAR

1158 Nepean Hwy • Mornington
Victoria • 3931 • Australia

Toll Free: **1800 644 297**

Fax: **(03) 5976 2279**

Email: **au.customer.service@batashoes.net**

www.bataindustrials.com.au

 [Facebook.com/BataIndustrialsAustralia](https://www.facebook.com/BataIndustrialsAustralia)

 [instagram.com/BataIndustrialsAustralia](https://www.instagram.com/BataIndustrialsAustralia)