




Performances

	Capacity	12,000 lbs
	Lift Height	70'
	Forward Reach	53'10"
	Frame Leveling L/R	8°
	Operating Weight	47,300 lbs

Power Train

	Engine	Perkins 130 hp Tier III
	Fuel Capacity	72 gal
	Transmission	Dana 3-speed
	Axle	Dana
	Brakes	Inboard Wet Disc
	Parking Brake	SAHR


Tires

	Tires (Standard Eq)	Foamed Filled 17.5 x 25 E3
---	---------------------	-------------------------------


Hydraulics

	GPM	49
	PSI	4,000
	Hydraulic Oil Capacity	58 gal


Dimensions

	Length to fork face	26'5"
	Width	102"
	Height	8'11"
	Wheel Base	147"
	Ground Clearance	15"
	Turning Radius	15'10"

Standard Equipment

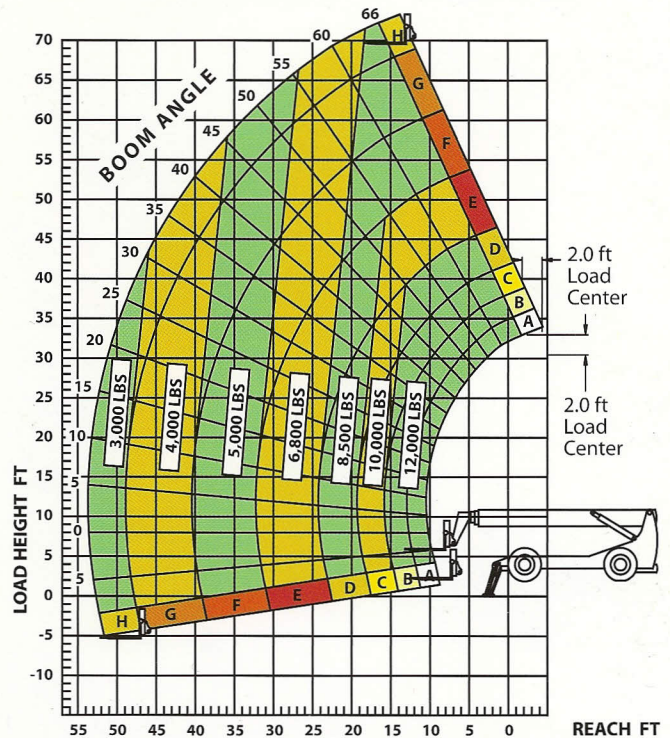
-  Heavy-duty Frame/Chassis and Roller Boom
- Melonite Pins and Rollers
- Auxiliary Hydraulics
- Direct Dual Control Hydraulic Valve Actuation
- Robust Wiring, No Spades, No Pins
- Rear Axle Stabilization (RAS)
- Center Inline Engine Drive Train
- Full-time Planetary 4-Wheel Drive
- Steering - 4-Wheel Circle, Crab, 2-Wheel Front
- Back-Up Alarm
- Open ROPS
- Suspension Seat
- Quick Attach (Common Fit)
- Xtreme Service Accessibility

Attachments

-  Standard Carriage - 72" or optional 48"
- + 10° Side Tilt Carriage - 48"
- + 45° Swing Carriage - 52" or 72"

XR1270 LOAD CHART - Outriggers Lowered

Standard Fork Carriage / Foam Filled Tires



- Pallet Forks - 2.25" x 4" x 48"
- Lumber Forks - 1.75" x 7" x 60"
- Block Forks - 2" x 2" x 48"
- Utility Bucket - 1.25 cu yd
- Concrete Hopper - 0.5 cu yd, or 1.00 cu yd
- Truss Boom - 12' or 15'
- Wallboard/Sheet Material Handler
- Fork Position Carriage
- Grapple

Accessories and Options

-  Cab Enclosed
- Limited Slip Differential
- 17.5 x 25 G2 Tires
- A/C
- 4th Steer Mode, Rear Pivot
- Work Light Package
- Rotating Beacon
- Pintle Hook
- Running lights, brake & turn signals
- 13/14x34 Xtreme Tire

Long-Life Rollers



Xtreme 360° Visibility



Operator Controls



Boom Angle Indicator



Constant improvement and engineering progress make it necessary that we reserve the right to make specification, equipment and price changes without notice.