

SJB-TB SERIES



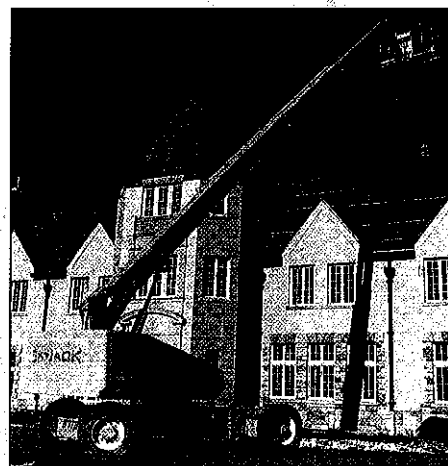
Check out these features:

- Driveable at full height
- Continuous drive and steer directional sensing
- Working heights to 93' (28.35m)
- Horizontal reach to 76'3" (23.24m)
- Unrestricted platform capacities to 500 lb (227kg)
- Hydraulic platform rotation
- 360° continuous turret rotation
- Primary and emergency controls on turret and platform
- 12Volt DC emergency power with separate battery
- Proportional drive, boom lift, extend, swing and jib controls
- 110V GFI protected outlet on platform
- Spring-applied hydraulically-released brakes
- Lifting lugs and tie down points
- Operator horn at base and on platform
- Foam filled tires
- Hydraulic jack for axle extend/retract operated from platform or base
- ANSI and CSA compliance

The SJB-TB Telescopic boom series represent the latest in Skyjack's line of mobile elevating work platforms. Designed for both slab and rough terrain construction applications, both models feature a Ford 2.5L LRG 425-EFI (82HP) dual fuel (gas/propane) engine as standard. The 5' jib featured on the 87TB increases reach on an already versatile machine. With unparalleled quality, reliability and performance, Skyjack strives to "exceed customers' expectations".

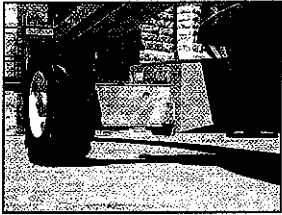
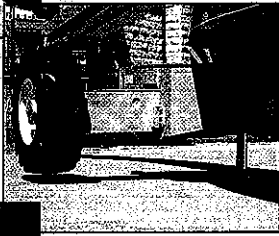
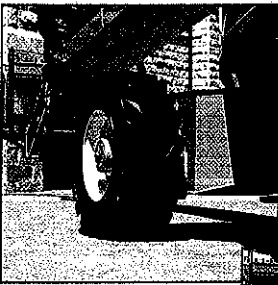
Optional Equipment

- Diesel engine
- Four wheel drive
- All motion alarm
- Flashing amber beacon
- Platform or chassis work lights
- Hostile environment package
- Hydraulic AC Generator
- Spring-loaded half gate
- Spring-loaded full gate
- Air or hydraulic line to platform
- Cold weather start kit

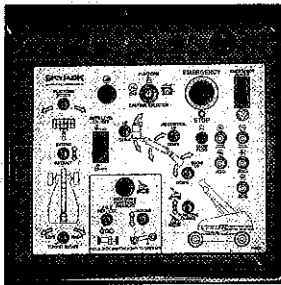


SKYJACK™

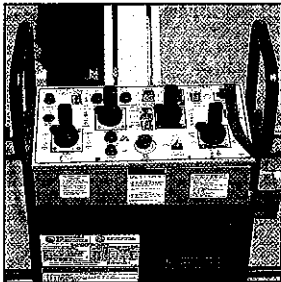
SJB-TB SERIES SPECIFICATIONS



Hydraulic jack for extend/retract operated from platform or base



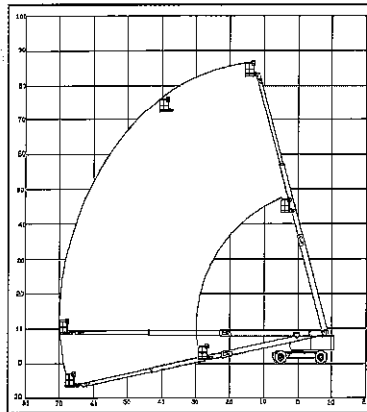
Base controls over ride platform controls and permit operation from base for service and testing



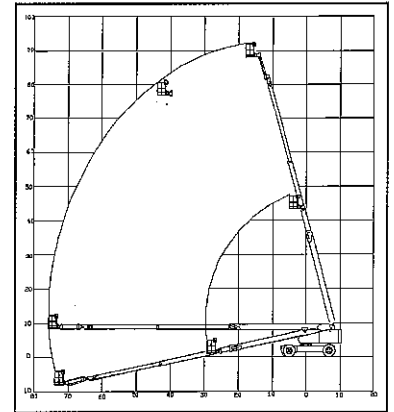
User friendly platform controls allow for smooth operation and maneuverability

| Model | 82TB | 87TB |
|-------------------------------------|---------------------------|---------------------------|
| Platform Height | 82' (25.0m) | 87' (26.52m) |
| Working Height | 88' (26.82m) | 93' (28.35m) |
| Platform Capacity | 500lb (227kg) | 500lb (227kg) |
| Platform Size | 30" x 96" (0.76m x 2.44m) | 30" x 96" (0.76m x 2.44m) |
| Horizontal Reach (CL Rotation) | 70'4" (21.4m) | 76'3" (23.24m) |
| Travel Speed (stowed) | 0-3.5mph (0-5.63km/h) | 0-3.5mph (0-5.63km/h) |
| Travel Speed (elevated) | 0-0.65mph (0-1.0km/h) | 0-0.65mph (0-1.0km/h) |
| Stowed Height | 9'8" (2.95m) | 9'9" (3.01m) |
| Stowed Length (Jib tucked) | 39'7" (12.07m) | 37'4" (11.35m) |
| Stowed Length (Jib out) | N/A | 42'1" (12.83m) |
| O/A Width (Axle retracted) | 8'4" (2.54m) | 8'4" (2.54m) |
| O/A Width (Axle expanded) | 12'4" (3.69m) | 12'4" (3.69m) |
| Ground Clearance | 11" (0.36m) | 11" (0.36m) |
| Tire Size | 385/65 x 22.5 | 385/65 x 22.5 |
| Battery | 12Volt, 850 CCA | 12Volt, 850 CCA |
| Horsepower (Ford LRG 425) | 82 HP | 82 HP |
| Horsepower (Optional Kubota Diesel) | 85 HP | 85 HP |
| Hydraulic Capacity | 45gal (205L) | 45gal (205L) |
| Fuel Tank Capacity | 40gal (150.9L) | 40gal (150.9L) |
| Weight | 31,600lb (14364kg) | 34,200lb (15550kg) |
| Gradeability (2 wheel drive) | 30% | 30% |

REACH DIAGRAMS



SJB-82TB



SJB-87TB

SKYJACK™

Corporate Sales Headquarters
Skyjack Incorporated
 55 Campbell Road
 Guelph Ontario N1H 1B9
 Canada
 Tel: 519-837-0888
 Fax: 519-837-8104
 Sales Direct: 877-288-8403
 E-mail: skyjack@skyjackinc.com
 www.skyjackinc.com

REGISTERED TRADEMARKS



SKYJACK

SKYDECK

SKYJACK HAS MANUFACTURING, SALES AND PRODUCT SUPPORT FACILITIES LOCATED THROUGHOUT THE WORLD, CALL US FOR MORE INFORMATION OR VISIT OUR WEBSITE

DISTRIBUTED BY:

This literature is for illustrative purposes only. Consult Part/Operating & Service manuals for proper procedures. Work platforms have been tested with applicable standards as interpreted by Skyjack. Specifications subject to change without notice.