

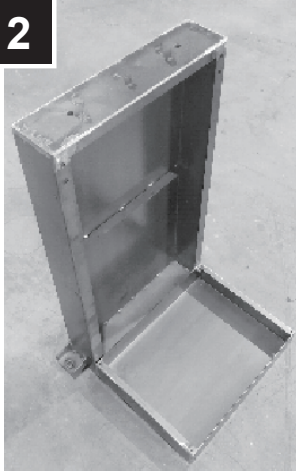
# THE STEPS OF ASSEMBLING THE STAND

1



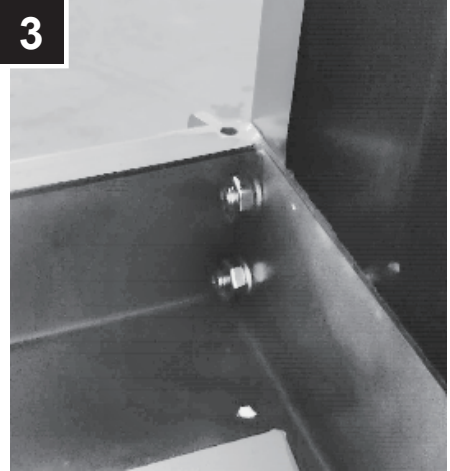
PART #216

2



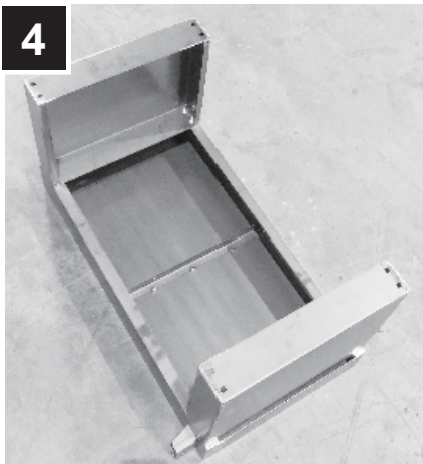
PART #212

3



NOTE: The correct direction of screws.

4



PART #212

5



PART #210

6



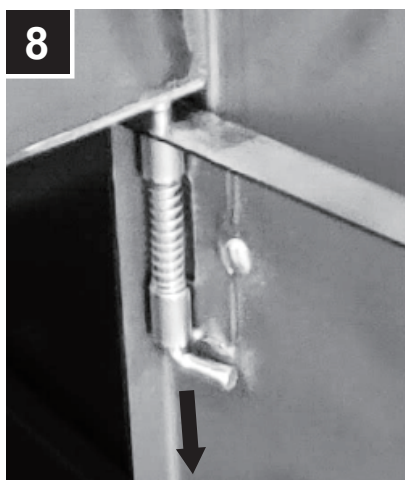
PART #217

7



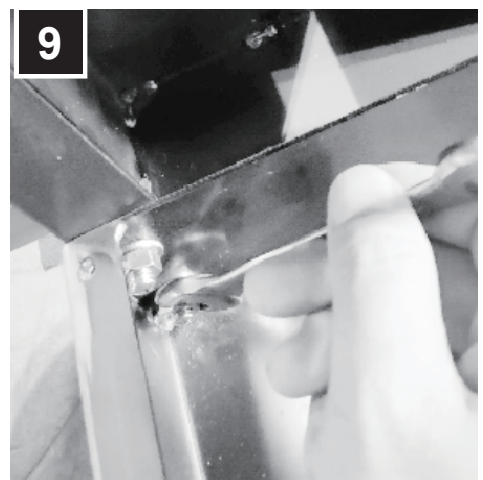
PART #213

8



Pull the pin down and fit it into the hole for PART#212.

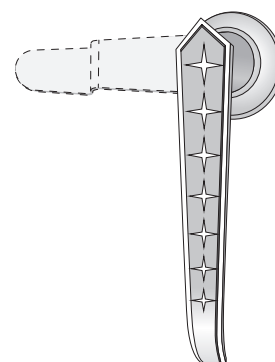
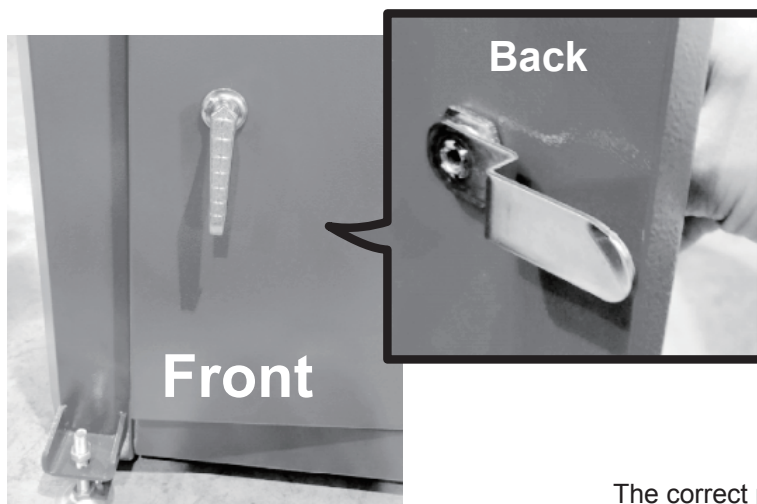
9



Lock the screw.

# THE ASSEMBLING METHOD OF THE DOOR HANDLE

1

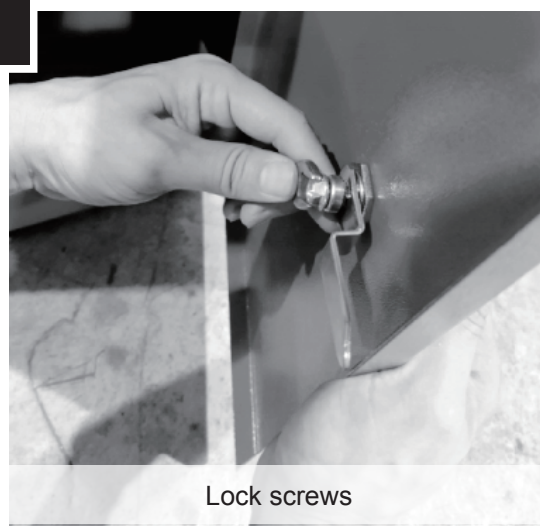


The correct position of the handle and metal plate.

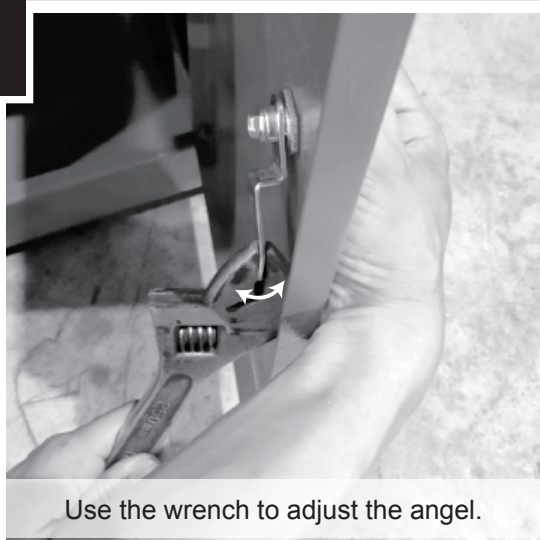
2



3

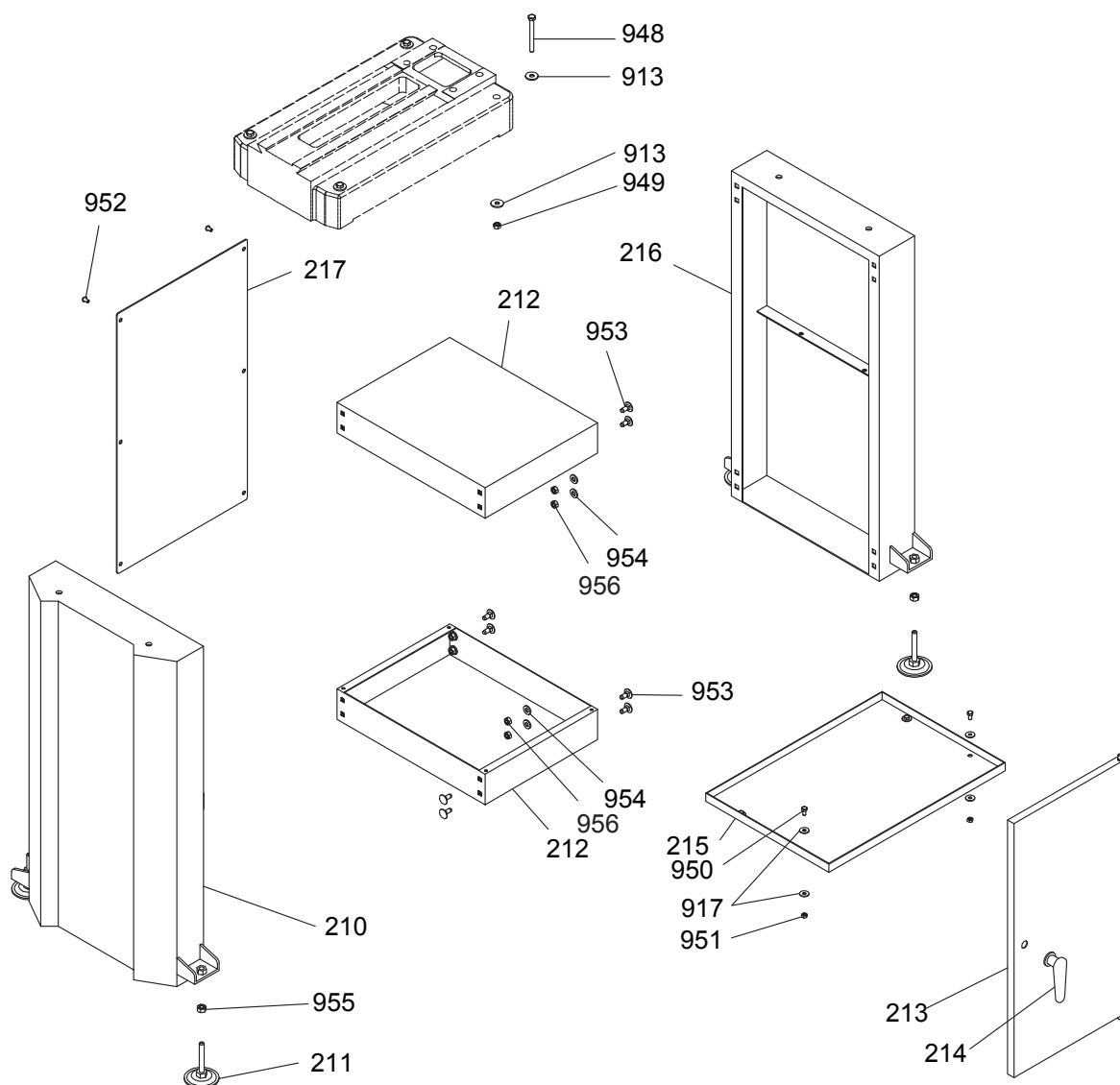


4



5





PART NO.	DESCRIPTION
210	STAND, FRONT PANEL
211	FOOT SCREW
212	STAND BRACE
213	DOOR
214	HANDLE
215	CABINET PLATE
216	STAND, REAR PANEL
217	STAND FLAT PANEL
913	WASHER
917	WASHER

PART NO.	DESCRIPTION
948	HEX BOLT
949	HEX NUT
950	HEX BOLT
951	NUT
952	CAP SCREW
953	CARRIAGE BOLT
954	WASHER
955	HEX NUT
956	HEX NUT