

Residential Charging Station

Wall Mount AC Charger

Product Features

- › Compatible 7/11/22kW
- › Reservation charging/schedule charging, resume charging after fault recovered
- › With smart temperature sensor, adjust run-time power
- › Low power consumption, environmental protection
- › IP55
- › OTA upgrade, Dialog and Troubleshooting
- › Smart lamp signals

Main function

- QR-code/ BLE/Card/Plug and Charge
- 3.5/4.3 inch color LCD (Optional)
 - Smart charging
- With 30mA Type A RCD + 6mA DC detector
 - OCPP 1.6J/2.0J (Optional)
 - BLE+ Eth/ Wi-Fi/ 4G (Optional)

Scenario

Designed for public parking lots, commercial buildings, community properties and household which have the requirement of EV charger, support wall mounted and floor mounted installation.



Main Performance and Characteristics

| Parameters | Model | CL5434-A07B | CL5434-A11A | CL5434-A22A |
|---------------------|----------------------|--|-------------|-------------|
| Input | Power supply | P+N+PE | 3P+N+PE | |
| | Voltage | 200~260V | 360~440V | |
| | Current | 32A | 16A | 32A |
| | Frequency | 45~65Hz | | |
| Output | Voltage | 200~260V | 360~440V | |
| | Max current | 32A | 16A | 32A |
| | Rated power | 7kW | 11kW | 22kW |
| User interface | Charge plug | Type 1/ Type 2 | | |
| | Cable length | 5 meter (include connector) | | |
| | Enclosure | Plastic | | |
| | LED indicator | Green/Yellow/Blue/Red | | |
| | LCD display | 3.5"/4.3" color LCD (Optional) | | |
| | RFID card reader | Non-contact (ISO/IEC14443 A) | | |
| | Start method | Card/QR code/ BLE/ Plug and Charge | | |
| Communication | Local interface | BLE 5.0,RS 485 | | |
| | Uplink interface | Ethernet/4G/ Wi-Fi (Optional) | | |
| | Protocol | OCPP1.6J/2.0J(Optional) | | |
| Safety | RCD | 30mA TypeA+6mA DC | | |
| | Emergency stop | Yes | | |
| | Protection grade | IP55 | | |
| | Anti-collision grade | IK08 | | |
| | Certification | CE, CB | | |
| | Standard | EN/IEC 61851-1:2017 | | |
| Working environment | Installation | Wall mounted/ Ground standing (Optional with pedestal) | | |
| | Working temperature | -25℃~55℃ (with LCD) | | |
| | | -30℃~55℃ (without LCD) | | |
| | Working humidity | 5%~95% (Non-condensation) | | |
| | Storage temperature | -40℃~70℃ | | |
| Package | Altitude | ≤2000m | | |
| | Product size | 218*109*404mm(W*D*H) | | |
| | Package size | 517*432*207mm(L*W*H) | | |
| | Net weight | 2.8kg | 3.7kg | 4.9kg |
| | Gross weight | 3.8 kg | 4.7kg | 5.9kg |
| | Packaging material | Carton box | | |
| Others | Warranty | 2 years | | |



Electric Vehicle Charger

20kW DC Charger

Product Features

- › Programmable charging mode
- › Comprehensive protection
- › Multiple communication modes
- › 4.3 inch touch screen
- › European standard
- › Flexible installation



Main Performance and Characteristics

| | |
|-----------------------------|--|
| Model | EVD-20S |
| Input voltage | 320~475V AC |
| Rated input voltage | 400V AC |
| Frequency | 50/60 Hz |
| DC plug type | CSS Type 2 |
| Output voltage range | CCS (150~1000V) |
| Max. output power | 20kW |
| Max. output current | 50A |
| Voltage accuracy | <±0.5% |
| Current accuracy | ≤±1% (at 20%~100% of rated power) |
| Voltage-regulating accuracy | <±0.5% |
| Current-regulating accuracy | <±1% |
| Ripple coefficient | RMS: ±0.5%; Peak: <±1% |
| Meeting accuracy | 0.5% |
| Efficiency | ≥94% |
| Cable length | 5m |
| Protection | Over voltage protection, under voltage protection, overload protection, over-temp protection, emergency protection |
| Display | 4.3 inch screen/ Opt |
| Ethernet/ Wifi/ 4G | Yes/ Yes/ Opt |
| Charging mode | APP/ RFID (opt)/ Plug and Charge |
| Indicator | Yes |
| Emergency stop | Yes |
| Protection degree | IP54 |
| Operating temperature | -25°C ~+50°C |
| Relative humidity | 0%~95% non-condensing |
| Maximum altitude | 2000m |
| Cooling | Forced air cooling |
| Standby power consumption | <30W |
| Noise emission | <65dB |
| Dimension | 450*670*206 mm (W*H*D) |
| Weight | 50kg |
| Certificate | CE RCM |



Electric Vehicle Charger

22kW AC Charger

Product Features

- › Compatible 22kW
- › Resume charging after fault recovered
- › Support online operation and payment
- › With smart temperature sensor, adjust run-time power
- › OTA upgrade, Dialog and Troubleshooting
- › Compatible plug type and socket type

Main function

- QR-code/BLE/Card/Plug and Charge
 - 3.5 inch color LCD
- With 30mA Type A RCD + 6mA DC detector
 - OCPP 1.6J/2.0J (Optional)
 - MID Certification
- Ethernet/4G/Wi-Fi/BLE

Scenario

Designed for public parking lots and commercial buildings, apartment buildings, office buildings where the requirement of EV AC charger have.



Main Performance and Characteristics

| Parameters | Model | T-Power 22KW | | |
|---------------------|-----------------------|--|---------------------------------|--------|
| Input | Power supply | 3P+N+PE | | |
| | Voltage | 400VAC±15% | | |
| | Current | 32A | | |
| | Frequency | 45~65Hz | | |
| Output | Voltage | 400VAC | | |
| | Max current | 32A | | |
| | Rated power | 22kW | | |
| User interface | Charge plug | Type2 | | |
| | Cable length | 5 meter (include connector) | | |
| | Enclosure | Galvanized steel | | |
| | LED indicator | Green/Yellow/Red | | |
| | LCD display | 3.5" LCD | | |
| | RFID card reader | Non-contact (ISO/IEC14443 A) | | |
| | Start method | Card/QR code/Plug and Charge | | |
| | Emergency stop | Yes | | |
| | Communication | Communication Interface | Ethernet/4G/WIFI/BLE (Optional) | |
| Protocol | | OCPP1.6J/2.0J(Optional) | | |
| Safety | Energy Meter | MID | | |
| | RCD | 30mA TypeA+6mA DC | | |
| | Protection grade | IP54 | | |
| | Anti-collision grade | IK10 | | |
| | Electrical protection | Over-current, Leakage, Short Circuit, Grounding, Lightning, Under-voltage, Over-voltage and Over-temperature | | |
| | Certification | CE | | |
| | Standard | EN/IEC 61851-1 | | |
| Working environment | Installation | Wall mounted/ Ground standing (Optional with pedestal) | | |
| | Working temperature | -25℃~55℃ (with LCD) | | |
| | Working humidity | 5%~95% (Non-condensation) | | |
| | Storage temperature | -40℃~+70℃ | | |
| | Altitude | ≤2000m | | |
| Package | Product size | 320*173*490mm(W*D*H) | | |
| | Package size | 666*496*227mm(L*W*H) | | |
| | Net weight | 11kg | 11.5kg | 13kg |
| | Gross weight | 12kg | 12.5kg | 13.5kg |
| | Packaging material | Carton box | | |
| Others | Warranty | 5 years | | |



Electric Vehicle Charger

40kW DC Charger

Product Features

- › Programmable charging mode
- › Comprehensive protection
- › Multiple communication modes
- › 7 inch touch screen
- › EU and JAP standard
- › Dual output ports



Main Performance and Characteristics

| | |
|-----------------------------|---|
| Model | EVD-40D |
| Input voltage | 320~475V AC |
| Rated input voltage | 400V AC |
| Frequency | 50/60 Hz |
| DC plug type | CSS Type 2 (default), CHAdeMO (opt), double plugs |
| Output voltage range | CCS (150~1000V), CHAdeMO (150~500V) |
| Max. output power | 40kW |
| Max. output current | CCS 100A, CHAdeMO 125A |
| Voltage accuracy | <±0.5% |
| Current accuracy | ≤±1% (at 20%~100% of rated power) |
| Voltage-regulating accuracy | <±0.5% |
| Current-regulating accuracy | <±1% |
| Ripple coefficient | RMS: ±0.5%; Peak: <±1% |
| Meeting accuracy | 0.5% |
| Efficiency | ≥94% |
| Cable length | 5m |
| Protection | Over voltage protection, under voltage protection, overload protection, earth leakage protection, over-temp protection, short circuit protection, lightening protection |
| Display | 7 inch screen/ Opt |
| Ethernet/ Wifi/ 4G | Yes/ Yes/ Opt |
| Charging mode | APP/ RFID (opt)/ Plug and Charge |
| Indicator | Yes |
| Emergency stop | Yes |
| Protection degree | IP54 |
| Operating temperature | -25°C ~+50°C |
| Relative humidity | 5%~95% non-condensing |
| Maximum altitude | 2000m |
| Cooling | Forced air cooling |
| Standby power consumption | <30W |
| Noise emission | <65dB |
| Dimension | 532*858*300 mm (W*H*D) |
| Weight | 84kg |
| Certificate | CE RCM |



Electric Vehicle Charger

3.3kW AC Charger

Product Features

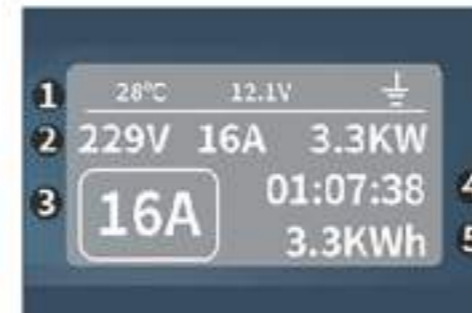
- › Compact design
- › One-click switch of 4 levels of power: 8A/10A/13A/16A
- › Small display with light indicator
- › Reserve charging for 1 to 10 hours



Main Performance and Characteristics

| | |
|--|--|
| Rated AC operating voltage | 220±20%V AC |
| Rated AC operating current | 16A |
| Operating frequency | 47-63Hz |
| Residual current rated operating current | M22mA |
| Duty ratio | 26.67%@1kHz |
| Working temperature | -30°C to +55°C |
| Operating humidity range | 3 to 95% RH |
| Storage temperature range | -50°C to 85°C |
| Elevation | Less than 2000m |
| Flame retardant rating | UL94V0 |
| Protection function | Overvoltage protection; Undervoltage protection; Overcurrent protection; Electricity leakage protection; Grounding protection; Continuous monitoring of grounding protection; Lightning protection; Over-temperature protection; Power regulation 8A, 10A, 13A, 16A (touch adjustment) |

Display analysis



1. 28°C real-time temperature display; 12.1V single voltage; Ground line display.
2. 229V power supply voltage; 16A charging current; 3.3kW single cumulative charging degree.
3. 16A charging current is selected.
4. 01:07:38 single cumulative charging time.
5. 3.3kWh: average hourly charging degree.



Electric Vehicle Charging Cable

5m EV Charging Cable

Product Features

- › 3-phase 22kW (max) 5-meter charging cable
- › European standard 7-hole connector
- › Compact design with storage bag
- › Support intelligent security lock function and smart temperature control
- › Made of highly flame-retardant and high strength material, secure and durable



Main Performance and Characteristics

Type 2 to Type 2 EC Charging Cable with rubber cover and storage bag. Compatible for all Electric Vehicles and Plug In Hybrid Electric Vehicles that use a Type 2 charging connector.

| | |
|-----------------------|-----------------------|
| Colour | Black + White |
| Material | ABS Plastic + Rubber |
| Connector Standard | IEC 62752-2016 Type 2 |
| Input Voltage | AC 230V \pm 10% |
| Charging Rate | 22kW |
| Output Current | 32A |
| Number of Phases | 3 |
| Operating Temperature | -40°C to +50°C |
| Net Weight | 3.18kg |



Plug into the VEHICLE



Plug into the CHARGER



Dust-proof cover

Ergonomic design handle:
Angled horizontal bending design in line with the habit of manual force

Thicker oxygen-free pure copper core cable



Commercial EV Charger

30~60kW Portable DC Charger

Product Features

- › Portable and movable
- › Average efficiency $\geq 96\%$ at nominal output power
- › Ethernet/3G/4G/OCPP communication
- › High protection grade as IP54
- › APP operation or RFID authentication or plug and play

Scenario



Main Performance and Characteristics

| Model | 30kW | 60kW |
|-------------------------|--|------|
| Phases/Lines | 3 phases+neutral+PE | |
| Voltage | 380VAC $\pm 20\%$ | |
| Frequency | 50Hz $\pm 10\%$ | |
| Power | 30 | 60 |
| Voltage | 200-1000VDC | |
| Current (max.) | CCS 2 200A ,CHAdeMO 125A,GB/T 250A | |
| Cable Length | 5m | |
| Connector | CCS 2 or CHAdeMO or GB/T, Up to 2 charging guns | |
| Power Factor | ≥ 0.99 | |
| THD Value | $\leq 5\%$ | |
| Stable Voltage Accuracy | $\leq \pm 0.5\%$ | |
| Stable Current Accuracy | $\leq \pm 1\%$ | |
| Efficiency | $\geq 96\%$ at nominal output power | |
| Housing Material | Galvanized steel | |
| Installation Method | Portable | |
| LED Indicator | 7 inches | |
| Emergency Stop Button | Mushroom headed type | |
| Payment Method | RFID CARD | |
| External | Ethernet, and 3G/4G | |
| Communication Protocol | OCPP1.6J | |
| Working Temperature | -30°C - $+55^{\circ}\text{C}$ | |
| Working Altitude | $\leq 2000\text{M}$ | |
| Application Site | Indoor/Outdoor | |
| Cooling Method | Forced air cool | |
| Multiple Protection | Over Current, Under Current, Over Voltage, Residual Current, Surge Protection, Short Circuit, Earth Fault at input and output, Input Phase reversal, Emergency Shutdown with alarm, over temperature, Protection against electric shock. | |
| Warranty | 1 year | |
| Product Dimension | 650*750*1000mm(W*D*H) | |
| Net Weight | 60/80KG | |
| External Packing | Wooden case | |



Commercial EV Charger

60~120kW DC Charger

Product Features

- › Constant power from 50~1000VDC
- › Average efficiency $\geq 96\%$ at nominal output power
- › One charger with two outputs, simultaneously charging
- › Ethernet/4G/OCPP communication
- › High protection grade as IP54
- › CE certificate



Main Performance and Characteristics

| Model | 60kW | 80kW | 100kW | 120kW |
|--------------------------------|--|------|-------|-------|
| Phases/Lines | 3 phases+neutral+PE | | | |
| Input Voltage | 380VAC $\pm 20\%$ | | | |
| Frequency | 50Hz $\pm 10\%$ | | | |
| Power | 60 | 80 | 100 | 120 |
| Output Voltage | 50-1000VDC | | | |
| Current (max.) | CCS 2 200A | | | |
| Cable Length | 5m | | | |
| Connector | CCS 2*2 | | | |
| Power Factor | 0.99 | | | |
| Voltage stabilisation Accuracy | $\leq \pm 0.5\%$ | | | |
| Current stabilisation Accuracy | $\leq \pm 1\%$ | | | |
| Efficiency (peak value) | $\geq 96\%$ | | | |
| Insulation Resistance | $\geq 10M$ | | | |
| Insulation Strength | Output to ground, input to ground, input to output 3.5kV DC applied, 1min without arc and flashover | | | |
| Relative Humidity | 95% (no condensation) | | | |
| Protection Level | IP54 | | | |
| Payment Method | 10 (it can withstand severe impact of 20J energy mechanical impact test) | | | |
| RFID Reader | Included | | | |
| Connection With Back Office | Ethernet/GPRS/4G | | | |
| Communication Protocol | OCPP1.6J | | | |
| Operation Temperature | $-20^{\circ}C \sim +70^{\circ}C$ | | | |
| Working Altitude | $\leq 2000M$ | | | |
| Start-up Delay | 2~4S | | | |
| Cooling Method | Forced air cool | | | |
| Multiple Protection | Over Current, Under Current, Over Voltage, Residual Current, Surge Protection, Short Circuit, Earth Fault at input and output, Input Phase reversal, Emergency Shutdown with alarm, over temperature, Protection against electric shock. | | | |
| Warranty | 1 year | | | |
| Product Dimension | 700*400*1870mm(W*D*H) | | | |
| Net Weight | 200KG | | | |
| External Packing | Wooden case | | | |



Commercial EV Charger

60~180kW DC Charger

Product Features

- › 300-1000V constant output power
- › Plug lock protection
- › Smart power distribution, single module fault will not affect others
- › AC/DC integrated, charge plug can be configured as required
- › Reservation charging, schedule charging
- › Real time power regulation with smart temperature sensor
- › OTA upgrade, dialog and troubleshooting

Main function

- QR-code/BLE/Card/Plug and Charge
- 7 inch color touchable LCD
- With MID/PTB certification
- Multiple protections include Leakage, Over-voltage, Under-voltage, Over-current, Short circuit, Lightning protection, Anti-reverse connection, Emergency stop, Insulation detection, Adhesion detection and others
- OCPP 1.6J/2.0J (Optional)
- Ethernet RJ-45/ 4G



Main Performance and Characteristics

| Parameters | Model | CL5830-C08A | CL5830-C08B | CL5830-B08A | CL5830-B08B |
|------------------------|--------------------------|--|-------------------------------|------------------------------------|----------------|
| Input | Power supply | 3P+N+PE | | | |
| | Voltage | 400VAC±10% | | | |
| | Max current | 340A | | | |
| | Frequency | 45~65Hz | | | |
| Output | Voltage | CCS2 : 150~1000V DC CHAdeMO : 500V DC Type2 : 360~440V AC | | | |
| | Max current | CCS2 : 200A | | CHAdeMO : 125A Type2 : 32A | |
| | Rated power | CCS2: 60~180kW CHAdeMO: 30~60kW Type2: 22kW | CCS2: 60~180kW Type2: 22kW | CCS2: 60~180kW CHAdeMO: 30~60kW | CCS2: 60~180kW |
| User interface | Charge plug | CCS2+CHAdeMO+Type2 | CCS2+CCS2+Type2 | CCS2+CHAdeMO | CCS2+CCS2 |
| | Cable length | 5 meters (Optional) | | | |
| | Enclosure | Galvanized Steel | | | |
| | LED indicator | Green/Yellow/Red | | | |
| | LCD display | 7" Color Touchable LCD | | | |
| | RFID card reader | Non-contact (ISO/IEC14443 A) | | | |
| | POS terminal | Optional | | | |
| | Start method | QR-code/ Card/ Plug and Charge | | | |
| Communication | Communication Interface | Ethernet/4G | | | |
| | Protocol | OCPP1.6J/2.0J(Optional) | | | |
| Electrical Performance | Efficiency | ≥95% (Half load and above) | | | |
| | Power factor | ≥0.98(Rated load) | | | |
| | Harmonic distortion rate | ≤5%(Half load and above) | | | |
| | Ripple coefficient | ≤1%(Peak to peak) | | | |
| Safety | Energy Meter | DC : PTB AC : MID | | | |
| | Emergency stop | Yes | | | |
| | RCD | Type A | | | |
| | Protection grade | IP54 and IK10 | | | |
| | Electrical protection | Over-current, Leakage, Short Circuit, Grounding, Lightning, Under-voltage, Over-voltage and Over-temperature | | | |
| | Certification | CE, CB | | | |
| | Standard | EN/IEC 61851-1, EN/IEC 61851-23, IEC 61851-24, EN/IEC 61851-21-1 | | | |
| Working environment | Installation | Floor mounted | | | |
| | Cooling | Fan cooling | | | |
| | Noise | ≤65dB | | | |
| | Temperature range | Working at -25°C~ +50°C, Storage at -40°C~ +70°C | | | |
| | Working humidity | 5%~95% (non-condensation) | | | |
| Package | Altitude | ≤2000m | | | |
| | Product size | 850*850*1800mm(W*D*H) | | | |
| | Package size | 1186*966*2034mm(L*W*H) | | | |
| | N.W. (exclude module) | 324kg | 324kg | 318kg | 318kg |
| | G.W. (exclude module) | 418kg | 418kg | 412kg | 412kg |
| Packaging material | Wooden box | | | | |
| Others | Warranty | 2 years | | | |



Commercial EV Charger

200~400kW DC Charger

Product Features

- › Constant power from 200-1000V DC
- › Average efficiency $\geq 96\%$ at nominal output power
- › One charger with two outputs, simultaneously charging
- › Ethernet/3G/4G/OCPP communication
- › High protection grade as IP54
- › APP operation/RFID authentication/plug and charge
- › CE certificate NB 1282



Main Performance and Characteristics

| | |
|-------------------------|--|
| Model | 200/220/240/260/280/300/400kW |
| Phases/Lines | 3 phases+neutral+PE |
| Voltage | 415VAC $\pm 20\%$ |
| Frequency | 50Hz $\pm 10\%$ |
| Power | 200-400kW |
| Voltage | 200-1000VDC |
| Current (max.) | CCS 2 200A ,CHAdeMO 125A,GB/T 250A, Up to two charging guns |
| Cable Length | 5m |
| Connector | CCS 2 or CHAdeMO or GB/T |
| Power Factor | ≥ 0.99 |
| THD Value | $\leq 5\%$ |
| Stable Voltage Accuracy | $\leq \pm 0.5\%$ |
| Stable Current Accuracy | $\leq \pm 1\%$ |
| Efficiency | $\geq 96\%$ at nominal output power |
| Housing Material | Galvanized steel |
| Installation Method | Floor-stand |
| LED Indicator | 7 inches |
| Emergency Stop Button | Mushroom headed type |
| Payment Method | RFID CARD |
| External | Ethernet, and 3G/4G |
| Communication Protocol | OCPP1.6J |
| Working Temperature | -30°C-+55°C |
| Working Altitude | $\leq 2000\text{M}$ |
| Application Site | Indoor/Outdoor |
| Cooling Method | Forced air cool |
| Multiple Protection | Over Current, Under Current, Over Voltage, Residual Current, Surge Protection, Short Circuit, Earth Fault at input and output, Input Phase reversal, Emergency Shutdown with alarm, over temperature, Protection against electric shock. |
| Warranty | 1 year |
| Product Dimension | 1400*800*1900mm (W*D*H) |
| Net Weight | 230KG |
| External Packing | Wooden case |

Charging APP

IOS & Android

Product Features

- › Scan QR code to charge
- › Charge by amount of power
- › Users will be notified by SMS when charging is finished (feature available in future update)
- › Penalty will apply if the parking slot is still occupied after 30 minutes (count from the completion of charging process)



T-Power



Scan to download

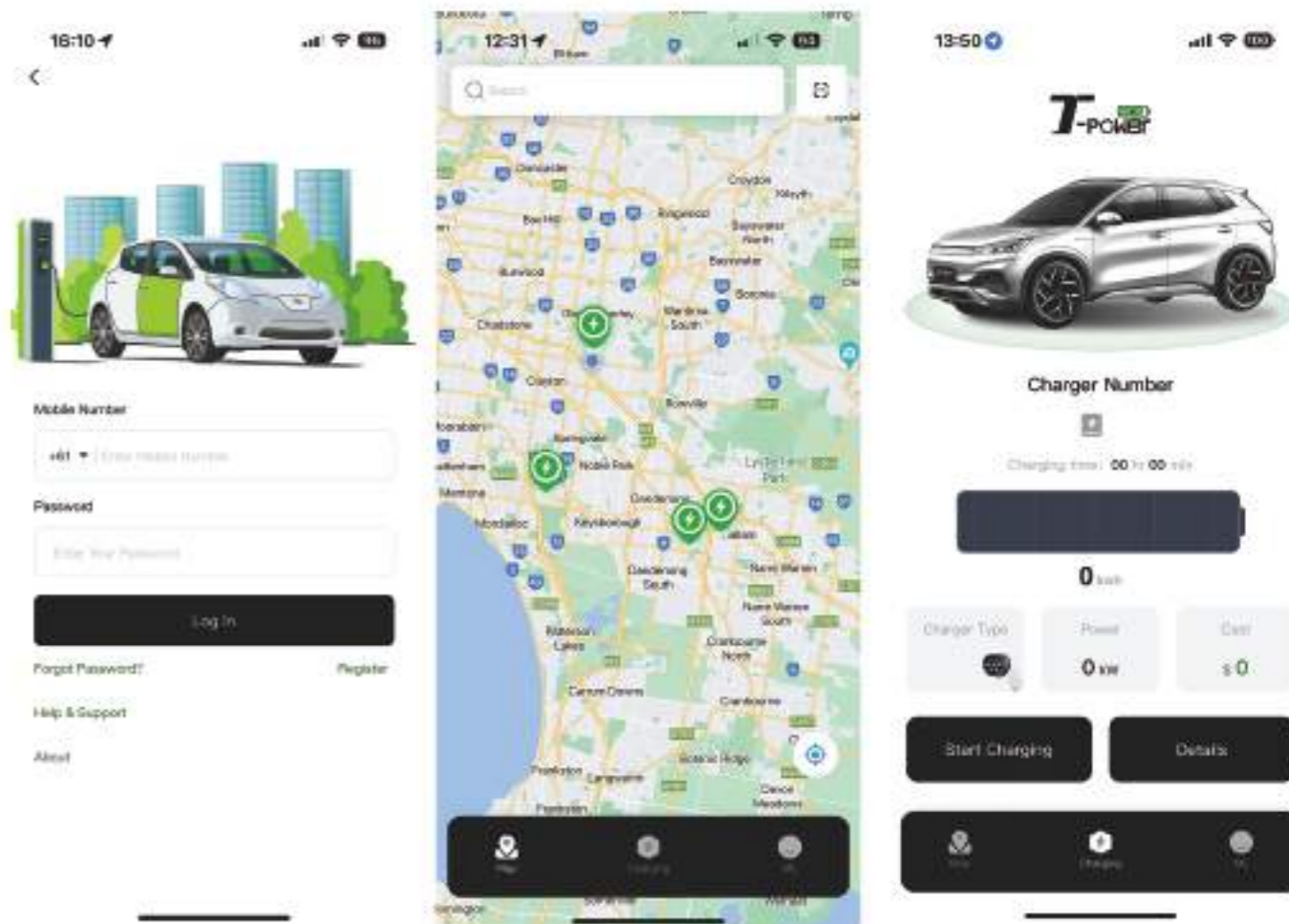
HOW TO CHARGE YOUR VEHICLE

- 1
SCAN the QR code to download the APP or in App Store / Google Play
- 2 SIGN UP and enter your credit card details
- 3 FIND the charger on the and see details
Check your registered email address for invoice
- 4 SCAN the Charger QR code displayed ON the charger (not the APP download QR code)
- 5 START CHARGING following the instruction in the APP
- 6 STOP CHARGING by tapping in the APP
- 7 UNPLUG your vehicle (Some vehicles may need unlocking first)

For customer support call 1300 772 678 or email us info@t-power.com.au
t-power.com.au evc.t-power.com.au

Instructions on how to charge your EV

Platform Overview



Login Interface

Log into your T-Power account using your phone number.

Map Interface

Find/Navigate your nearest T-Power charger.

Click on the icon to see details of the charger such as socket type, charging power, availability, and cost (AUD per kWh).

Charging Interface

Display charging status and enabling user to charge or end a charging session.

Invoice send to email at the end of charging session.

TUTORIALS on how to register an account & how to use the APP for charging your EV is available on **T-POWER's LinkedIn**.

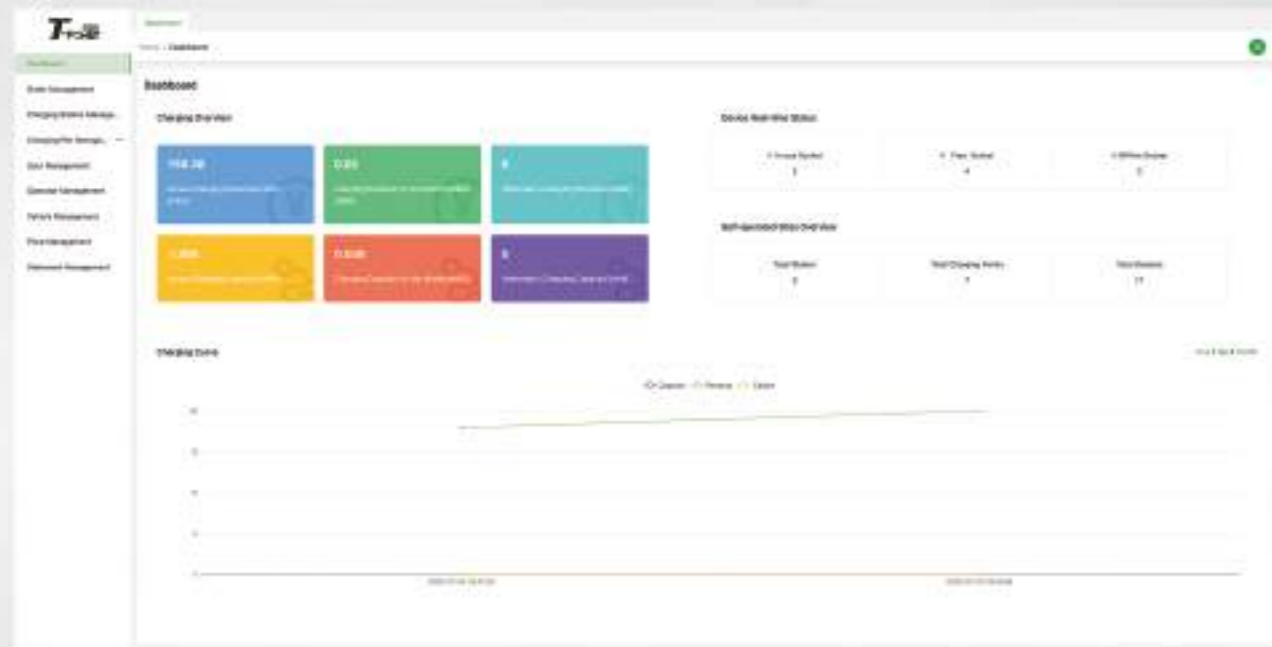
There is **INSTRUCTIONS** on how to charge your EV displayed on **each T-POWER public charger**.

EV Charger Online Management Platform

Product Features

- › Charging station/charging pile/order/user/operator/vehicle/price/statement management.
- › Integration of experience in field station operation, diversified modules analysis. One page to cover all operation-related information, helping enterprises improve revenue and reduce costs.
- › Multi-dimensional security system

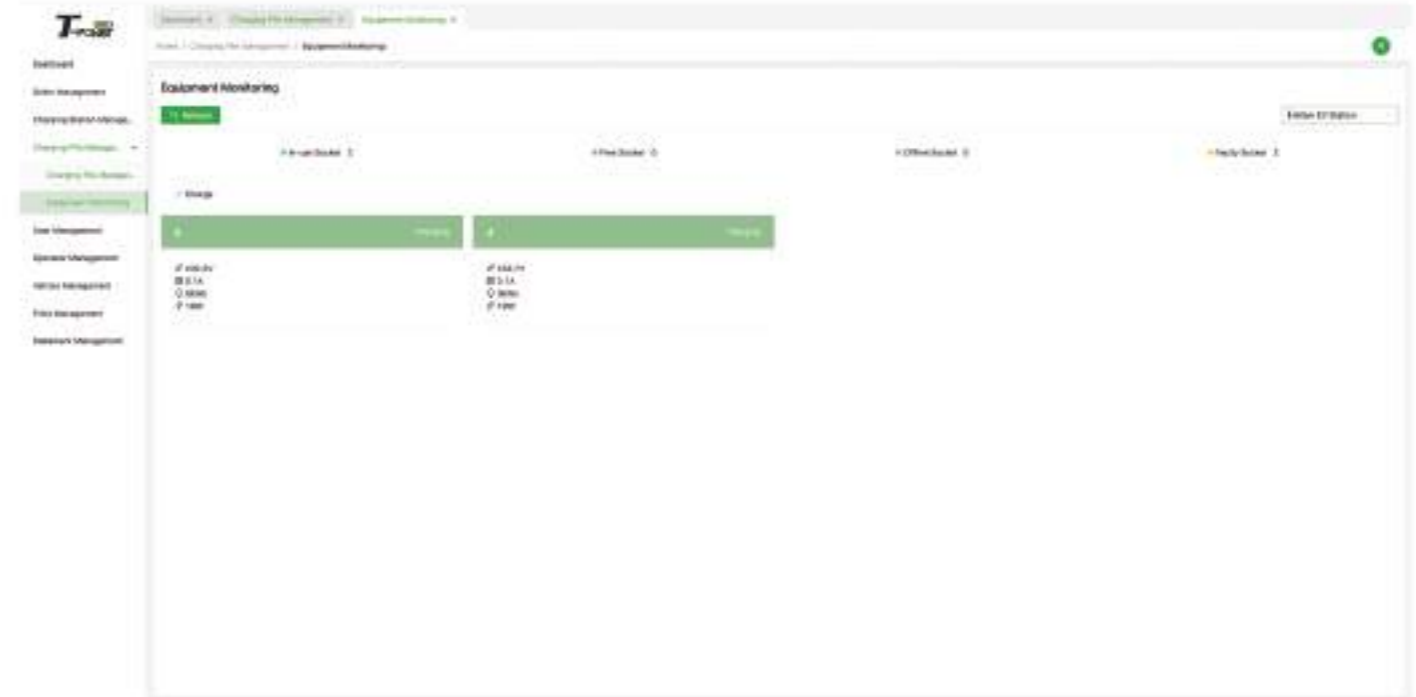
Dashboard Display



Platform Overview

Under Charging Pile Management

1. Equipment Management



2. Load Management

