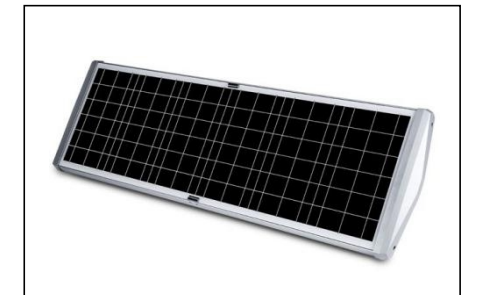


# S3

## SERIES INTEGRATED SOLAR LED STREET LIGHT



### PRODUCT DESCRIPTION:

The new S3 Series is LUXMAN's 3rd generation 'All in One' solar LED lighting system. All aluminum alloy design with sandblasting oxidation treatment adopted. The S3 Series comes with remote control to select among the preset PIR, Timer or PIR + Timer options. The S3 series possess advanced optical design, enhanced solar panel capabilities with improved design to separately access to LED panel, IP66 water proof battery box and intelligent controller to make it very effective and quick to implement lighting solutions. This robust stand-alone solution is designed for a sustainable future in both residential areas and urban areas.

### FEATURES:

- \* Module Controller Design and One Step Pull-out Battery Pack, easy to maintain.
- \* Vertical sleeve bracket design, easy to install.
- \* Remote control included.
- \* Three kinds of lighting mode selectable according to the different installation environment.
- \* Detachable window design for battery box and intelligent controller

### APPLICATION:

Residential areas, Island, Square, Garden, Pathway, Campus, Car Park, Building, Industrial Zone, Urban area, Natural disaster-prone areas (like earthquake areas) etc.



Lights up 12 hours a night, supports 7 rainy days, 365 days without lights off.

The intelligent control system scientifically calculates the lighting output according to the weather and battery capacity to ensure the lighting time, which can realize the lighting up throughout the whole year.



Real-time working condition monitoring and modular in design. Easy for maintenance.

Three different display lights show the real-time working status of the solar panels, batteries, and light sources, making it easy to maintain.



Easy to maintain

The one-step pull-out battery pack modular design and modular controller design make it easy to maintain and replace after installation.



High light efficiency

The maximum light efficiency of the S3 series can reach up to 160 Lm/W, which makes the energy conversion more efficient.



#### Remote control

The switch of the luminaire can be controlled by a remote control and the user can set the illumination mode and illumination time.



#### Adjustable mounting bracket

The S3 series is available with sleeve brackets, hoop brackets and 0-72 ° adjustable brackets for maximum installation flexibility.



Launched in 2016, sales of 60,000 units +.

The LUXMAN S3 series product is developed on the basis of actual installation and market feedback over the past years' experience. This product is designed for engineering and commercial channels, and is highly praised by engineering customers and channel customers.



7\*24 hours After-sales service response

Each batch of LUXMAN goods has passed the internal standard testing and third-party professional testing before flowing into the consumption channel. It is our goal to control the after-sales to the lowest level. At the same time, LUXMAN provides each customer with prompt and effective after-sales service.

### Specification

PICTURE						
<b>Model No.</b>	UPF-S3 20	UPF-S3 30	UPF-S3 40	UPF-S3 50	UPF-S3 60	UPF-S3 80
<b>LED Power</b>	20W LED LAMP	30W LED LAMP	40W LED LAMP	50W LED LAMP	60W LED LAMP	80W LED LAMP
<b>Lumen Efficiency</b>	120LM/W	120LM/W	120LM/W	120LM/W	120LM/W	120LM/W
<b>System Lumens</b>	2400lm	3600lm	4800lm	6000lm	7200lm	9600lm
<b>Colour Temperature</b>	3000K - 6000K	3000K - 6000K	3000K - 6000K	3000K - 6000K	3000K - 6000K	3000K - 6000K
<b>Battery Spec.</b>	DC 12.8V 10.5AH	DC12.8V 14AH	DC12.8V 17.5AH	DC12.8V 21AH	DC12.8V 24.5AH	DC12.8V 28AH
<b>Solar panel Spec.</b>	18V 35W Polycrystal	18V 43W Polycrystal	18V 50W Polycrystal	18V 60W Polycrystal	18V 68W Polycrystal	18V 78W Polycrystal
<b>Charging time (full sunshine)</b>	7-8H	7-8H	7-8H	7-8H	7-8H	7-8H
<b>Operation rainy days (After fully charged)</b>	Support 5-7 raining days	Support 5-7 raining days	Support 5-7 raining days	Support 5-7 raining days	Support 5-7 raining days	Support 5-7 raining days
<b>Install height</b>	5-6M	6-7M	6-8M	7-8 Meters	7-9M	8-10M
<b>Product dimension L*W*H mm</b>	724*315H206 mm	L882*315*206 mm	1031*315*206 mm	1198*315*206 mm	1356*315*206 mm	1514*315*206 mm
<b>Carton box dimension L*W*H mm</b>	830*420*150 mm	980*420*150 mm	1140*420*150 mm	1310*420*150 mm	1460*420*150 mm	1630*420*150 mm
<b>Net weight</b>	8.0kg	9.0kg	12.80kg	14.50kg	14.10kg	15.40kg
<b>Gross weight</b>	9.70kg	12.60kg	14.00kg	16.00kg	17.50kg	18.00kg

\*160 lm/W product information on request.

Material & Operation conditions				
LED Brand	Bridgelux	Optical	70*140 °	Certificates
Control Type	Remote control	Control Options	PIR Sensor/Time Control	CE,FCC,ROHS
Battery Type	LifePO4 battery	Body material	Aluminum Alloy	
Solar Panel Type	Polycrystal	Finish	Anodizing+Powder coating	
Operation Temperature	-20°C to +50°C	Pole Fitter Diameter	φ60-φ80MM	
IP Rating	IP66	Mounting Type	Sleeve type	