

Fe



VERIFIQUE™

FENTANYL+ DETECTION TEST

*User Manual
Version • 1.1*

CONTENTS

USER MANUAL

Liability Notice & Terms of Use	2
Introduction	4
How the Test Works	5
What the Test Detects	6
Kit Contents	7
Test Card	8
Test Pen & Record Card	9
General Testing Process	10
Sample Collection	11
Conducting the Test	12
After the Test	13
Contact Verifique	14

Liability Notice and Terms of Use

Thank you for purchasing products from Veriteque USA, Inc. ("Verifique", "we", and "us"). Unless otherwise agreed in writing by us, your purchase and use of Verifique products ("Products"), and our supply of Products to you, are exclusively subject to and governed by these terms and conditions ("Terms").

1. Contract Terms. These Terms constitute the entire contract between you and Verifique ("Agreement"), and supersede all other representations and understandings between the parties, whether written or oral, with respect to the subject matter of these Terms. When you place an order for Products through our website (each an "Order"), this constitutes your commitment to purchase the Products identified in your order, and by ordering Products from us, you accept and are bound by these Terms. This Agreement is created when we accept your Order, either by sending a written confirmation or by shipping the ordered Product.
2. Payment. You must pay for all Products in full at the time of your Order; we will not ship Products for which we have not received payment in full.
3. Delivery. We deliver all Products FCA (INCOTERMS 2020) our shipping point. We may, in our discretion, make partial shipments and invoice each shipment separately. Our delivery dates are approximate only, and we are not liable for any penalty, loss or damage resulting from any delay in delivery. If we delay delivery for a cause beyond our reasonable control, we may terminate the affected Order or reschedule the delivery within a reasonable period of time. You may not refuse delivery or otherwise be relieved of any obligations as the result of a delay. Once you have placed your Order, you cannot cancel or change it unless we consent in writing, in which case you will pay cancellation charges or an adjustment in the purchase price, as specified by us. You may not return Products without our prior written consent. Products are considered delivered when we load them onto the commercial carrier at origin. At this point, you are responsible for risk of loss and damage, and title to purchased Products will pass to you.
4. NOTICE TO USERS. You are solely responsible for your use of Products and for making sure that the way you use Products complies with applicable laws, regulations and governmental policies and Product documentation. You must obtain all necessary approvals and permissions you may need to use the Products. It is your responsibility to make sure the Products are suitable for your particular use. You may not resell Products. Results of Products are presumptive only and, as such, they indicate the presumed presence of chemical groups and precursors which may be present in a given sample. ALL RESULTS SHOULD BE CONFIRMED BY AN APPROVED ANALYTICAL LABORATORY. All Products must be administered in strict accordance with the specific instruction and reference materials that accompany the products for best results. Verifique cannot anticipate all conditions for use of Products and does not accept responsibility for use or misuse in any particular application. Products have been designed for a variety of applications, under a variety of conditions, but are not designed or manufactured as a product for lethal or harmful purposes. You must exercise your reasonable judgment to determine Product suitability for any specific use-case, and application of the Products' presumptive analysis for their particular purposes. We advise you to review the reference materials relevant to the Product and complete the online training and certification process prior to use of any Product. Reference materials are available for all of Veriteque USA, Inc.'s products at the following link: www.Verifique.com/resources. Veriteque USA, Inc.'s online training and certification portal is available at the following link: www.Verifique.com/certification. If Verifique's test swabs are used to collect a sample from a consumable item such as plant material or food, such item should NOT be consumed, regardless of outcome of the test, and should be disposed of in accordance with applicable laws. If Verifique's test swabs are used to collect a sample from a reusable product that users come into direct contact with such as a vape pen or pipe, such item should be cleaned thoroughly with soap and wiped dry prior to use.
5. Limited Warranty and Disclaimers.
 1. We warrant to you, our direct customer, that each Product manufactured by us and sold to you under these Terms will be free from material defects in workmanship and materials under normal use for one (1) year from the date of delivery ("Warranty"). You may not return a Product unless authorized by our Returns Authorization (RA) Department. If you believe your Product does not meet the Warranty, cease use immediately and contact Verifique. If a Product proves to be defective in materials or workmanship within the Warranty period, we will repair or replace the defective Product and send it to you at our expense.
 2. The Warranty does not cover, and we have no responsibility, liability or obligation with respect to: (a) normal wear and tear, including chemical corrosion or decomposition; (b) accident, disaster or acts of nature (including extreme temperature, humidity, abrasives, dirt or corrosive material); (c) your fault or negligence or use of the Product other than as expressly permitted herein, or use in contravention of its documentation; (d) causes external to the Products; (e) storage, or handling in an improper, inadequate, or unapproved manner; or (f) modifications to or tampering with the Products.
 3. The Warranty extends to only the original purchaser. The remedies identified in this Section 5 are your sole and exclusive remedies, and our only liabilities, under the Warranty. **EXCEPT FOR THE WARRANTY DESCRIBED IN THIS SECTION 5, WE DISCLAIM ALL OTHER WARRANTIES, WHETHER EXPRESS OR IMPLIED, ORAL OR WRITTEN, WITH RESPECT TO PRODUCTS, INCLUDING WITHOUT LIMITATION IMPLIED WARRANTIES OF MERCHANTABILITY OR FITNESS FOR ANY PARTICULAR PURPOSE OR NON-INFRINGEMENT, OR RELATING TO CUSTOM, USAGE OR TRADE. WE DO NOT WARRANT THAT PRODUCTS ARE ERROR-FREE OR WILL ACCOMPLISH ANY PARTICULAR RESULT.** You acknowledge that you are responsible for your use of Products, including reliance upon results from such use, and that you will use professional care and judgment in using our Products and relying upon results. We have no liability or responsibility with respect to your reliance upon results from use of Products. You agree that you are not purchasing any Product from us in reliance upon any representation or warranty not specifically set forth in this Agreement, nor on the completion of the representations and warranties set forth herein or in any document or instrument referred to herein.

6. Your Indemnity. You will indemnify, defend with competent and experienced counsel acceptable to us, and hold us and our subsidiaries, affiliates and divisions, and their respective officers, directors, shareholders, agents and employees, harmless from and against any and all damages, liabilities, causes of action, suits, claims, demands, losses, fines, penalties, costs and expenses (including without limitation reasonable attorneys' fees) suffered or incurred by any of the foregoing entities or individuals arising from or in connection with (a) your negligence, misconduct, violation of applicable laws, breach of this Agreement, or noncompliance with Product documentation; (b) your misuse of Products.
7. Intellectual Property. As between you and us, we exclusively own all intellectual property rights relating to, covering, claiming, included and/or embodied in, our Products. Our license, sale, loan or lease of Products to you grants you only a limited, nontransferable right under our intellectual property only for the specific intended use of the Products you bought, licensed, borrowed or leased from us and strictly in accordance with and for the term of this Agreement. You will not modify, change, remove, cover or otherwise obscure any trademarks, logos, trade or service marks on Products, and you will not reverse engineer Products. Nothing in this Agreement limits our ability to enforce our intellectual property rights.
8. Limitations of Liability. TO THE MAXIMUM EXTENT PERMITTED BY APPLICABLE LAW, VERIFIQUE WILL NOT BE LIABLE TO YOU OR ANY THIRD PARTY UNDER ANY LEGAL THEORY (INCLUDING BUT NOT LIMITED TO CONTRACT, NEGLIGENCE, STRICT LIABILITY IN TORT OR WARRANTY OF ANY KIND) FOR ANY INDIRECT, SPECIAL, INCIDENTAL, PUNITIVE, OR CONSEQUENTIAL DAMAGES, COSTS OF COVER, LOST PROFITS, LOST DATA, LOSS OF BUSINESS, LOSS OF GOODWILL OR LOSS OF REVENUE, THAT YOU OR A THIRD PARTY MIGHT INCUR UNDER OR IN CONNECTION WITH THIS AGREEMENT, OR THAT MAY ARISE FROM OR IN CONNECTION WITH OUR PRODUCTS, EVEN IF WE HAD NOTICE OF THE POSSIBILITY OF SUCH DAMAGES; *PROVIDED, HOWEVER*, THAT THIS SENTENCE WILL NOT LIMIT DAMAGES CAUSED BY OUR GROSS NEGLIGENCE OR WILLFUL MISCONDUCT. IN ADDITION AND NOTWITHSTANDING ANYTHING TO THE CONTRARY, VERIFIQUE'S MAXIMUM AGGREGATE LIABILITY ARISING OUT OF OR IN CONNECTION WITH THIS AGREEMENT, OR ANY PRODUCT, IS LIMITED TO THE AMOUNT YOU PAID TO VERIFIQUE UNDER THE ORDER UNDER WHICH THE LIABILITY AROSE.
9. Export Restrictions. You acknowledge that each Product and any related technology, including technical information we supply you, including those contained in product documents (collectively "Items"), is subject to U.S. government export controls. The export controls may include, among others, those of the Export Administration Regulations of the U.S. Department of Commerce (the "EAR"), which may restrict or require licenses for the export of Items from the United States and their re-export from other countries. You must comply with the EAR and all other applicable laws, regulations, laws, treaties, and agreements relating to the export, re-export, and import of any Item.
10. Miscellaneous. This Agreement is made and entered into for the sole protection and benefit of the parties hereto, and no other person or entity shall be a direct or indirect beneficiary of, or shall have any direct or indirect cause of action or claim in connection with this Agreement. The Agreement and performance under it will be governed by the laws of the State of California, United States, without reference to choice of law provisions, and all actions brought to enforce or interpret the Agreement and any all disputes hereunder or in connection herewith, including any negotiations relating thereto, shall be heard exclusively in the state and federal courts located in San Diego, California, which courts have exclusive jurisdiction over all disputes relating hereto. The U.N. Convention on Contracts for the International Sale of Goods is hereby expressly excluded. IN THE EVENT ANY REMEDY HEREUNDER IS DETERMINED TO HAVE FAILED OF ITS ESSENTIAL PURPOSE, ALL LIMITATIONS OF LIABILITY AND EXCLUSIONS OF DAMAGES SET FORTH HEREIN SHALL REMAIN IN EFFECT TO THE MAXIMUM ALLOWED BY APPLICABLE LAW. We will not be responsible or liable for failing to perform our obligations under the Agreement to the extent such failure is caused by, or to the extent we cannot perform due to, circumstances beyond our reasonable control, including without limitation acts of God and nature, embargoes, war, acts of war (whether war be declared or not), terrorism, insurrections, riots, civil commotions, strikes, lockouts, or other labor disturbances, government actions, fire, earthquakes, floods, epidemics, pandemics (whether declared or not), and any actions we take to comply with applicable laws, directives, pronouncements or guidelines issued by a governmental entity relating to pandemics, such as quarantines and sheltering in place. In certain situations, we may use our reasonable judgment and apportion Products then available for delivery fairly among our customers, or may terminate your order without liability to you. Our failure to exercise any rights under the Agreement is not a waiver of our rights to damages for your breach of contract and is not a waiver of any subsequent breach. If any provision or part of the Agreement is found by any court of competent jurisdiction to be invalid or unenforceable, such invalidity or unenforceability will not affect the other provisions of the Agreement. This Agreement binds the parties' successors and permitted assigns. Headings are for convenience only and shall not be used in the interpretation of these Terms. Any notice or communication required or permitted under these Terms must be in writing and will be deemed received when delivered by commercial courier, or 3 business days after being sent by certified mail, postage prepaid, to a party's specified address. Notices to Verifique must be sent to the attention of its General Counsel. No waiver, consent, modification, amendment or changes to the terms of this Agreement will be binding unless in writing and signed by both parties. Our failure to object to terms contained in any subsequent communication from you is not a waiver or modification of this Agreement.

Fentanyl Safety

Testing unknown substances for fentanyl and other powerful drugs is inherently dangerous. Fentanyl is 50-100 times more powerful than morphine, and as little as 2mg (2 grains of salt) is considered a lethal dose. During handling and testing, fentanyl can be absorbed into the body by inadvertent means, including incidental oral ingestion, contact with mucous membranes, inhalation, or absorption through broken or unbroken skin.

In most cases, unknown substances that may contain fentanyl or other dangerous drugs should be reported to law enforcement for processing and safe disposal.

The Verifique Fentanyl+ Test Kit should be a last resort option for users who are not comfortable with involving law enforcement in the analysis and disposal of suspected drug samples.

Users who choose to deploy this product must understand the risks posed by testing unknown substances for fentanyl and prepare themselves accordingly.

According to the US Drug Enforcement Administration, first responders who may encounter, test and transport fentanyl-related substances must adhere to the following best practices:

- Users must wear Personal Protective Equipment, including nitrile gloves, a fit-tested N95 or similar respirator mask, safety goggles, long sleeves.
- Users must immediately wash skin with soap and water for 15 minutes if they accidentally contact the sample.
- Users must be familiar with the indicators of a potential opioid overdose.
- Users should process samples with a partner who can contact EMS immediately if overdose symptoms are present.
- Users should have impermeable, air- and water-tight containers prepared to store the substance for transport and disposal.

The Verifique Fentanyl+ Test Kit should only be used on small quantity samples, less than 1 gram in powder or tablet form. For samples larger than 1 gram, the user must contact local authorities (law enforcement, poison control) for proper disposal.

Introduction

This test is designed to provide an alternative tool for parents, small business owners, and friends who are concerned for the safety and well-being of those around them, and want a tool that provides certainty and clarity, without involving law enforcement.

The Verifique Fentanyl+ Test Kit is a simple, single-use test kit that is designed for fentanyl detection. The test can be used to detect fentanyl in any kind of sample, including pills, powders, vape pens, surfaces, etc. The test is designed to capture a broad spectrum of fentanyl analogues and will also produce a positive result for any other cyclic amine narcotic class, including amphetamines, synthetic opioids, and many others.

The Verifique Fentanyl+ Test Kit is designed specifically for identifying dangerous narcotics encountered in small bulk quantities in the home and in the workplace. If the test produces a positive result, the user should presume that the sample contains a dangerous narcotic. Following a positive result, the user must dispose of the sample if they can do so safely or consult a HAZMAT specialist who can dispose of the sample.

The Verifique Fentanyl+ Test Kit cannot provide information to inform the consumption of narcotics. The test is not capable of distinguishing any particular narcotic from another and is not capable of testing to a sensitivity that can suggest any substance is safe. The Verifique Fentanyl+ Test Kit is ineffective for drug checking, and it cannot be used as a harm reduction tool.

The test consists of two separate pieces, a test pen and a test card, that come sealed in air- and water-proof packaging. The test pen is used to collect your sample, and the test card is used to conduct your test. The entire testing process takes less than 20 seconds to produce a result.

The solvent and reagents used in Verifique's products are non-toxic and non-hazardous. Although there is no harm posed by the reagents in Verifique test, it is recommended that users wear gloves, eyewear, long sleeves, and a respirator mask to protect themselves from potential exposure to the sample they are testing.

How the Test Works

Verifique's test is designed to detect a broad array of fentanyl analogues and other narcotics of abuse. The test will presumptively check if these narcotics are present in the portion of the sample that is tested. This means that a positive test result indicates that it is presumptively likely that at least one of the target compounds is present in the sample, in a detectable quantity.

This test cannot be used to discern which narcotic is present in the sample, or how many different narcotics may be present. The test will not show how much of the test target is present, how it is distributed across the sample, or how strong the sample is.

Presumptive tests are not designed to give certain results and cannot replace a full lab analysis of your sample. A presumptive test cannot be used to assert that substances are safe and cannot be used to assert that substances are illegal.

If you get a:

- **Positive Result** - It can be presumed that fentanyl or another dangerous narcotic is present in a detectable volume in the test sample. The sample must be disposed of accordingly.
- **No Result** - Fentanyl or another dangerous narcotic cannot be identified in a detectable volume, so it cannot be presumed to be present. In the case of a negative, it is possible that the test target may not be present, may be present in an undetectable volume, or that it may be present and may be undetectable for another reason (a false negative result).

What the Test Detects

Verifique's Fentanyl+ Test is a broad spectrum test, meaning a number of different narcotics can trigger the same positive result. Some examples of the test compounds that will be detected are categorized below. The test is likely to capture the below classes of narcotics, and other, similar compounds that may not be listed.

Fentanyl Class Narcotics

- Fentanyl Hydrochloride
- Methoxyacetyl Fentanyl HCl
- Fentanyl Citrate
- Furanyl Fentanyl HCl
- 2-fluoro-ortho Fentanyl
- Carfentanil HCl
- Lofentanil HCl
- Remifentanil Oxalate
- Sufentanil Oxalate

Synthetic Opioid Class Narcotics

- Heroin
- Meperidine

Amphetamine Class Narcotics

- Methamphetamine HCl
- MDMA HCl
- D-Amphetamine HCl
- Ephedrine
- Pseudoephedrine

Other Cyclic Amine Class Narcotics

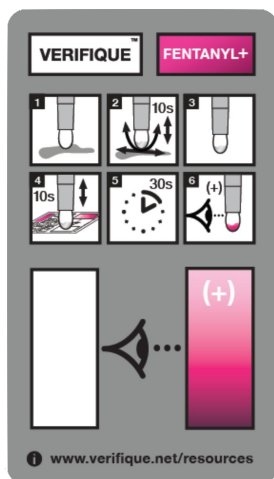
- Phencyclidine (PCP)
- Methylphenidate (Ritalin)
- Chlorpromazine HCl (Thorazine)

Contents

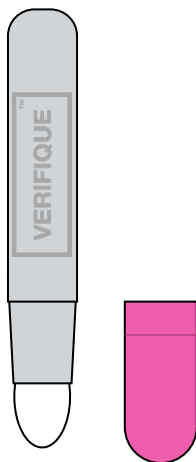
The Verifique Fentanyl+ Test Kit consists of three pieces, delivered in a single, sealed sachet.

- 1 x pre-treated VF Test Pen
- 1 x reagent-treated dry paper VF Test Card
- 1 x VF Results Record Card

Test Card



Test Pen



Record Card

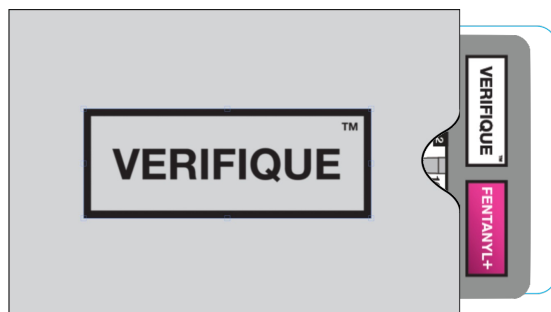
NAME: _____

CITY: _____

DATE: _____

RESULT: _____

Protective Card Sleeve

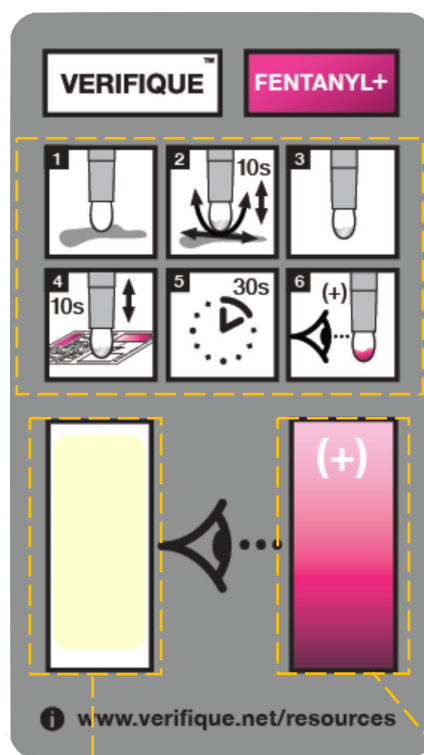


The VF Test Card and VF Results Record Card are delivered together in a protective sleeve.

Test Card

The Verifique Fentanyl+ Test Card is a 3.5" x 2" paper card that consists of three separate sections. The top right corner of the test card is printed with the name of the test.

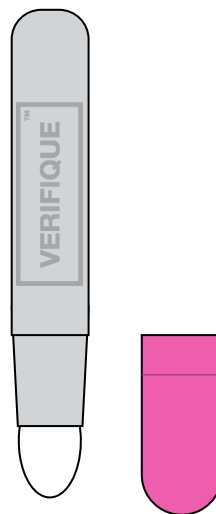
- 1. Instructions:** The five panels at the top of the card have instructions for conducting the test.
- 2. Test Zone:** This is the site of the reagent that will be used in conducting the test.
- 3. Color Reference Panel:** This color panel provides a quick reference guide for the color patterns that are indicative of positive and negative results. You are looking for the development of a distinct dark red color as an indication of a positive result.



Test Pen

The Verifique Fentanyl+ Test Pen is a plastic pen case that is used to hold the cotton tip used in sample collection. The cotton tip is pre-wetted with a natural solvent to help collect your sample.

To prepare the Pen for testing, simply remove the cap. The tip of the Pen should be damp.



Record Card

The Record Card can be used to take notes about the results of your test upon completion. Fill out the fields on the card as necessary for your personal records. You may also consider taking notes in the blank space at the bottom of the card, and taking photographic record of the results of your test.

NAME: _____

CITY: _____

DATE: _____

RESULT: _____

Preparing for the Test

Users who are preparing for the test should familiarize themselves with the risks posed by testing for fentanyl, as indicated in the Fentanyl Safety section of this manual (page 4).

The user should ensure that they are properly equipped with the recommended PPE — nitrile gloves, properly-fitted respirator mask, long sleeves, and eyewear.

The test should be conducted with another person present who can identify symptoms of opioid exposure, and can respond in case of emergency. If possible, the tester should have naloxone on-site, in case of a potential overdose.

The tester should also prepare their environment for the test, ensuring that the room is well lit and well ventilated, but that there is not moving air that could disrupt the sample.

The user should prepare a plan, and the appropriate tools, for safe disposal of the test sample, and cleanup of the test site.

General Procedure

When residue containing fentanyl or another detectable narcotic is combined with the dry reagent zone on the test card, the reagent will produce a pink color change.

Depending on the nature of the sample, this color change may occur on the test pen, on the test card, or on both surfaces. For this reason, it is essential that you check both the pen and card for indication of color change.

The color development for a positive result should be rapid and will often be permanent. Depending on the sample, the intensity of the pink color could range from weak to very strong, and could range from very light to very dark (appearing purple). If you are unsure of whether the color you are seeing is considered a positive result, consult the color reference panel on the test card.

After a few minutes, the color on the test may fade or change, so it is important to collect results as soon as possible. You may also fill out the fields on the Record Card to note the conditions and results of the test.

Since Verifique's tests rely on a color change, there are a number of factors to consider about the use of the test. The following can result in mistaken readings that are based on human or procedural error, rather than an error with the color chemistry:

- Improper/non-white lighting used in the test procedure
- Partial to full color blindness of the operator
- Highly colored/color-producing samples used in testing (wet or dry paints, dyes, tea leaves, etc.)
- Highly viscous or thick samples used in testing (candle wax, silicone oil, engineering grease, etc.)

Sample Collection

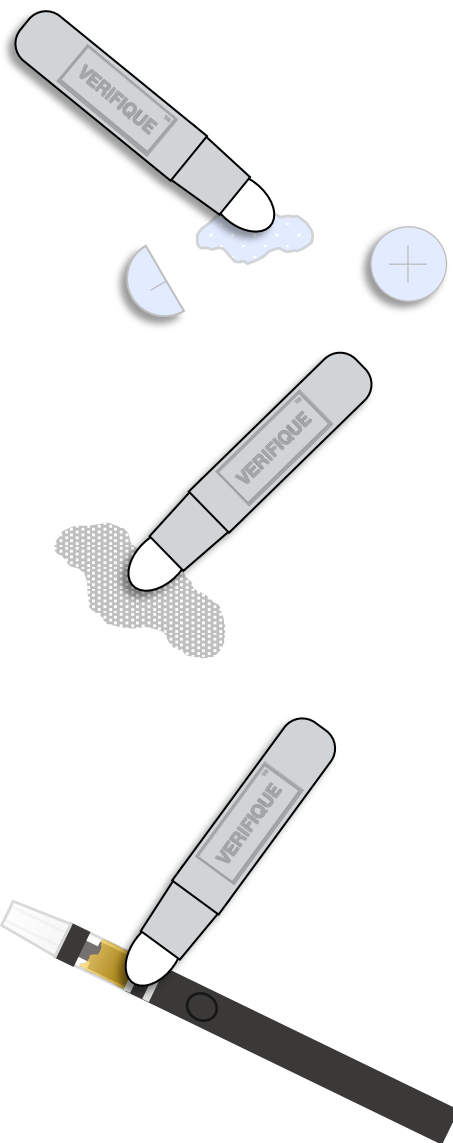
The Verifique Test Pen will be used to collect your sample. You should use the tip of the pen to dab, swab, or rub the surface that you are testing, depending on the nature of the sample. This process should take up to 10 seconds.

In the case that you are testing a powder, or crystalline sample, it is important to collect the sample gently, so as not to disturb it. Vigorous rubbing or dabbing may result in the sample becoming airborne, which increases the risk of incidental inhalation or skin exposure.

You are aiming to collect as much potential residue as possible, and concentrate it on the tip of your pen. If you are testing a visible residue like a powder, or crushed pill, you should be able to see the residue picked up on the pen's tip.

For testing vape pens, if possible, you should dab the tip of the pen into the oil well of the cartridge. If you are unable to access the cartridge, you should aim to swab the surfaces with the most potential residue, the mouthpiece and oil cartridge.

It is important to remember that your test results apply only to the portion of the sample you collected from. A positive or negative result for a portion of the sample cannot be guaranteed across the rest.



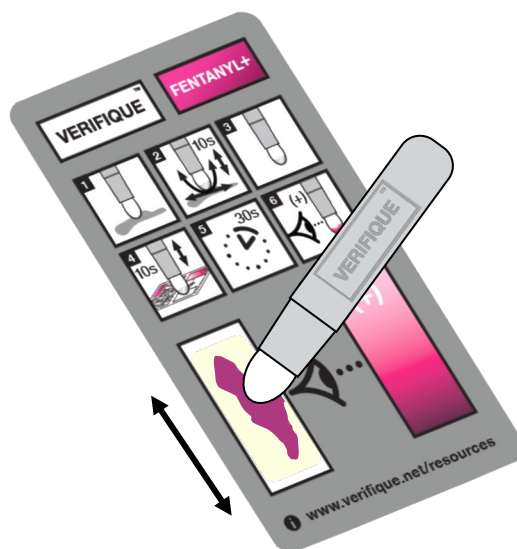
Conducting the Test

Once you have collected your sample, you will combine it with the reagent printed in the reagent zone of the Verifique Test Card. This is done by dabbing the tip of the test pen across the card's reagent zone. This process should take no more than 10 seconds.

If a detectable narcotic was picked up in your sample, the reagent should produce a vibrant pink color. This could happen immediately, or take up to 30 seconds. Be sure to check both the reagent zone and test pen tip for any signs of color development.

If any pink or purple color develops within 30 seconds, the result of the test is **positive**.

If no pink or purple color develops within 30 seconds, the result of the test is **negative**.



After the Test

Following the testing procedure, it is recommended that users take a picture of the test result for reference, both the test card and test pen, as well as the sample itself.

The user may also use the QR code provided in the instruction booklet to access the Verifique Mobile Test Portal on their mobile device. This will allow the user to document their results, and receive a copy by email.

Following the completion of this procedure, the test card, test pen, and sample in question must be disposed of appropriately. Since the test card and test pen do not contain any dangerous or hazardous materials, and do not require any special disposal procedures, they can go in regular garbage. If your sample produced a positive result, it must be disposed of following HAZMAT procedures. If possible, a positive sample should be disposed of by law enforcement or poison control.

If the test was used to collect a sample from a consumable good — i.e. pills, powder, needles, etc. — said item should NOT be consumed, regardless of outcome of the test. If the test was used to collect a sample from a reusable product that users come into direct contact with — i.e. vape pens, pipes, etc. — said items should be cleaned thoroughly with soap and wiped dry prior to use.

If the user is ever unsure about the procedure or result of a test, the test should be re-done. If the user is uncertain about an element of conducting or analyzing the test, and cannot find answers in the reference materials, they should contact a member of Verifique's team with relevant support (photographs, descriptions, test information) if applicable.

Fe

CONTACT US

p: 858.935.8599
e: sales@verifique.net

VERIFIQUE™