

*the voice of your eyes is deeper than all roses*

- E E Cummings -



CHILLOSOPHY

FOOL CCIO LOVEFOOL / LOOKBOOK





The LOVEFOOL Collection captures a romantic yet edgy vibe with flowing fabrics, corset-inspired tops, and ruffled details. Moody jewel tones and soft pastels, like deep blues and dusty pinks, create a dreamy and ethereal mood, catering to those with a whimsical heart, who embrace the beauty of romance and possess a fun-loving, dreamy nature. The garments are designed to transport the wearer into a world of enchantment and self-expression, where the delicate balance between romance and edginess is celebrated.







*"I loved her against reason, against promise, against peace, against hope, against happiness, against all discouragement that could be."*  
Charles Dickens, Great Expectations





Black Satin & Ivory Tulle

# Aurora



## Satin Bodice & Tulle Dress



Embrace enchantment with this beautiful black and ivory satin and tulle garment. Adjustable shoulder straps, textured yoke, and romantic ruffles add elegance to this alluring ensemble

₹16,999



# Belle

## Bodice Dress



*This dreamy ensemble gives a modern twist to the Victorian era with a denim yoke bodice, puffy sleeves and voluminous skirt. The denim bodice, tailored to perfection with intricate lace details and delicate floral motifs adorn the sleeves, adding a touch of whimsy and nature's beauty.*



Denim & Pink Floral Cotton Linen  
White Cotton & Black Floral Cotton Linen

₹16,900







Denim & Beige Floral Cotton Linen / Denim & Beige Cotton Linen

₹ 16,900







Indulge in the undeniable charm of our red floral dress with cross tie and lace embellishment. This enchanting ensemble seamlessly blends bold femininity with delicate details, creating a truly unforgettable look.



 Red Floral Soft Modal

₹14,999

# Eva



  
Flowy Dreamy Dress





*I will love you recklessly,  
Without words or empty phrases.  
I will love with blazing truth  
And hopeless defiance and  
Unapologetic beauty.  
I will love you forever and even still when  
forever runs out.*



# Ivy

CHILLOSOPHY



## Floral Pleated Dress

₹20,999

*The printed floral georgette mini pleated dress is a delightful and charming piece, perfect for those with a romantic and whimsical style. Made from lightweight fabric, it drapes elegantly and offers a graceful flow as you move. The feminine bodice cut accentuates your curves, creating an hourglass figure and a graceful silhouette.*



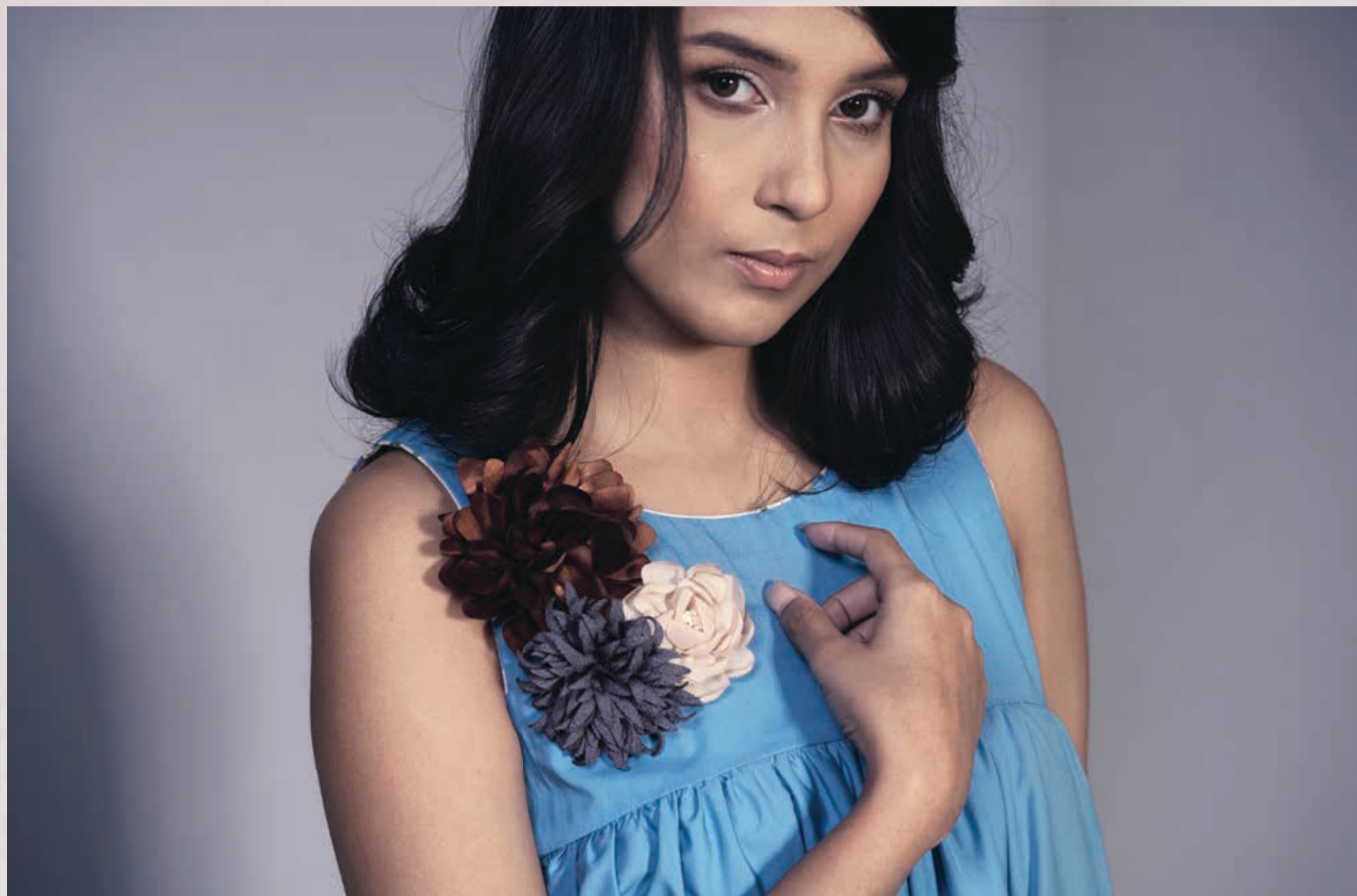
*Ivory Delicate Floral Print Georgette*

*Black Delicate Floral Print Georgette*



# Esther

*This multi-layered long maxi dress exudes timeless elegance with vintage scallop details at the bottom, adorned with floral brooches. Perfect for special occasions, it combines grace, charm, and a touch of glamour in one stunning ensemble.*



CHILLOSOPHY

CCIO LOVEFOOL / LOOKBOOK

## Maxi Dress



Sky Blue / Yellow / Electric Green / White with Gardenia Print in Poplin

₹16,666



# Lily Rose

*This poplin shirt features a front tie belt and a gardenia print on the bodice. Its polished fabric exudes chicness, while the tie belt adds a feminine touch and defines the waist. With its whimsical gardenia print, it's a standout piece for any occasion.*



Belted Shirtdress



White with Gardenia Print in Poplin

₹14,999



*"And hand in hand,  
on the edge of the sand,  
they danced by the light  
of the moon."  
- Edward Lear -*

## Rebel Chic Statement Dress





# Brittany



*In this dress, we've reimagined the opulence of the Victorian era, infusing it with the casual chicness of chambray and the luxurious texture of suede. The result? A fashion revolution that embodies both sophistication and comfort, perfect for those who dare to make a statement.*



Chambray and Tan Suede







# Cara



## Corset-inspired Shirtdress



*This shirtdress combines structure and style, featuring cut-out sleeves, box pleats reinforced with rivets, and tie lace details. This garment celebrates individuality with a touch of rebelliousness, adding an edgy element to your look.*



Blue Musk / Ivory Musk in Bamboo

₹16,900



# Folith Laced Detail Dress

The sleeveless mid-length shirtdress with solid and lace fabric blocking effortlessly blends structure and feminine elegance. Its relaxed straight cut fit complements the overall design, while delicate lace details add

CHILLOSOPHY



CCIO LOVEFOOL / LOOKBOOK



Navy Poplin & Black Lace / Khaki Poplin & Black Lace

₹14,999



## Crochet Detail Linen Dress



Revamp your wardrobe with this charming linen mid-length shirt that emanates a delicate radiance. The shirt features contrasting crochet flower accents gracefully adorning the shoulders, adding a touch of whimsy to your ensemble.

# Flora



Ivory Cream / Yellow / Grey Linen with Navy Crochet Detail

₹11,499





*Step into a world of dreamy summer sophistication with this tailored, belted mid-length shirt. Its vintage ivory lace and four satin-lined front pockets add an enchanting touch. A must-have for the fashion-forward, pair it with matching trousers for a smart yet ethereal vibe.*



# Vintage Print Co-ords



CHILLOSOPHY

CC10 | LOVE-FOOL | LOOKBOOK



Olive Vintage Print in Poplin & Satin

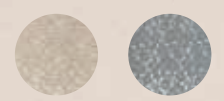
₹12,900 (top) + ₹9,999 (trousers)

# Jane & Austen





# Vintage Lace Coords



Ivory Lace Vintage / Blue Lace Vintage with Satin

₹12,900 (top) + ₹9,999 (trousers)



# Celia



Navy Blue Pinstripe in Poplin / Denim

₹12,999



## Kaftan Dress



Introducing our stylish kaftan designed for relaxation and elegance. With a relaxed straight cut, ruffled waistline, V-neckline adorned with lace applique, long sleeves with laced cuffs, and convenient side pockets, this kaftan combines comfort and style effortlessly. Embrace fashion-forward comfort with this must-have addition to your wardrobe.





## Kaftan Dress







*This fanciful and romantic dress features textured yoke detail, flowy sleeves, circular cut ruffles, and a waist-cinching belt with a metal buckle. It is adorned with a handmade floral brooch, adding a touch of romance. Perfect for special occasions, this dress captivates with its magical and ethereal look.*





# Victoria



## Romantic Ruffled Dress



Rose Pink / Dusty Blue

₹16,999





# Elvira



₹12,900

₹12,900

## Kaftan Dress

Indulge in holiday bliss with this exquisite soft kaftan, draping beautifully for a relaxed silhouette. The U-shaped ruche detail adds visual interest, while the airy batwing sleeves create a breezy feel, perfect for your tropical escape. Embrace its enchanting allure and experience pure vacation magic.



Navy Blue & White Viscose  
Beige Stripes & White Cotton



# Giselle



CHILLOSOPHY



Sky Blue / Powder Pink Poplin

## Kaftan Dress



CCIO LOVEFOOL / LOOKBOOK

*This comfortable and stylish kaftan drapes beautifully and creates a relaxed silhouette. The U-shaped ruche detail adds a touch of visual interest, while the batwing sleeves provide an airy and breezy feel. Perfect for a dreamy and effortless look, this kaftan is a must-have for any occasion.*

₹11,999





LOVE  
FOOL



*“Were all stars to disappear or die,  
I should learn to look at an empty sky  
And feel its total dark sublime,  
Though this might take me a little time.”*



# Doe



## Tie Back Midi Dress

  Peach / Dark Grey Viscose Linen

*This tie back midi dress is a delightful choice for a fun and vibrant summer look. With a rounded hem top and adjustable shoulder straps, it offers a comfortable and flattering fit. The handmade floral brooch adds a charming touch to complete the ensemble.*







Artichoke Green / Soft Blue with Orange Pinstripes in Poplin

₹12,999

# Millie



## Long Summer Dress



The backless summer dress, with origami butterfly details and orange/white pinstripe highlights, embodies ethereal elegance. Its bare back symbolizes liberation, while the vibrant colors evoke sun-kissed horizons and carefree moments by the shore.





Orange / Beige / Deep Blue / Light Blue / Red Stripes in



## Flare Cut Shirt Dress



*This comfy shirt dress has an oversized collar and cascading hemline for drama. It boasts intricate lace details and lining, adding elegance and femininity.*

₹13,999

# Penny







## Black Sequin Dress

₹19,900

*A sleek, form-fitting long gown in black sequined fabric featuring a captivating waist cutout and elegant side slits, accentuated by striking contrast edge lining.*





Goldola  
ॐ



Black & White Vintage Print

₹16,900



# G



## Pink Floral Print



*A sleek, form-fitting long gown in black sequinned fabric featuring a captivating waist cutout and elegant side slits, accentuated by striking contrast edge lining.*

₹16,900







## Ruched Sleeves Shirdress



*This long shirdress exudes sophistication and style, radiating intelligence. The textured belt accentuates the waistline for a flattering silhouette. The ruched sleeves add modernity and attention to detail, making it a smart and chic choice.*



*Pink Ivory White Floral / Sap Green in Cotton*

₹16,999







# Jerry

## Short Tunic

₹12,600



*Ivory Musk in Bamboo*



*Blue Musk in Bamboo*



*White Musk in Bamboo*



# Jenny

## Long Tunic

₹13,900



*The white tunic showcases an elegant scalloped hemline that enhances its flattering flare cut. With its delicate charm and undeniable romance, the scalloped hemline infuses a gentle touch of playfulness and whimsy that perfectly complements our Lovefool aesthetic.*





## Victorian-inspired Ensemble

*The captivating shirt features exaggerated collars that draw attention to the wearer's neckline. Delicate black lace decorates the seams, creating a charming contrast against the refined fabric. Snap buttons provide a seamless dressing experience. Combine it with our Eliot Suspender Pants for a captivating Victorian-inspired ensemble.*





### Long Collar Shirt

₹12,999



Ivory Musk / Blue Musk / White Musk / White in Bamboo

₹12,999



### Suspender Pants

₹13,999



Black / Maroon / Navy / Beige European Stretch Crepe

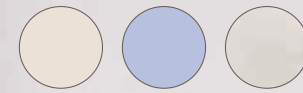
₹13,999





# Cynthia

## Ruffled Shirt



Ivory Musk / Blue Musk / White Musk in Bamboo

₹12,900



# Naomi

## Sequin Shorts



The shirt in Bamboo fabric is designed with a looser fit, ensuring comfort and ease of movement with delicate ruffles cascading gracefully to create a feminine and romantic look. For a truly remarkable and fashionable edgy statement, combine it with our exquisitely tailored sequined high-waisted Naomi Short pants.

₹11,999



# Rachel



White Poplin

₹11,999

## Leaf Applique Shirt



Embrace summer vibes with our crisp white shirt featuring handcrafted leaf appliques and lace embellishment for an elegant touch. The loose fit ensures comfort while exuding a dreamy aesthetic.





## Straight Cut Trousers



*These sophisticated solid straight cut trousers are a timeless addition to your capsule wardrobe. Their clean and sleek design makes them perfect to pair with a crisp white shirt for a classic and polished look.*



Red Cotton denim

₹9,999



# Beruda





# Rebecca



*Timeless classic meets artistic flair. This white poplin shirtdress fuses classic style with a touch of vintage charm with meticulously hand painted design on the back, embellished with art deco lace details.*



White Poplin

₹14,900



CHILLOSOPHY

CG10 LOVEFOOL LOOKBOOK

Tailored Blazer & Trousers

Josephine & Jose





Elevate your style with our tailored belted mid-length blazer, adding a stylish edge to your wardrobe. Meticulously crafted, it offers a flattering silhouette and a sophisticated touch perfect for both professional settings and chic social occasions. Pair it With Jose pants for a polished and ultra sleek look.



White / Beige European Stretch Crepe

₹17,900 (blazer) + ₹8,969 (trousers)







## CHQ TEAM

*Creative Director*  
Silky Ahluwalia

*Operations Director*  
Prithi Monga

*Photography*  
Avenoir Creation

*Model*  
Bidisha Bharadwaj

*Make up & Hair*  
Uma Maurya

*Marketing*  
Avantica Chaudhry

*Digital*  
Jacqueline See

# CHILLOSOPHY

Chillosophy was borne out of a personal need to have access to elevated essentials without sacrificing comfort. In 2018, Silky Ahluwalia took a leap of faith and launched into fashion bringing forward her own unique and disruptive view of the industry. Since then Chillosophy has seamlessly (– no pun intended) developed their collections while maintaining their signature minimal patterns, asymmetrical cuts and impeccable hand-woven detailing.

Chillosophy's work today essentially rests in linking the skills of traditional weavers and dyers spread all across India with those of the craftsmen working in the studio. The collective skills they bring is an accumulation of knowledge passed down through many generations. Eventually resulting in garments that defy trends and seasons, and will be handed down to future generations of independent women.

As a design philosophy, Chillosophy believes that fashion is so much more than what is worn. Everything crafted has a story to tell. The designs and ideas come from the history of womanhood, equality and self-actualization. Hand designed and created, the garments amplify the artistic process and embody sustainable fashion.

These pieces are meant to take you on your individual journey, wherever it is that you seek to go.