

CHILLOSOPHY

CREDITS:

Photography / KARTIKEYA MANAN

Model / BIDISHA BHARADWAJ

Make up & hair / UMA MAURYA

Creative direction / SILKY & PRITHI

Shoot location / SOURCES UNLIMITED (DELHI)

Print design / THE DESIGN WALL

Write up / MALLIKA VIEGAS

CONTACT:

W www.chillosophy.in

E chillosophy.in@gmail.com

IG [chillosophy.in](https://www.instagram.com/chillosophy.in)

FB [chillosophy.in](https://www.facebook.com/chillosophy.in)



BOWTIE

CAPSULE COLLECTION CC07 // LOOKBOOK



BOWTIE

Nonchalant yet dangerous, BOWTIE showcases feminine energy in the way it properly deserves. The understated monochromatic palette gives way to sharp elegant tailoring reminiscent of 1920's suited sophistication. Think: prohibition slicked back ponytails and thigh high boots. Fierce and unapologetic, there's more than pleating up these sleeves.

“

I'm just here to cause a little trouble





RUBY

- DRESS -

“Effortless glam slip on baby doll dress with pleating details for the flare and adjustable drawstring with button dangles for the neckline.”

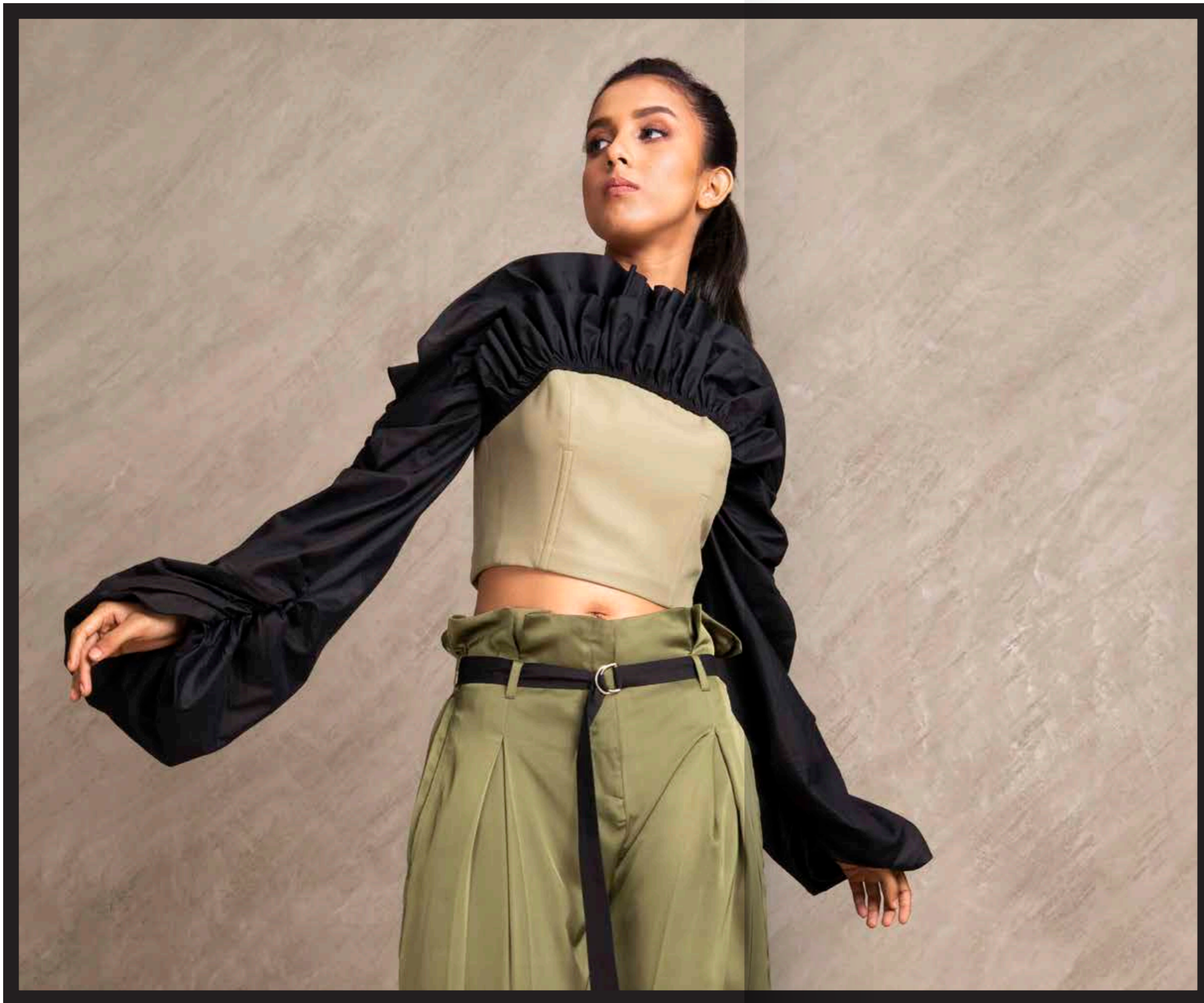
FABRIC / European crepe





“

*The best revenge is to look good.
Always dress like you're going to see
your worst enemy.*



TEMPEST

- CORSET TOP -

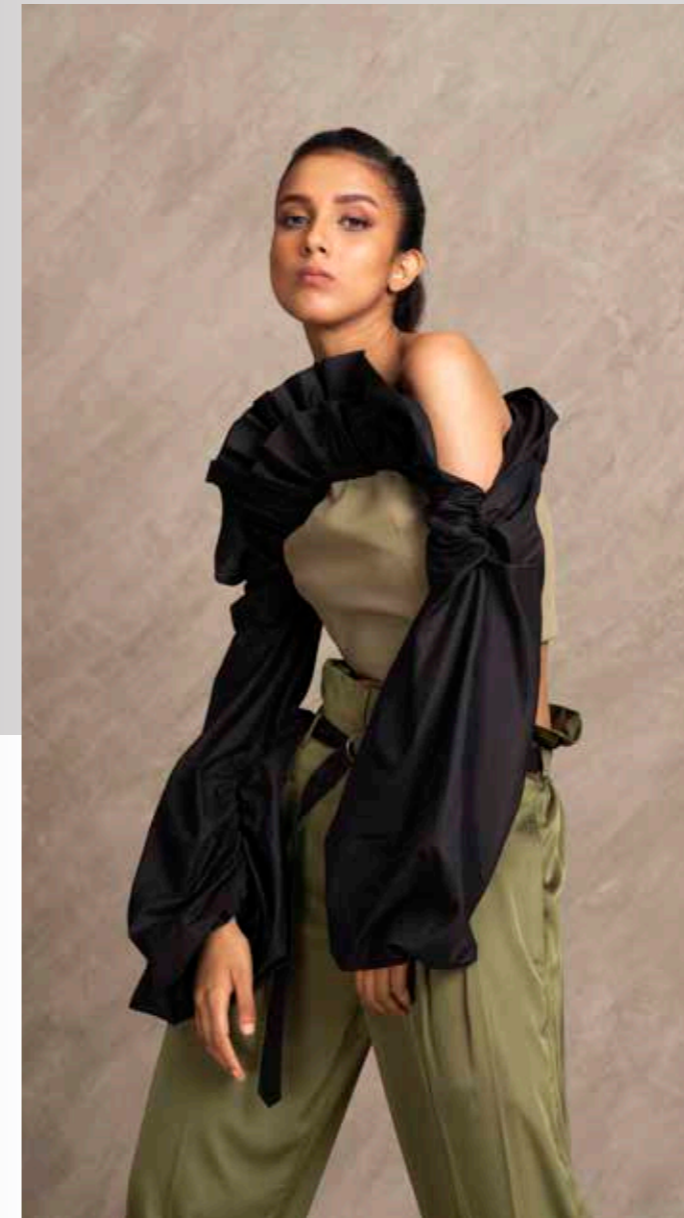
“Seriously chic double layered corset top stitched with black cotton silk ruffles and long sleeves.”

FABRIC / European crepe & cotton silk

“

If you can't be better than your competition, just dress better.

- Anna Wintour -



XENA

TROUSERS

“High waisted pleated pants in Japanese satin with black cotton silk belt around the waist which falls in a shape of a tie featuring black imported ribbons for the tie ups at the bottom.”

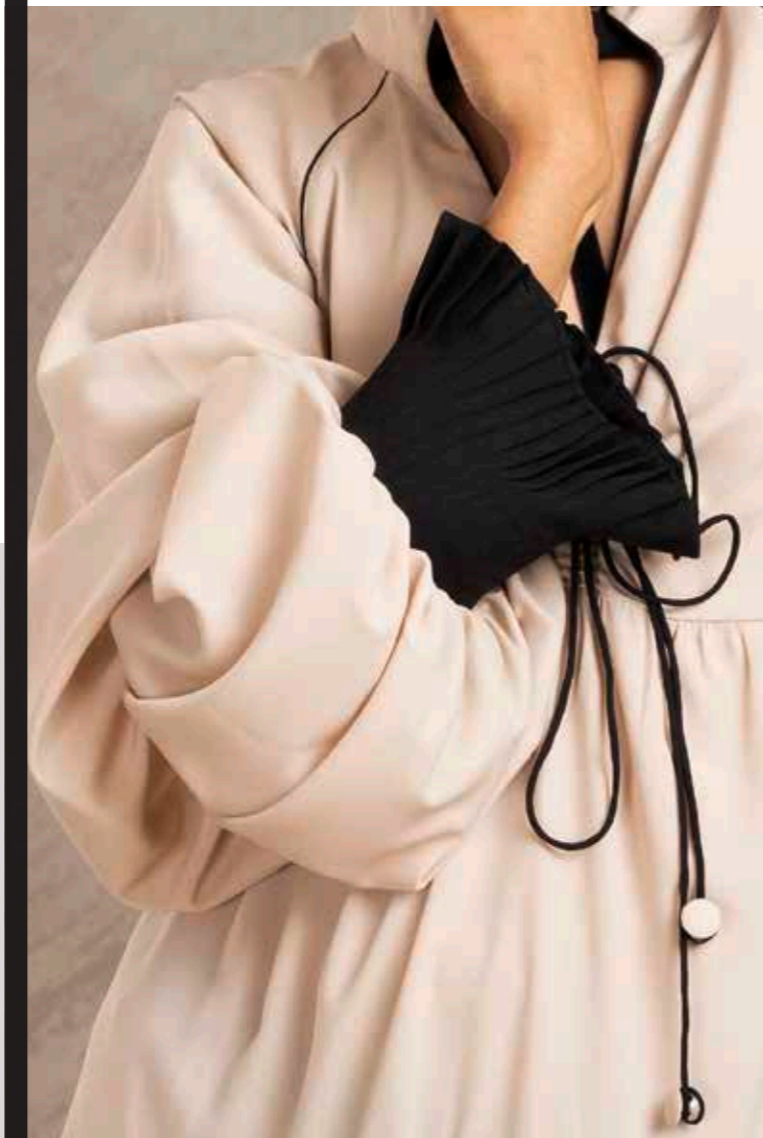
FABRIC / Japanese satin



- DRESS -

“Effortless sassy babydoll slip dress in colour blocking with Raglan puffed sleeves completed with pleating, adjustable drawstring for neckline with button dangles and pleating details on the skirt.”

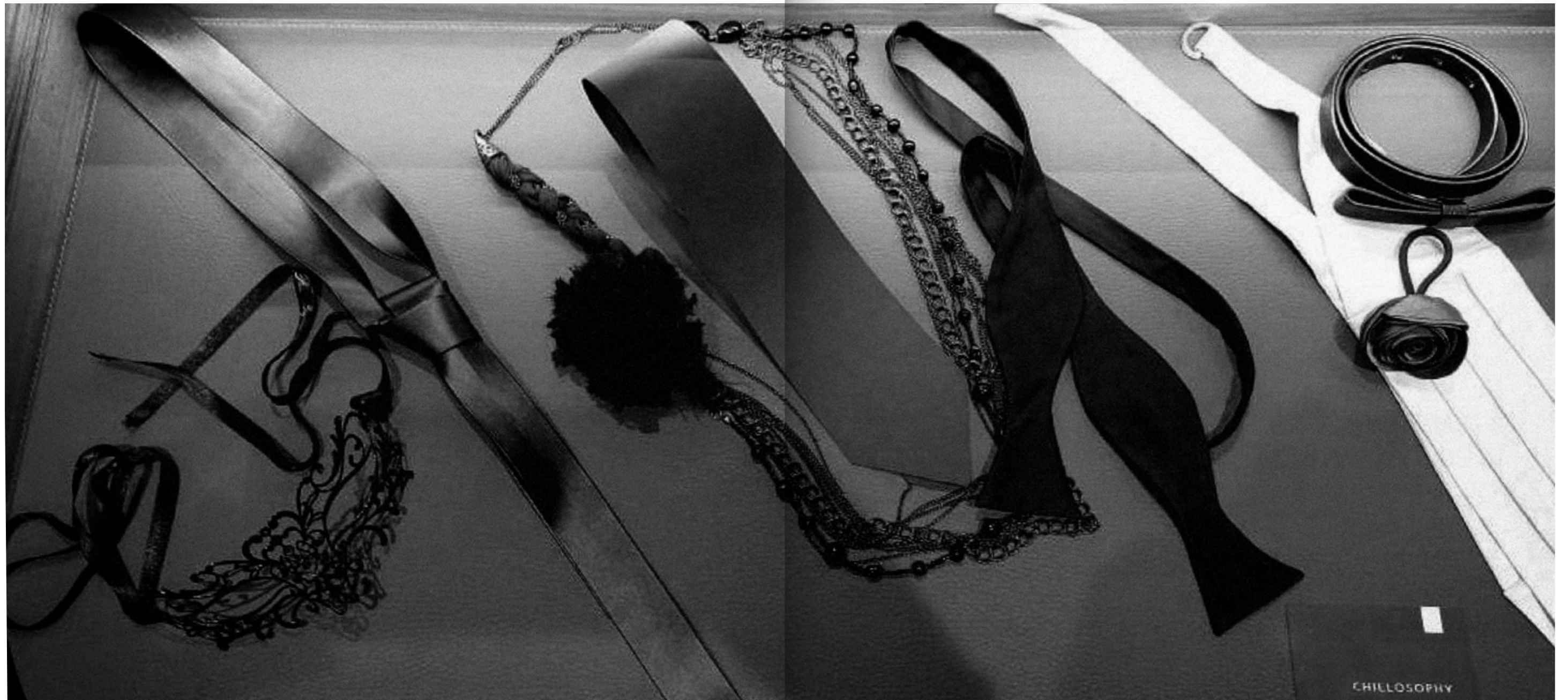
FABRIC / European crepe





“

KNOW YOUR WORTH



**BOWTIE
ACCESSORIES**

“

SOFT AND DANGEROUS

*If someone is cruel to you
because of your soft disposition
and generosity, respond to their poison
with equal parts sweet honey,
equal parts dangerous ferocity.*

- Nikita Gill -



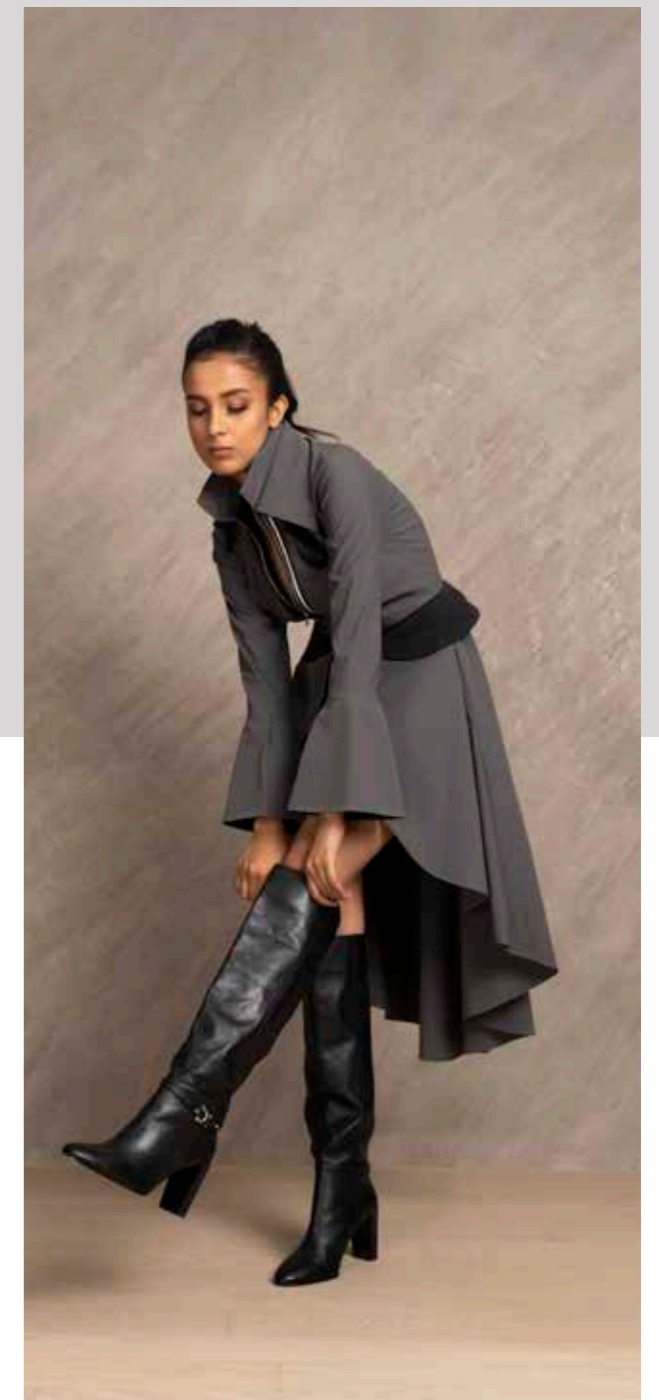
BLACK MAMBA

- TUNIC DRESS -

“Elevate your style with our statement piece, Black Mamba – tunic dress with sharp silhouette, front opening metal zipper, cascading skirt and high double collar detailed with imported lace and quilted satin wings on the waistline.”

FABRIC / Poplin lycra stretch





“

PROVE THEM WRONG

SIDEWINDER

- SKIRT SHORT -

“A skirt-short with deconstructed fold in front and side pockets. Perfect with Black Mamba and high boots.”

FABRIC / European stretch crepe

CHILLOSOPHY



www.chillosophy.in



ACE

- DRESS -

“Fierce up your look with our sharp shoulder power dress accentuated with cord detailing on the shoulder, collar and waist belt and matte gold buttons on the sleeves.”

FABRIC / European crepe





“

*her walk is like a shot of whisky.
neat and strong and full of purpose.
and so many underestimate her punch.*

- JmStorm -



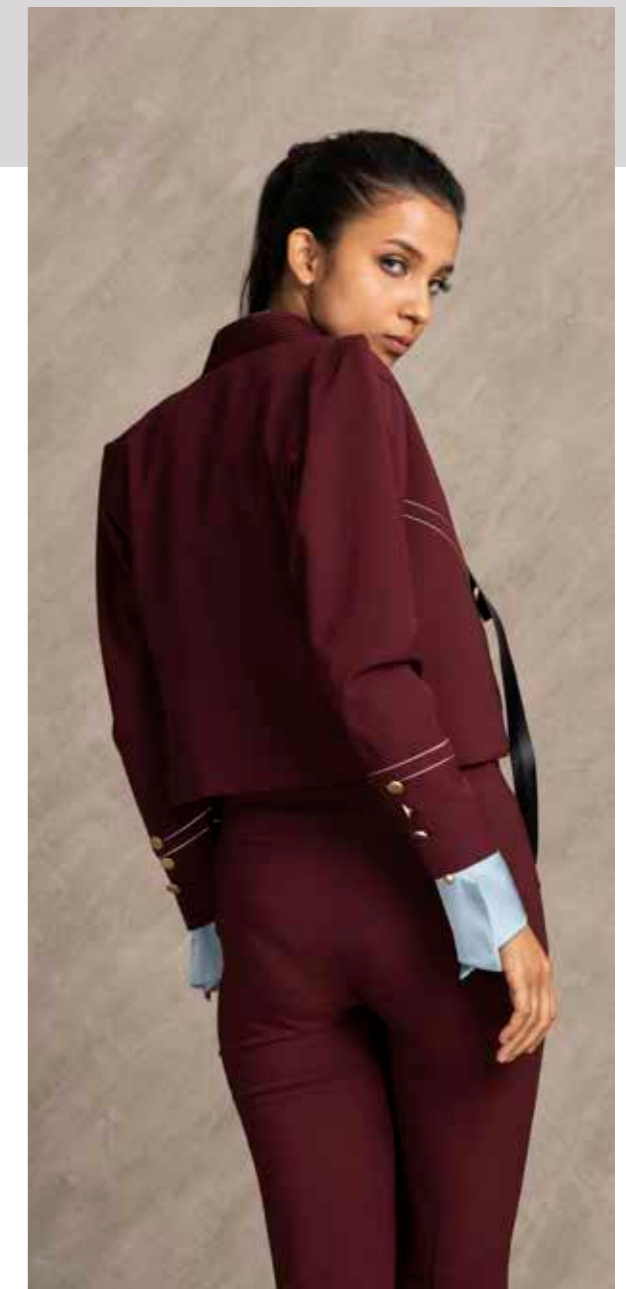
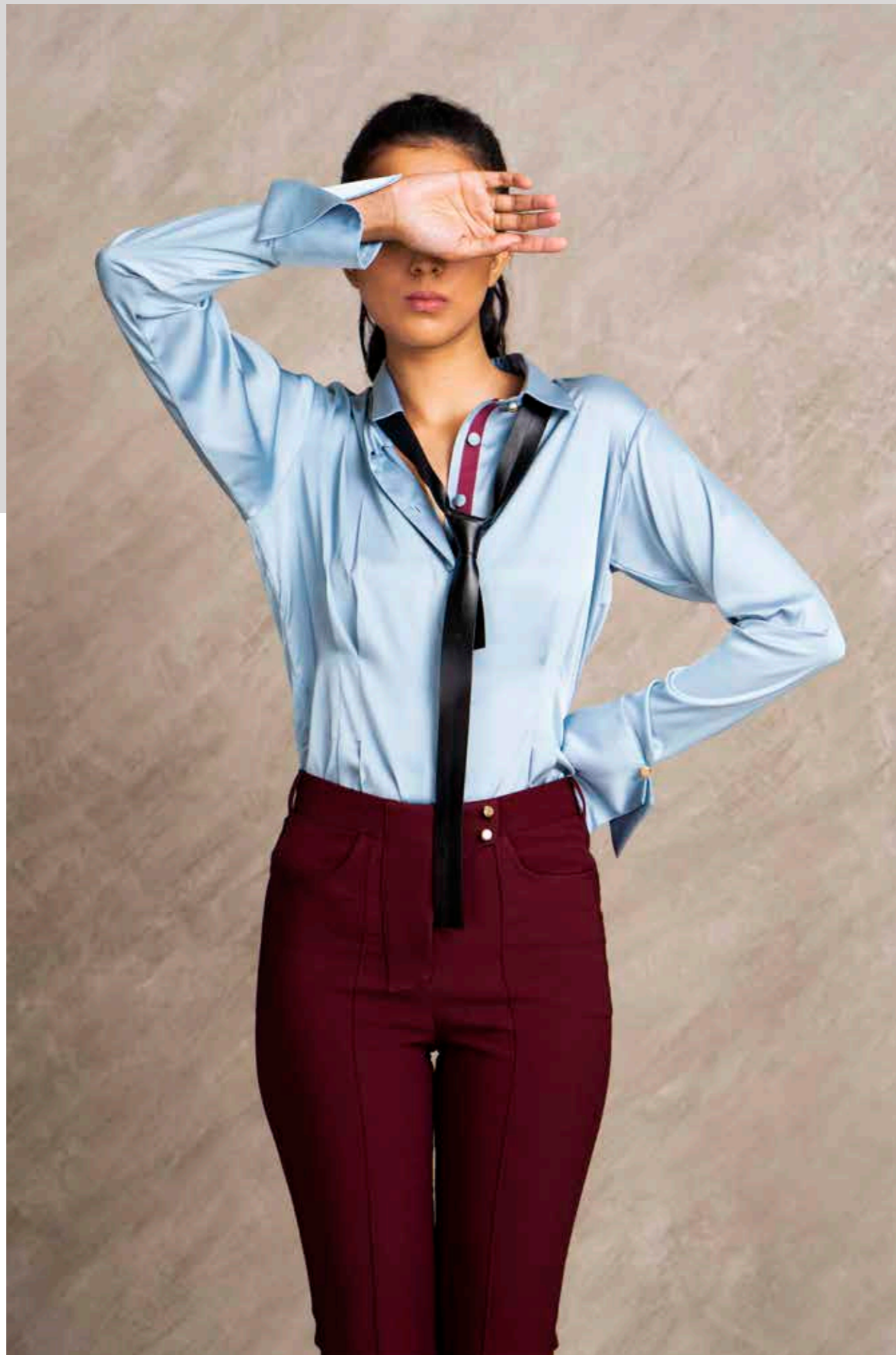
**ROXY****- JACKET -**

“Super sharp tailored short jacket with statement shoulder details for the modern femininity vibe, pleated details on the front with black silk lining, gold buttons and beige satin ribbon tape for finishing.”

TRINITY**- TROUSERS -**

“Slim boot cut pants made in 2-way European stretch crepe fabric with silk facings featuring superior gold buttons and satin ribbon tapes for finishing.”

FABRIC / European crepe



“

For on the point statement outfit,
pair it with ROXY Jacket + TRINITY Pants set

GRACE

SHIRT

“Blue Japanese satin shirt with maroon ribbon tape, gold buttons and broken cuff detailing.”

FABRIC / Japanese satin



- BLOUSE -

“An elegant satin shirt blouse with tuxedo collar detail & fingerless glove detail with loop button featuring stylised and deconstructed buttons in gold and black onyx for added luxe feel.”

FABRIC / European Matte Satin

HARMON

- DRESS -

“Rock in our super soft tan suede skirt dress with detachable wide shoulder straps and big comfortable front pockets.”

FABRIC / Tan Suede

“

“I am rooted but I flow”



“

*They told you not to dance with demons, but
my love, you wear rebellion well.*

- Ariana Dancu -



LOLA

- DRESS -

“Slay your fashion game in our one piece off shoulder dress, impeccably crafted with fabric manipulation on the front and a satin cummerbund detail on the waist, completed with metal zipper at the back from top to bottom for that edgy vibe.”

“

BADASSERY (noun)
*engaging in seemingly impossible activities
and achieving success in a manner that
renders all onlookers completely awestruck.*





RAVEN

- CORSET TOP -

“Spice up your modern attire with our black corset designed with cross tie at the back to hug the figure and adjustable shoulder straps with gold buttons for perfect fit. Game up your style quotient by layering the corset over ASTRID JR shirt and LAGARTHA long skirt.”

FABRIC / Poplin



ASTRID JR

- SHIRT -

“Finely stitched white shirt with broken sleeves details featuring imported tape finishings and gold buttons.”

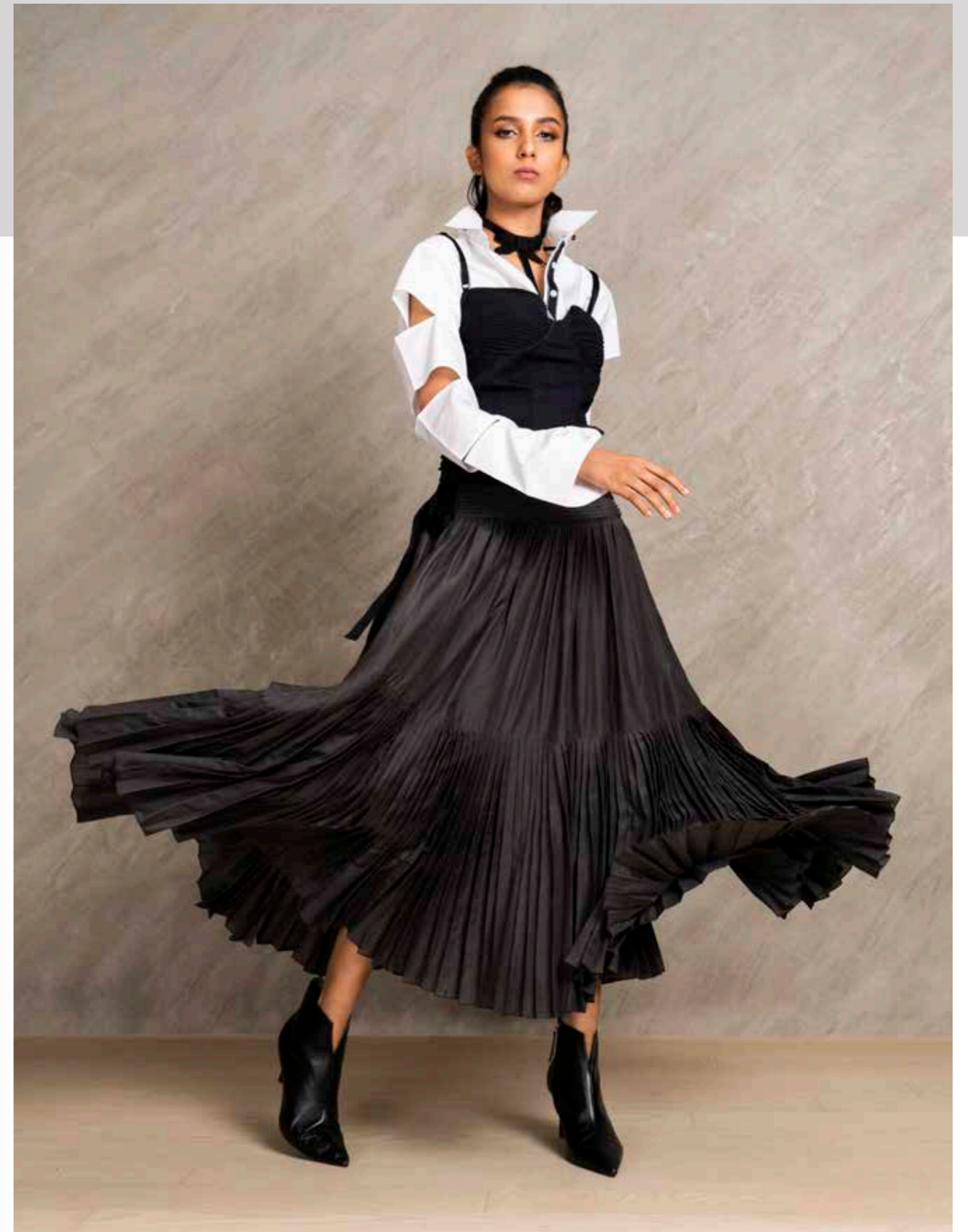
FABRIC / Poplin

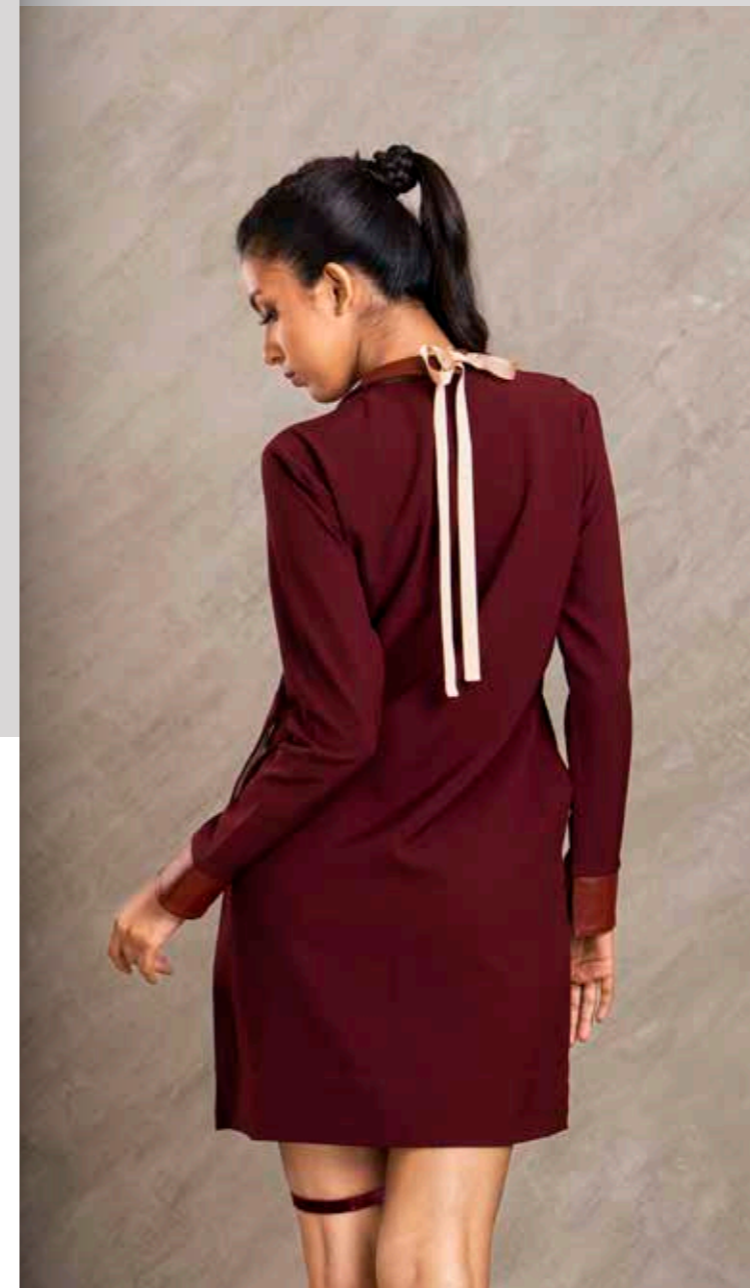
LAGARTHA

LONG SKIRT

“Long skirt with finely stitched pleating details all around featuring pleated cummerbund and black ribbon tie up on the waist; and pleats at the bottom to add a dramatic flair.”

FABRIC / Cotton silk





“

*FIGHT IT, or accept it.
FEAR IT, or control it.*



LUCY

DRESS

“Lucy is a classic and smart dress with leather yoke and detachable leather collar fastened with beige tie up ribbon; luxurious cream satin lining the side pockets and mini slits on the side, finished off with beige lacing on the inside.”

FABRIC / European stretch crepe & leather



- TOP -

“Funk up your look in our structural cross body top created with fabric manipulation. A must have for your modern wardrobe. Pair it with our CROFT pants to add that edgy flair.”

FABRIC / Cotton silk

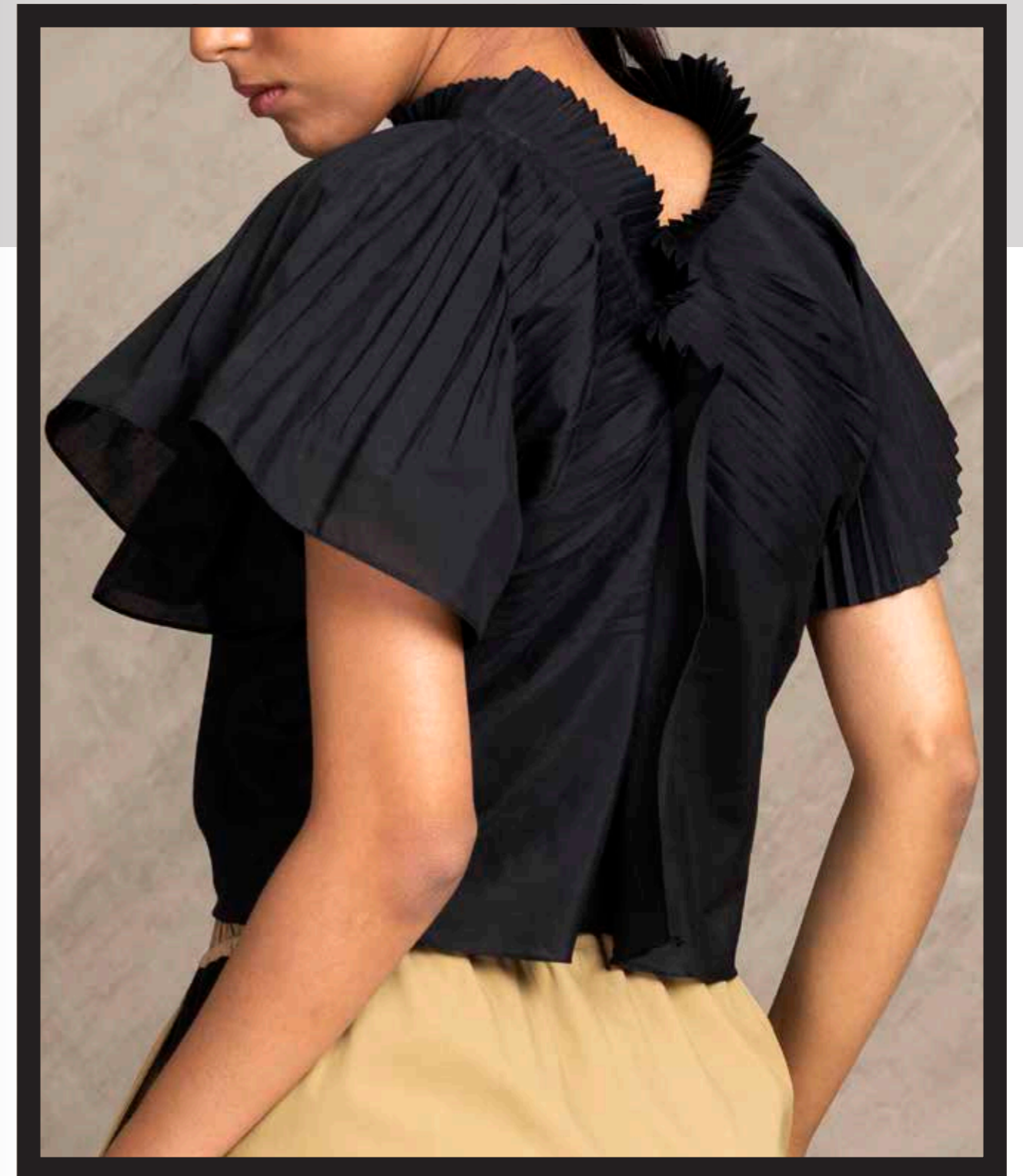




“

“Expose yourself to your deepest fear; after that, fear has no power, and the fear of freedom shrinks and vanishes. You are free.”

- Jim Morrison -



“

To the divine, mischievous spark in you.





RUTH

- BLAZER -

“Game up your style quotient with our stylish cut blazer jacket featuring PVC details on the lapels and the back, elastic belt with metal loops on the side for perfect fit and metal zippers on the end sleeves. This jacket is tailored with Jacquard lining with lion print motifs to unleash your rebel within.”

BADER

- BUSTIER TOP -

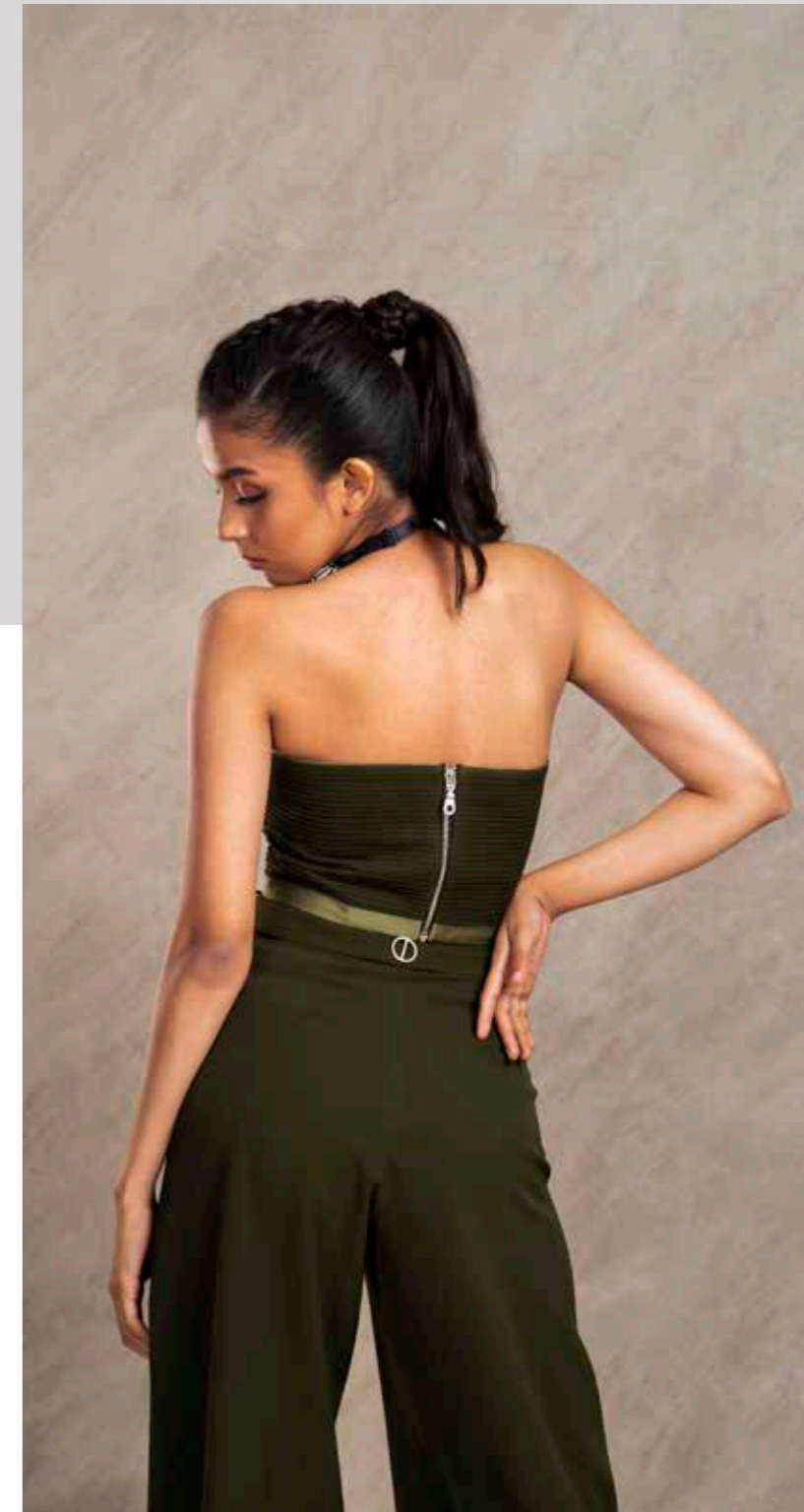
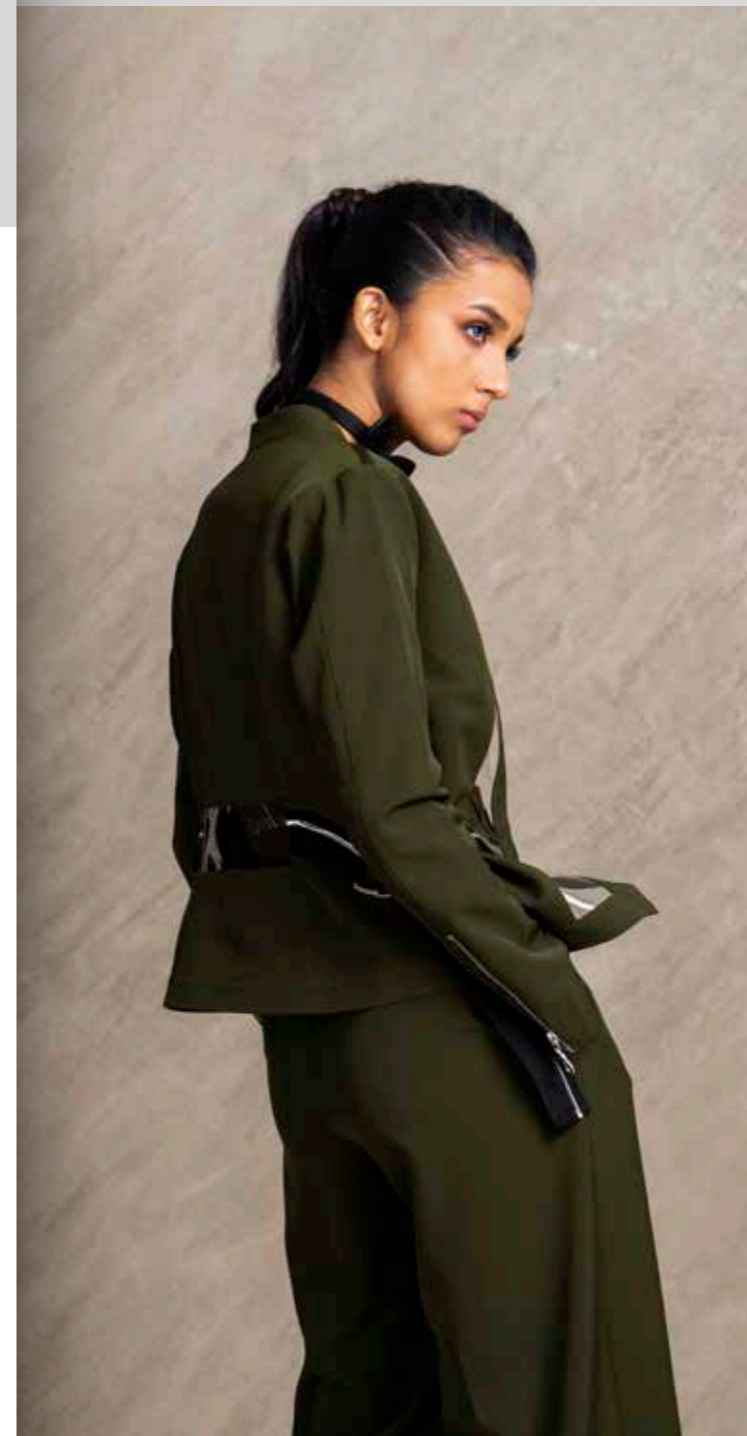
“Bustier top with cord detailing lined throughout with satin facing inside and a metal zipper for back closing.”

GINSBURG

- TROUSERS -

“High waisted flare pants with front closing metal zipper featuring a collar fold detail on the waistband which can be accessorized by a belt; finished off with a gold button at the back.”

FABRIC / European crepe & PVC

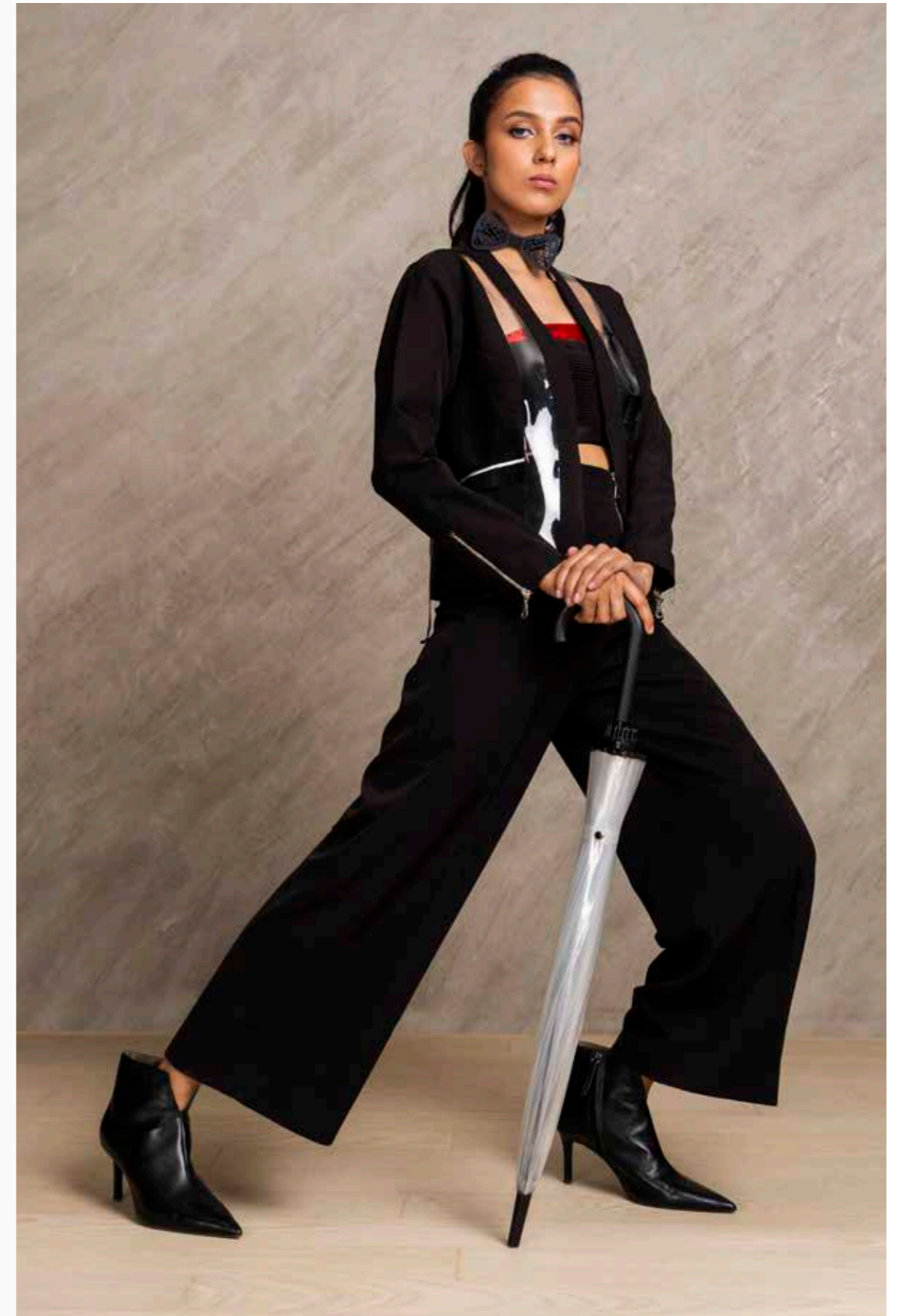


“

*NOT FRAGILE like a flower,
FRAGILE like a BOMB.
- Ruth Bader Ginsburg -*

“

Game up your style quotient with the complete set
RUTH blazer + BADER bustier top + GINSBURG pants



“

EVOLVING INVOLVES ELIMINATING



CHILLOSOPHY



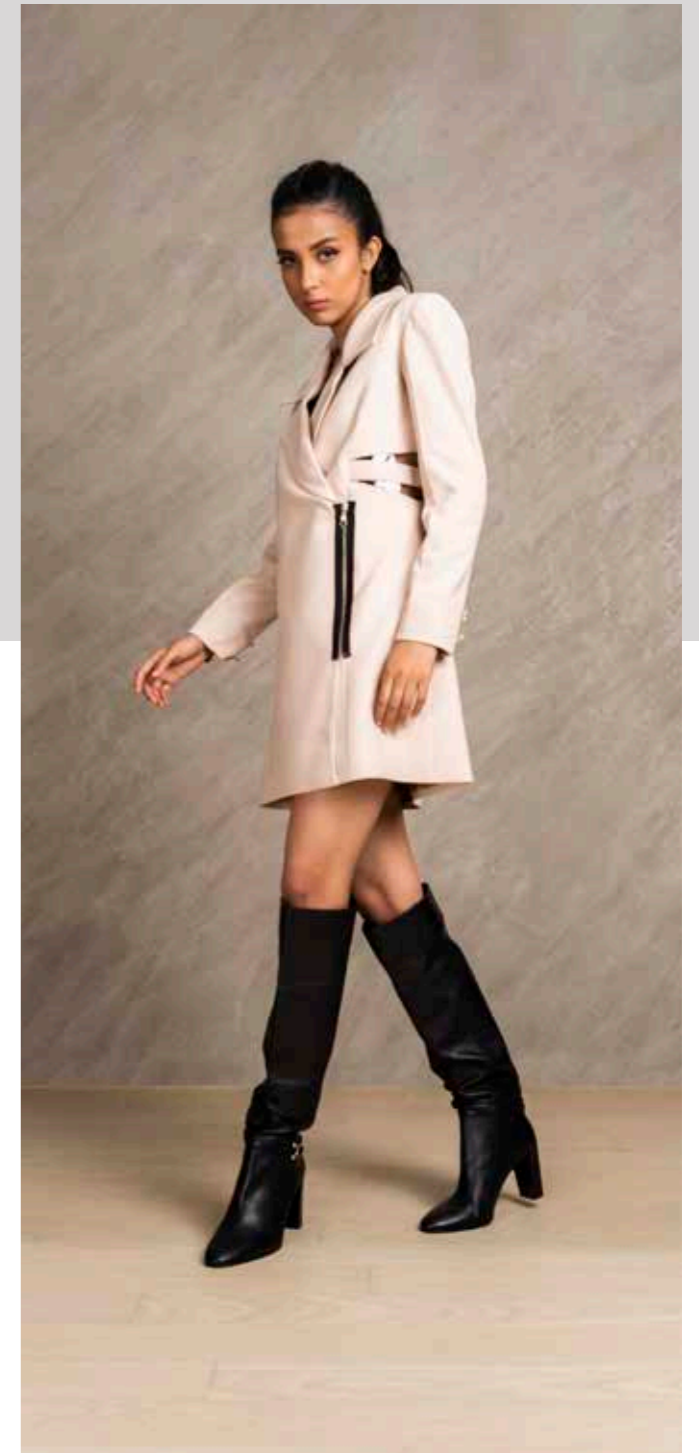
KARTINI

- JACKET DRESS -

“Look super suave in this sharp cut mid-length jacket dress which features unique details such as cutout in PVC on the waist accessorized with high quality buttons on the sleeve and front metal zipper. This day-to-night jacket remains true to our minimalist ethos with experimental details.”

FABRIC / European Crepe





“

You're remembered from the rules you broke.

- Peaky Blinders -



- JACKET -

“Up your streetstyle look with this utility cropped jacket with large flap pockets lined with black satin featuring matte rose gold front buttons and black satin band with metal loops at the back; detailed with elastic waist band and black drawstring for perfect fit.”

FABRIC / Poplin lycra stretch

“

Combine LARA jacket and CROFT pants for a streetstyle co-ord set





CROFT

- TRACK PANTS -

High waisted and relaxed track pants featuring adjustable leather ribbon tie up on the front, black satin lining on one side of the pocket and one side seam detail.

FABRIC / Poplin lycra stretch



POLLY

- BOMBER JACKET -

“This limited edition texturised bomber jacket is an Asian fusion of two different brocade fabric – a Blue Matka Silk Indian Brocade lined with Red Cherry Blossom Satin Silk Japanese Brocade for a super luxe and smooth finish featuring pleated collar, ribbed hem and cuffs.”

FABRIC / Brocade fabric

“

Look stylish yet comfy by pairing POLLY jacket & ADA jogger pants



ADA

- JOGGER PANTS -

“Emerald green jogger pants made in high quality satin with two side pockets and additional front flap pockets with gold buttons featuring front fastening metal zipper with lace tie up and pleated details at the bottom.”

FABRIC / Japanese satin



BONNIE

- SHIRT -

“A tailored design shirt with oversized ruffles on the front and along the sleeves featuring red metal zipper on the shoulder, front opening zip with maroon, blue and khaki stripes and a star button on the collar.”

FABRIC / Poplin

Draw focus to the dramatic silhouette by styling it with CLYDE pants



“

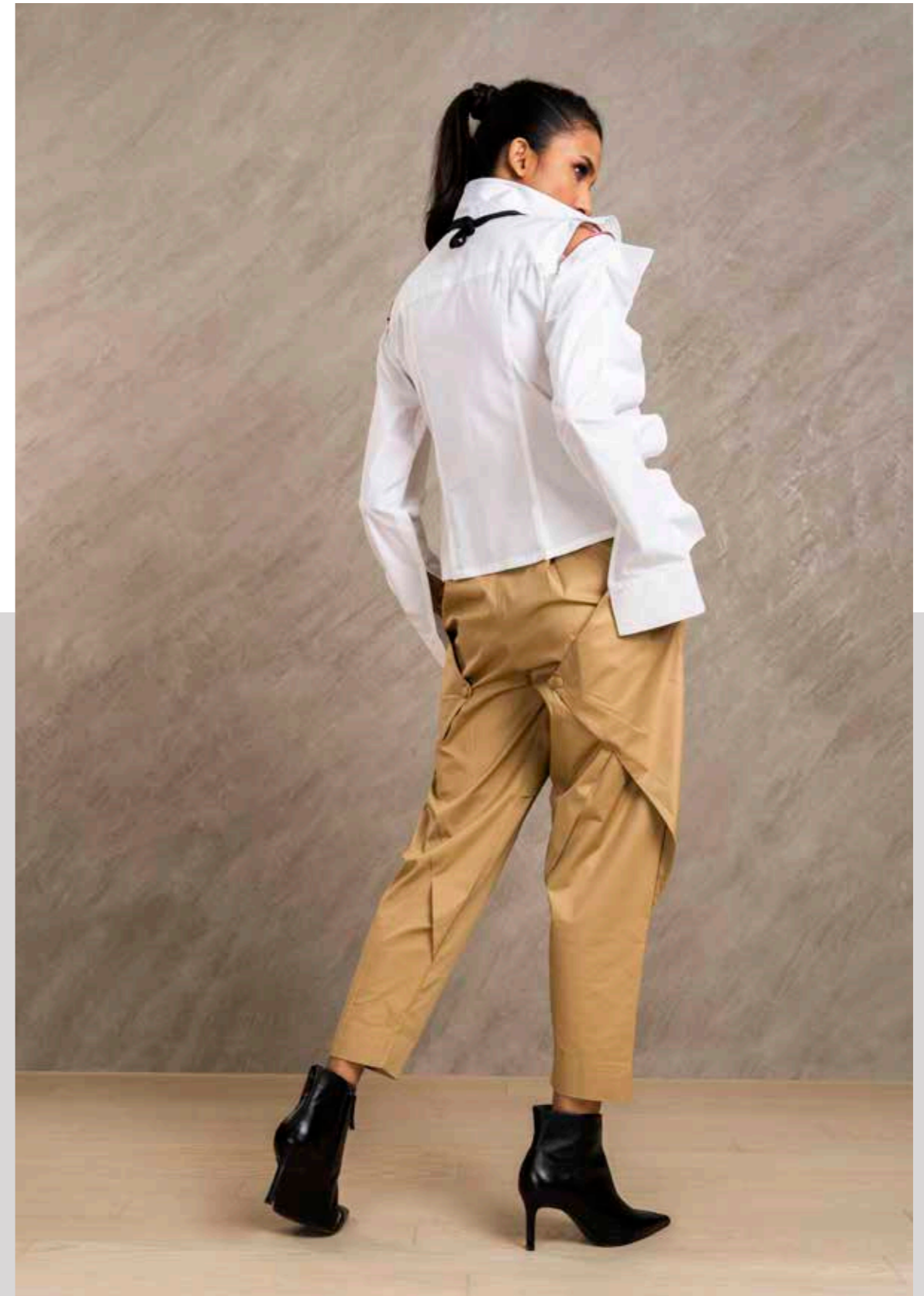
LOVE the lovers. PLAY the players

CLYDE

PANTS

“An extremely comfortable high-waisted pants with deconstructed pleats and fold details held to the back with handmade button fastener.”

FABRIC / Poplin





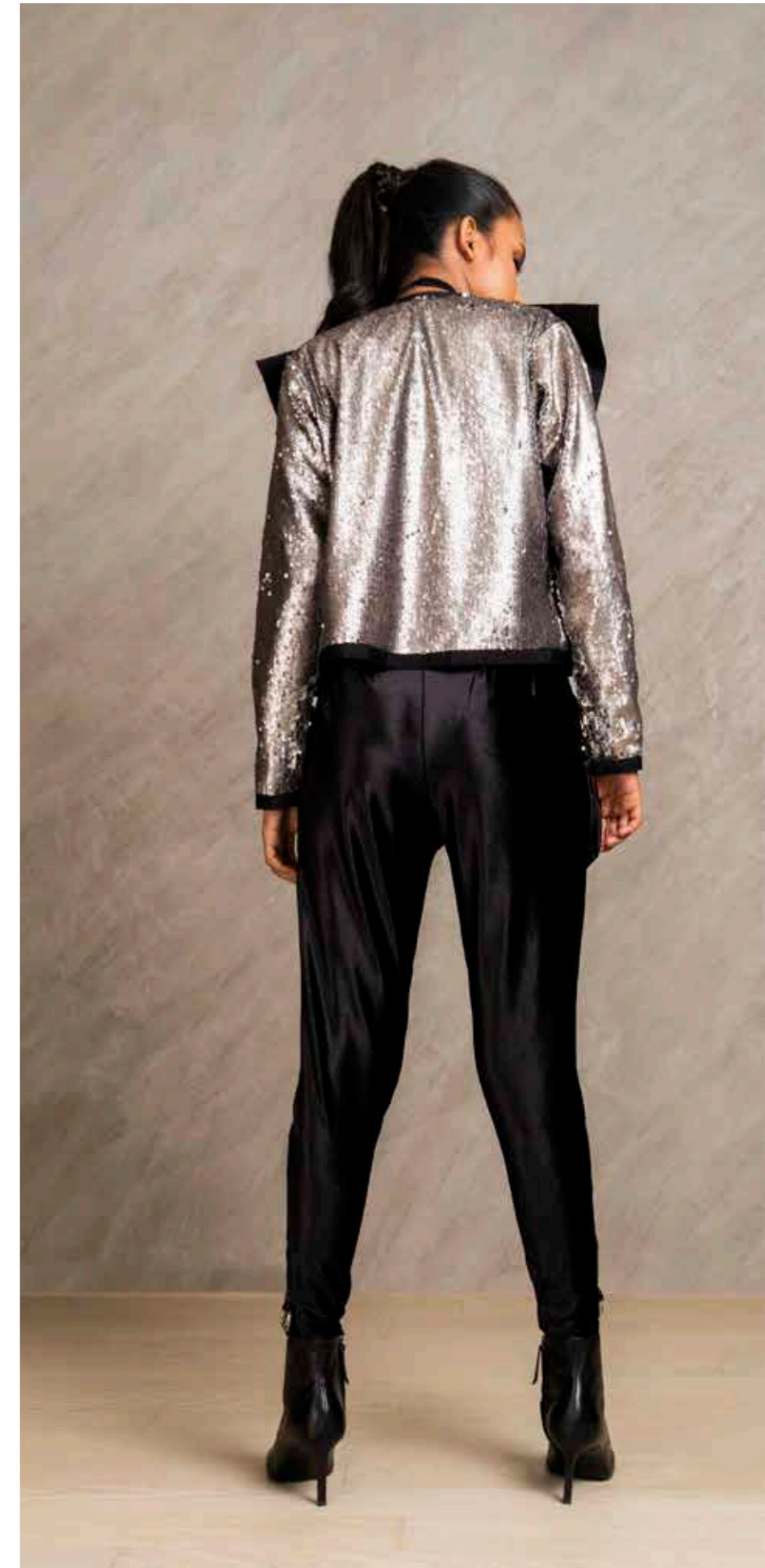
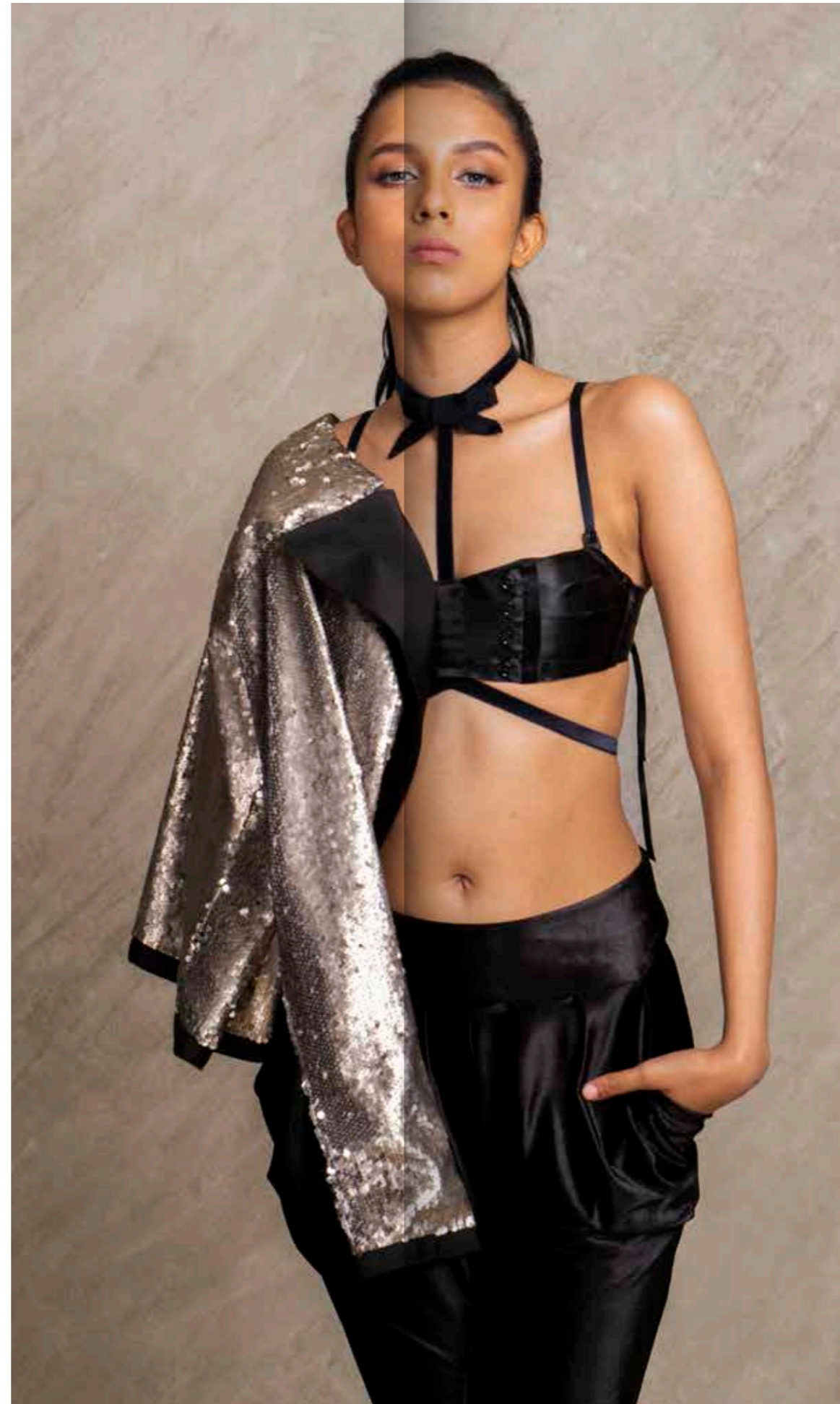
BLAIR

- JACKET -

“Prepare to dazzle in our beautifully crafted sequin jacket with oversized satin lapels featuring adjustable waist fasten hooks in black with imported ribbon finishing and black satin lining inside.”

FABRIC / Two way sequins fabric







IRINA

- CAPE -

“Glam up in our versatile cape with overlap pleated detail with metal loop fastener at the back to adjust to your bust size. The dual tone statement piece is lined with black satin and a hoodie with adjustable elastic string and fastener.”

FABRIC / Satin





- TIGHT PANTS -

“Super comfy yet glamorous tight pants featuring leather ribbon on side seams ending with metal loop details on the ankles and cowl pockets.”

FABRIC / Velvet



LILITH



- BRAND ETHOS -

“WE ARE A MINIMALIST LABEL WITH AN EXPERIMENTAL HEART”

Chillosophy was borne out of a personal need to have access to elevated essentials without sacrificing comfort. In 2018, Silky Ahluwalia took a leap of faith and launched into fashion bringing forward her own unique and disruptive view of the industry. Since then, Chillosophy has seamlessly (— no pun intended) developed their collections while maintaining their signature minimal patterns, asymmetrical cuts and impeccable hand-woven detailing.

Chillosophy's work today essentially rests in linking the skills of traditional weavers and dyers spread all across India with those of the craftsmen working in the studio. The collective skills they bring is an accumulation of knowledge passed down through many generations. Eventually resulting in garments that defy trends and seasons, and will be handed down to future generations of independent women.

As a design philosophy, Chillosophy believes that fashion is so much more than what is worn. Everything crafted has a story to tell. The designs and ideas come from the history of womanhood, equality and self-actualization. Hand designed and created, the garments amplify the artistic process and embody sustainable fashion.

These pieces are meant to take you on your individual journey, wherever it is that you seek to go.