

---

PHOTOGRAPHY  
KARTIKEYA MANAN

MODEL  
PALAK THAKUR

CREATIVE DIRECTION  
SILKY AHLUWALIA

MAKE UP  
PRITHI MONGA

PRINT  
THE DESIGN WALL

WRITE UP  
MALLIKA VIEGAS

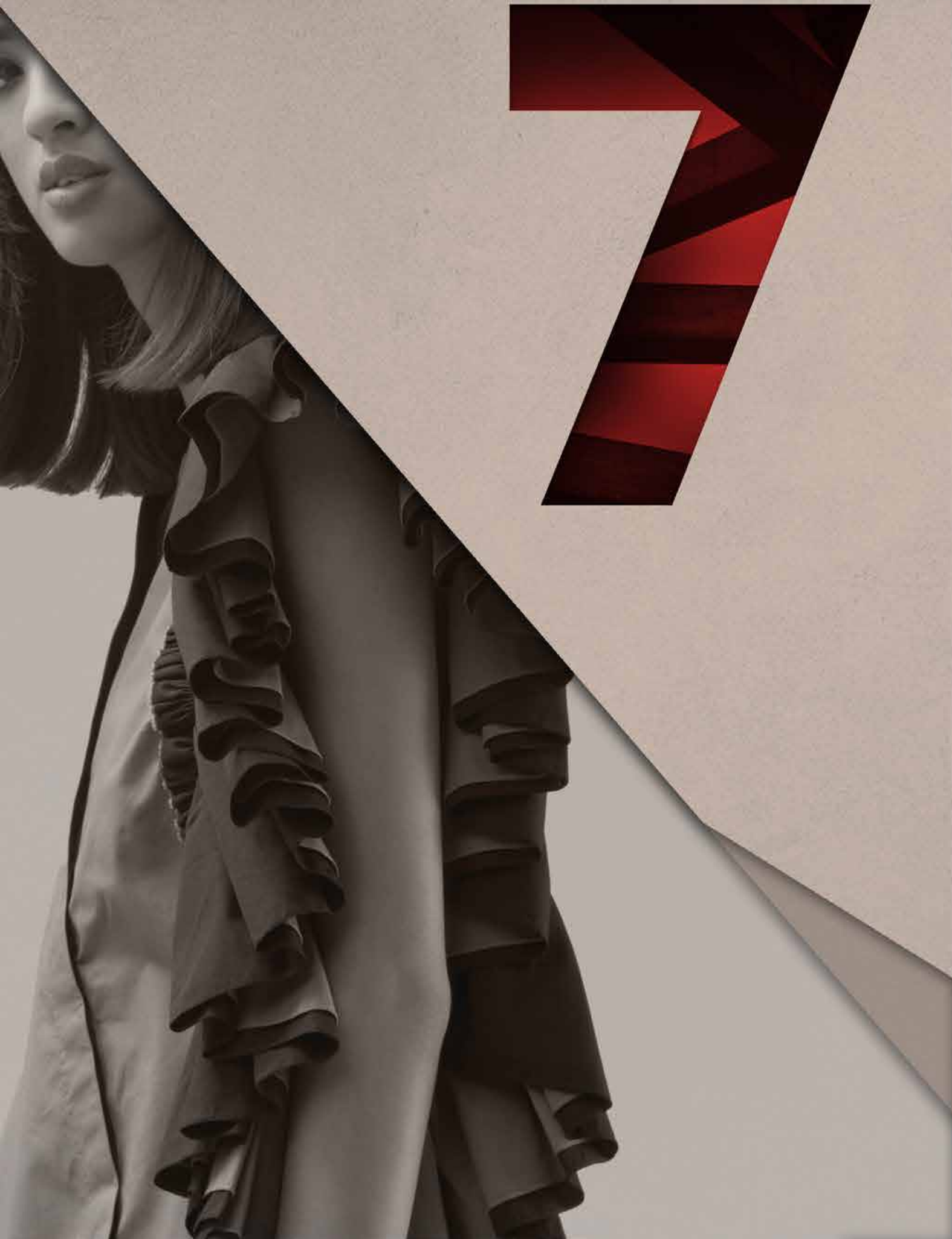
CHILLOSOPHY

# MAN FEST C-1

CAPSULE  
COLLECTION 05

---

FB/IG @chillosophy.in  
W www.chillosophy.in  
E chillosophy.in@gmail.com



- COLLECTION NOTE -

War did not stop fashion, on the contrary, it was used as a powerful form of resistance. Drawing on utilitarian style and brutalist architecture, Manifesto 1 embodies the post-World War II woman. Pulling from military influences, this collection incorporates jumpsuits, shoulder flaps and impeccable detailing. Serving street chic or mod work wear appeal, these pieces are ready for duty. Edgy, powerful and purposeful — this collection breaks corsets, traditions and hearts.





Long trenchdress with statement puffed sleeves with wraparound tie belt and large front pockets

*Poplin*

MURRAY WALKER





A relaxed fit short dress with long and corded tie sleeves and oversized round collar.

*Poplin*

GWEN







Utility inspired jumpsuit with large pockets and front tie belt, cord lining details and full zip opening in the front

*Poplin*

ALAN







MALINA

An off shoulder dress with oversized ruffles and side pockets

*Poplin*







Victor Top / An oversized layered shirt  
with shirt collar and military accents

Woodbury Pants / A relaxed fit flared  
pants with matching buttons on the  
side

*Poplin*



VICTOR  
---  
WOODBURY





A sharp shirt dress with three tier skirt and mid length flare sleeves that features two front straps and interactive sequins at the back

*Poplin*



VALENCIA





A relaxed fit dress with fabric manipulation on one sleeve and a large contrast pocket at the back

*Poplin*

VINCENT







A relaxed fit short dress that features draw cords and knot closing at the bottom with check facing on the sleeves and matching buttons at the back

*European Crepe*







A short anti-fit dress with exaggerated flared sleeves with contrast colour facing which features military accents and large side pockets

*Poplin*

**SHELDON**







A V-neck long dress with fitted waistline, pleats and metallic finish buttons on the front and sleeves, completed with piping details on the seams and military shoulder straps details.

*European Crepe*



VERONICA LAKE





A two piece set of a jumpsuit with tie front knot and elasticated shoulder straps and an off-shoulder crop top with puffed sleeves and piping details at the bottom

Poplin



HENRY

---

TONY







A midi length dress with exaggerated elasticated waistband flowing into fabric manipulation on the side and asymmetrical cut.

*Poplin*



COCO





A V-neck short dress with piping details on the seam and bow details on both sleeves

*European Crepe*

VIVEN LEIGH





This edgy, sophisticated, wearable meet avant garde outfit features sharp tailoring and fabric manipulation throughout. The best part? It looks equally stunning when it's worn as a jacket or a cover up over a dress, tunic or a pair of formal pants.

*European Crepe*

ANGELICA







An anti-fit dress with large round collar, loose fitted sleeves and contrast piping details

*European Crepe*

---



NATALIE WOOD





A sleeveless short dress with pleats from the hip down and piping details on side seams.

*European Crepe*

SHARON TALE





A hooded cape with front hook fastener  
and checks facing on the innerside

*Cotton Denim*







A tailorfit short jacket with front hook details and contrast colour flared pleat details at the back

*European Crepe*



ELIZABETH TAYLOR I





A tailorfit short jacket with front hook details and contrast colour flared pleat details at the back

*European Crepe*



ELIZABETH TAYLOR II





A short knee length skirt with fabric manipulation  
around the waist and military accent

*Poplin*

JUNKO







A two piece set of boat neck top with cord tie details and a long skirt with high slit on the side seams

*European Crepe*

JANET LEIGH







A relaxed fit long shirtdress with contrast top and bottom that has pleat details from the waistline and two front pockets

*European Crepe*

INGRID BERGMAN







A mid length tunic with front hook details with finishes such as the rounded and piping details at the bottom and checks facing on the inside

*European Crepe*

**EVA** MARIE SAINT







A mid length tunic with front hook details with rounded and piping details at the bottom and checks facing on the inside

*European Crepe*







Walter Top / A bustier top with fabric manipulation on the front and tail open details at the back

Carter Pants / A flared pants with box pleats details

*Poplin*

WALTER

---

CARTER







Henry Top / An off-shoulder crop top with puffed sleeves and piping details at the bottom

Woodbury Pants / A relaxed fit flared pants with matching buttons on the side  
Best paired with Victor Top

*Poplin*



HENRY



WOODBURY







A mid length shirtdress with front  
frill details with military accents  
and side pockets

*European Crepe*



DENISE M-I







An asymmetrical cut shirt dress with pleat details which has three quarter folded sleeves detailed with check facing and handmade buttons

*European Crepe*



ODILE M-I





A cascading shirt dress with box pleats details to create a flare sihouette completed with military accents and shoulder straps

*European Crepe*

AMANDA M-I







A cascading shirt dress with box pleats details to create a flare silhouette completed with military accents and shoulder straps

*European Crepe*



NERI M-1





Shift dress with fabric manipulation  
across the dress in an asymmetrical  
cut in darker

*Poplin*

AIRI M - 1





A full front buttoned shirt dress with cape wing sleeve details that features check facing on one side, military accents and handstitch details

*European Crepe*

---

MARION M-I







A mid length tunic with cascading cut on both sides that features metal hook details on the front with check facing on the collar

*European Crepe*



KAZUYO M-1





A long cascading shirt dress with full buttoned front and pockets detailed with handmade buttons and military accents

*European Crepe*

---

AMELIA EKBERG







A long shirtdress with front pleats and box pleat details from waist to bottom furnished with shoulder straps, hook buttons and military accent

*European Crepe*





A long relaxed fit dress with folded  
check facing sleeves and tie front belt

*Cotton*



NORMA M-1





CHAROLETTE M-1

A long dress relaxed fit with cord tie waistline and oversized front pocket details

*European Crepe*







# CHILLOSOPHY

“WE ARE A MINIMALIST LABEL WITH AN EXPERIMENTAL HEART”

Chillosophy was borne out of a personal need to have access to elevated essentials without sacrificing comfort. In 2018, Silky Ahluwalia took a leap of faith and launched into fashion bringing forward her own unique and disruptive view of the industry. Since then, Chillosophy has seamlessly (— no pun intended) developed their collections while maintaining their signature minimal patterns, asymmetrical cuts and impeccable hand-woven detailing.

Chillosophy’s work today essentially rests in linking the skills of traditional weavers and dyers spread all across India with those of the craftsmen working in the studio. The collective skills they bring is an accumulation of knowledge passed down through many generations. Eventually resulting in garments that defy trends and seasons, and will be handed down to future generations of independent women.

As a design philosophy, Chillosophy believes that fashion is so much more than what is worn. Everything crafted has a story to tell. The designs and ideas come from the history of womanhood, equality and self-actualization. Hand designed and created, the garments amplify the artistic process and embody sustainable fashion.

These pieces are meant to take you on your individual journey, wherever it is that you seek to go.