



the scattered light that filters through when sunlight shines through trees

K
O
M
O
R
E
B
I

PHOTOGRAPHY
RAGHAV GOSWAMY

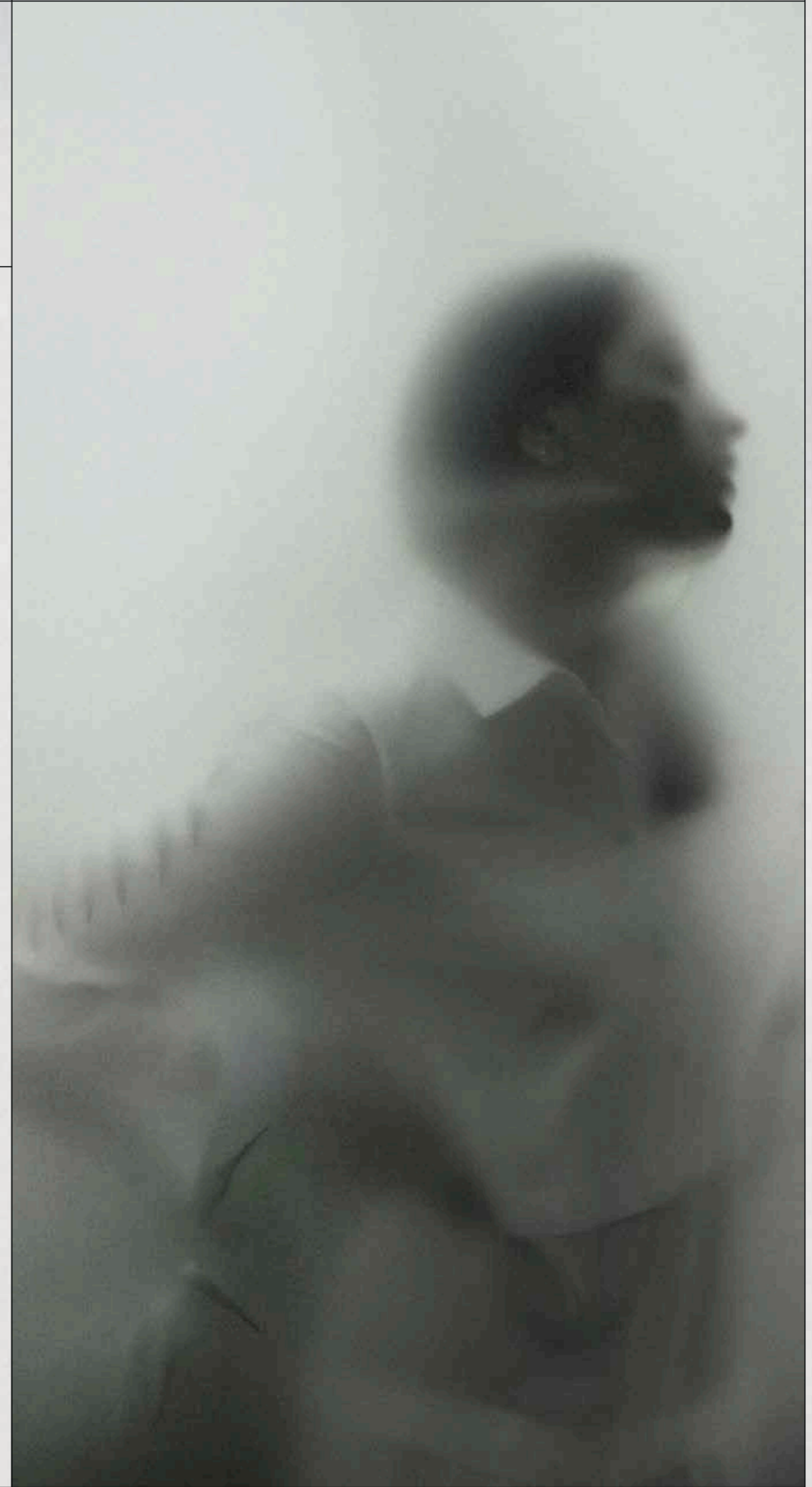
MODEL
PRIYA SINGH

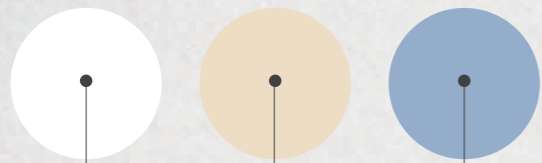
CREATIVE DIRECTION
SILKY AHLUWALIA

MAKE UP
PRITHI MONGA

PRINT
THE DESIGN WALL

WRITE UP
MALLIKA VIEGAS

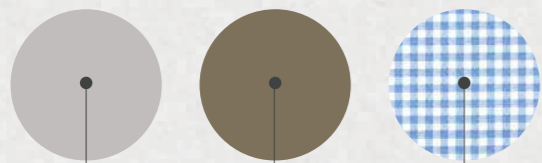




K01
White

K02
Beige

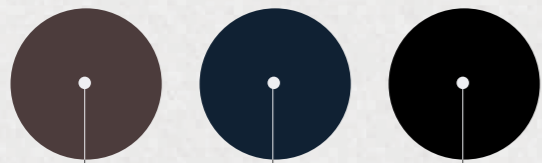
K03
Blue



K04
Light
Grey

K05
Army
Green

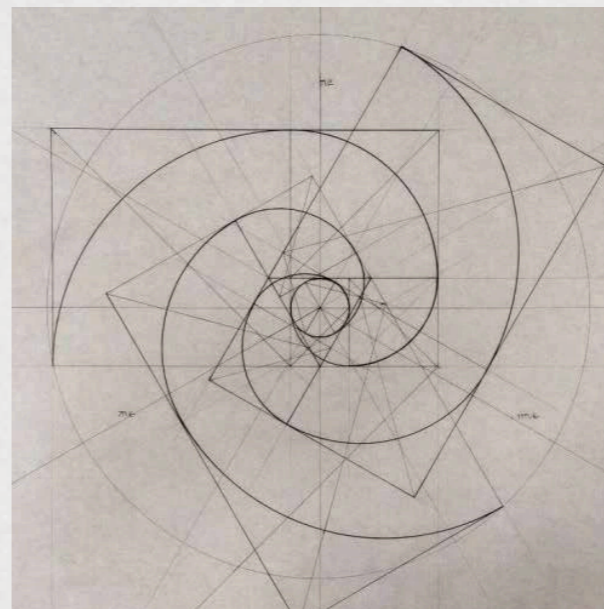
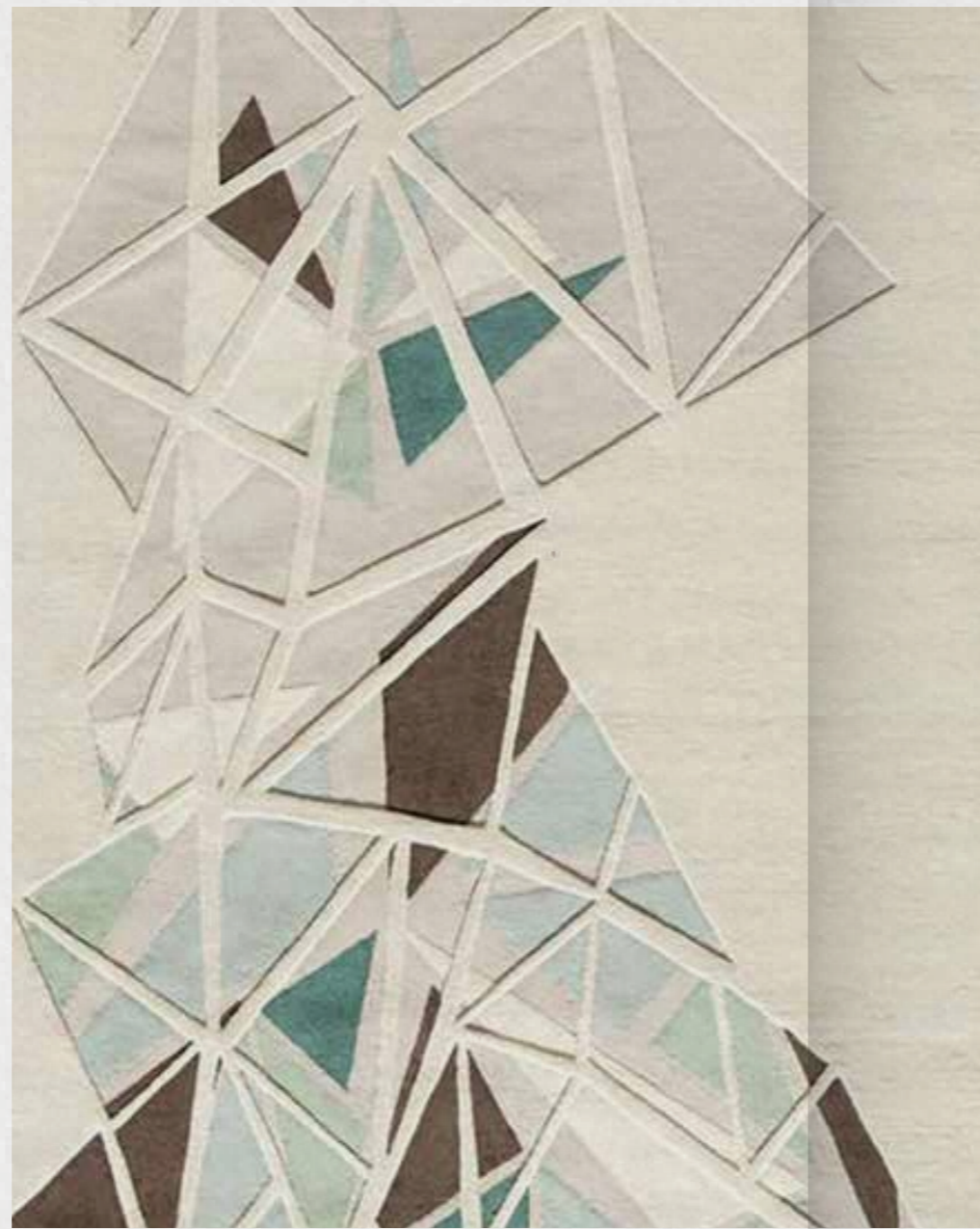
K06
Blue
Gingham



K07
Brown

K08
Dark Blue

K09
Black



COLLECTION
NOTE

Palette

Loosely translated from Japanese to mean, “sunshine filtering through the leaves of a tree”, Komorebi evokes azure skies and crisp, cool mornings. A nod to renowned architect Ludwig Mies van der Rohe and his motto ‘Less is More’, Komorebi adopts construction and design aesthetics from Japanese origami —minimalistic and functional. Handcrafted and sewn with knife pleats and hand embroidered details, each piece takes on a life of its very own. As sunshine dances through the leaves, Komorebi catches the light with quiet, timeless elegance.



www.chillosophy.in

Fabric / Poplin

MAI

Long buttoned shirt with large shirt collar and oversized puffed sleeves detail



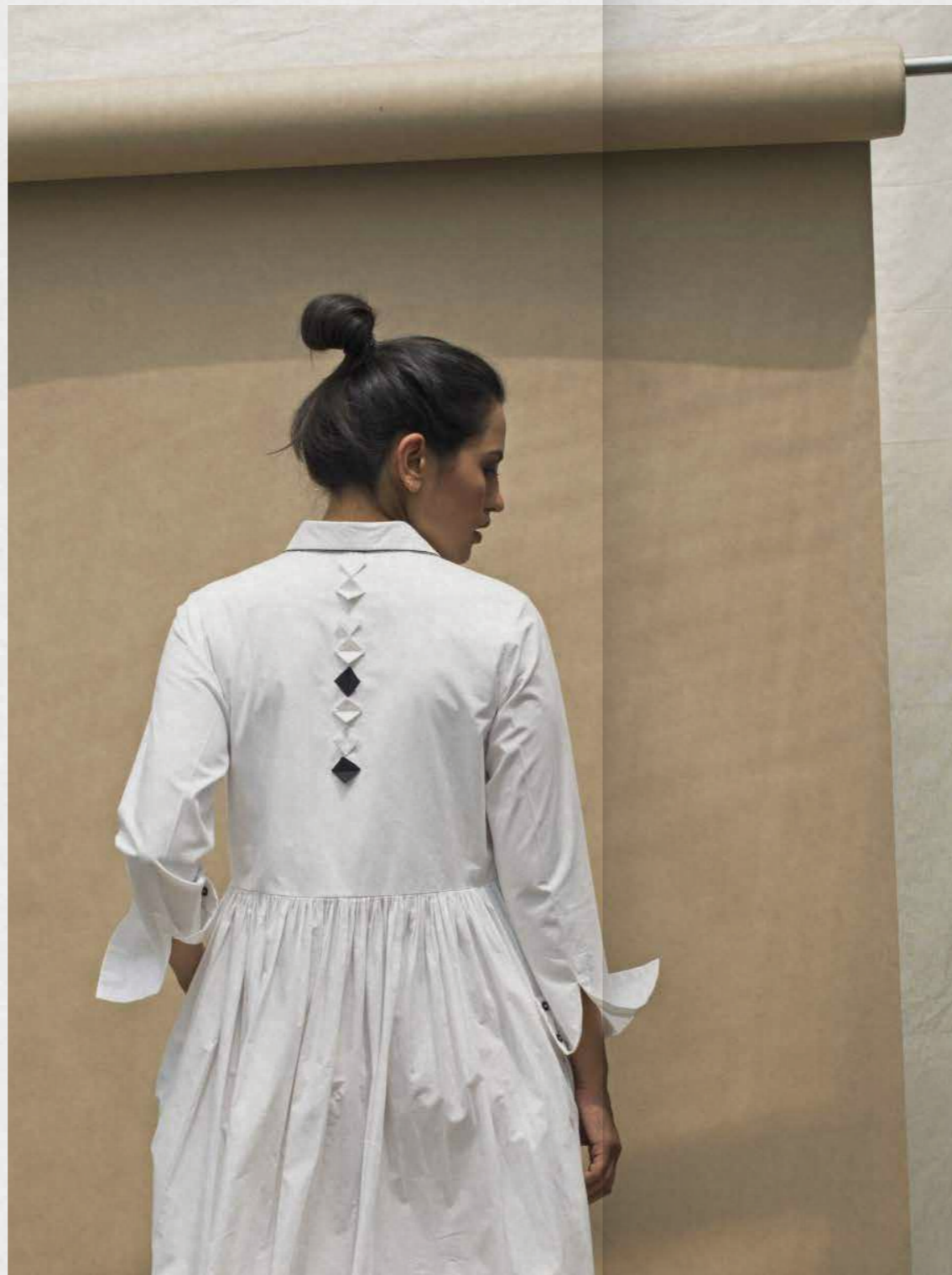
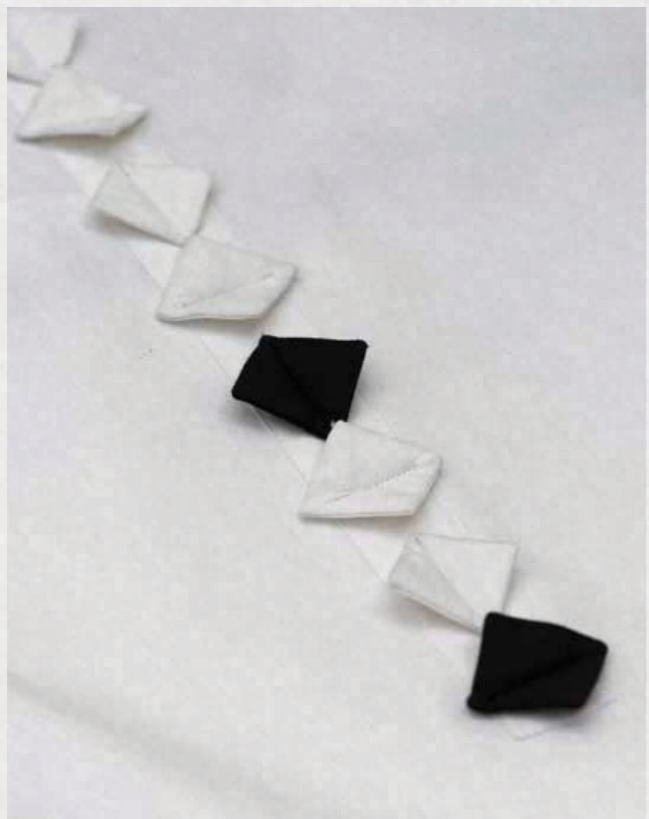
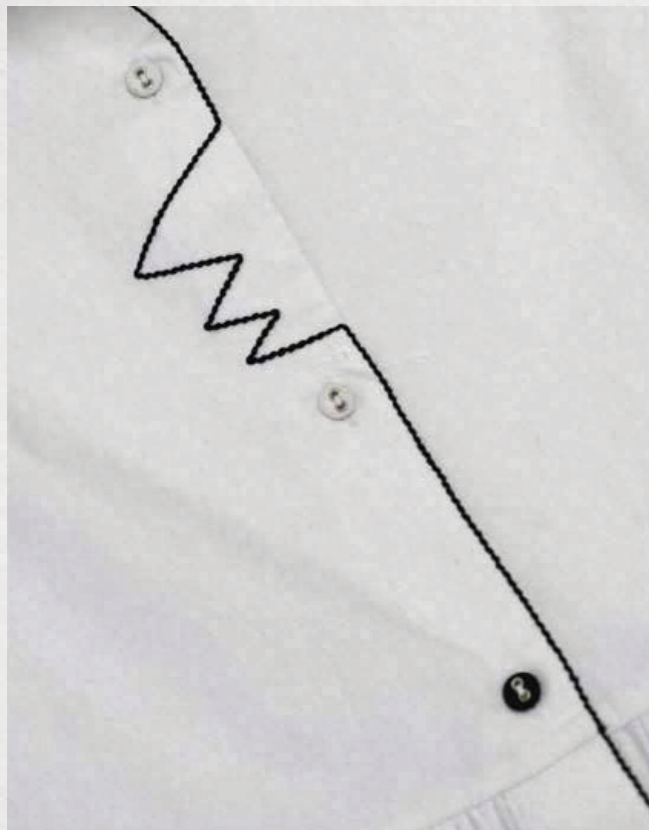
R I S A

Long dress sleeveless with oversized ruffles, side pockets and origami details at the back



YOKO

Long smart dress with handstitch details on the front and also handmade black and white origami details at the back





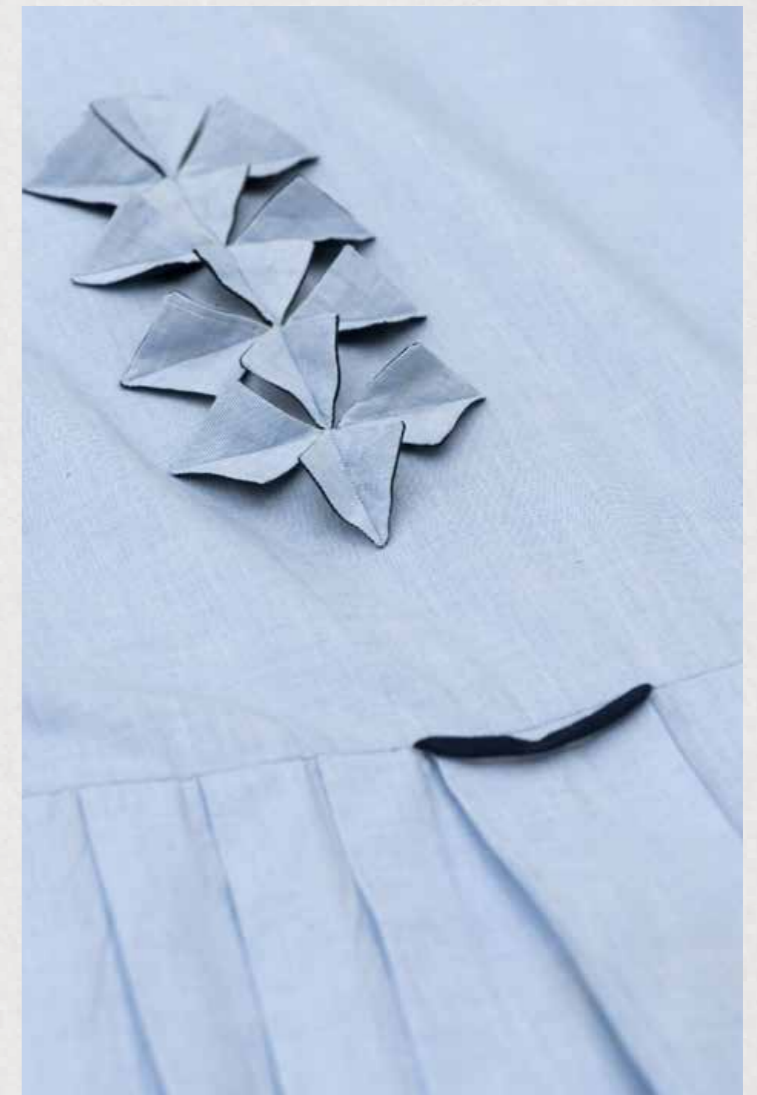
SHIZU

Kimono style with shirt collar and contrast tie front belt details

Fabric / Poplin

KUMI

Long dress sleeveless with pleat details and handstitched origami details at the back



Fabric / Poplin

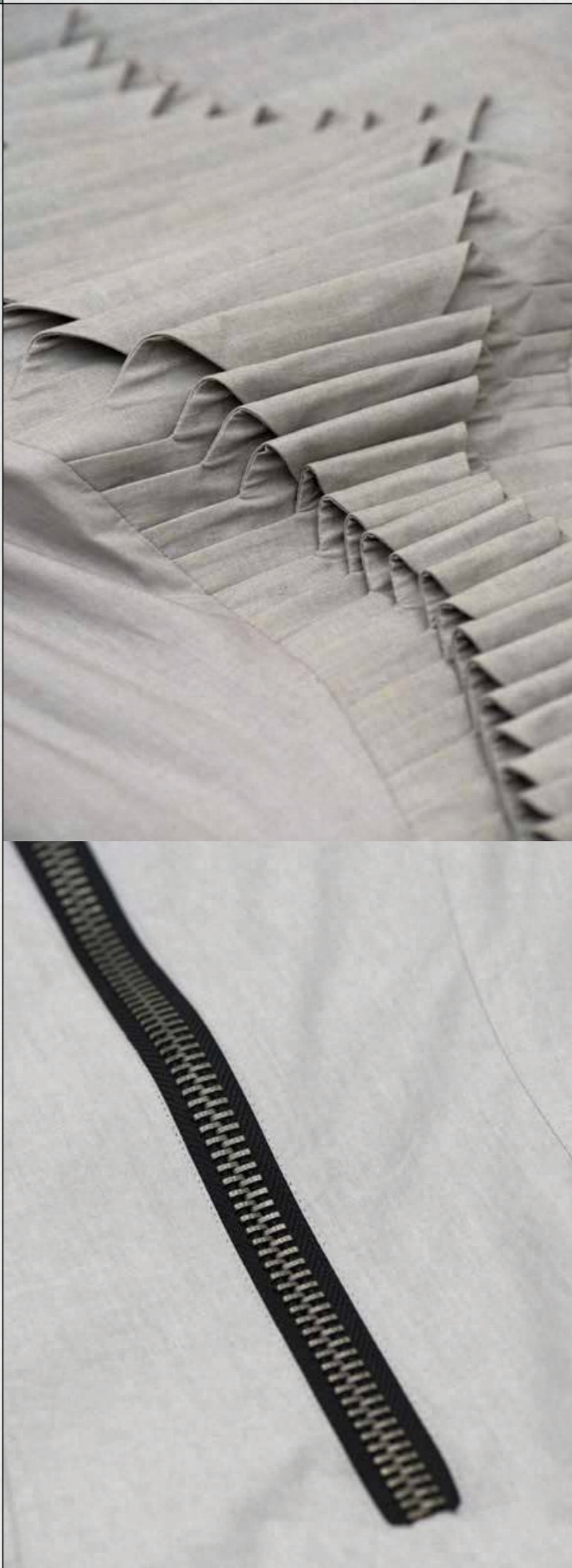


S O R A N O

Long tunic with stitch details on the front that features side pockets and reveal details at the back

Fabric / Poplin

www.chillosophy.in



Fabric / Poplin

A M A A Y A

Shift dress with fabric manipulation in geometric details and check facings along the sleeves and bottom

SUKI



Asymmetrical cut shirtdress featuring shorter front and longer length at the back with handstitch ruffled detail on the side

Fabric / Poplin



Long relaxed fit dress with box shoulder sleeve and large side pockets completed with ruche and charm details along the side seams



YUKA

SACHIKO

Fabric manipulation with handweaved fabric top with matching long skirt and charm detail on the side



Fabric / Poplin

www.chillosophy.in



Cropped jacket with short puffed sleeves and front cord tie ended with charm details

N A R A



www.chillosophy.in

Fabric / Poplin

A I

Long tunic with cord tie details on the side
and large pockets

AIRI



Shift dress with fabric manipulation across the dress
in an asymmetrical cut

Fabric / Poplin



Long tunic with contour layers in contrasting colour underside

Y U M I

www.chillosophy.in



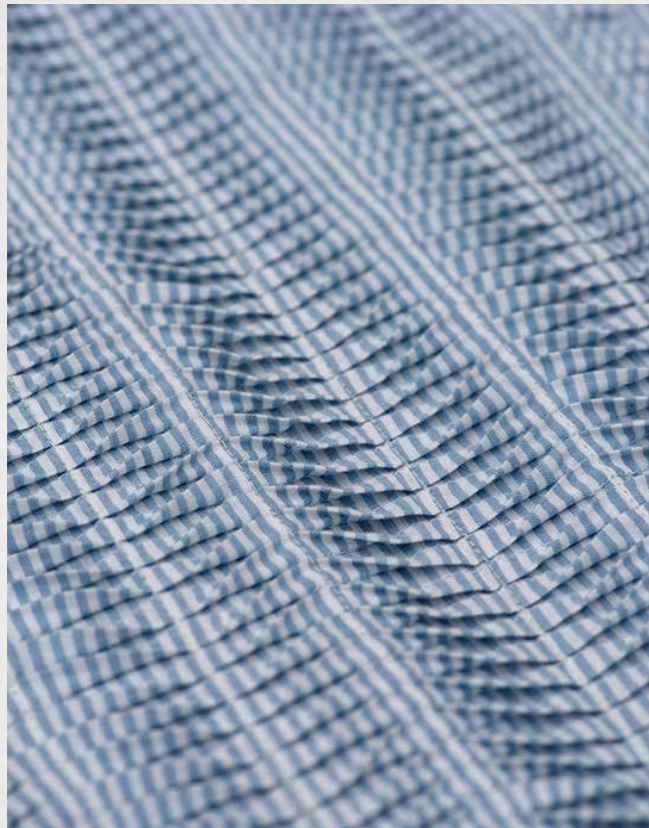
Fabric / Poplin

K I K O

Kimono top with full front button closing and has a round collar with open slit detail on the sleeves completed with handmade buttons

ENA

Long dress with shirt collar and folded mid length sleeves that features fabric manipulation at the back and charm detail



Fabric / Poplin



MIHO

Long front buttoned shirt with
check facing details and has pleats
details on the back





Long front buttoned shirt with check facing details and has pleats details on the back

SAKURA

Fabric / Poplin



MITSU

Mid length tunic with asymmetrical cut and front knot details that has different sleeves details

H A R U

Shirt dress with three tier layer that features pleat details on the bottom tier



Fabric / Poplin

FB/IG@chillosophy.in | www.chillosophy.in | chillosophy.in@gmail.com

BRAND ETHOS

Chillosophy was borne out of a personal need to have access to elevated essentials without sacrificing comfort. In 2018, Silky Ahluwalia took a leap of faith and launched into fashion bringing forward her own unique and disruptive view of the industry. Since then, Chillosophy has seamlessly (— no pun intended) developed their collections while maintaining their signature minimal patterns, asymmetrical cuts and impeccable hand-woven detailing.

Chillosophy's work today essentially rests in linking the skills of traditional weavers and dyers spread all across India with those of the craftsmen working in the studio. The collective skills they bring is an accumulation of knowledge passed down through many generations. Eventually resulting in garments that defy trends and seasons, and will be handed down to future generations of independent women.

As a design philosophy, Chillosophy believes that fashion is so much more than what is worn. Everything crafted has a story to tell. The designs and ideas come from the history of womanhood, equality and self-actualization. Hand designed and created, the garments amplify the artistic process and embody sustainable fashion.

These pieces are meant to take you on your individual journey, wherever it is that you seek to go.

"We are a minimalist label with an experimental heart"