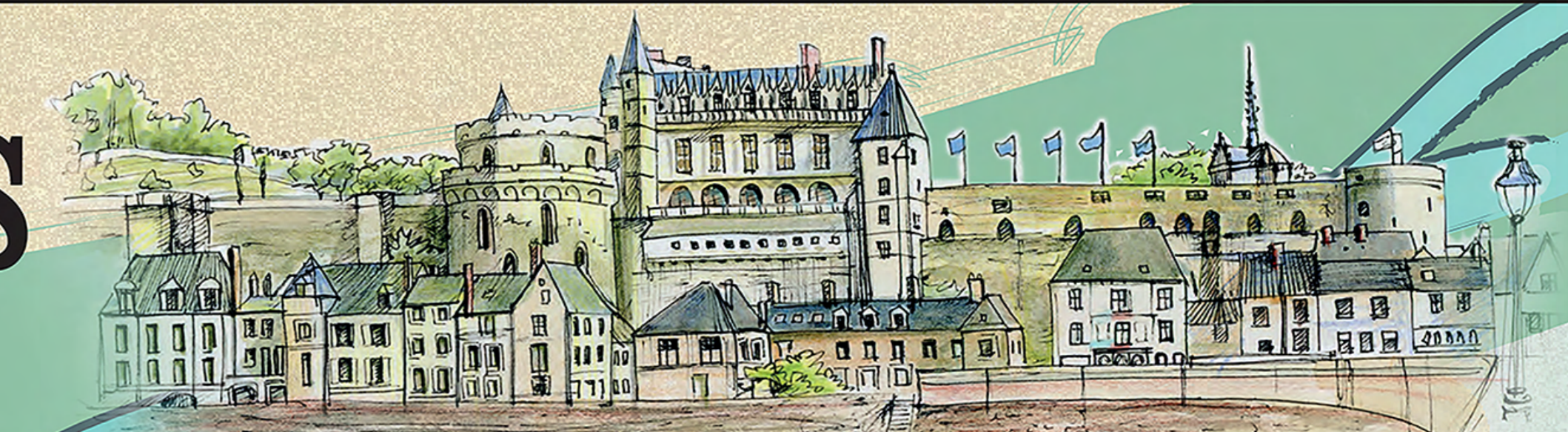


TOURS

# MONTLOUIS-SUR-LOIRE : TERROIRS ET LIEUX-DITS



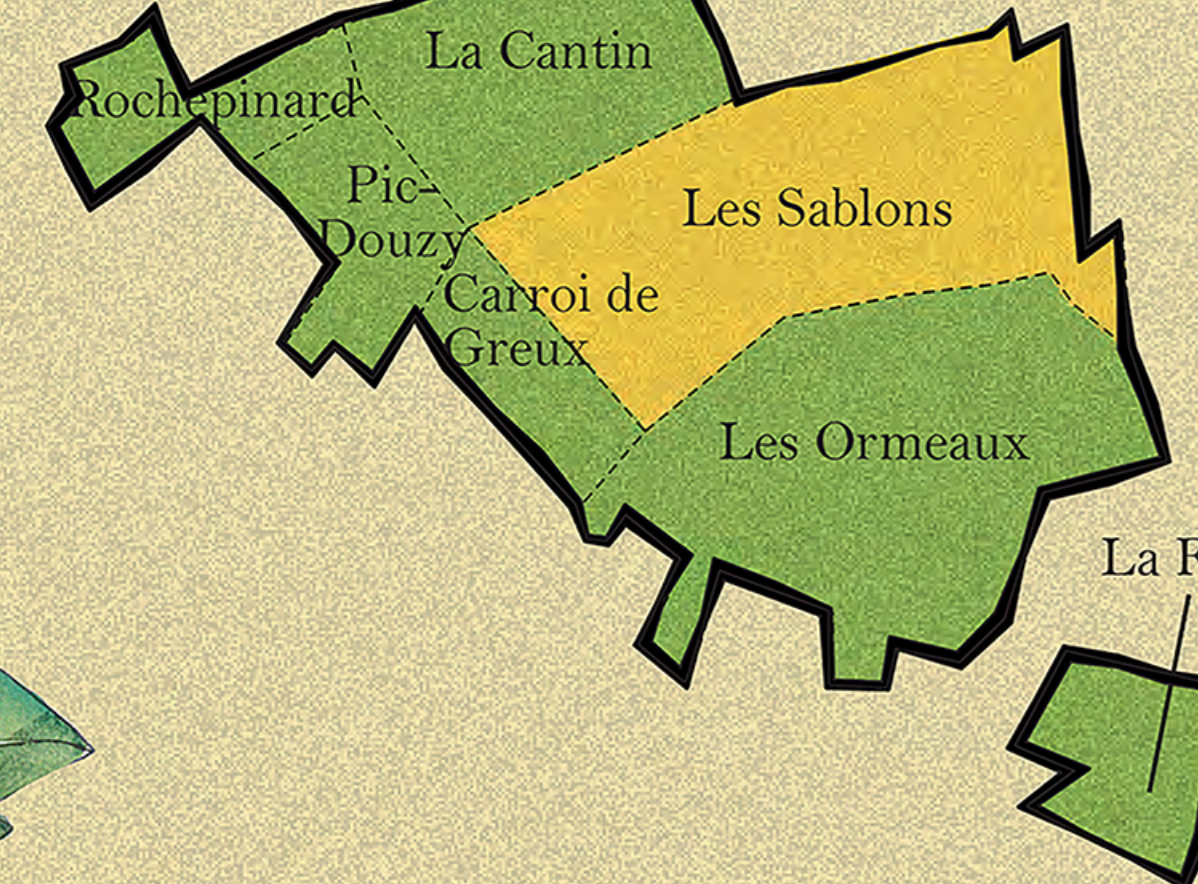
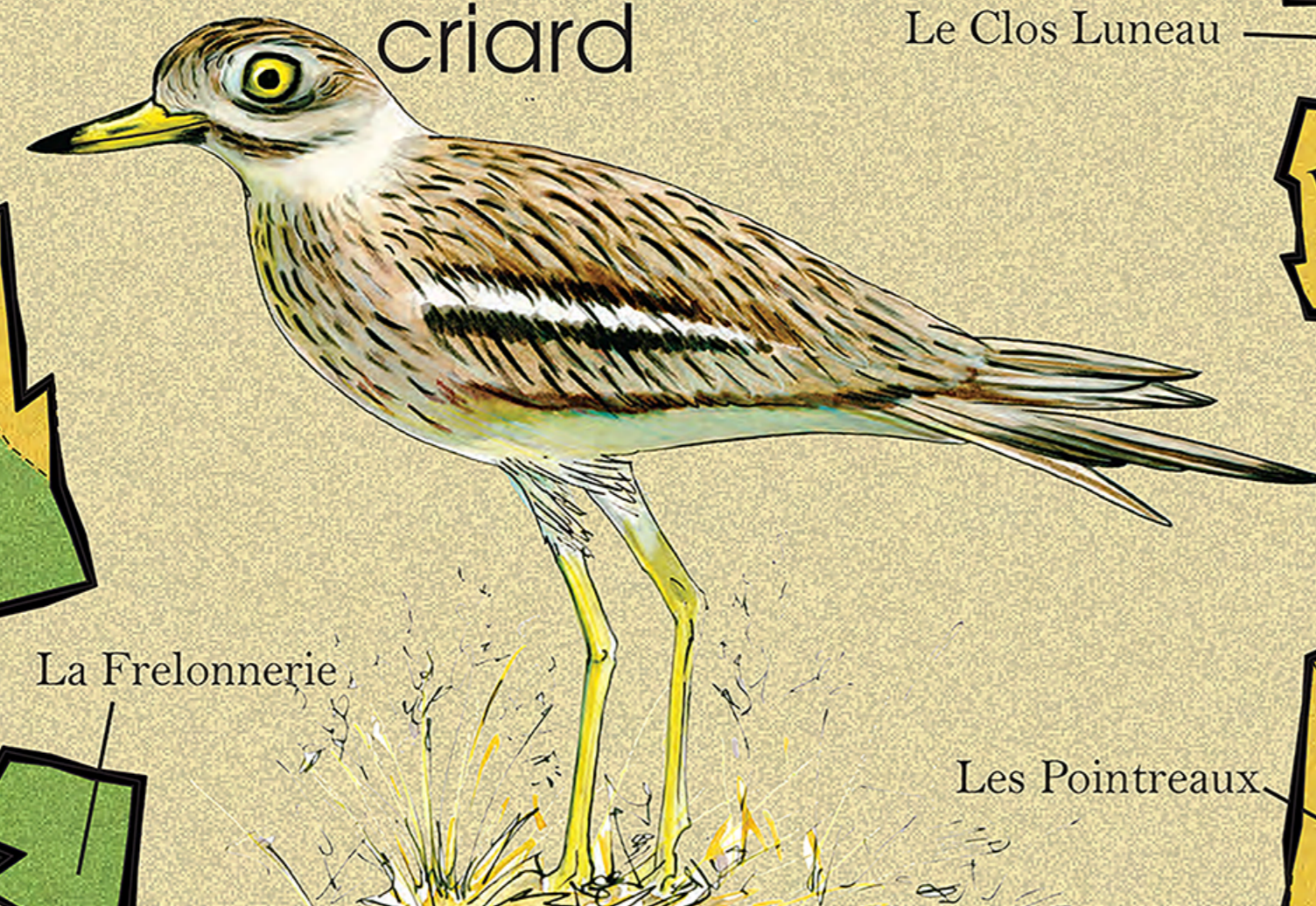
Château d'Amboise



LE ROCHER DES VIOLETTES

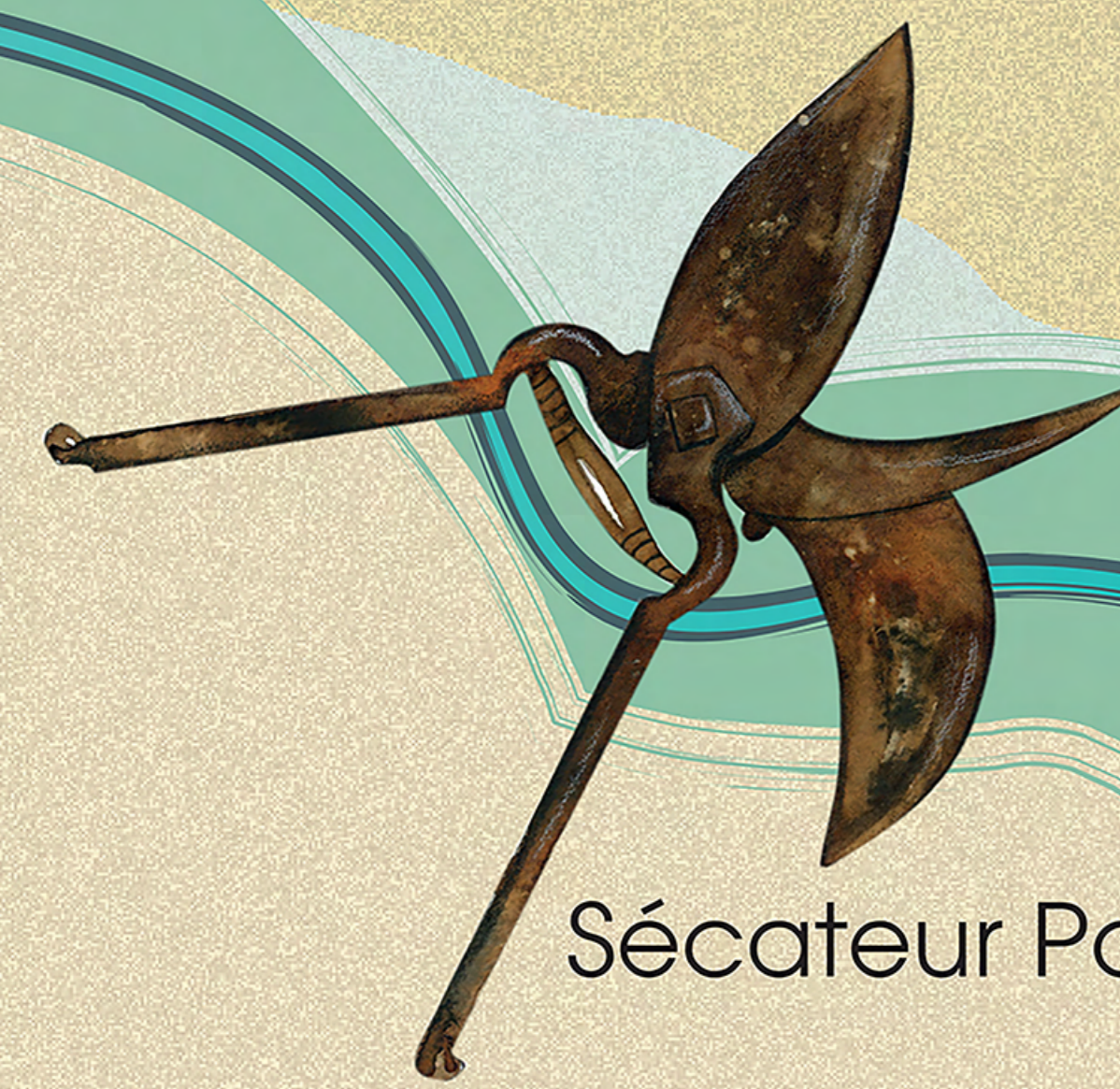
Place Plumereau, Tours

Oedicnème criard



Montlouis-sur-Loire

Sécateur Poumaillou



La Loire

Le Cher

Lussault-sur-Loire




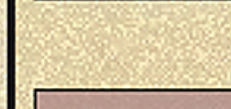
Montlouis-sur-Loire

Saint-Martin-Le-Beau

**AOC MONTLOUIS-SUR-LOIRE**  
**DATE DE L'AOC : 1938**  
**CÉPAGE : CHENIN BLANC**  
**COMMUNES :**  
**MONTLOUIS-SUR-LOIRE**  
**SAINT-MARTIN-LE-BEAU**  
**LUSSAULT-SUR-LOIRE**

## LEGENDE

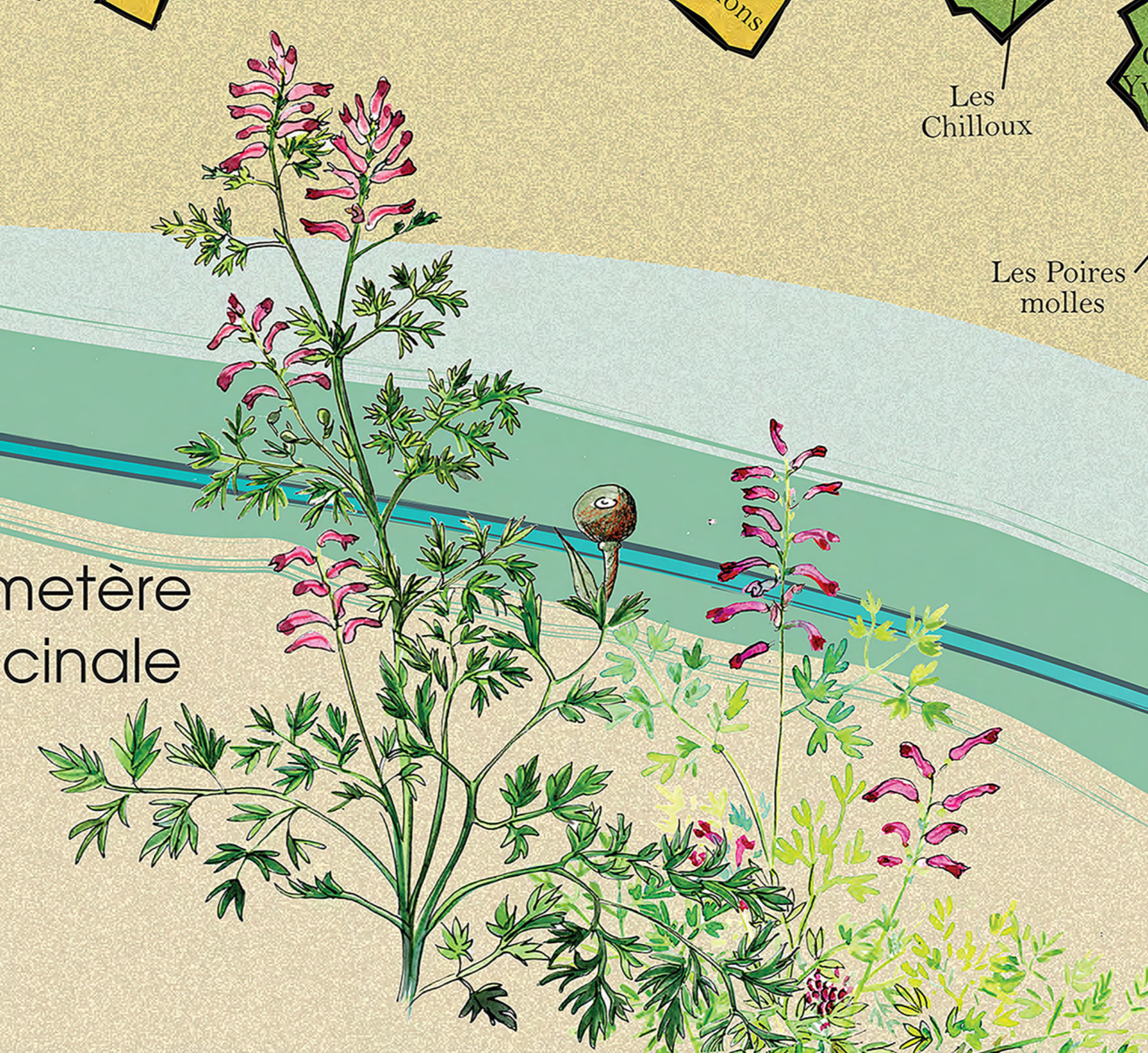
### Les différents substrats :

-  Sables Eoliens  
*Aeolian sand*
-  Sables Limoneux sur Argiles dégradées  
*Silty sand on degraded clay*
-  Argile à silex type « Perruches »  
*Flinty clay*
-  Limon Argilo-calcaire  
*Silty clay and limestone*



Château de la Bourdaisière, Montlouis-sur-Loire

Fumetère officinale



PETILLANT ORIGINEL