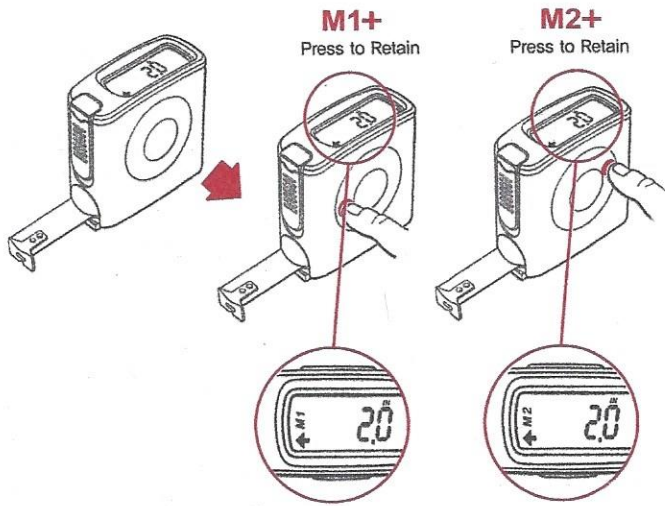
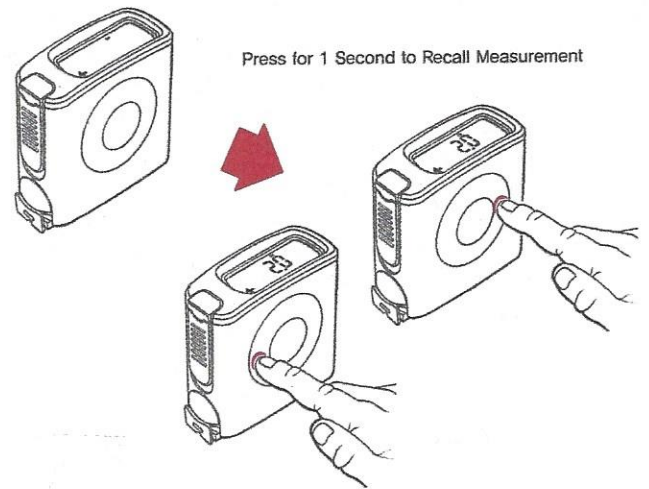


Dual Memory (Memory Record)



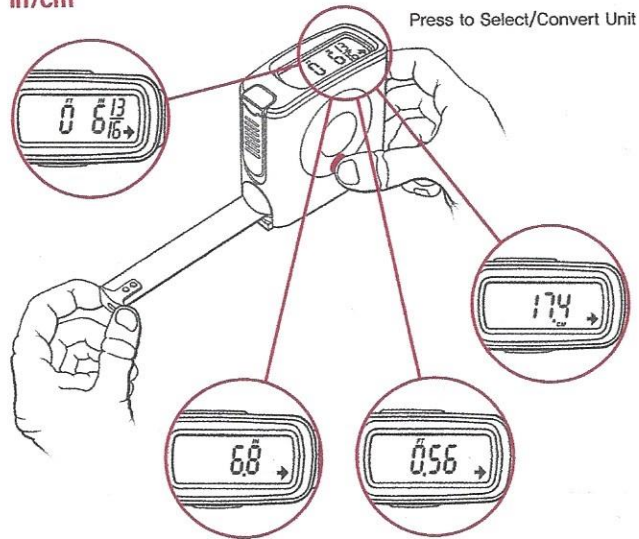
Dual Memory (Memory Recall)

MR



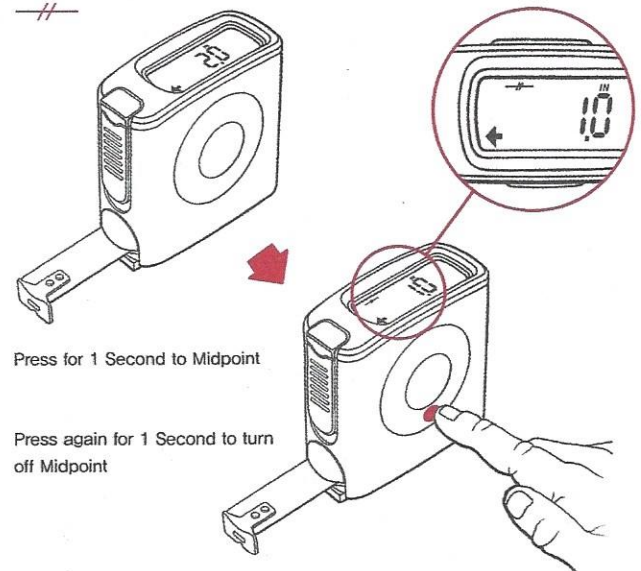
Select/Convert Units

in/cm



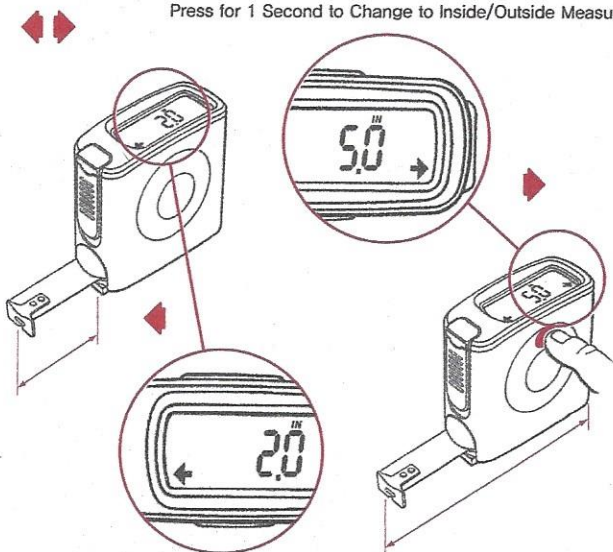
Midpoint

—/—



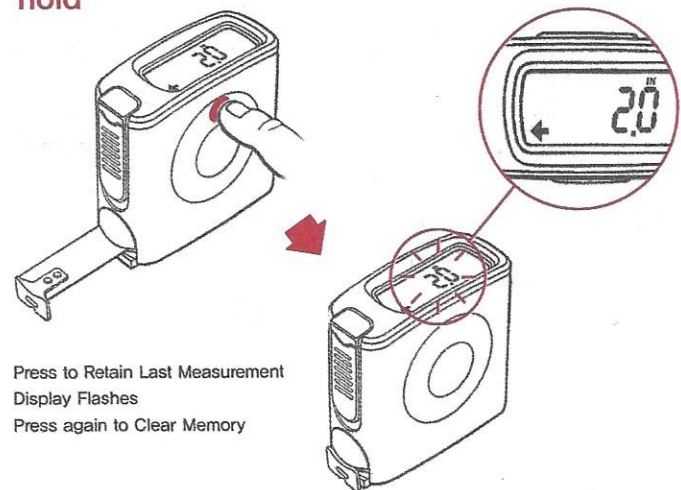
Select Inside/Outside Measurement

Press for 1 Second to Change to Inside/Outside Measurement

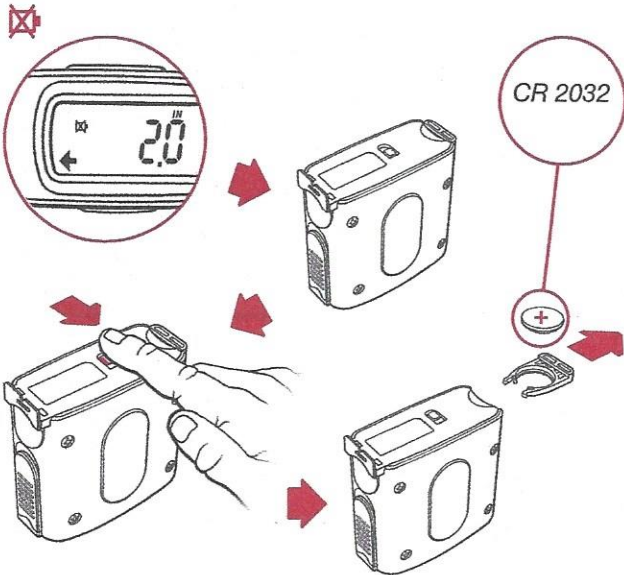


Retains Last Measurement

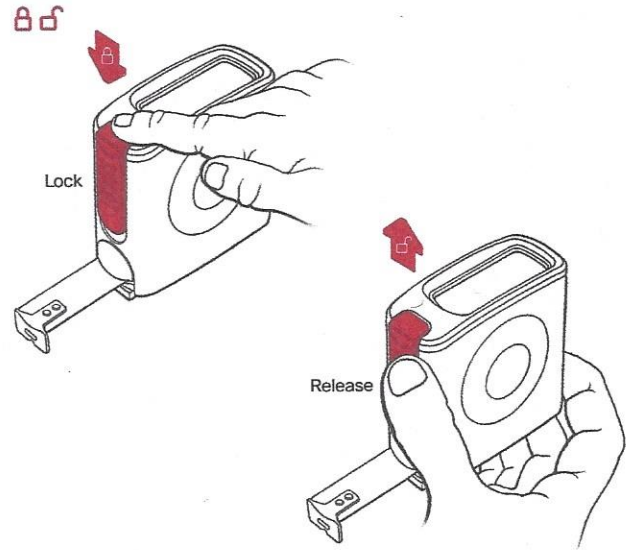
hold



Battery Replacement



Blade Lock



Auto Shut - Off

* eTape16 has an auto-shut off after nonuse of 5 minutes.
To turn on simply pull out the tape blade a few times to activate the eTape16.

FCC Compliance Statement



This device complies with Part 15 of the FCC Rules. Operation is subject to the following two conditions:

- (1) this device may not cause harmful interference, and
- (2) this device must accept any interference received, including interference that may cause undesired operation.

Warranty:

eMeasure, Inc. warrants eTape16 product for 90 days (for products with electrical or electronic components) against deficiencies in material and workmanship. **This LIMITED WARRANTY does not cover products that are improperly used, abused, altered or repaired. Deficient products that are covered by this policy will be replaced.**

www.etape16.com 1 844- 382-7326

Made in Korea