

Rod Blank Material Options

TALON®
talonrods.com



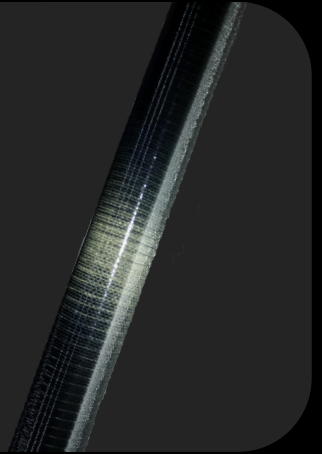
Our carbon (graphite), composite and fiberglass materials are carefully chosen and tested for optimal fishing rod blank performance.

Available on
talonblanks.com

Osprey_Carbon

OG Blanks - SM T700 Carbon

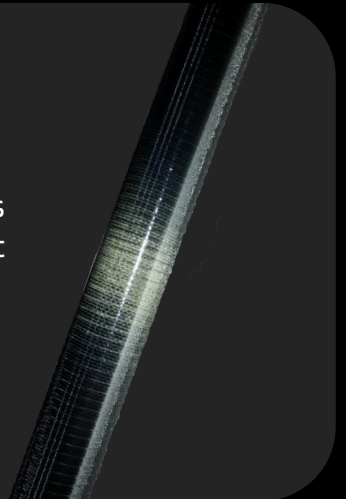
The "OG" Series harkens back to the glory days of the original Talon rod blanks. Built using the same T700 OG Carbon that the original patterns were constructed of, these blanks match with the dynamic and classic feel that made Talon a respected name among rod builders. With the durability and reliability of this trusted graphite, the OG series features straight-ahead blank patterns that match with an array of technique specific actions. There is a reason rod-builders still rely on these blanks to this day - trusted performance that feels right in the hand, and performs exactly what they're intended for. Classic fishing rod blanks that have been trusted for decades!



Osprey_Carbon

Freshwater - T800 IM

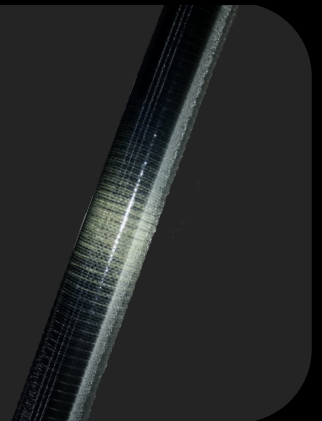
Lightness and sensitivity are certainly two hallmarks of the T800 IM Graphite, but that doesn't mean you need to sacrifice in durability. Talon patterns are designed to take advantage of the benefits of this graphite material while maintaining right-sized wall thickness to meet the demands of multiple actions and stiffness. The T800 IM has fast-action options that are highly sensitive, but with a forgiving action that can handle a powerful fish. Some models have a more moderate bend yet they retain the responsiveness that builders require from a graphite blank. The T800 IM is a top-level, sensitive graphite for high-quality builds, but still has the strength and durability that builders have come to know and love from Talon.



Osprey_Carbon

SM T700

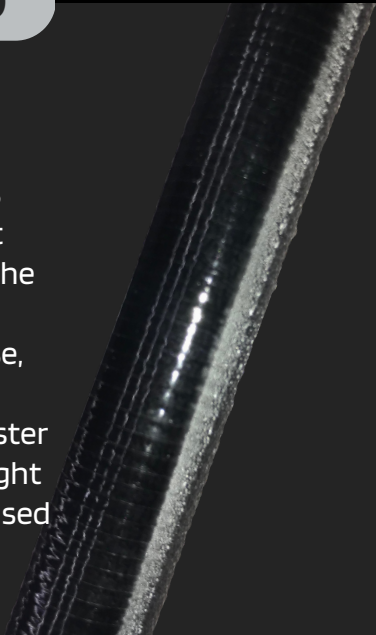
Right in the wheelhouse of most techniques and specifications, T700 carbon is dependably excellent at delivering well-tuned fishing tools. It is a standard modulus material with high tensile strength. While retaining a good measure of sensitivity and lightness, it bridges the gap between more moderate and fast materials. T700 can match a wide range of actions and bends. It's well-rounded in its uses and is an excellent choice for a number of fisheries. These are classic, reliable and effective rod blanks no matter which pattern you choose.



Osprey_Composites

EGlass, T700 & T800

The combination of three trusted materials comes together in a phenomenal composite blank series called "Osprey Composites". Fiberglass has always been ultra-strong, with a slower action and responsiveness, but adding T700 & T800 to the blank-building process enables anglers to harness the best of both worlds. Anglers often don't even realize it is a composite when they first hold these blanks, due to the relative lightness when compared to other fiberglass and composite blanks on the market - but these blanks truly do feature glass. Of course, the blend and pattern is all dependant on the technique, but these components can run the gamut from very moderate and softer, to a faster and more responsive option. Even though composites have been thought of as essentially a slightly faster glass over the years, you may be surprised by the capabilities of these blanks, beyond just their durability. Go composite and open up a whole new world of rod-building possibilities!



SUPER EAGLE_Glass

E2 Glass

Fiberglass earned its place as a rodbuilding material going back longer than most of us have been alive, but it still has its uses in modern-day fishing. The softer actions, the even response and the strength of the material makes it a shoe-in for certain techniques. The Super Eagle Glass has the ideal glass action that builders seek, but is surprisingly light compared to some other fiberglass blanks on the market today. The two-tone composite glass look of these blanks makes for some beautiful black & white builds, while the pattern designs open up a myriad of possibilities for the rod builder. For modern fiberglass performance - go Super Eagle!



XMW_Carbon

XMW_

A true graphite composite blank series (no fiberglass) with ridiculous abilities. The XMW features Helically Wound Carbon T700 material, with HM carbon and T800 carbon Unidirectional. This results in the strongest rod blank on the market today, with unmatched sensitivity and responsiveness. For the builder looking to offer an absolutely premium product, XMW delivers in how light and sensitive it is, while being mind-blowingly durable. Crispy actions, powerful backbones, surgical feel - these blank models will have anglers bragging about their favorite rod to everyone who will listen.

