

waveTM

INFLATABLE SUP

Inflatable SUP Assembly & User Manual

Read carefully and keep for future reference

Follow us @ADVENTUREWITHWAVE



W W W . W A V E S U P S . C O M

WARRANTY

- Visit WWW.WAVESUPS.COM
to register your free
Warranty package.



W W W . W A V E S U P S . C O M

Hello!

ADVENTURE AWAITS

WWW.WAVESUPS.COM

STAND UP PADDLE BOARD OWNER'S MANUAL
WARNING: PLEASE READ CAREFULLY AND KEEP FOR FUTURE REFERENCE.



IMPORTANT WARNINGS



Warning: A Personal Flotation Device (PFD) is required for each user.



Warning: Swimming ability required.



Warning: Keep away from fire.



Warning: Do not leave product exposed under direct sunlight as it may reduce the life of the product.



Warning: Beware of offshore winds and currents. Do not use on open water in high winds.



Warning: Do not use around sharp objects.

Safety and Care

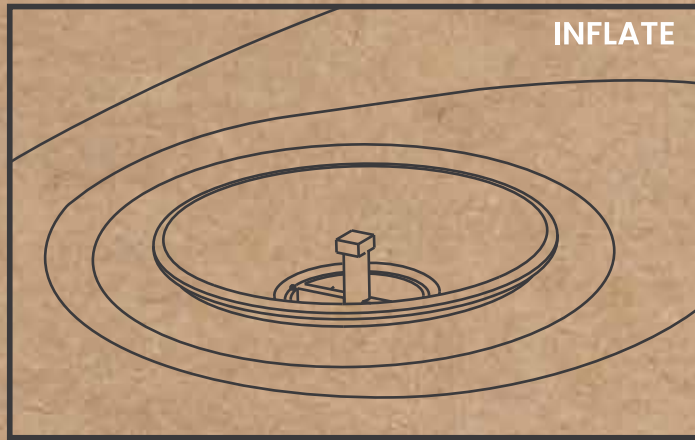
Ensure that the coiled ankle leash is attached at all times when aboard the SUP. Upon exiting the water, ensure that your leash is not dangling to avoid it getting caught on rocks or creating a trip hazard.

Weather depending, we recommend wearing a wetsuit and buoyancy aid at all times. We strongly advise you to have a SUP buddy with you at all times.

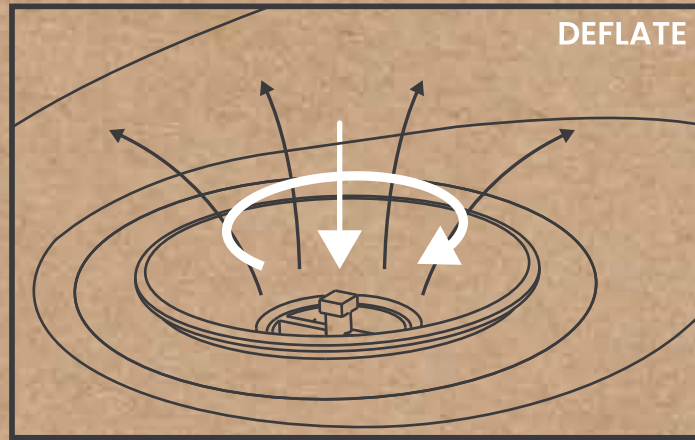
Utilise the cargo straps to stow emergency items such as water, mobile phone, food, repair kit, whistle, torch etc. The cargo straps' expandable nature has the capacity to store both dry bags and cool bags with ease.

Extreme weather conditions can result in over/under-inflation. Ensure that you use the pressure gauge mounted on the pump to monitor the PSI of the board periodically. Board maintenance is essential to ensure the longevity of your SUP.

VALVE INSTRUCTION

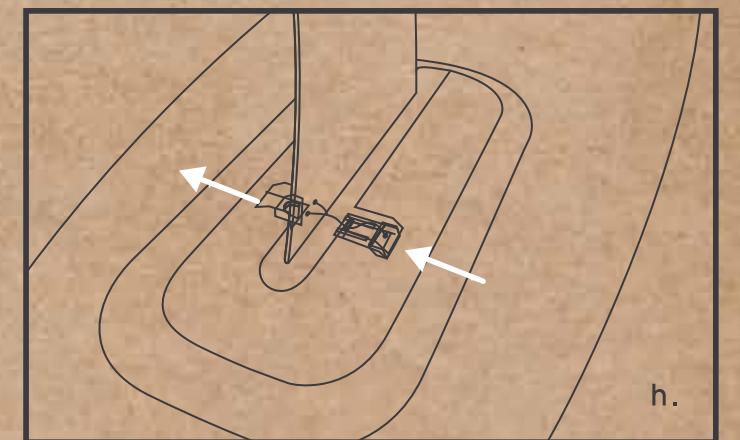
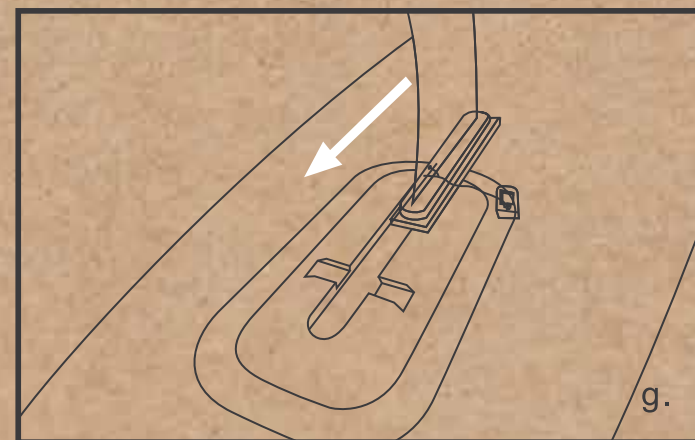
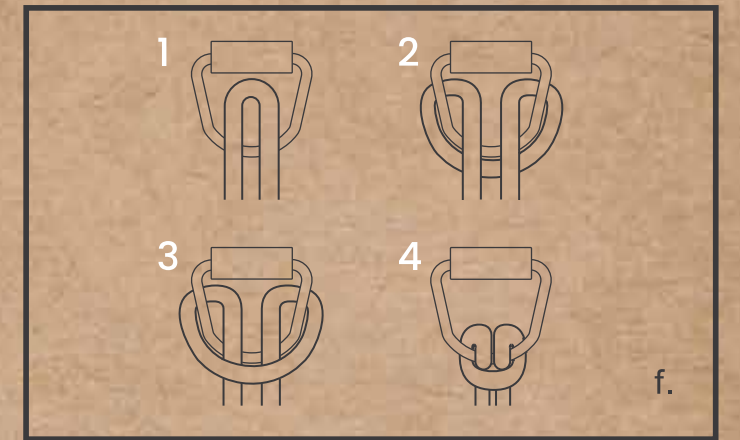
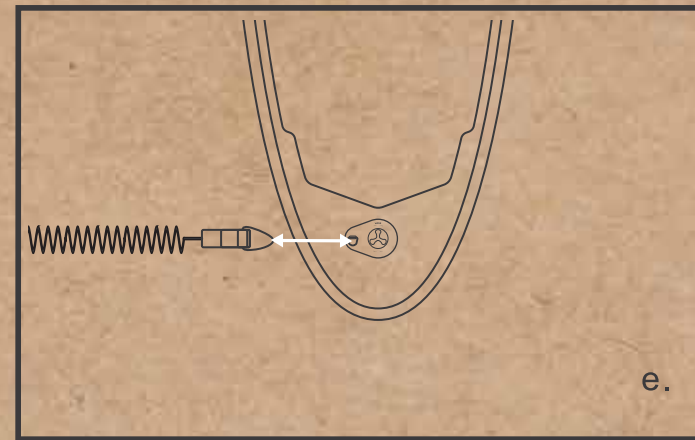
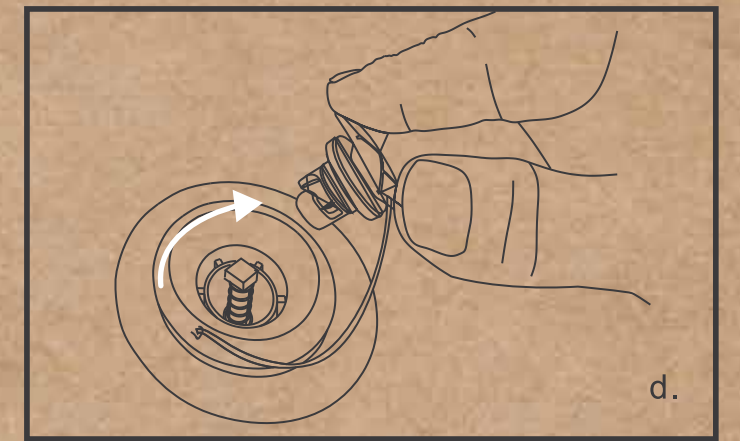
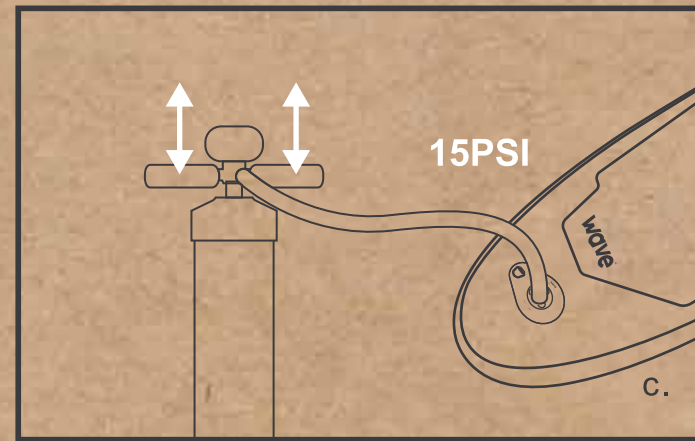
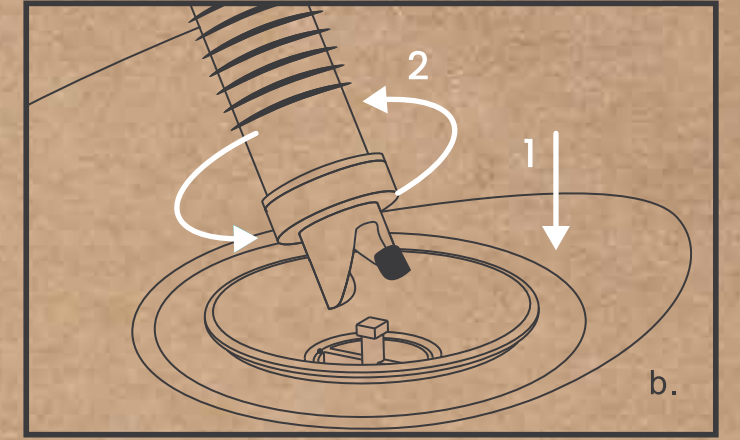
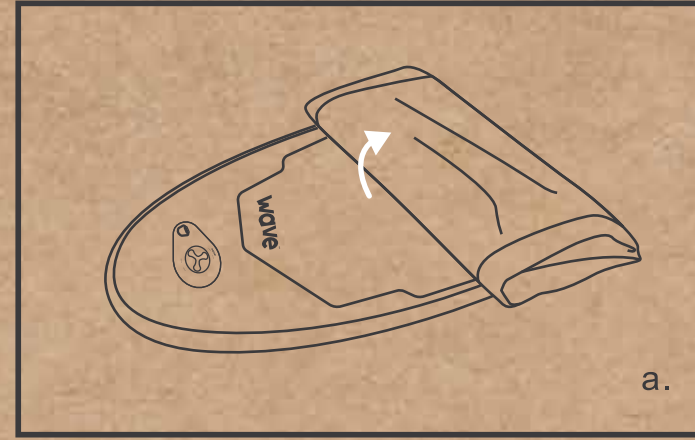


Inflation mode:
Ensure the valve pin is in the raised (closed)
position, ready to inflate.



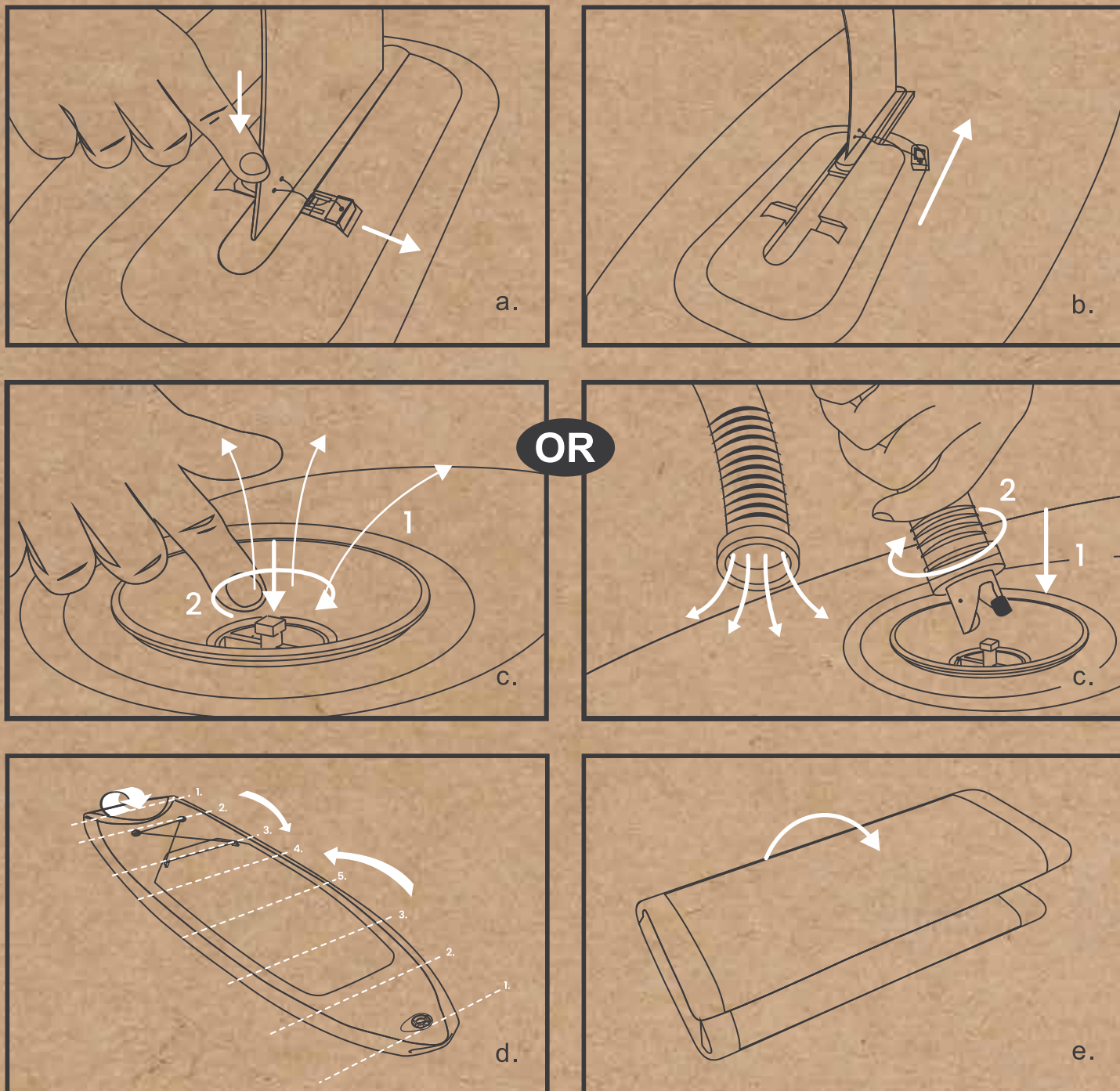
Deflation mode:
Press pin down to open the valve and deflate.

INSTALLATION AND INFLATION



SETUP VIDEO

DEFLATING AND STORAGE



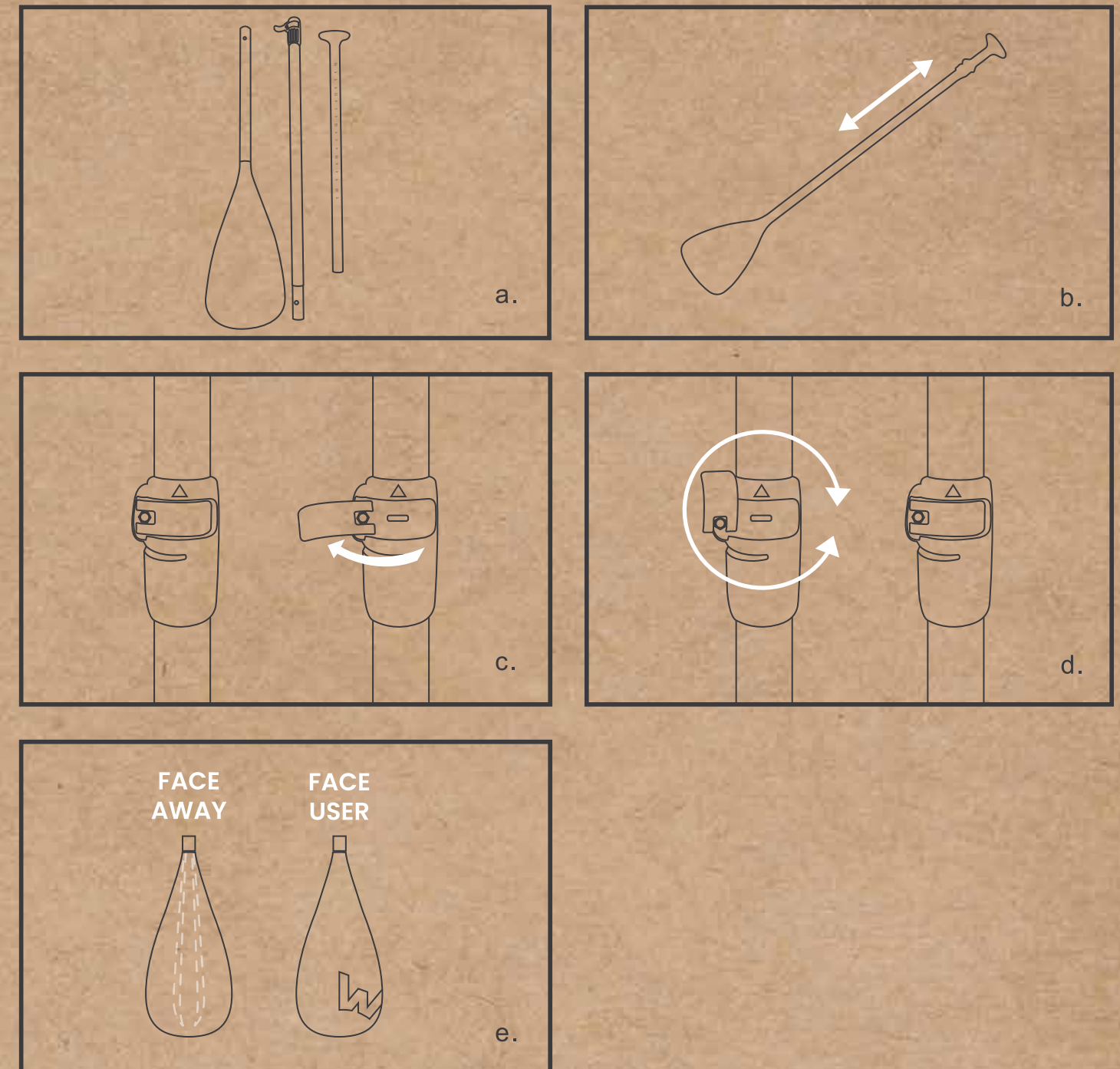
Before deflating the SUP, detach the fin to prevent the possibility of punctures. Clean and dry the board to prevent dampness or mould. If your SUP is very dirty, clean with mild soap and water, but avoid using chemicals.

To deflate your SUP, remove the valve cap and press down the valve pin. Most of the air will be expelled, but to get your board fully flat, start from the front of the SUP and use your hands to push air towards the valve. When satisfied the air has been expelled, roll your SUP from the end opposite the valve, using the fold guide printed on the board as a starting point.

Once you have rolled the SUP as far as the valve, release the valve pin to lock it, and re-attach the valve cap.

Please pack and store your SUP in the backpack provided, in a cool, dry place, away from direct sunlight, to prevent the possibility of sun-bleaching or overheating of the PVC.

PADDLE ASSEMBLY AND ADJUSTMENT



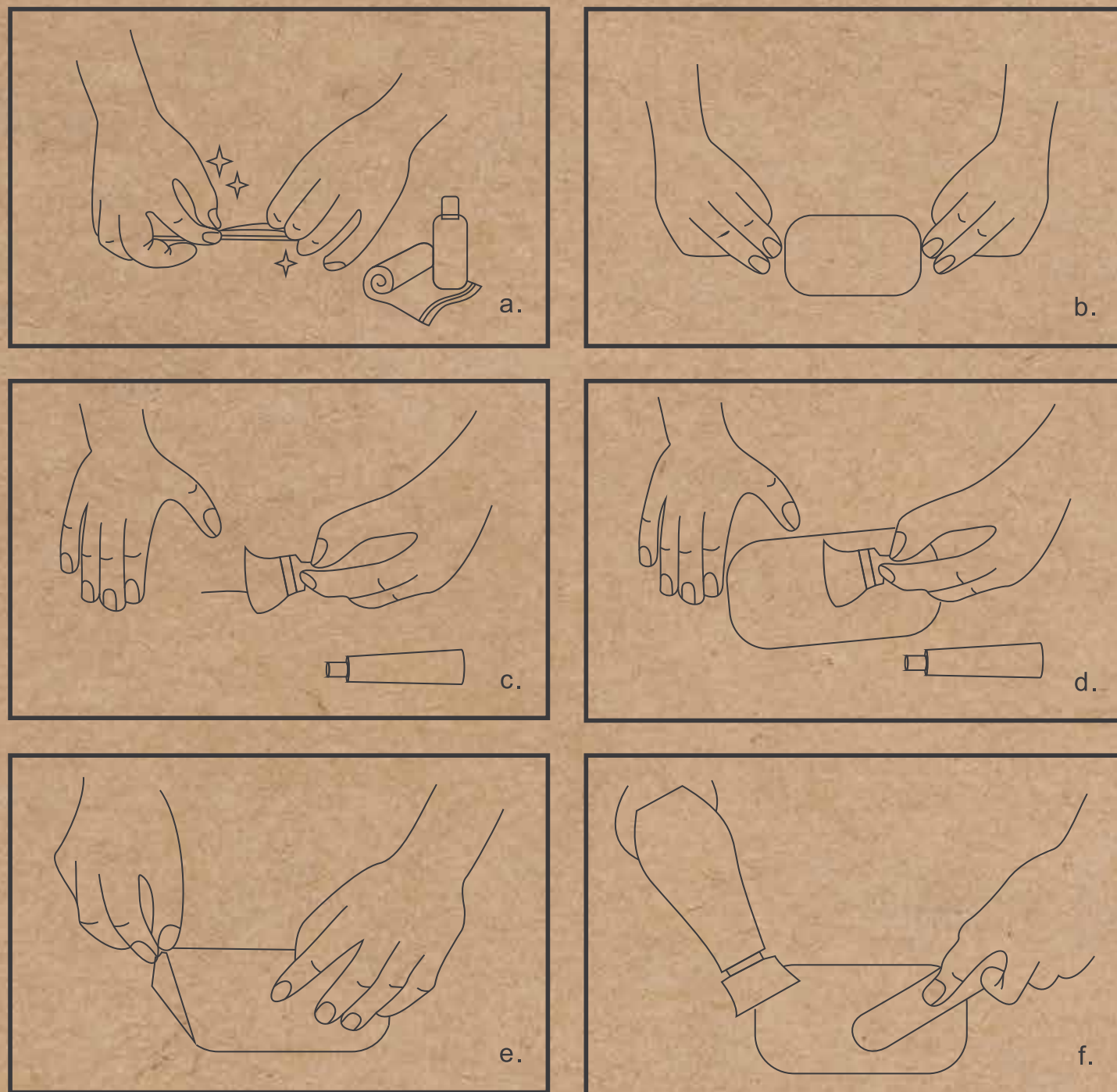
Your board paddle comes in three pieces. To connect the shaft, hold the button in while sliding the pieces together until they click into place. The top section (handle) of the paddle can be adjusted by opening and rotating the clip.

To find the ideal height for your paddle, start by building the paddle so it is 15cm/6 inches taller than your own height. From this point, adjust the top section up or down until the length is comfortable for you. A longer paddle is better suited for a smooth, easier paddling motion; a shorter paddle is good for performance or competition riding.

After closing the clip, if you find that the adjustable section is a little loose, please tighten the screw by opening and rotating the clip clockwise.

When using the paddle, position it so that the large W print is facing you, and the blade curves away.

REPAIR KIT



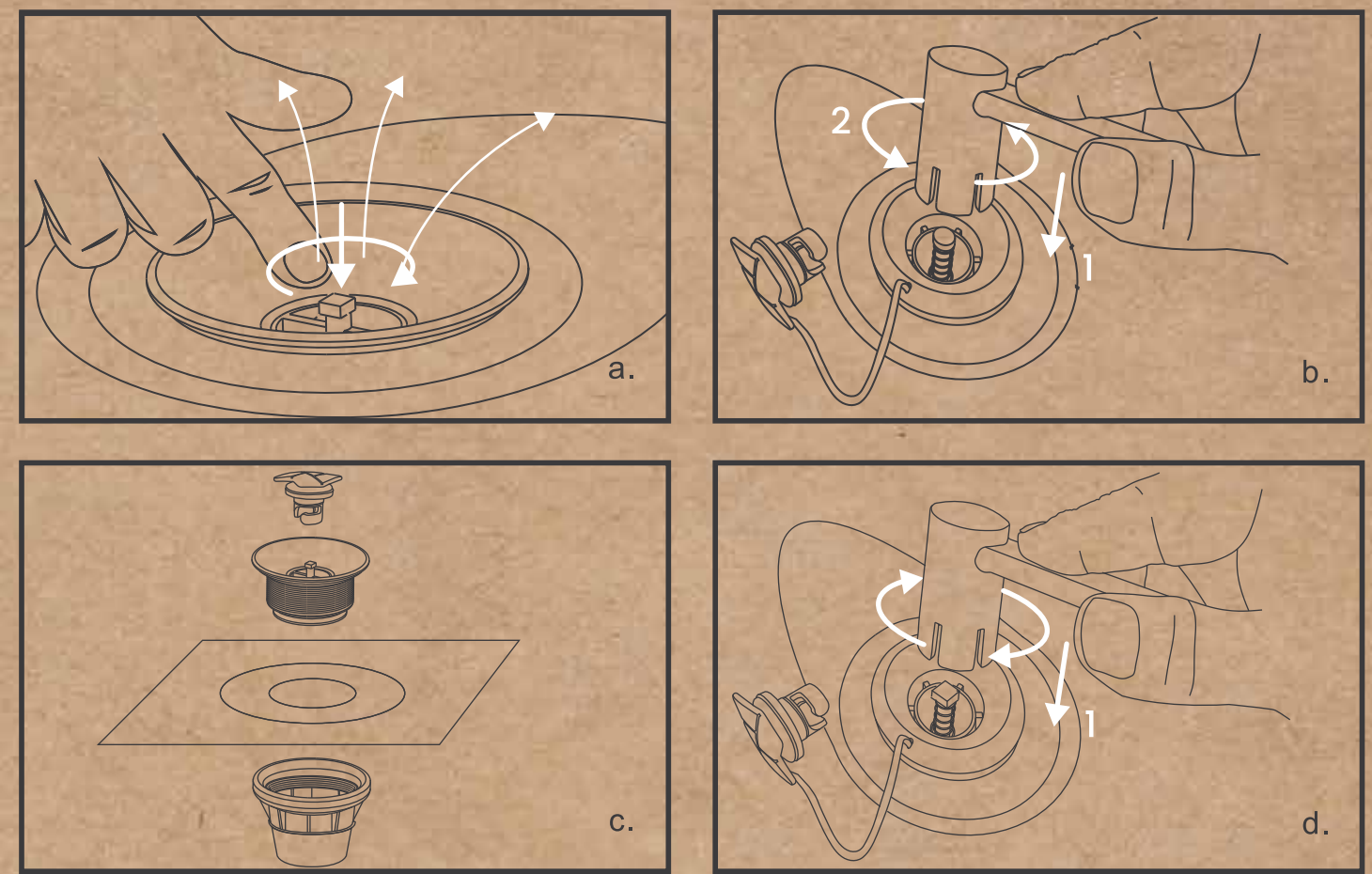
The Repair Kit includes glue, a PVC swatch and a valve tool.

To identify the location of a puncture, wipe across the surface of the SUP with soapy water to find holes (the soap will bubble over the hole).

To repair a puncture less than 10mm in size, firstly ensure the surface is clean and free of grease (use alcohol or acetone if required). Mark the position and deflate the SUP before repairing. Cut patch to a suitable size, allowing roughly 5cm around the puncture hole, with rounded corners. Apply glue evenly to the back of the patch and to the damaged area, making sure to cover the entire area where the patch will be placed. Excess glue can be removed afterwards with alcohol/acetone if necessary.

Allow the glue to dry until transparent, then press and hold the patch to the damaged area, smoothing the patch right to the edges to push out any bubbles. The glue will take around 20 minutes to cure, but it is recommended to leave the SUP for at least 24 hours or more before inflating.

VALVE REPAIR GUIDE



If there is air coming from the edge of the air valve, firstly try tightening the valve. Ensure the valve area is clean and free of debris. If there is still a leak, use the valve tool to tighten the valve, in a clockwise direction.

In the rare event that the valve is broken, deflate the SUP and then use the tool in an anticlockwise direction to release the valve. It can then be removed and a replacement valve can be fitted.

PRODUCT WARRANTY

Congratulations – your Wave SUP comes with a 2 Year warranty covering manufacturing faults, and is active from the date on which you receive the product. All Wave products are fully inspected, with no evident defects prior to leaving the factory.

If you purchased your SUP directly from Wave, our warranty is automatically activated. For purchases via a 3rd party seller, please register your warranty by sending an email with proof of purchase to warranty@wavesups.com

Warranty Policy

All warranty claims are subject to product assessment, we will only replace the Wave SUP after our team have been provided with the relevant evidence of the defect. In order to be directed to the relevant aftersales provider, you are required to submit a warranty claim directly with Wave.

This limited warranty does not apply to any defects resulting from negligence, accident, misuse, or other reason beyond Wave's control, included but not limited to: normal wear and tear, negligence or failure to follow the product instructions, improper or inadequate maintenance, chemical water damage, unauthorised product modification or repair, fire, lightning, flood or other external causes. Claims for consequential or incidental damages are also excluded from the warranty.

Warranty Claims

To submit a warranty claim, please email your enquiry including the below information to warranty@wavesups.com

Customer name
Order number
Customer address
Customer contact number
Customer email address
Proof of purchase
Photos of SUP inflated
Photo(s) of the problem

Concerns raised outside of the warranty period will not result in a repair, refund or replacement.

TROUBLESHOOTING

Fault	Solution
SUP won't fit in the backpack	Ensure you are folding the board as compactly as possible, corresponding to the size of the bag. If the issue persists, make sure all air has been expelled. Open the air valve and push in the air valve pin into 'deflate mode'. Starting at the end opposite the valve, and working your way towards the valve, fold the board following the printed fold guide, flattening the board as you go.
The fin won't fit into the fin slot	Check that the fin slot is free of debris that might be causing an obstruction. Take extra care when folding your SUP to ensure the fin slot is not bent when packing.
The fin is sliding out of the bracket	Ensure that you are using the fin clip to hold the fin in place in the bracket. The fin clip is a small piece of plastic attached to a string, suspended from the fin itself. This should neatly slot into a space midway along the fin bracket once the fin has been inserted; this will hold the fin in place and prevent it sliding out. You will hear a 'click' sound once the fin is fully secured.
There is water inside my SUP	Deflate your SUP, remove the air valve and lay your board, valve side down, in a cool, dry place with good ventilation for 24 hours to draw out any moisture from inside the SUP body.
There is air leaking from around the valve	Use the valve key included in your repair kit to latch onto the valve area (firstly ensuring the valve pin is pushed fully down), and tighten until it feels secure. Be careful not to over-tighten. Ensure your board is not inflated over 15 PSI – overinflation can cause structural damage to your SUP.