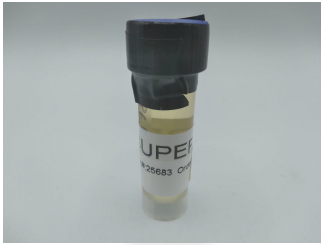


Xtracts LLC
 6165 Clarksville Pike
 Joelton, TN 37080
 nemo@x-tracts.com
 615-873-1344

Sample: 10-11-2022-25683
 Sample Received: 10/11/2022;
 Report Created: 10/12/2022; Expires: 10/12/2023

Super Spectrum
 Ingestible, Tincture



0.366%
 Total THC

0.366%
 Δ-9 THC

15.898 %
 Total Cannabinoids

7.782 %
 Total CBD

Cannabinoids

Complete

(Testing Method: HPLC, CON-P-3000)
 Date Tested: 10/11/2022

Analyte	LOD	LOQ	Mass	Mass	
	%	%	%	mg/g	
Δ-8-Tetrahydrocannabinol (Δ-8 THC)	0.0092	0.0138	4.435	44.347	<div style="width: 100%;"></div>
Δ-9-Tetrahydrocannabinol (Δ-9 THC)	0.0092	0.0138	0.366	3.662	<div style="width: 100%;"></div>
Δ-9-Tetrahydrocannabinolic Acid (THCA-A)	0.0092	0.0138	ND	ND	<div style="width: 100%;"></div>
Δ-9-Tetrahydrocannabinophorol (Δ-9-THCP)	0.0092	0.0138	ND	ND	<div style="width: 100%;"></div>
Δ-9-Tetrahydrocannabivarin (Δ-9-THCV)	0.0092	0.0138	ND	ND	<div style="width: 100%;"></div>
Δ-9-Tetrahydrocannabivarinic Acid (Δ-9-THCVA)	0.0092	0.0138	ND	ND	<div style="width: 100%;"></div>
R-Δ-10-Tetrahydrocannabinol (R-Δ-10-THC)	0.0039	0.0138	<LOQ	<LOQ	<div style="width: 100%;"></div>
S-Δ-10-Tetrahydrocannabinol (S-Δ-10-THC)	0.0039	0.0138	<LOQ	<LOQ	<div style="width: 100%;"></div>
9R-Hexahydrocannabinol (9R-HHC)	0.0092	0.0138	ND	ND	<div style="width: 100%;"></div>
9S-Hexahydrocannabinol (9S-HHC)	0.0092	0.0138	ND	ND	<div style="width: 100%;"></div>
Tetrahydrocannabinol Acetate (THCO)	0.0092	0.0138	ND	ND	<div style="width: 100%;"></div>
Cannabidivarin (CBDV)	0.0092	0.0138	0.018	0.185	<div style="width: 100%;"></div>
Cannabidivarinic Acid (CBDVA)	0.0092	0.0138	ND	ND	<div style="width: 100%;"></div>
Cannabidiol (CBD)	0.0092	0.0138	7.782	77.822	<div style="width: 100%;"></div>
Cannabidiolic Acid (CBDA)	0.0092	0.0138	ND	ND	<div style="width: 100%;"></div>
Cannabigerol (CBG)	0.0092	0.0138	2.850	28.503	<div style="width: 100%;"></div>
Cannabigerolic Acid (CBGA)	0.0092	0.0138	ND	ND	<div style="width: 100%;"></div>
Cannabinol (CBN)	0.0092	0.0138	0.028	0.279	<div style="width: 100%;"></div>
Cannabinolic Acid (CBNA)	0.0092	0.0138	ND	ND	<div style="width: 100%;"></div>
Cannabichromene (CBC)	0.0092	0.0138	0.418	4.183	<div style="width: 100%;"></div>
Cannabichromenic Acid (CBCA)	0.0092	0.0138	ND	ND	<div style="width: 100%;"></div>
Total			15.898	158.981	

Total THC = THCa * 0.877 + Δ9-THC; Total CBD = CBDa * 0.877 + CBD; LOQ = Limit of Quantitation; ND = Not Detected.

Total THC Measurement of Uncertainty: ± 0.040%
 Total CBD Measurement of Uncertainty: ± 2.000%
 THCO potency analysis does not designate quantitative specificity of Δ-8-THCO and Δ-9-THCO isomers



New Bloom Labs
 6121 Heritage Park Drive, A500
 Chattanooga, TN 37416
 (844) 837-8223
 TN DEA#: RN0563975

Natalie Siracusa
 Natalie Siracusa
 Laboratory Director

New Bloom Labs
 10606 Shady Trail, 105
 Dallas, TX 75520
 (844) 837-8223
 TX DEA#: RN0594653

Powered by
 reLIMS
 info@relims.com