

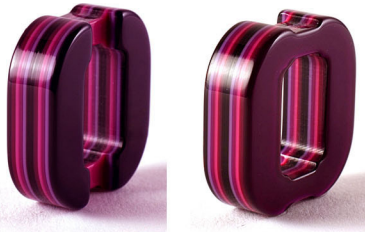
Les double-face



C 109



C 114



C 115



C 117



C 118



C 119



C 120



C 138



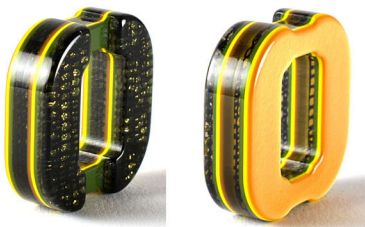
C 157 R



C 158 R



C 163



C 164

Les colorés



C 08



C 30



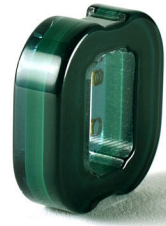
C 44



C 45



C 47



C 69



C 70



C 73



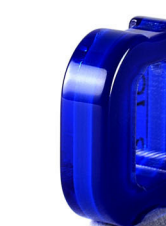
C 79



C 100



C 101



C 102



C 103



C 104



C 105



C 106



C 121



C 125



C 126



C 127



C 230



C 231



C 232



C 233



C 139



C 140



C 176



C 177



C 178



C 179



C 180



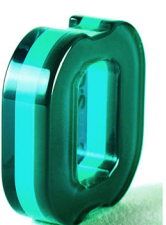
C 181



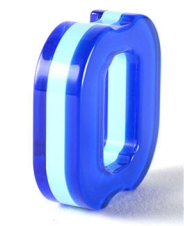
C 204



C 205



C 208



C 209

Les motifs



C 14



C 29



C 39



C 80



C 128



C 129



C 130

Les nacres



C 257



C 258



C 259



C 261



C 262



C 263

Les multicouches



C 239



C 240



C 241



C 242



C 243



C 244

