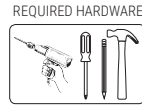
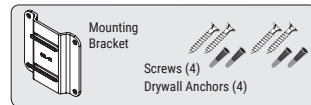


Specifications	
Band 1	Airlink
Downlink (DL) Frequency (MHz)	2110 - 2170
Uplink (UL) Frequency	1920 - 1980
Per channel signal bandwidth (MHz)	20
Duplex separation (MHz)	190
Technology	HSPA & LTE
Band 3	
Downlink (DL) Frequency (MHz)	1805 - 1880
Uplink (UL) Frequency	1710 - 1785
Per channel signal bandwidth (MHz)	20
Duplex separation (MHz)	95
Technology	HSPA & LTE
Band 7	
Downlink (DL) Frequency (MHz)	2620 - 2690
Uplink (UL) Frequency	2500 - 2570
Per channel signal bandwidth (MHz)	20
Duplex separation (MHz)	120
Technology	LTE
Band 8	
Downlink (DL) Frequency (MHz)	925 - 960
Uplink (UL) Frequency	880 - 915
Per channel signal bandwidth (MHz)	15
Duplex separation (MHz)	45
Technology	HSPA & LTE
Band 20	
Downlink (DL) Frequency (MHz)	791 - 821
Uplink (UL) Frequency	832 - 862
Per channel signal bandwidth (MHz)	20
Duplex separation (MHz)	-41
Technology	LTE
	Power
Downlink Power - All Bands	20 dBm
Uplink Power - Bands 1, 3, 7	24 dBm
Uplink Power - Bands 8, 20	22 dBm
	Environmental
Operating Temperature	0 - 40 °C
Relative Humidity Non-condensing	0 - 95
RoHS (EU and China)	Yes
CE	Yes
IP Rating	20
	Mechanical
LxWxH (mm)	80 x 158 x 163
Weight	
Cooling	Convection
IP Rating	20
Surface Temp Max	44 °C
	Radio Performance
Noise Figure	7dB
Return Loss	-8dB
	Antenna Ports
Frequency	698MHz - 2700MHz
Impedance	20 Ohms
Connector	SMA Female
Port Isolation	110dB

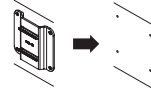
qsp-solo_eng_19-0212

Mounting Instructions

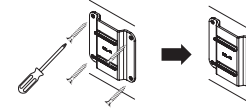


NOTE: This package comes equipped with screws and drywall anchors for mounting in standard drywall. Before you install the mounts, make sure there are no wires or other objects, or metal plates, behind the drywall that may interfere with the inserts, screws, mount, or mounted units.

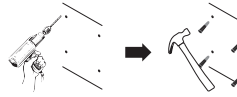
1 Determine Cel-Fi SOLO location. (Refer to Installation section). Determine mounting hole locations.



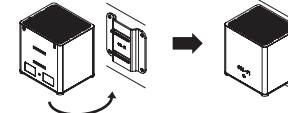
3 Install mounting brackets.



2 In each marked spot, use a 3/16" drill bit to drill guide holes for the anchors. Install anchors (Drywall).



4 Attach the Cel-Fi SOLO to the wall mounted bracket.



Additional Antenna Options

Review the latest authorized antennas at: www.cel-fi.com/antennas

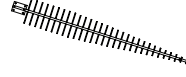
Cel-Fi Indoor Omni Donor Antenna
A52-V32-100



Cel-Fi Wideband Panel Antenna
A11-V43-100



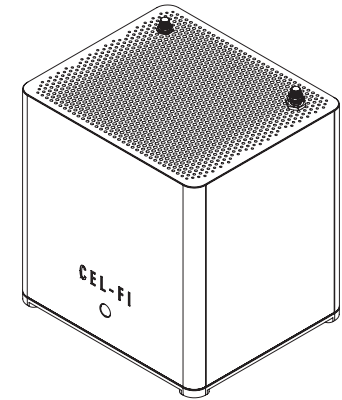
Cel-Fi LPDA Antenna
A32-V32-100



Cel-Fi Wideband Directional Antenna
A62-V44-100



Cel-Fi™ SOLO Quick Start Guide



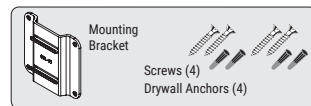
Box Contents:

- Quick Start Guide
- Cel-Fi SOLO Unit
- Mounting Bracket
- AC Adapter
- Whip Antenna
- Patch Antenna

Specifications	
Band 1	Airlink
Downlink (DL) Frequency (MHz)	2110 - 2170
Uplink (UL) Frequency	1920 - 1980
Per channel signal bandwidth (MHz)	20
Duplex separation (MHz)	190
Technology	HSPA & LTE
Band 3	
Downlink (DL) Frequency (MHz)	1805 - 1880
Uplink (UL) Frequency	1710 - 1785
Per channel signal bandwidth (MHz)	20
Duplex separation (MHz)	95
Technology	HSPA & LTE
Band 7	
Downlink (DL) Frequency (MHz)	2620 - 2690
Uplink (UL) Frequency	2500 - 2570
Per channel signal bandwidth (MHz)	20
Duplex separation (MHz)	120
Technology	LTE
Band 8	
Downlink (DL) Frequency (MHz)	925 - 960
Uplink (UL) Frequency	880 - 915
Per channel signal bandwidth (MHz)	15
Duplex separation (MHz)	45
Technology	HSPA & LTE
Band 20	
Downlink (DL) Frequency (MHz)	791 - 821
Uplink (UL) Frequency	832 - 862
Per channel signal bandwidth (MHz)	20
Duplex separation (MHz)	-41
Technology	LTE
	Power
Downlink Power - All Bands	20 dBm
Uplink Power - Bands 1, 3, 7	24 dBm
Uplink Power - Bands 8, 20	22 dBm
	Environmental
Operating Temperature	0 - 40 °C
Relative Humidity Non-condensing	0 - 95
RoHS (EU and China)	Yes
CE	Yes
IP Rating	20
	Mechanical
LxWxH (mm)	80 x 158 x 163
Weight	
Cooling	Convection
IP Rating	20
Surface Temp Max	44 °C
	Radio Performance
Noise Figure	7dB
Return Loss	-8dB
	Antenna Ports
Frequency	698MHz - 2700MHz
Impedance	20 Ohms
Connector	SMA Female
Port Isolation	110dB

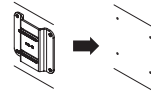
qsp-solo_eng_19-0212

Mounting Instructions

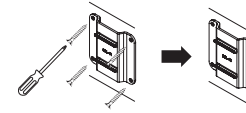


NOTE: This package comes equipped with screws and drywall anchors for mounting in standard drywall. Before you install the mounts, make sure there are no wires or other objects, or metal plates, behind the drywall that may interfere with the inserts, screws, mount, or mounted units.

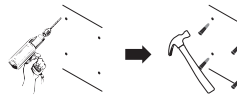
1 Determine Cel-Fi SOLO location. (Refer to Installation section). Determine mounting hole locations.



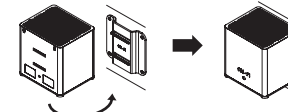
3 Install mounting brackets.



2 In each marked spot, use a 3/16" drill bit to drill guide holes for the anchors. Install anchors (Drywall).



4 Attach the Cel-Fi SOLO to the wall mounted bracket.



Additional Antenna Options

Review the latest authorized antennas at: www.cel-fi.com/antennas

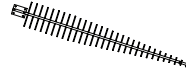
Cel-Fi Indoor Omni Donor Antenna
A52-V32-100



Cel-Fi Wideband Panel Antenna
A11-V43-100



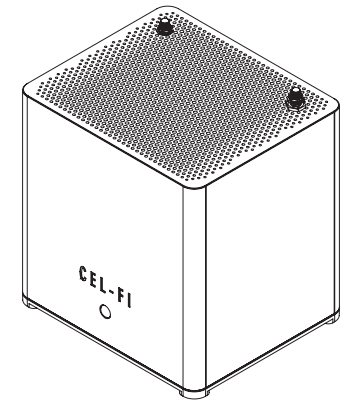
Cel-Fi LPDA Antenna
A32-V32-100



Cel-Fi Wideband Directional Antenna
A62-V44-100



Cel-Fi™ SOLO Quick Start Guide



Box Contents:

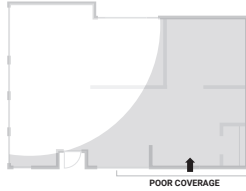
- Quick Start Guide
- Cel-Fi SOLO Unit
- Mounting Bracket
- AC Adapter
- Whip Antenna
- Patch Antenna

Cel-Fi™ SOLO Installation

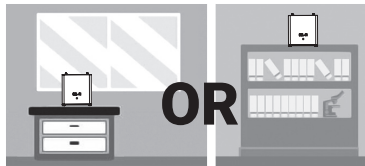
IMPORTANT: Your **Cel-Fi SOLO** is electronic equipment. The **Cel-Fi SOLO** must be kept indoors and in a dry, cool, well ventilated area.

1 Define Coverage Problem

Determine where coverage is needed.



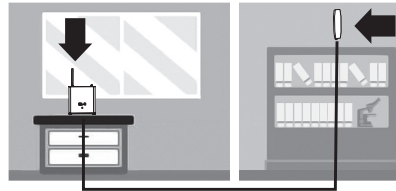
2 Place Main Unit



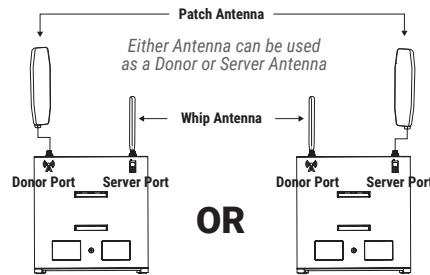
Place the Main Unit where signal exists (i.e. window). This will be the Donor Signal. Alternatively the Patch Antenna can be placed here, and the Main Unit can be placed at a distance.

Included In the Box
Other variations of the product package may include additional internal and external antennas or components.

3 Attach Server and Donor Antennas



Attach the Whip and Patch antennas accordingly.



4 Plug In Cel-Fi SOLO



Plug-in the unit to power. The LED on the front will blink during setup.

5 Cel-Fi WAVE App



The Cel-Fi WAVE app can be used to optimize the Cel-Fi SOLO's performance.

The antenna locations can be adjusted or relocated and system performance quickly assessed via the Cel-Fi WAVE app.

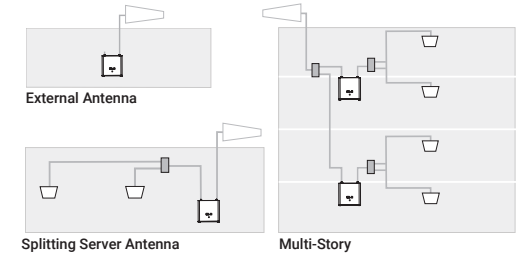
Advanced Install

For best results, separate the donor and server antenna(s) as much as possible. Antenna separation (*isolation*) can be achieved with either physical distance or by having materials (like a wall) between the antennas.

Make sure any cables, splitters, and antennas used in the system are properly matched. (Cel-Fi SOLO is rated for 50Ω)

Recommend

- > 30dBm port-isolation for any splitter
- Downlink power should be:**
- > 0dBm to use a two-way splitter
- > 3dBm to use a four-way splitter



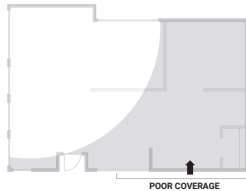
Copyright © 2019 by Nextivity, Inc. U.S. Patents pending. All rights reserved. The Nextivity and Cel-Fi logos are registered trademarks of Nextivity Inc. All other trademarks or registered trademarks listed belong to their respective owners. Designed by Nextivity Inc in California.

Cel-Fi™ SOLO Installation

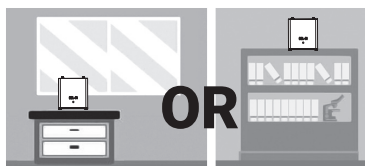
IMPORTANT: Your **Cel-Fi SOLO** is electronic equipment. The **Cel-Fi SOLO** must be kept indoors and in a dry, cool, well ventilated area.

1 Define Coverage Problem

Determine where coverage is needed.



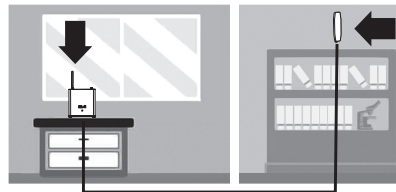
2 Place Main Unit



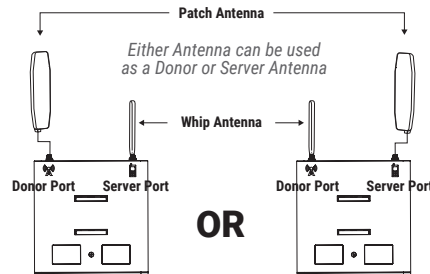
Place the Main Unit where signal exists (i.e. window). This will be the Donor Signal. Alternatively the Patch Antenna can be placed here, and the Main Unit can be placed at a distance.

Included In the Box
Other variations of the product package may include additional internal and external antennas or components.

3 Attach Server and Donor Antennas



Attach the Whip and Patch antennas accordingly.

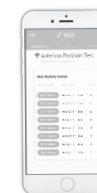


4 Plug In Cel-Fi SOLO



Plug-in the unit to power. The LED on the front will blink during setup.

5 Cel-Fi WAVE App



The Cel-Fi WAVE app can be used to optimize the Cel-Fi SOLO's performance.

The antenna locations can be adjusted or relocated and system performance quickly assessed via the Cel-Fi WAVE app.

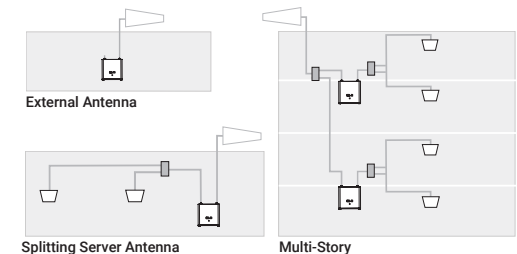
Advanced Install

For best results, separate the donor and server antenna(s) as much as possible. Antenna separation (*isolation*) can be achieved with either physical distance or by having materials (like a wall) between the antennas.

Make sure any cables, splitters, and antennas used in the system are properly matched. (Cel-Fi SOLO is rated for 50Ω)

Recommend

- > 30dBm port-isolation for any splitter
- Downlink power should be:**
- > 0dBm to use a two-way splitter
- > 3dBm to use a four-way splitter



Copyright © 2019 by Nextivity, Inc. U.S. Patents pending. All rights reserved. The Nextivity and Cel-Fi logos are registered trademarks of Nextivity Inc. All other trademarks or registered trademarks listed belong to their respective owners. Designed by Nextivity Inc in California.