

CEL-FI™  
**GO** G41

**3G/4G/5G**

Smart Signal Repeater



Performance Leadership

Ease of Install

Leaders in Value

Fast Set Up

Carrier Grade Approved

# The First Carrier-Class 3G/4G/5G Cellular Coverage Solution to Boost TDD and FDD

Designed to solve cellular coverage issues for indoor environments, the Cel-Fi GO G41 Smart Signal Repeater is the most powerful carrier-grade solution available. Providing up to 100 dB gain, GO G41 offers class-leading 3G/4G/5G voice and data performance. GO G41 also supports 5GNR operation for seamless network migration and consistent connectivity. In addition to providing cellular coverage up to 3,000 m<sup>2</sup> (1,500 m<sup>2</sup> in U.K.) when configured with the included donor and server antennas, the system can be expanded with outdoor or additional server antennas for an increased coverage footprint. Plus, GO G41 is network safe and the easiest solution to install.

## Industry-Leading Signal Gain

Leveraging Nextivity's award-winning IntelliBoost® chipset, which is engineered to deliver unmatched cellular performance, GO G41 provides up to 100 dB signal gain (depending on the region). This output is over 1000x stronger than any competitor.

Model #	Kit #	Bands	Kit #	Items included:
G41-9E	-001	1, 3, 7, 8, 20	-001	<ul style="list-style-type: none"> <li>GO G41 Unit</li> <li>Power Adaptor</li> <li>Whip Antenna (A21-V33-100)</li> <li>Patch Antenna with 8M Cable (A51-100-100)</li> </ul>
	-002			
	-003			
G41-JE	-001	1, 3, 5, 7, 8, 28L, 40	-002	<ul style="list-style-type: none"> <li>GO G41 Unit</li> <li>Power Adaptor</li> <li>Whip Antenna (A21-V33-100)</li> <li>Patch Antenna with 1M Cable (A51-101-100)</li> </ul>
	-002			
	-003			
G41-NE	-001	1, 3, 5, 7, 28U, 40	-003	<ul style="list-style-type: none"> <li>GO G41 Unit</li> <li>Power Adaptor</li> </ul>
	-002			
	-003			



**Maximum Gain:** Industry-Leading Signal Gain up to 100 dB for 3G/4G/5G Voice and Data

**Best Performance:** Smart Signal Repeater with IntelliBoost® Chipset Smart Technology

**Cellular Coverage:** Up to 3,000 m<sup>2</sup> (1,500 m<sup>2</sup> in U.K.) per Unit for Buildings, Residential, Remote, and IoT

**Ease of Set Up:** 6 Steps for Installers and Maximized by AntennaBoost for Optimum System Performance

**Cel-Fi WAVE:** Mobile Device Application for System Set Up

**DSS:** Support for Dynamic Spectrum Sharing

**Network Safe:** Carrier Approved with No Noise Guarantee

Antenna Position Test			
Captured Measurements			
Position 1	LTE	77.021	Optimal
Position 2	LTE	96.007	Optimal
Position 3	LTE	81.995	Optimal
Position 4	LTE	113.435	Optimal
Position 5	LTE	110.953	Optimal
Position 6	LTE	90.994	Optimal
Position 7	LTE	112.755	Optimal
Position 8	LTE	115.996	Optimal

# Flexibility at Your Fingertips

## Antenna Positioning

To optimize your antenna using real-time data and achieve best possible performance, Nextivity's proprietary 8-position dial base in WAVE's Antenna Position Test allows you to compare signal strength when rotating the antenna in 45-degree increments.

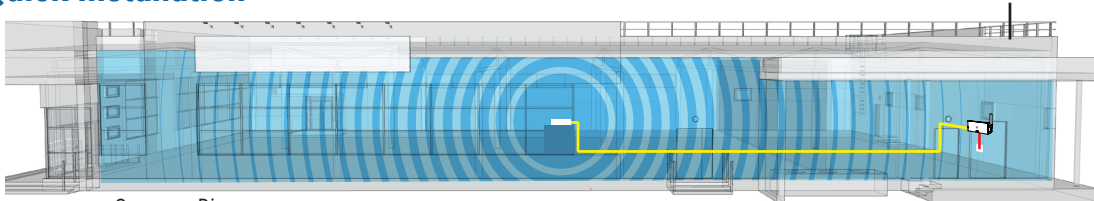
# Pair the Cel-Fi GO with Cel-Fi Antennas to Create the Ideal Solution that Optimizes Performance and Streamlines Installation

## Cel-Fi GO bundles are perfect for:

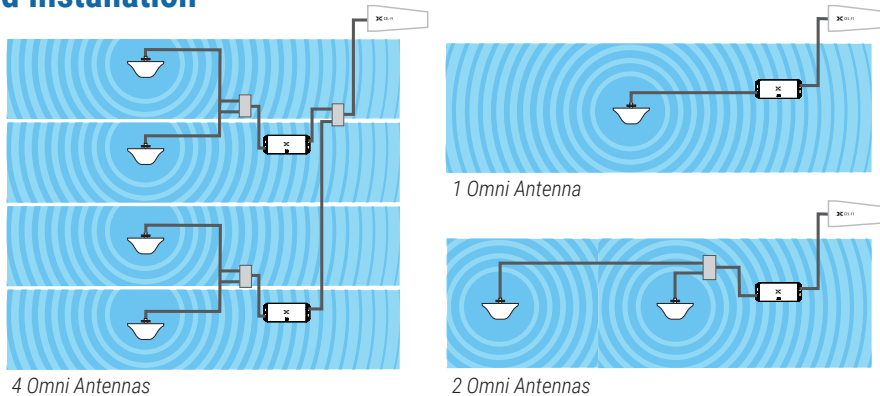
- Government buildings
- Agricultural settings
- Parking garages
- IoT and M2M (machine to machine)
- Small manufacturing operations
- Business in single / multi-level commercial properties
- Remote or rural locations
- Large homes

Combined with either Cel-Fi Omni Dome Antenna(s) for ceiling mounting or Cel-Fi Wideband Panel Antenna(s) for wall mounting, the Cel-Fi GO G41 and Cel-Fi Wideband Directional Antenna is the perfect in-building, remote, and IoT solution. Additional server antennas are available for venues with more floors or dense interior walls. For areas that suffer from extremely poor outdoor signal, the high gain LPDA-R Antenna is available.

## Quick Installation



## Advanced Installation



## Optional Antennas for Advanced Installations



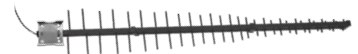
**Cel-Fi Wideband Panel Antenna**  
A11-V43-100



**Cel-Fi Wideband Directional Antenna**  
A32-V32-100



**Cel-Fi Indoor Omni Antenna**  
A52-V32-100



**Cel-Fi LPDA-R Antenna**  
A62-V44-200

### 6-STEP SET UP

**Step 1:**  
Install Server Antennas with Cable

**Step 2:**  
Install Donor Antennas with Cable

**Step 3:**  
Mount Cel-Fi GO

**Step 4:**  
Connect Donor & Server Antennas with Splitter to the Cel-Fi GO

**Step 5:**  
Connect the AC Power Source



**Step 6:**  
Activate & Optimize Set Up with Cel-Fi WAVE

brief\_go-G41-repeater\_21-1216