

# KAIA

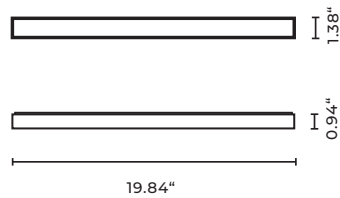
## SIM

### INSTALLATION MANUAL

MAINLY SUITABLE FOR INSTALLATION ON PLASTER WALLS AND JOINERY.  
FOR FURTHER INFORMATION PLEASE CONTACT SALES@KAIALIGHTING.COM.

#### SIM

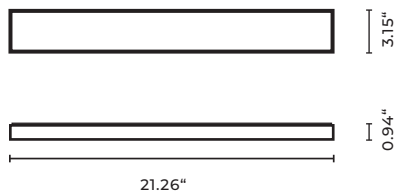
Frame Small 50



Type	Wall/ Ceiling light
Material	Solid brass
Environment	Indoors
Dimensions	19.84 x 1.38 x 0.94"
Weight	3.31 lb
Certification	IP44 CE, LED Panel UL listed
Lamping*	LED technology: 24V, 7W, 2700K, dimmable, 742lm
PSU Dimensions	5.90 x 2.08 x 1.38"

#### SIM

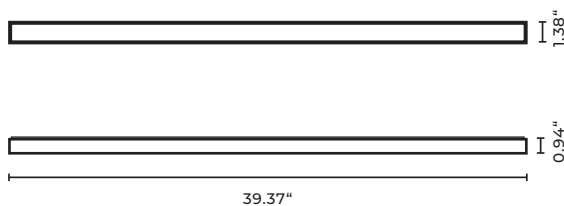
Frame Large 50



Type	Wall/ Ceiling light
Material	Solid brass
Environment	Indoors
Dimensions	21.26 x 3.15 x 0.94"
Weight	4.41 lb
Certification	IP44 CE, LED Panel UL listed
Lamping*	LED technology: 24V, 14W, 2700K, dimmable, 1500lm
PSU Dimensions	5.90 x 2.08 x 1.38"

#### SIM

Frame Small 100

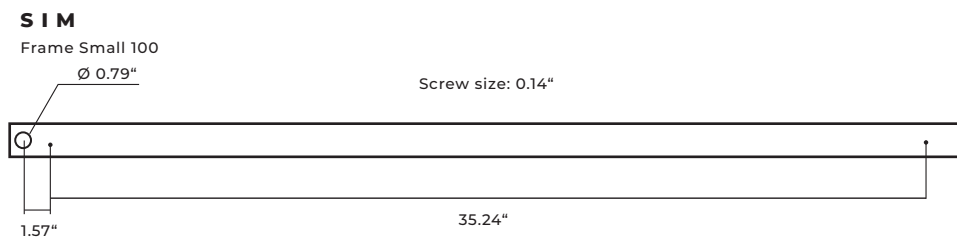
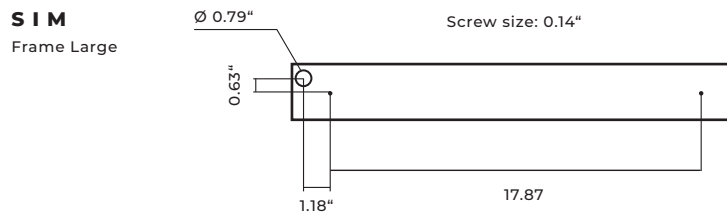
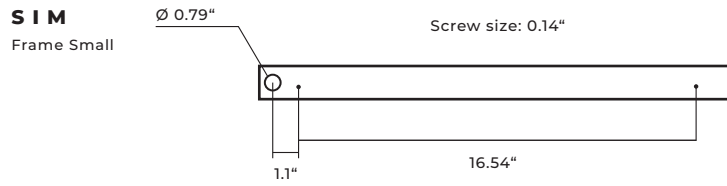


Type	Wall/ Ceiling light
Material	Solid brass
Environment	Indoors
Dimensions	39.37 x 1.38 x 0.94"
Weight	4.41 lb
Certification	IP44 CE, LED Panel UL listed
Lamping*	LED technology: 24V, 14W, 2700K, dimmable, 1484lm
PSU Dimensions	5.90 x 2.08 x 1.38"

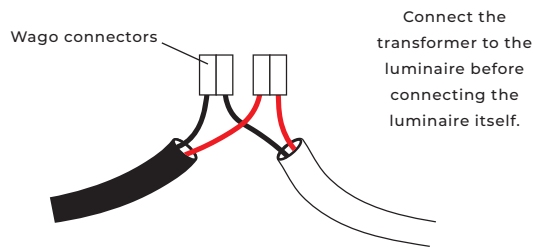
## INSTALLATION

Before commencing installation ensure the relevant mains supply has been safely isolated/disconnected. Installation should be carried out by a qualified electrician. Ensure all electrical connections are tight with no loose strands, including factory made connections. **The Mains power must only be switched on once the fitting has been electrically connected to the driver.**

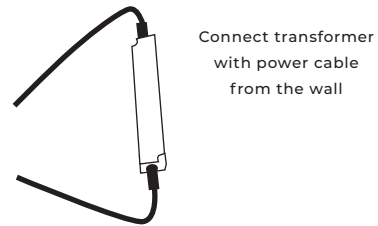
## FEEDHOLE AND SCREW POSITIONS



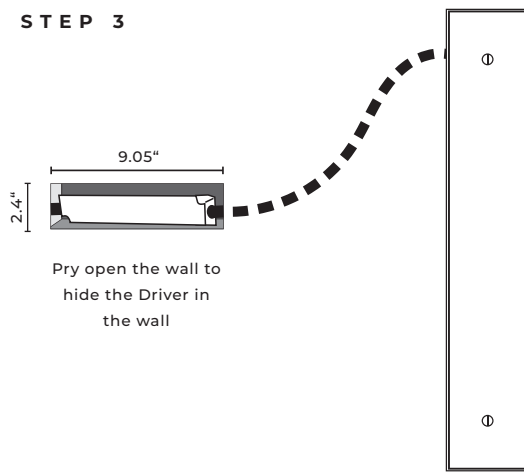
### STEP 1



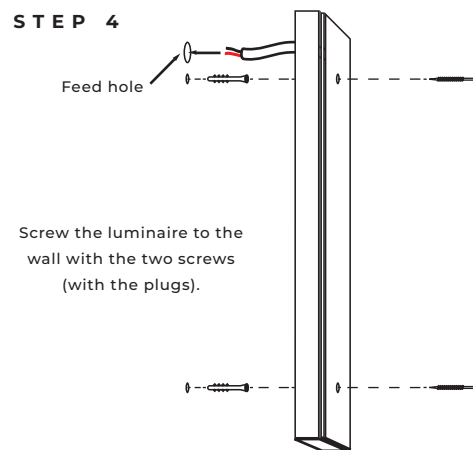
### STEP 2



### STEP 3



### STEP 4



### CARE INSTRUCTIONS

1. Use a soft dry cloth to ensure a fingerprint free surface. We recommend the use of micro fibre cloths.
2. Warning: do not use alcohol or other solvents for cleaning.
3. For destinations with Mediterranean climate we highly recommend a brushed and lacquered brass finish.

### DRIVER LOCATION

Lights supplied with an external non-dim 24V driver as standard. Additional dimmer needs to be specified. The PSU are external separate components, dimensions are the following: length: 5.90", width: 2.08", height: 1.38".

\* Please contact [sales@kaialighting.com](mailto:sales@kaialighting.com) for further information on dimmers, transformers etc. Please note KAIA Ltd cannot take any responsibility for the connection with your dimming or central control system. It is the customer's responsibility to ensure the compatibility with their systems.

\*\* Lighting fixtures designed for the indoor environment up to 24 °Celsius.