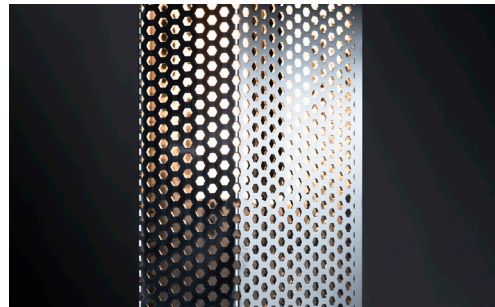
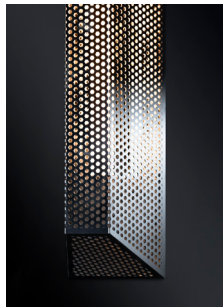
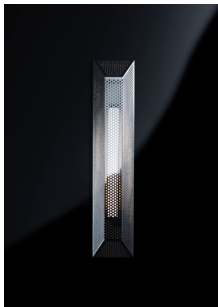


# KAIA

## TRAP

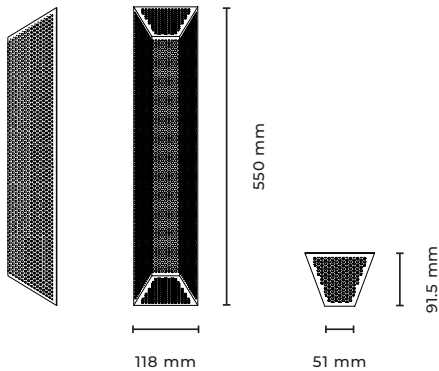
Designed by KAIA x GSL  
2024



Born from the unique design of 'Empyrean', 'Trap' is a perforated, polished stainless steel sconce housing a KAIA classic, NEA. In opposition to its counterpart, 'Trap' encloses the warm glow of its LED lamp to provide a soft, indirect light source which is subtle for both internal and external applications. It will be added to KAIA's eclectic collection items.

## TRAP

30



Type	Wall/ Ceiling light
Material	Stainless Steel
Environment	Indoors
Dimensions	550 x 118 x 91.5 mm
Weight	1.8 kg
Certification	IP20 CE; ETL US/CSA Canada
Bathroom	Zone 3
EU/UK - US	230 V - 110 V
Lamps	max. 60W, S14d, our suggestion: 3,1W, 1x linear opal LED, 2700K, 275lm, Mains (Phase) dimmable* EPREL ID 566201, 522905;
US Lamps	US: Glass lamps not available. Please inquire
Standard finishes:	polished nickel
302 01 101	

\* Please contact [sales@kaialighting.com](mailto:sales@kaialighting.com) for further information on dimmers, transformers etc. Please note KAIA Ltd cannot take any responsibility for the connection with your dimming or central control system. It is the customer's responsibility to ensure the compatibility with their systems.

\*\* Lighting fixtures designed for the indoor environment up to 24 ° Celsius.