

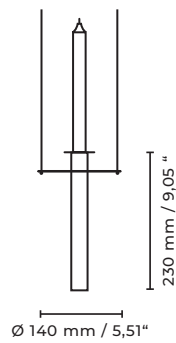
KAIA

CANDLELIGHT

INSTALLATION MANUAL

CANDLELIGHT

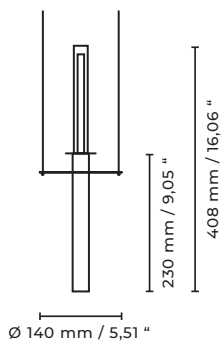
without Glass Candle



Type	Suspension light
Material	Brass
Environment	Indoors
Dimensions	Ø 140 x 230 mm - 5,51 x 9,05 "
Cable length	2500 mm - 98"
Weight	0.6 kg - 1,32 lb
Certification	IP20 CE
US	24 V
Ceiling Rose	Ø 160 x 25 mm - 6,39 x 0,98 "
Lamps	LED technology, 12 V, 7 W, 1800-2700 K, 400 lm, dim to warm, dimmable with gesture control
Candle	wax candle

CANDLELIGHT

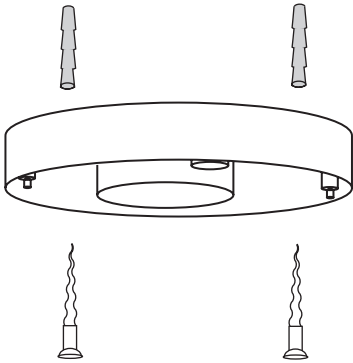
with Glass Candle



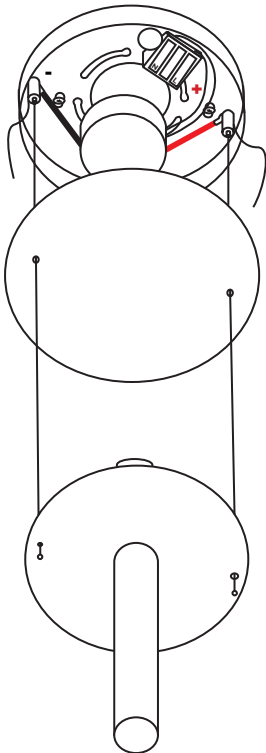
Type	Suspension light
Material	Brass
Environment	Indoors
Dimensions	Ø 140 x 230 mm - 5,51 x 9,05 "
Cable length	2500 mm - 98"
Weight	0.6 kg - 1,32 lb
Certification	IP20 CE
US	24 V
Ceiling Rose	Ø 160 x 25 mm - 6,39 x 0,98 "
Lamps	LED technology, 12 V, 7 W, 1800-2700 K, 400 lm, dim to warm, dimmable with gesture control
Candle	Glass candle with invisible light source. LED technology, flickering light, 1800K, 2W and wax candle

* For project business available without gesture control. Contact sales@kaialighting.com for further information.

STEP 1



STEP 2



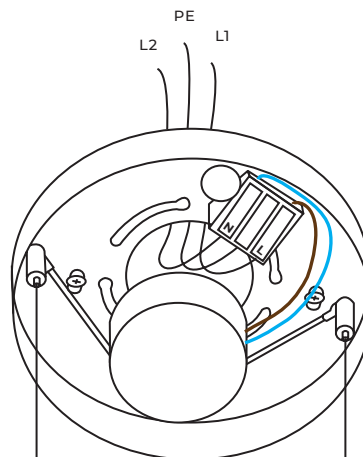
INSTALLATION

Before commencing installation ensure the relevant mains supply has been safely isolated/disconnected. Installation should be carried out by two persons and at least one qualified electrician. Ensure all electrical connections are tight with no loose strands, including factory made connections.

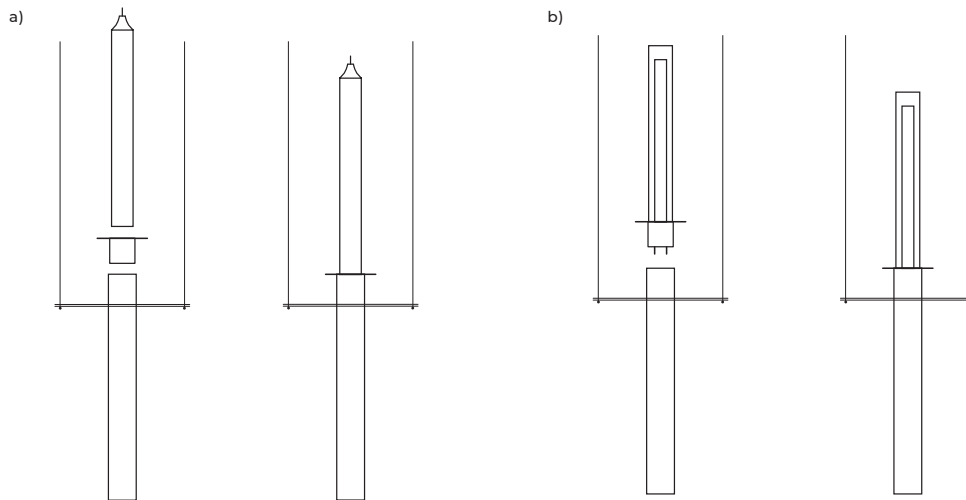
Use supplied fabric gloves to prevent any stains on the surface of the lamp. Due to risk of glass fracture handle the lamp with care!

1. Fix the base plate to the mounting surface. Ensure the fixing points can support the weight of the fixture.
2. Thread the wires first through the holes in the lamp body, followed by the top plate, and then through the wire fixing. Make sure that the wires are going to the right fixing: small opening = black wire (-) larger hole = red wire (+)
Leave the wire about 1cm long and cut off the rest. Slide the silicone tube over the end of the cable and make sure that the wires do not touch the ceiling rose.
3. Connect the unit to the mains.
Afterwards fix the magnetic top plate.
4. Place a) the wax or b) the Glass candle on the lamp. Make sure that the plugs are in the correct position before inserting the Glass candle downwards.
5. Gesture Control: The light can be switched on and off by moving your hand horizontally towards and away from the sensor. By holding it for a while you can dim the light.

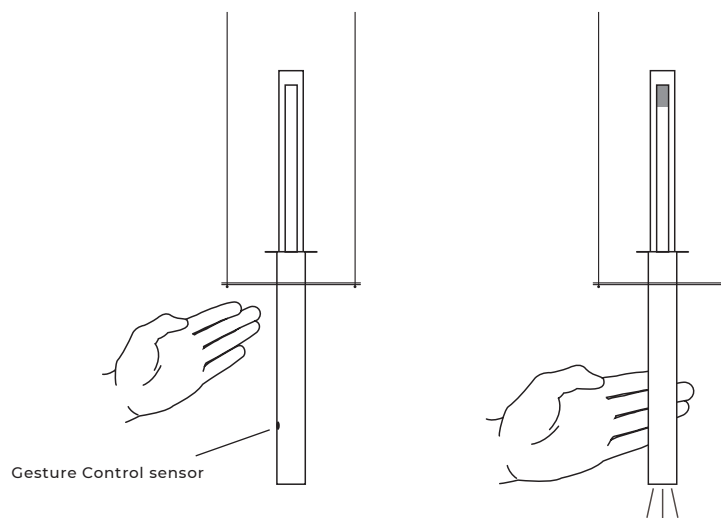
STEP 3



STEP 4 SIDE VIEW



STEP 5 SIDE VIEW



CARE INSTRUCTIONS

* On very rare occasions, these lamps may appear to have a slight buzzing or flickering. As is the case with all retro LED lamps, this is likely caused by a number of outside influences such as incorrect installation, wiring, dimming or transformers and in some instances low electrical resistance.

** Please contact sales@kaialighting.com for further information on dimmers etc. Please note KAIA Ltd cannot take any responsibility for the connection with your dimming or central control system. It is the customer's responsibility to ensure the compatibility with their systems.