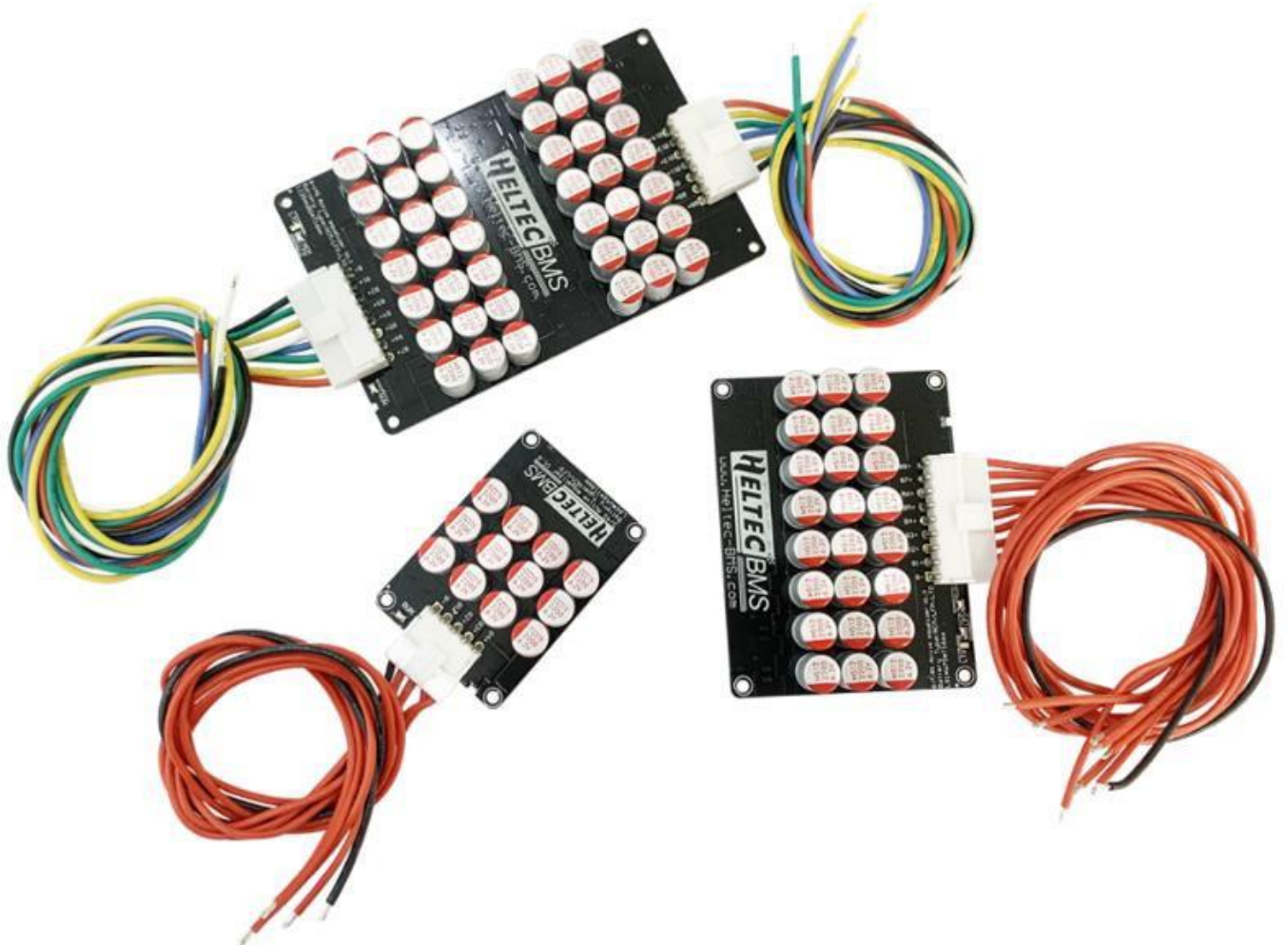


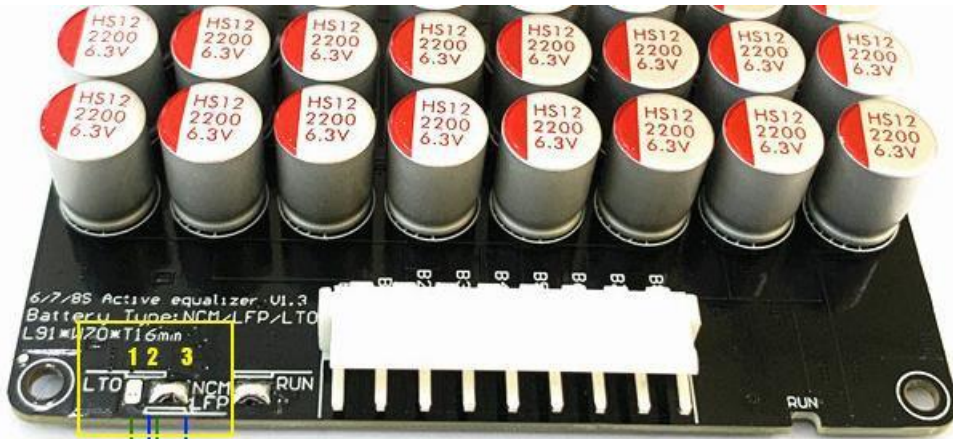
5A Active Balancer Manual

Website: www.Heltec-BMS.com



The New Version with connector all can be used on Lipo/Lifepo4/LTO, Except the 4S only design for lipo /Lifepo4

- See Below : How to make the balancer used on LTO



2+3 Weld this point is for NCM/LFP
Generally the default is the state of welding

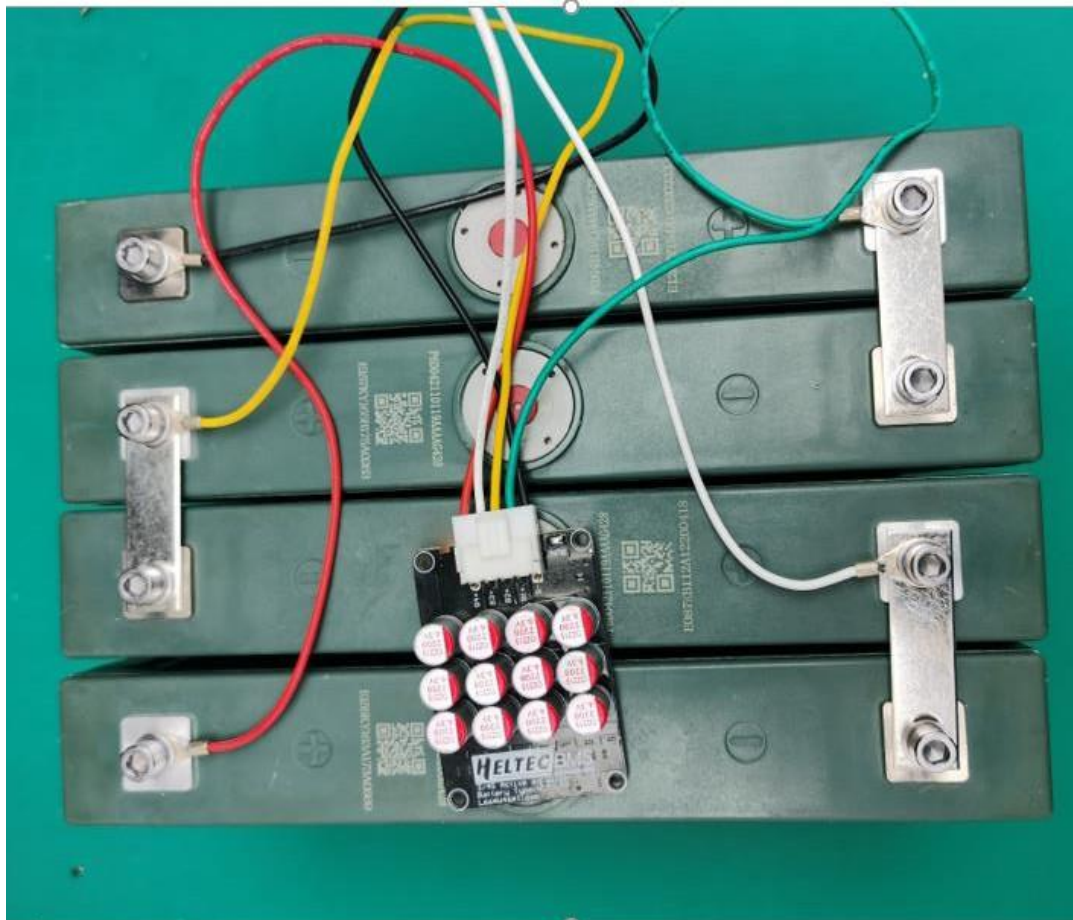
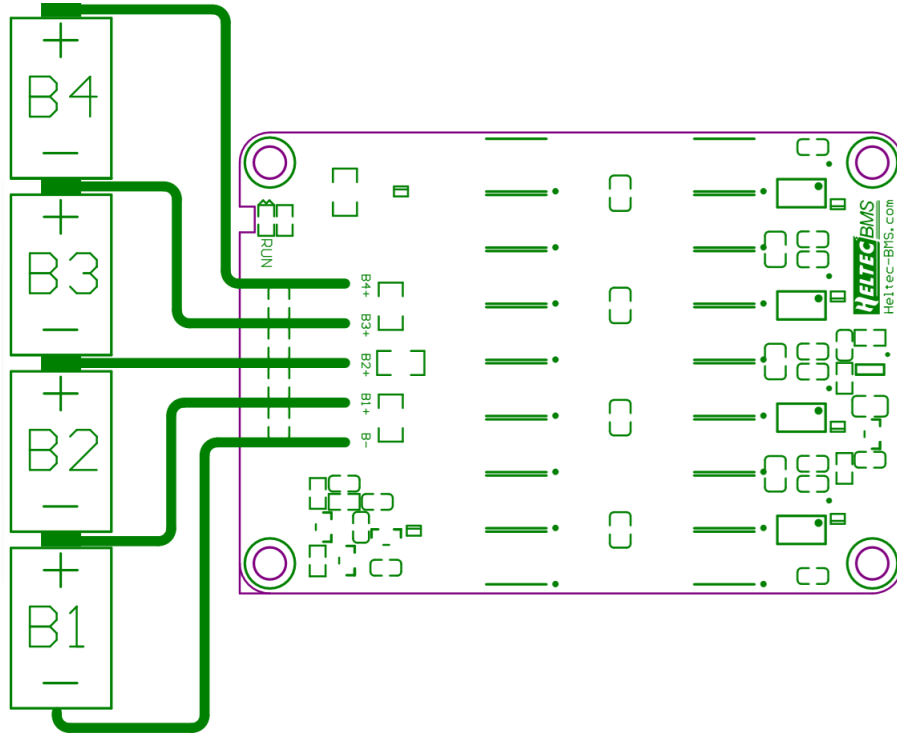
1+2 Weld this point is for LTO
*If the user needs to use LTO,
*after disconnecting point 2 and point 3,
*please connect point 1 and point 2 by yourself

● Feture:

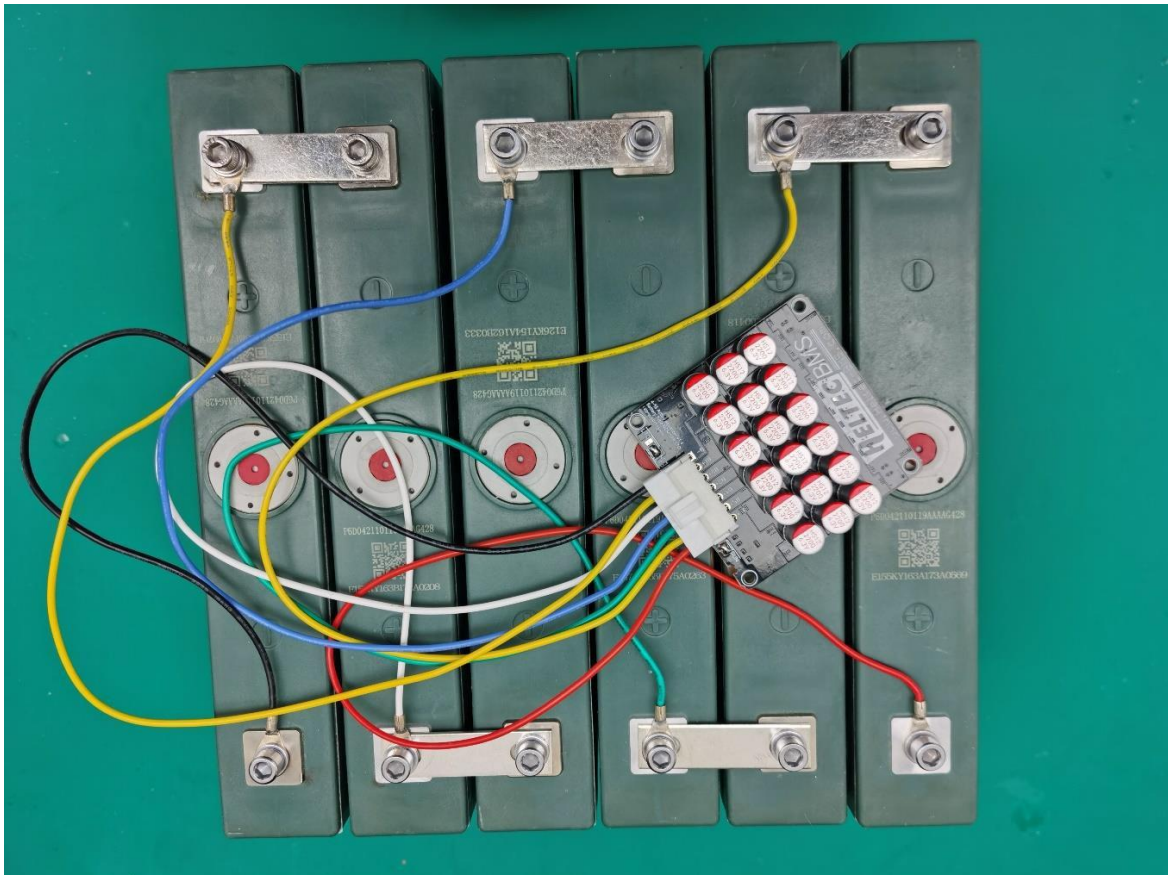
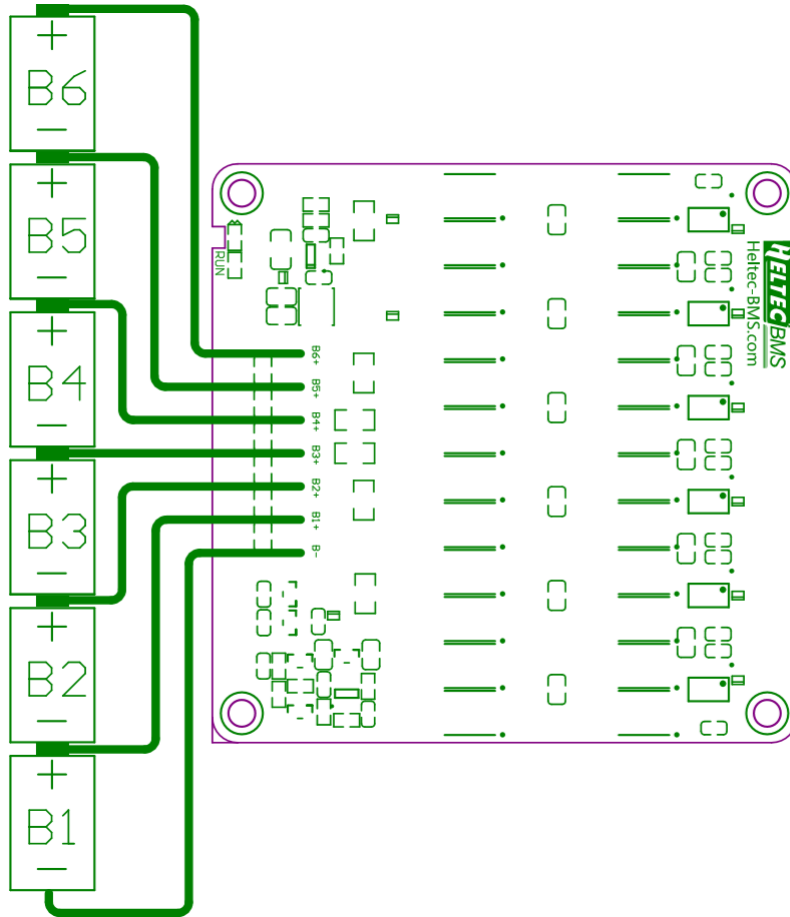
Technical index	Product model					
	4S	6s	8s	14S	17S	21S
Applicable string number	3S-4S	4S-6S	6S-8S	9S-14S	13S-17S	17S-21S
Applicable battery type	NCM/LFP/LTO					
Working range of single voltage	NCM/LFP : 3.0-4.2V LTO : 1.8-3.0V					
Voltage equalization accuracy	5mv (typical)					
Balanced mode	The whole battery participates in the active equalization of energy transfer at the same time					
Equalizing current	0.08V differential voltage 1A balance current. The differential voltage is bigger that the balance current is bigger. The maximum allowable balance current is 6A					
Under voltage protection sleep voltage	NCM/LFP:3.0V LTO : 1.8V					
Static working current	13mA	8mA	8mA	15mA	17mA	16mA
Product size (mm)	66*46*16	69*69*16	91*70*16	125*80*16	115*97*25	145*130*18
Working environment temperature	-10°C -60°C					
external power	No need for external power supply, relying on the internal energy transfer of the battery to achieve the whole group balance					

- **Connection:** The connection diagrams are all the highest strings drawn. You can connect as many strings as you actually need, and the rest can be left floating

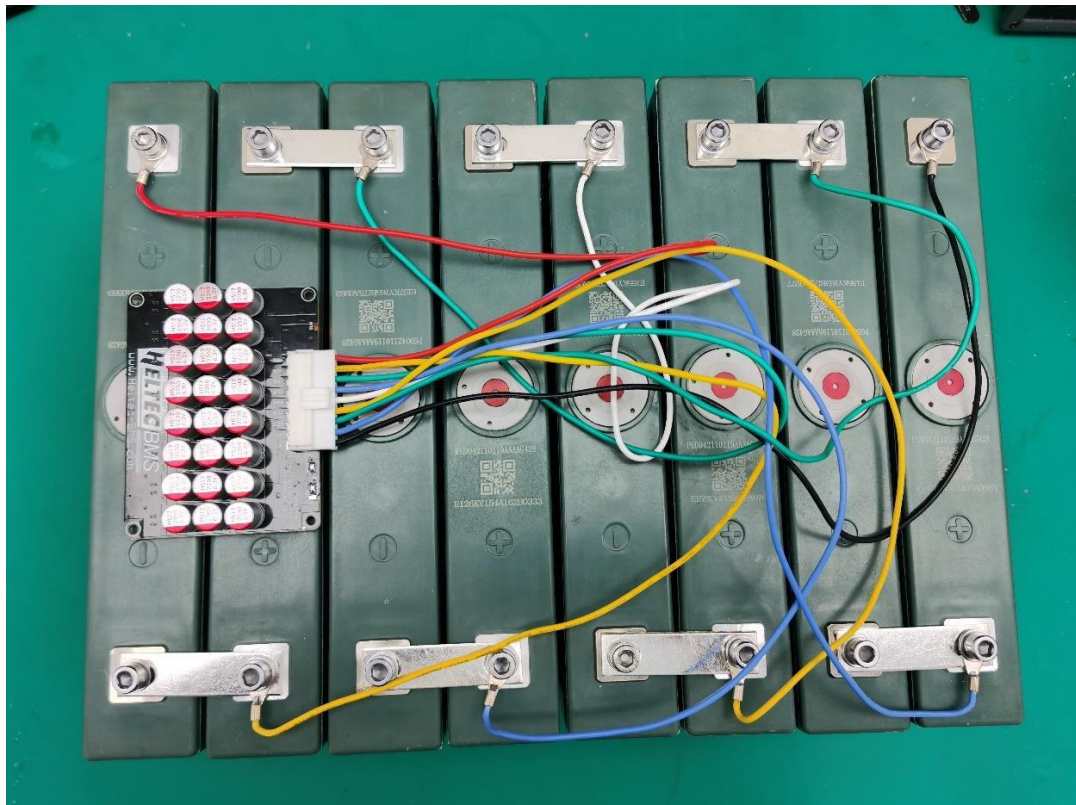
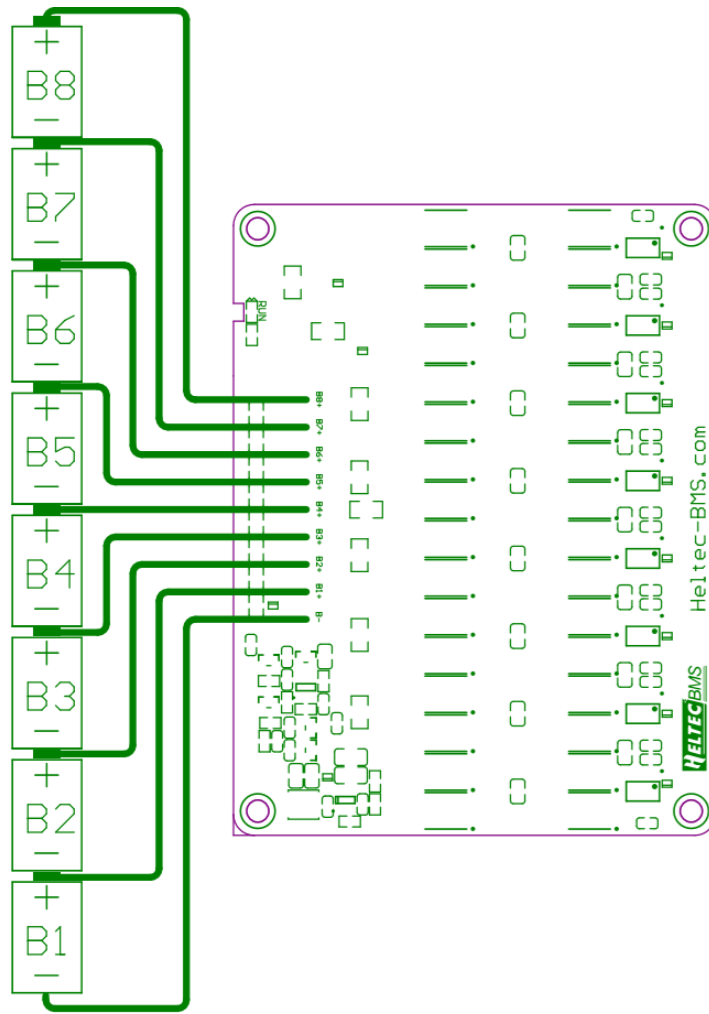
4S(3-4S)



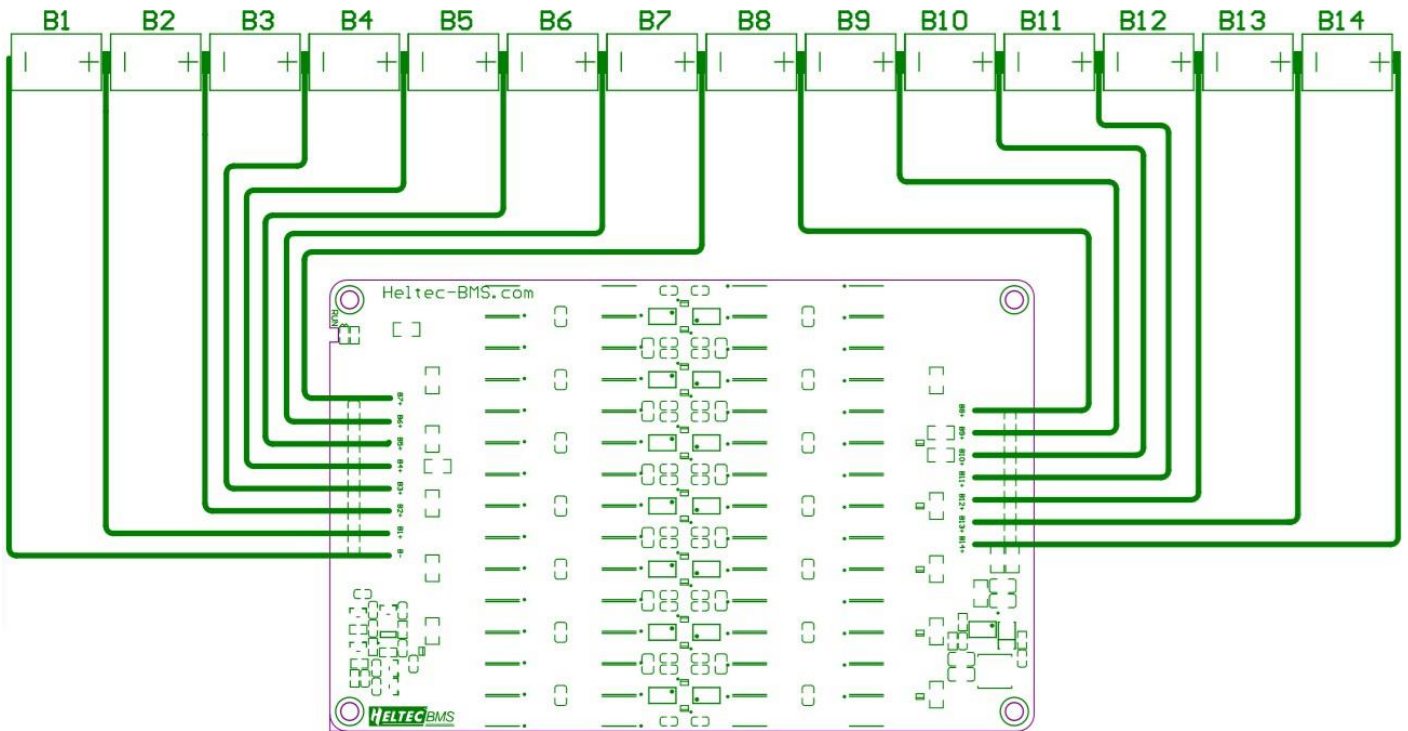
6S(4S-6S)



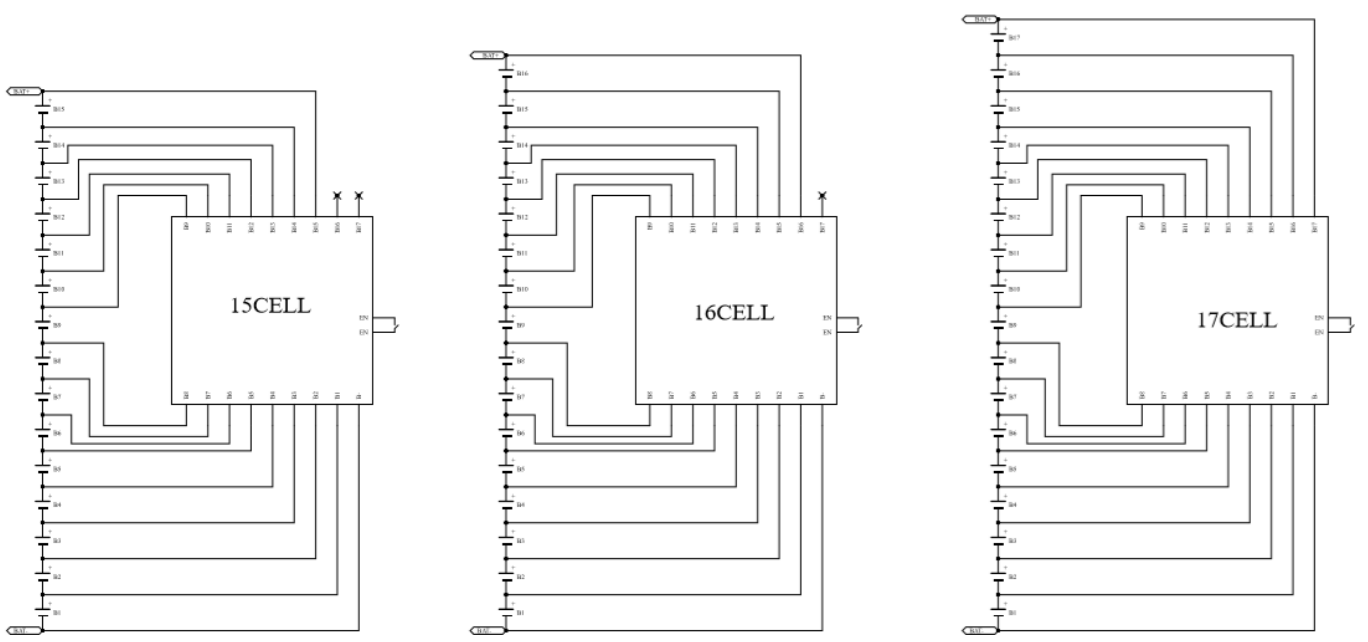
8S(6S-8S)



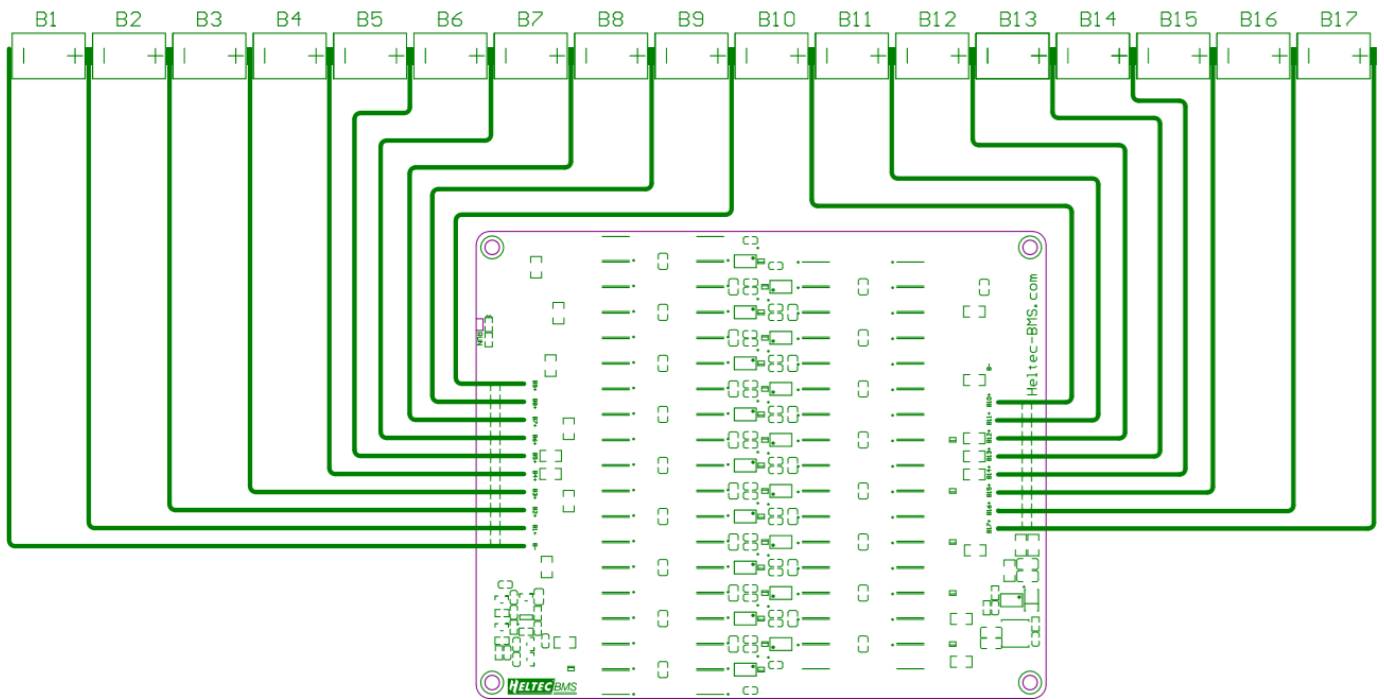
14S(9S-14S)



Old Version 15S-17S



New 17S (13-17S)



21S(17S-21S)

