

2023+ Pilot Roof Rack Installation guide.

This guide assumes you are removing the factory roof rails and replacing them with our rack. If you do not have factory rails installed, please refer to the “Honda Roof Rail Installation guide” on our site for prepping your Vehicle (Pgs. 5-9).

Tool:

- T45 Torx
- 10mm socket (M6 Hardware)
- 13mm wrench (M8 Hardware)
- 7/16” wrench (¼”-20)

Begin by removing the crossbars. Then the plastic side panels of the factory roof rails are the next to go. This allows you access to the T45 bolts that hold the rails to the mounting feet. Once these bolts have been removed lift the rails off the vehicle. Next, remove the factory mounting feet from the rain gutter. At this point check for excess sealant around the studs in the rain gutter. Remove excess sealant if necessary. This will ensure that the new brackets sit flush in the gutter.

- M8 hardware torque (16 ft-lbs)
- M6 hardware torque (10 ft-lbs)
- ¼”-20 hardware torque (12ft-lbs)
- T45 Nuts Torque (14 ft-lbs)

Start by building the rack on a bench. Assembling the front and rear load bars first.

Front Load Bar Assembly:

- 1x 80/20 cross member
- 2x Adjustable leg kits
- 2x Stiffeners
- 8x ¼"-20 carriage bolts
- 8x ¼"-20 lock nuts

Start by loading ¼"-20 carriage bolts, 4 in each channel (A) into the 80/20 cross member.

(A)



Assemble the adjustable leg kits as shown. x2 (B)

(B) Leg views





Using the provided M8 carriage bolts and nuts. Leaving them loose for final adjustment on the vehicle. Next using the ¼"-20 carriage bolts attach the two stiffeners to the end edge of the crossmember (C). Make these as square as possible to save you from any trouble later. **Tighten stiffener bolts down as they will be hard to reach beyond this step.** Next using two remaining ¼"-20 carriage bolts attach the adjustable leg kits to the crossbar leave loose (C). Once the adjustable leg kit is installed set the width of the legs to ~49" this will allow you to drop it onto the front mounting points. Use the T45 nuts install and Torque (14 ft-lbs).

(C) The stiffeners are installed toward the front of the vehicle.



Next, make the Rear load bar assembly.

Rear Load Bar Assembly:

- 1x 80/20 crossmember
- 2x Adjustable leg kits
- 4x ¼"-20 carriage bolts
- 4x ¼"-20 lock nuts

Start by loading ¼"-20 carriage bolts (2 in each channel) (A) into the 80/20 cross member.



Assemble the adjustable leg kits as shown (B). Using the provided M8 carriage bolts and nuts. Leaving them loose for final adjustment on the vehicle.

(B)



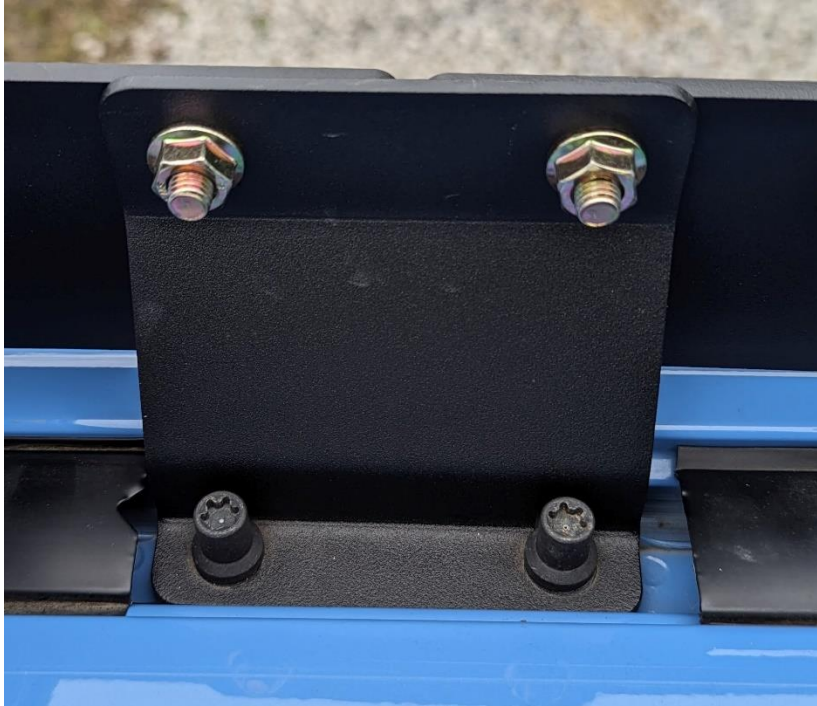
Next using the ¼"-20 carriage bolts attach the adjustable leg kits to the crossbar leave loose (C).



(C)

Once the adjustable leg kit is installed set the width of the legs to ~45.5" this will allow you to drop it onto the rear mounting point. Using the T45 nuts install and Torque (14 ft-lbs).

Next install the Main legs that attach to the studs at the middle of the roof on both sides. Reuse the factory T45 nuts. Torque to 14 ft-lbs. (Picture shown at completion)



Next assemble the side panels.

Driver Side Panel assembly:

- 1x Front Panel
- 1x Rear (Driver) Panel
- 1x Panel Link
- 4x M8 carriage bolts
- 4x M8 flange nuts
- 4x M6 Black stainless bolts

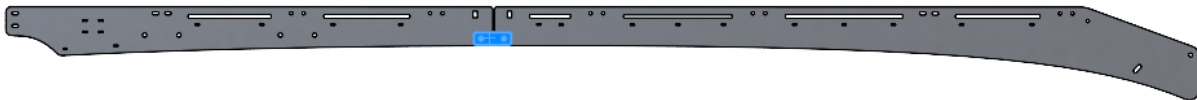
Start by laying the rear panel on a flat surface (logo side down) (A).



(A)

Place the front panel down next to the rear panel and connect with the panel link (highlighted in Blue) and provided M8 carriage bolts and nuts. Make sure you're placing the link on what will be the inside of the rack (B).

(B)



Make sure the front panel and rear panels line up and torque to (16 ft-lbs). **These are a bit tough to get to once the Side panel is installed.** Once torqued you should have what looks like a giant hockey stick. Next, on the vehicle, mount the driver's side panel to the main leg using M8 carriage bolts and nuts and attach the driver side panel to the front and rear load bars using the provided black stainless M6 hardware.

Passenger Side Panel assembly:

- 1x Front Panel
- 1x Rear (Pass) Panel
- 1x Panel Link
- 4x M8 carriage bolts
- 4x M8 flange nuts
- 4x M6 black stainless bolt

Start by laying the rear panel on a flat surface (logo side down) (A).

(A)



Place the front panel down next to the rear panel and connect with the panel link and provided M8 carriage bolts and nuts (2). Make sure you placing the link on what will be the inside of the rack (B).

(B)



Make sure the front panel and rear panels line up and torque to (16 ft-lbs). **These are a bit tough to get to once the Side panel is installed.** Once torqued you should have what looks like a giant hockey stick. Next, on the vehicle, mount the passenger side panel to the main leg using M8 carriage bolts and nuts. Mount the passenger side panel to the front and rear load bars using the black stainless M6 hardware.

Next up assemble the Front cross member.

- 1x 80/20 crossmember
- 3x Small rubber bumper
- 3x Large rubber bumper
- 4x ¼"-20 carriage bolts
- 4x ¼"-20 lock nuts
- 4x M6 black stainless bolts

Start by placing the rubber bumpers as shown Approximately 8" in from the ends and one in the center. Note: Different size bumpers provided, based on final assembly. They should be compressed between the crossmember and front fairing.

Next install ¼"-20 carriage bolts (2 in each channel). (A).

(A) Example



Install cross member at the front most crossmember space on the side rail. Placing the rubber bumpers forward with the ¼"-20 carriage bolts pointing downward. Line up the ¼"-20 bolts with the stiffener.

Use 4 black stainless M6 to secure the front crossmember to the side panel. Place lock nuts on the carriage bolt locking the first two crossmembers together with the stiffener.



Next install the edge protector on the front fairing.

- 1x Edge protector
- 4x M6 black stainless bolts

Place the fairing on the vehicle and align the fairing mounting holes with the side panels and attach with the (4) black stainless M6 black stainless hardware. Leave loose until you've tightened the adjustable legs. **NOTE: When tightening the Fairing press downward at the center. Pressing down at the edges of the fairing can result in fairing movement.**

At this point you should have both load bars installed and affixed to the vehicle. The main legs should be affixed to the vehicle. Side panels installed to the main legs and load bars. Stiffener nuts tight. This is a good time to check and make sure the rack is centered on the top of the vehicle as well as squared up and flat. Once you've checked over the rack finish tightening the M8 nuts on the adjustable legs. Then tighten the mounting ¼"-20 nuts between the legs on the two load bars. Next tighten the fairing into position (See note in fairing section). It is designed to contact the roof. Now that everything is tightened, the only thing left to do is to install the remaining 5 crossmembers using the provided black stainless M6 hardware. There are dedicated holes for each cross member located approximately 12" apart down the side panels. Placing a towel or blanket on top of the vehicle, then lay out the crossbars on top. Install one side leaving loose then install the other side and tighten to the side rail. Finally go back and tighten the first side.

