

REPORT OF MICROBIOLOGICAL ANALYSIS
THIS REPORT MEETS NELAC STANDARDS

Mr. Brian Rowe
 Ingenuity H₂O
 2591 Centerville Road, Ste 101
 Tallahassee, FL 32308

Report #: 25524
 Report Date: February 11, 2015
 NELAC#: E81350
 FDEPQA#: 920087G
 Project#: 215047

Table 1. Sample(s) received 02-05-15.

	Total Coliform	<i>E. coli</i>	Enterococcus
Units:	#colonies/100mL	#colonies/100mL	#colonies/100mL
Methodology:	SM 9222 B	EPA 1603	EPA 1600
Detection Limit:	1.0	2.0	2.0
Analysis Date:	02-05-15	02-05-15	02-05-15
Analysis Time:	13:00	13:00	13:00
Analyst:	AL	AL	AL
Sample Description:			
Blank through Bottle	1.0 U	2.0 U	2.0 U
Blank through Filter	1.0 U	2.0 U	2.0 U
Positive Controls through Bottle	1.0 U	2.0 U	2.0 U
Positive Controls through Filter	1.0 U	2.0 U	2.0 U
Raw Wastewater through Bottle	20	2.0 U	2.0 U
Raw Wastewater through Filter	10	2.0 U	2.0 U
Positive Control	1,700,000	1,300,000	8,300,000,000 Z
Raw Wastewater	32,000,000	570,000	800,000

Data Qualifiers that may apply:

U = The analyte was not detected and the indicated value is the detection limit.

Z = Too many colonies were present for accurate counting. The value provided is an estimate.

Procedure

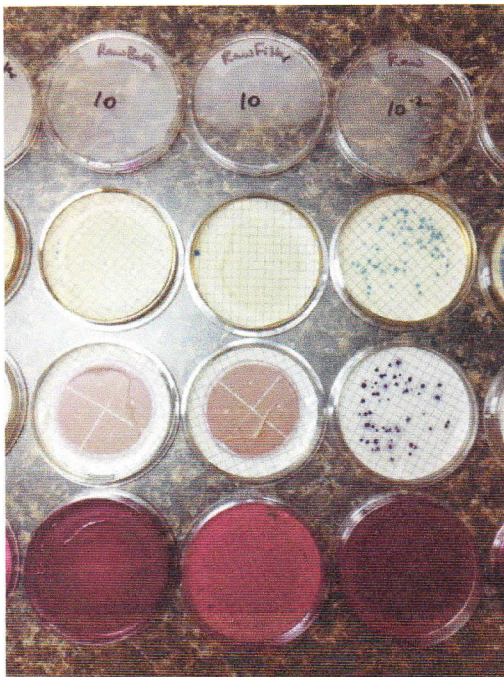
The antibacterial properties of both the filtered water bottle and the inline filter were examined using 3 solutions:

1. 100 mL of sterile water as a blank
2. 10 mL of a positive control solution prepared using stock cultures of *Escherichia coli* ATCC 25922 and *Enterococcus faecalis* ATCC 29212 incubated in Tryptic Soy Broth at 35°C for 4 hours
3. 10 mL of untreated wastewater (lab ID# 127740-1)

The solutions were tested for Total Coliform (using SM 9222 B), *E. coli* (using EPA 1603), and Enterococcus (using EPA 1600) both before and after treatment with each filter product.

Observations

The colony counts are reported as the number of colonies per 100 mL and are summarized on the previous page. The photographs below illustrate the growth observed.



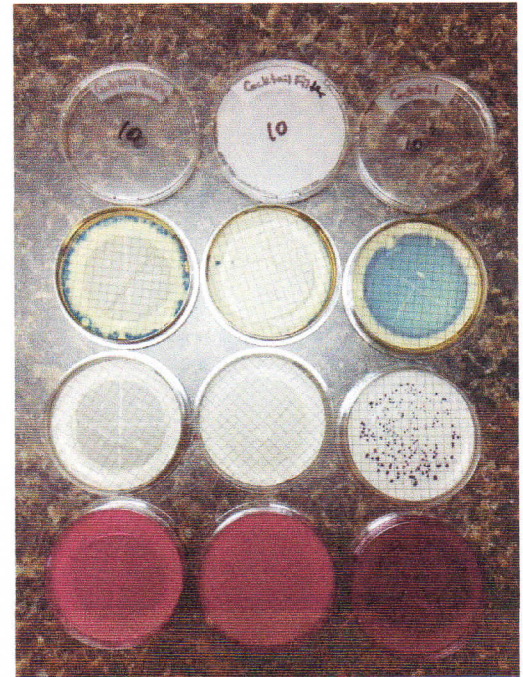
From top to bottom the selective media are for:

Enterococcus
E. coli
Total Coliform

From left to right the samples are:

10 mL Raw WW Bottle
10 mL Raw WW Filter
0.01 mL Raw WW

10 mL Positive Control Bottle
10 mL Positive Control Filter
0.01 mL Positive Control



Data Release Authorization:

Sample integrity and reliability certified by lab personnel prior to analysis. All quality assurance samples met quality control limits unless otherwise specified. The reported analytical results relate only to the sample submitted. This report shall not be reproduced, except in full, without the written approval of Ackurilabs. Please contact the undersigned at the above phone number with any questions regarding this report.

Amanda Lawhon 2-11-15
Amanda Lawhon, QA Officer

