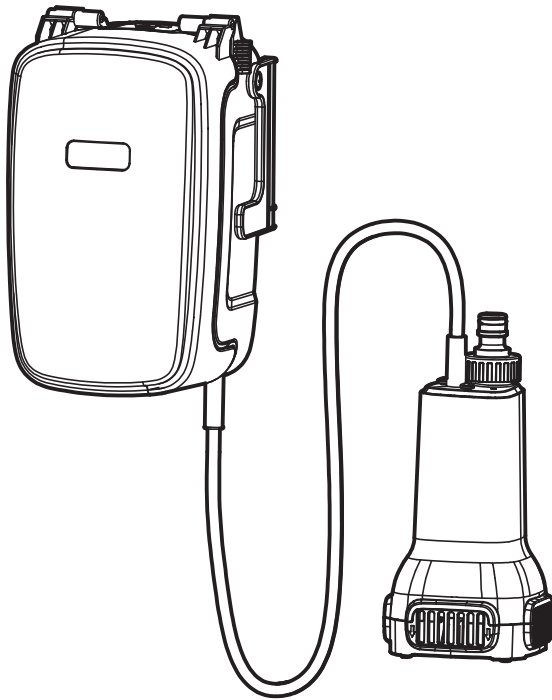


mellif[®]

YOUR ULTIMATE POWER TOOL PARTNER

SUBMERSIBLE PUMP USER MANUAL



MADE IN CHINA

Safety instructions

1. The electrical connection for the battery charger shall be with an earthed socket with supply voltage of 100-240VAC, 50Hz/60Hz.

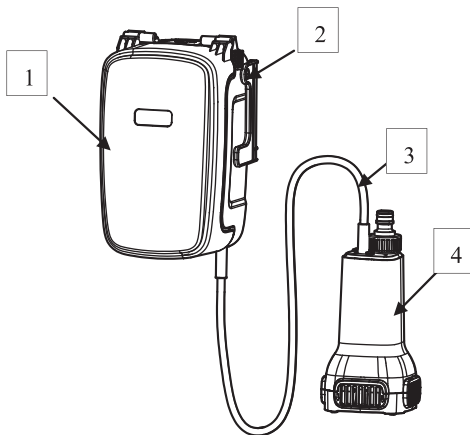


Caution!

2. The pump must not be used when people are in the water;
3. The battery pack must be charged indoors.
4. If the supply cord is damaged, it must be replaced by the manufacture or its service agent or a similarly qualified person in order to avoid a hazard.
5. Children should be under close supervision to prevent them from playing with the pump.
6. This appliance is not intended for use by persons (including children) with reduced physical, sensory or mental capabilities, or lack of experience and knowledge, unless they have been given supervision or instruction concerning use of the appliance by a person responsible for their safety.
7. Children should be supervised to ensure that they do not play with the appliance.
8. pollution of the liquid could occur due to leakage of lubricants.
9. Please contact your electrician!

1. Description

DCQ807



1. Battery compartment

2. Hook

3. Cable line

4. Pump

2. Consistency

Your submersible pump is designated for the circulation of water with maximum temperature of 35°C.

This pump may not be used for other fluids, especially motor fuels, cleaning fluids, and other chemical products!

Fasten the pump to a reliable object and Ensure that electrical parts are not immersed in water.

3. Installation

The submersible pump is installed as follows:

- Hang in a stationary position with hook or.
- Fixed to a stationary position with screws.

Please note! You should never install the pump by suspending it unsupported from its delivery pipe or power cable. Isolate the electrical parts of the pump from water. To guarantee that the pump works properly, the bottom of the shaft must be kept free of sludge and dirt of all kinds.

If the water sludge is too much, the filter in the base cover will be blocked and stop the pump from conveying water. It is necessary, therefore, to check the submersible pump regularly (by cleaning the filter).

4. Mains supply

Your new rain water pump is equipped with a battery pack. The pump is designed to be connected to a 20VDC. The battery charger is designed to be connected to a 100-240VAC, 50 Hz/60Hz.

Make sure that the battery pack is full of electricity. Plug the battery pack into the pump and the pump is ready to go.

Important note! If the mains cable suffers any damage from external action, repairs to the cable are prohibited.

5. Areas of use

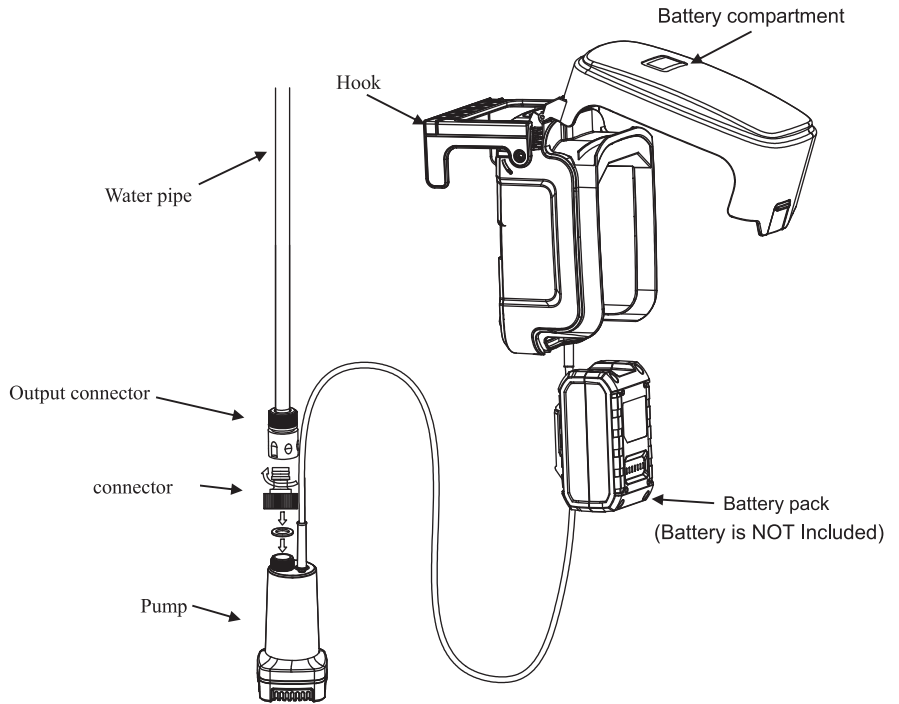
This pump is used primarily to conveying rain water. When installed in a flume, the pump conveying water in flume to irrigate flowers and trees.

They are also used wherever water has to be moved from rainwater collector to another, e.g. in the home, horticulture, plumbing and many other applications.

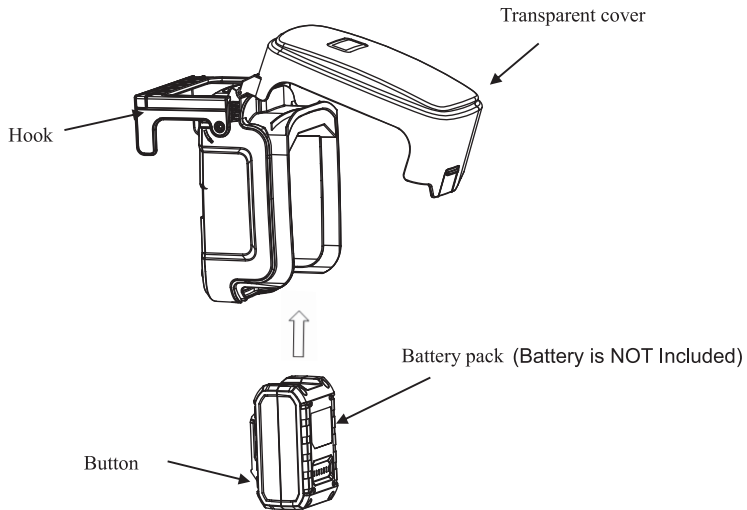
6. Setting to work

After having read these instructions carefully, you can set your pump to work, reconsidering the following item:

- Make sure the rainwater collector is secure and won't turn over.
- Check if battery is full of electricity.
- Check of cable has been attached properly.
- Make sure that water and humidity can never come to the electrical part.
- Put the sealing washer into the nut and tighten nut to the pump.
- Adjust the length of delivery pipe by move the hook after unscrewing the nut.
- Insert the battery pack to the hook.
- Fix the pump to the rainwater collector with your fixtures.
- Avoid pump running dry.
- Turn on the switch to start the pump.



- **Setting the pump control**
- Manual operation
- Turn on the switch to start the pump.
- Turn off the switch to stop the pump.
- The pilot lamp is use to display battery capacity.
- Press the button and pull out the battery pack when the pump is idle for a long time.



Please quote the following data when ordering replacement parts:

- Type of machine
- Article number of the machine
- Identification number of the machine
- Replacement part number of the part required

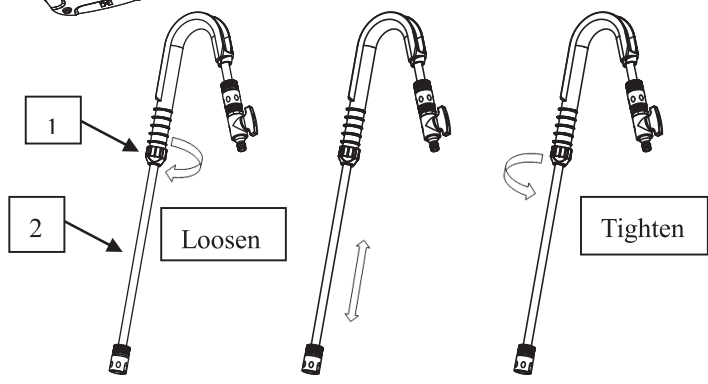
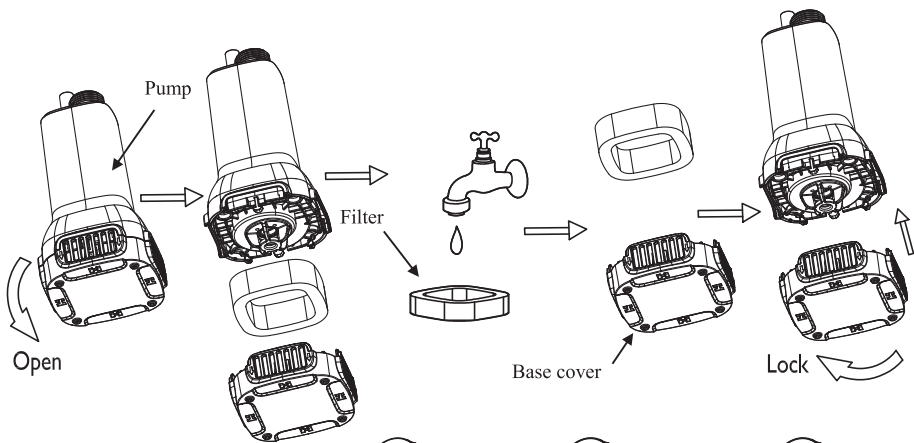
7. Maintenance guidelines

This pump is an approved, maintenance free high quality product, which is subject to severe final controls.

We recommend regular inspection and maintenance to ensure long equipment life and uninterrupted operation.

Important! Note!

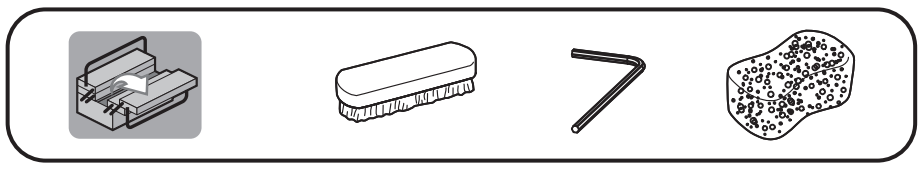
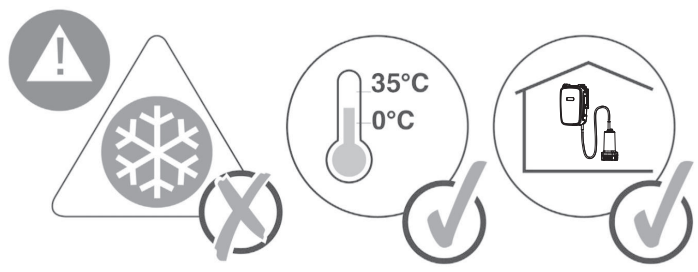
- Remove the battery pack before all maintenance work.
- In the event that the pump is often transported in the course of operation, it should be cleaned out with clear water after every use.
- In case of stationary installation, the function of the loading switch should be checked every 3 months.
- All fibrous particles which may have built-up inside the pump housing should be removed with a water jet.
- Every 3 months the bucket and rainwater collector should be cleaned from mud.
- Remove deposits on the filter with clear water. Open the base cover from the pump, then pull out the filter and clean. Put the clean filter into the base cover. Then press the base cover on the pump and rotary.



- 1、Knobs
- 2、water pipe

Water pipe length adjustment instructions:

- The first step to turn the knob loose
- The second step to lengthen or shorten the water pipe
- The third part of the tightening knob



8. Setting the pump control

Manual operation

- Turn on the switch to start the pump.
 - Turn off the switch to stop the pump.
 - The pilot lamp is used to display battery capacity.
 - Press the button and pull out the battery pack when the pump is idle for a long time.
 - Insert the battery pack to the pump before you start the pump.
-

Please quote the following data when ordering replacement parts:

- Type of machine
- Article number of the machine
- Identification number of the machine
- Replacement part number of the part required

9. Technical data

Model	MFSP001
Mains supply	20VDC
Power rating	80W
Delivery rate	Max. 1800 l/h
Pump height	Max. 17.5m
Immersion depth	Max.0.5 m
Water temperature	Max. 35° C
Moisture protection of electrical parts	IPX4
Moisture protection of pump	IPX8
Pump weight	1.55 kg

10. Incidents-Causes-Remedies

Incidents	Causes	Remedies
Pump does not start and the lamp is all off or just a light	- The battery pack is dead	- Battery charge
Pump does not start and the lamp is all on	-The switch is turn off -The pump life is over	-Turn on the switch - Change the pump
No flow or Insufficient flow	-The filter is clogged -The pump is not submerged	-Clean the filter -Let the pump submerged
The pump does not start and the first light flashes	The battery pack is dead	Battery charge
The pump does not start and the second light flashes	The pump is not submerged	Let the pump submerged
The pump does not start and the third light flashes	Battery pack voltage too high	Replace intact battery pack.

11. Disposal



This marking indicates that this product should not be disposed with other household wastes throughout the EU. To prevent possible harm to the environment or human health from uncontrolled waste disposal, recycle it responsibly to promote the sustainable reuse of material resources. To return your used device, please use the return and collection systems or contact the retailer where the product was purchased. They can take this product for environmental safe recycling.

