



# BADGY200



## THE AFFORDABLE CARD PRINTING SOLUTION

Evolis presents the Badgy200 solution, designed to help you print professional quality color badges with perfect ease.

A complete solution which is economical and easy to use, Badgy200 fulfills all your needs for graphic personalization and instant card production, as single cards or in small batches.

### A COMPLETE SOLUTION

- This turnkey solution consists of a plastic card printer, the Evolis Badge Studio®+ card personalization software, and a pack of consumables (color ribbon and blank plastic cards) for 100 prints.
- A free card template library is available at [www.badgy.com](http://www.badgy.com), where you can personalize the template of your choice, adding texts, photos, barcodes, and more.

### EASY TO USE

- With the Badgy200 solution, you print your cards in 3 easy steps in less than a minute. The card printer is installed and used like a standard office printer and the included software is very intuitive.
- The Badgy print ribbons are easy to install and automatically recognized.

### COMPACT

- Smaller than an A4 sheet of paper, the printer can fit easily into any workspace.
- Thanks to its light weight (just 1.7 kg) and its carrying bag (sold separately), the Badgy can easily be transported.



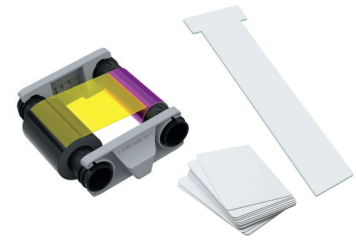
Online card template library



Evolis Badge Studio® card designer software



Badgy card printer



Color ribbon + PVC cards (53,98 x 85,60 mm) + 1 cleaning card

## MAIN FEATURES / Full technical specifications on [www.evolis.com](http://www.evolis.com)

### GENERAL FEATURES

- Direct-to-card dye-sublimation/Resin thermal transfer
- Single-sided printing, edge-to-edge
- Printing resolution: 260 x 300 dpi
- 2 million colors
- 16 MB RAM

### PRINTING PERFORMANCES

- Color (YMCKO): 38 s per card (95 cards/hour)
- Monochrome: 11 s per card (325 cards/hour)

### INTERFACES

- USB 2.0 (1.1 and 3.0 compatible), cable supplied

### CARD MANAGEMENT AND SPECIFICATIONS

- Feeder capacity: 25 cards (0.76 mm – 30 mil) to 40 cards (0.50 mm – 20 mil)
- Output hopper capacity: 25 cards (0.76 mm – 30 mil) to 40 cards (0.50 mm – 20 mil)
- Card thickness: 0.50 to 0.76 mm (20 to 30 mil), automatic gauge
- Card type: PVC cards
- Card format: ISO CR-80 – ISO 7810 (53.98 x 85.60 mm)

### DISPLAY

- LEDs
- Graphic printer notifications<sup>1</sup>: cleaning alerts, end of ribbon alert, ribbon due to end, etc.

### SAFETY

- Space for Kensington® security lock

### BADGY RIBBONS

To maximize the quality and durability of the printed cards, the lifespan of the print head, and the overall printer reliability, use the Badgy ribbons.

- Ribbon capacity:
  - YMCKO (included): 100 prints/roll
  - Black monochrome ribbon: 500 prints/roll
- Automatic detection and configuration
- Ribbon in a cartridge for easier handling
- Integrated ribbon saving for monochrome printing

### SOFTWARE

- Supplied with Evolis Badge Studio® + for designing and printing badges:
  - Import data from a database
  - Windows® 7 and higher and Mac OS® X from 10.12 and higher
- Supplied with Badgy Premium Suite® for Windows®:
  - Driver
  - Printer management and configuration tool with graphic notifications<sup>1</sup>
  - 24/7 online support
  - Compatible with Windows® 7 and higher
- Supplied with the Mac OS® X driver (10.12 and higher)

### PACKAGING CONTENT

- Printer
- Consumables:
  - Color ribbon (YMCKO): 100 prints
  - 100 blank PVC cards (0.76 mm - 30 mil)
  - 1 cleaning card
- Installation USB key (print driver, Evolis Badge Studio® + software, and card templates)
- USB cable
- Power supply unit and cable

### ECO-FRIENDLY DESIGN, CERTIFICATIONS AND STATEMENT OF COMPLIANCE

- Prolonged standby mode and reduced electricity consumption
- CE, FCC, ICES, VCCI, CCC, KC, BIS
- RoHS

### SIZE AND WEIGHT

- Complete packaged solution:
  - Dimensions (H x W x D): 315 x 385 x 285 mm (12.40" x 15.15" x 11.22")
  - Weight: 3.95 kg (8.71 lbs)
- Printer:
  - Dimensions (H x W x D): 148 x 200 x 276 mm (5.83" x 7.87" x 10.87")
  - Weight: 1.665 kg (3.67 lbs)

### WARRANTY

- 2-years warranty (printer and print head)<sup>2</sup>
- Warranty extensions available as an option

<sup>1</sup> Depends on the Windows® version

<sup>2</sup> The costs of return remain the responsibility of customer



### EUROPE - MIDDLE-EAST - AFRICA

Evolis - 14 avenue de la Fontaine - ZI Angers-Beaucouzé - 49070 Beaucouzé - France  
T +33 (0) 241 367 606 - F +33 (0) 241 367 612 - [info@evolis.com](mailto:info@evolis.com)

**US & CANADA** - Boston - [evolisnortham@evolis.com](mailto:evolisnortham@evolis.com)

**LATIN AMERICA** - Miami - [evolislatam@evolis.com](mailto:evolislatam@evolis.com)

**ASIA-PACIFIC** - Singapore - [evolisia@evolis.com](mailto:evolisia@evolis.com)

**CHINA** - Shanghai - [evolischina@evolis.com](mailto:evolischina@evolis.com)

**INDIA** - Mumbai - [evolisindia@evolis.com](mailto:evolisindia@evolis.com)

[www.evolis.com](http://www.evolis.com)

©2020 Evolis. All rights reserved. Actual product(s) may differ from information stated in this document. All specifications or pictures are subject to change without prior notice. All trademarks mentioned herein belong to their respective owners. Pictures: François Charron. 05/2020. KB-BDG2-113-ENG-A4 Rev B2. MK000496