

# LED Table Lamp

**TL46615**  
INSTALLATION SHEET

## START FROM HERE

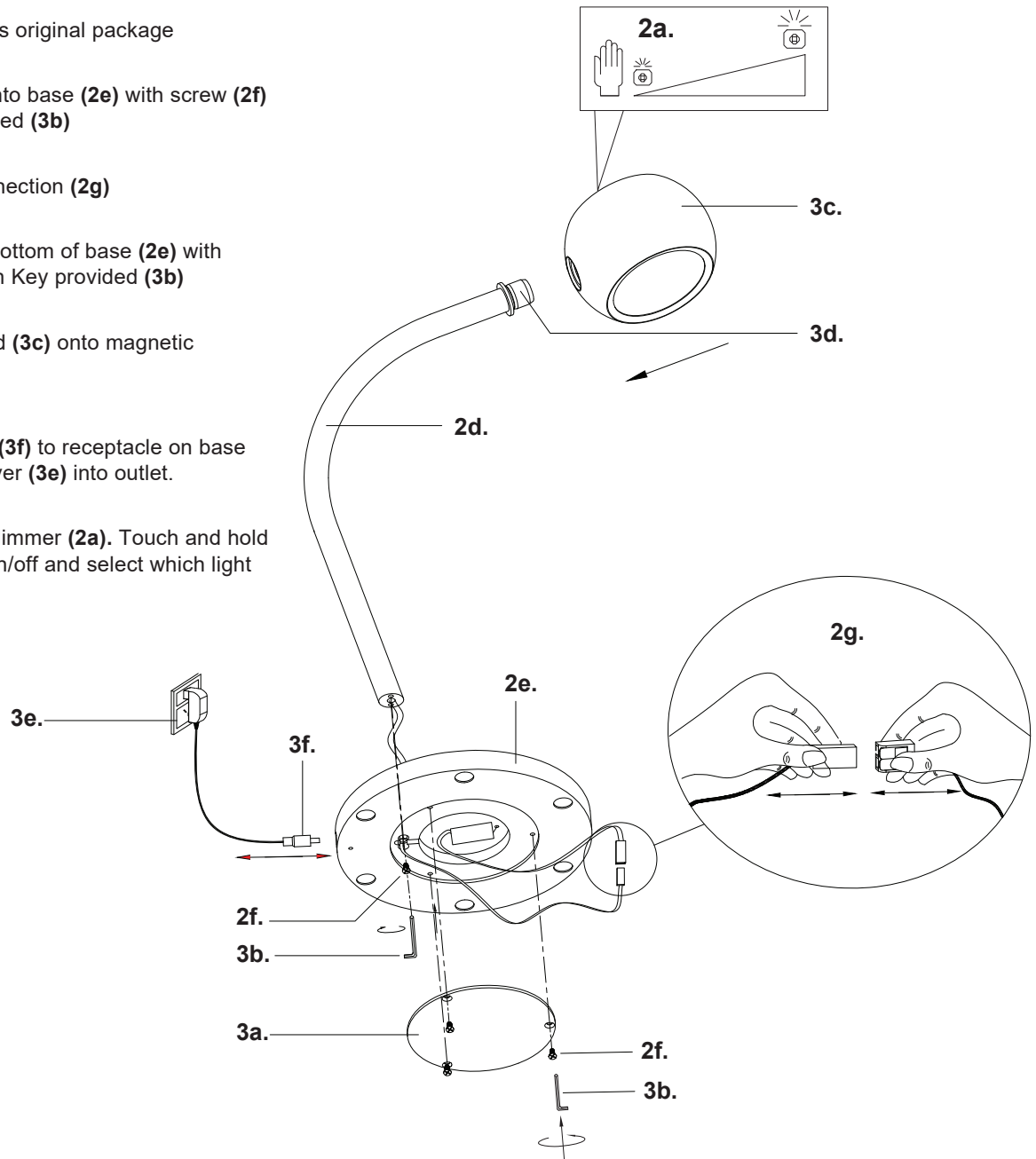
- Prepare everything in a clear area
- Wear gloves at all times during this installation
- Read instructions carefully before you start assembly
- Keep this installation sheet for future reference

### Please Note:

- This Kuzco LED fixture comes with pre-wired LED module(s)
- Unless instructed, Do Not touch any part of the LED module(s) as any unnecessary contact with the module could cause permanent damage
- Touch Dimmer

Technical Support: 1-855-855-8926

- 1.** Remove fixture from its original package
- 2.** Lock fixture rod (**2d**) into base (**2e**) with screw (**2f**) using Allen Key provided (**3b**)
- 3.** Make low voltage connection (**2g**)
- 4.** Secure cover (**3a**) to bottom of base (**2e**) with screws (**2f**) using Allen Key provided (**3b**)
- 5.** Gently slide lamp head (**3c**) onto magnetic connector (**3d**)
- 6.** Connect Coaxial plug (**3f**) to receptacle on base (**2e**) and then plug driver (**3e**) into outlet.
- 7.** Use hand to activate dimmer (**2a**). Touch and hold to dim, touch to turn on/off and select which light comes on.



KUZCO

19054 28th Avenue Surrey, BC Canada V3Z 6M3  
T: 604 538 7162 TF: 1-855 85 KUZCO F: 604 538 7196  
W: kuzcolighting.com  
20191230