

Model M SSK Kit Build Guide



Model M SSK 套件組裝說明

Before proceeding with the assembly, please take note of the following reminders and precautions:

1. When installing the switches, please be careful and gentle, especially with the five-pin switches, to avoid damaging the hot-swap sockets during the process.
2. The stabilizers shown in the following picture belong to us. The kit does not include the stabilizers when shipped, so please prepare it on your own.

在進行組裝之前，請仔細閱讀以下的提醒與注意事項

1. 在安裝軸體時，請小心輕柔，尤其是五腳軸體，以避免在過程中損壞熱插拔軸座。
2. 圖片中所示的衛星軸屬我們自己準備的。

套件在運送時不包含衛星軸，請自行備妥。

Step 1

Use the hex key to unscrew the case (M2 black screw * 8). 使用六角扳手來拆卸外殼

(M2 黑色螺絲 * 8)



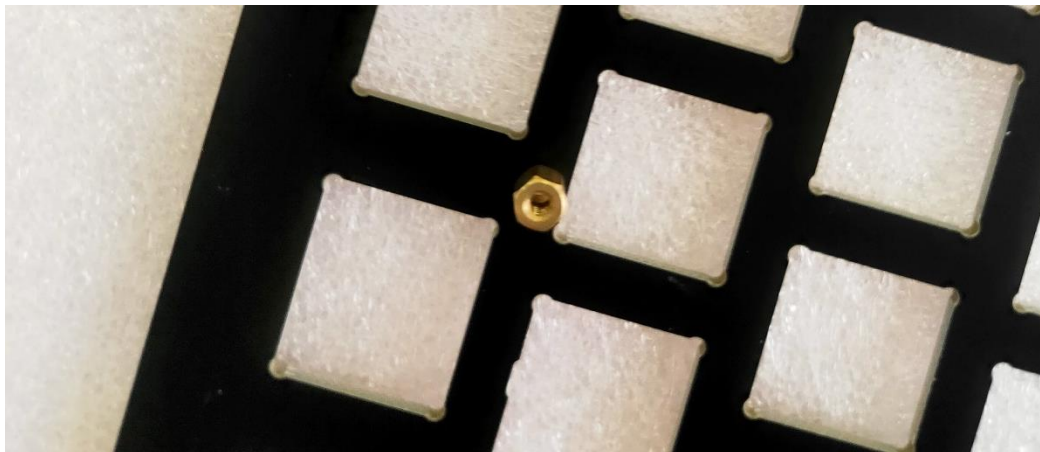
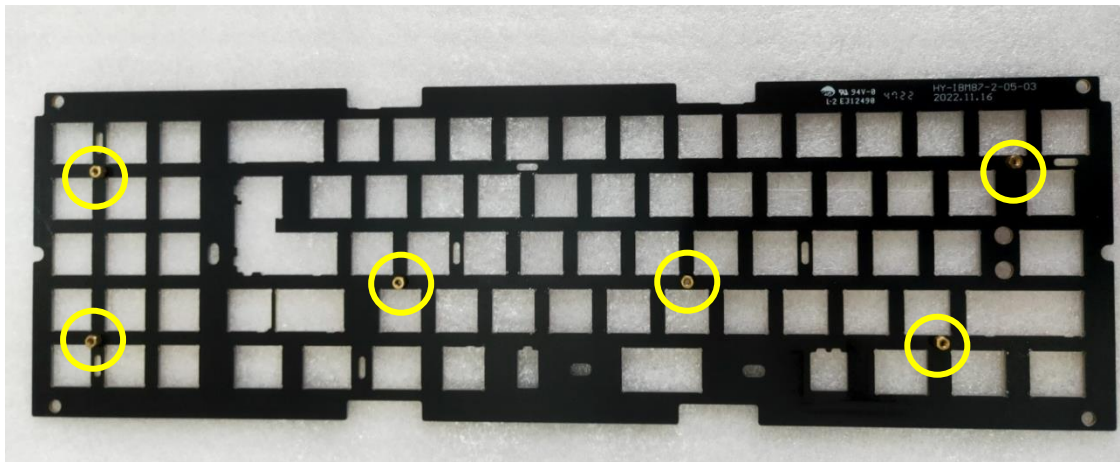
Step 2

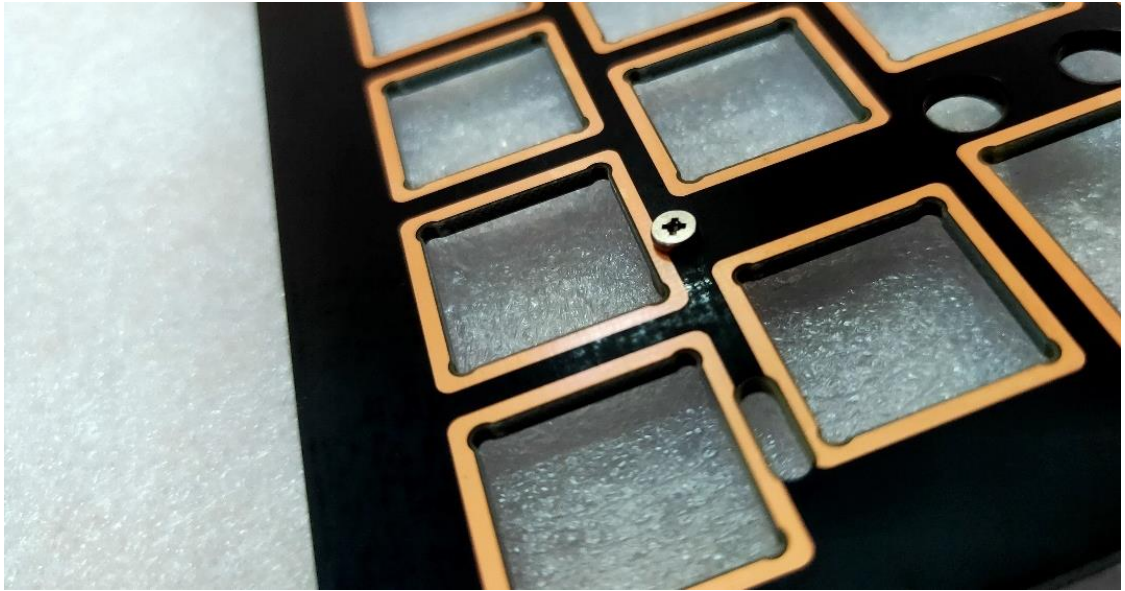
After disassembling the top and bottom case, secure the daughterboard at the marked locations in the picture below, and attach the gaskets according to preference. 拆卸上蓋和下蓋後，將子板固定在下圖中標記的位置，並可根據個人喜好貼上墊片。



Step 3

Place the brass standoffs at the marked locations in the picture below and secure them in position by screwing in six pieces of brass standoffs from the front of the mounting plate. Utilize the included flat-head screws found in the zip bag for this process. 將銅柱放置在下方圖片中標記的位置，並使用夾鏈袋中附帶的平頭螺絲從定位板的正面將六個黃銅支架固定在位。

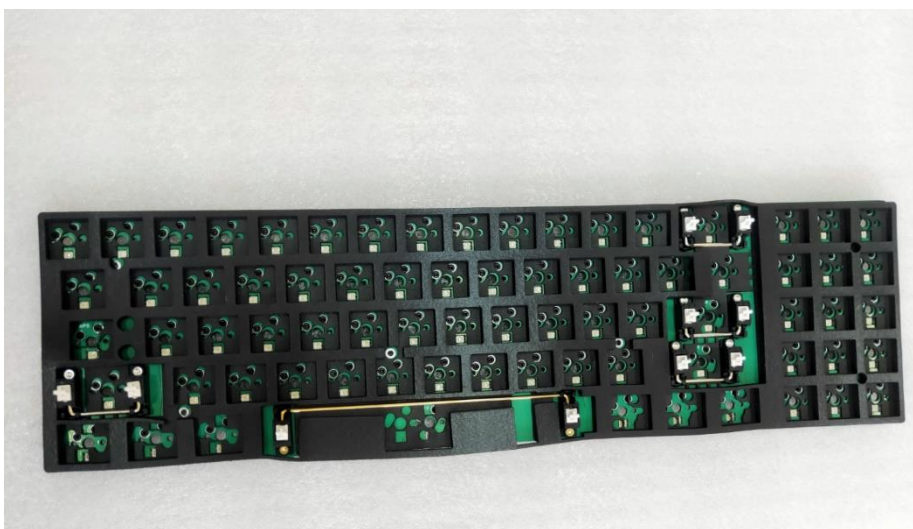
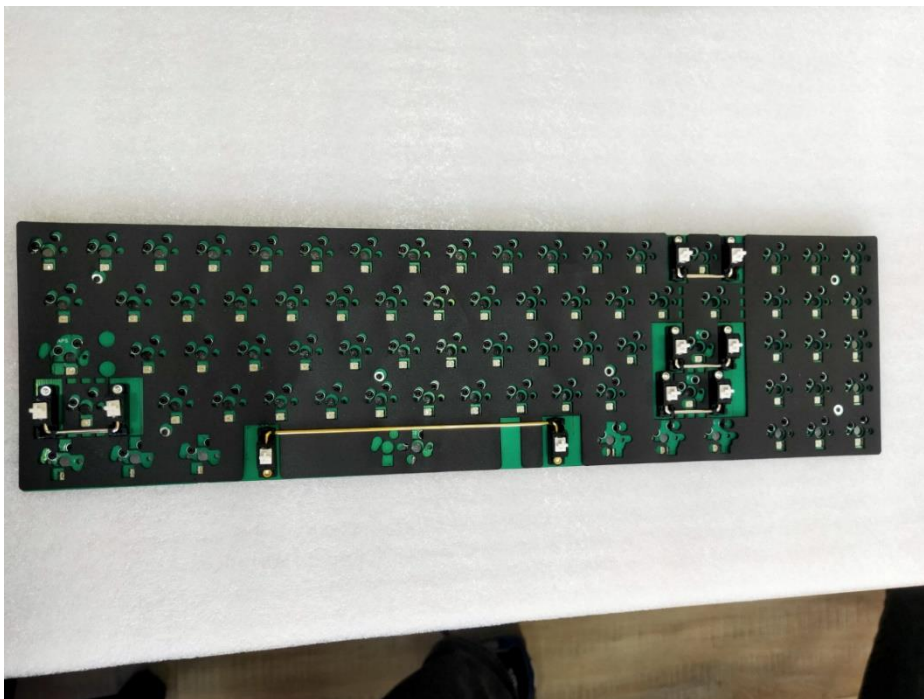




Step 4

Place the poron switch pad and poron plate foam sequentially onto the PCBA, with the Poron switch pad positioned first, followed by the Poron plate foam.

將 Poron 軸下墊 (poron switch pad) 和 Poron 夾層泡棉 (poron plate foam) 依序放在 PCBA 上,首先放置 Poron 軸下墊 ,再來是 PoronPoron 夾層泡棉。



Step 5

Place the mounting plate (FR-4/brass/aluminum) on top of the Poron plate foam.

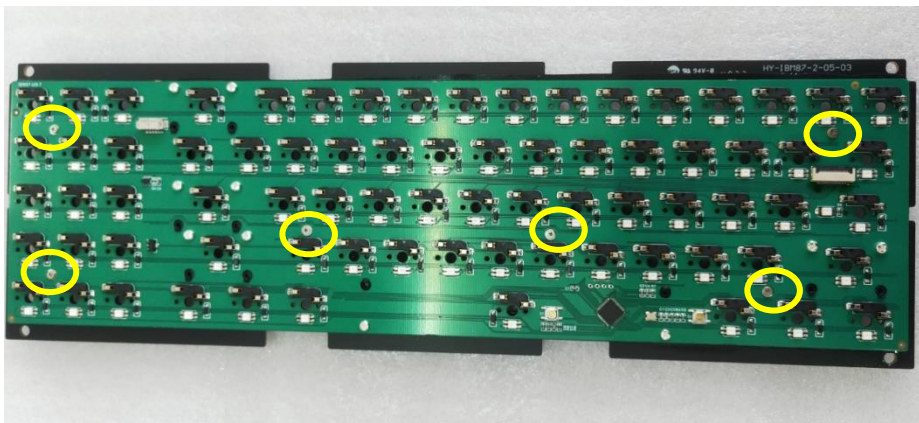
將定位板(FR-4/黃銅/鋁)放置在 Poron 夾層泡綿上。

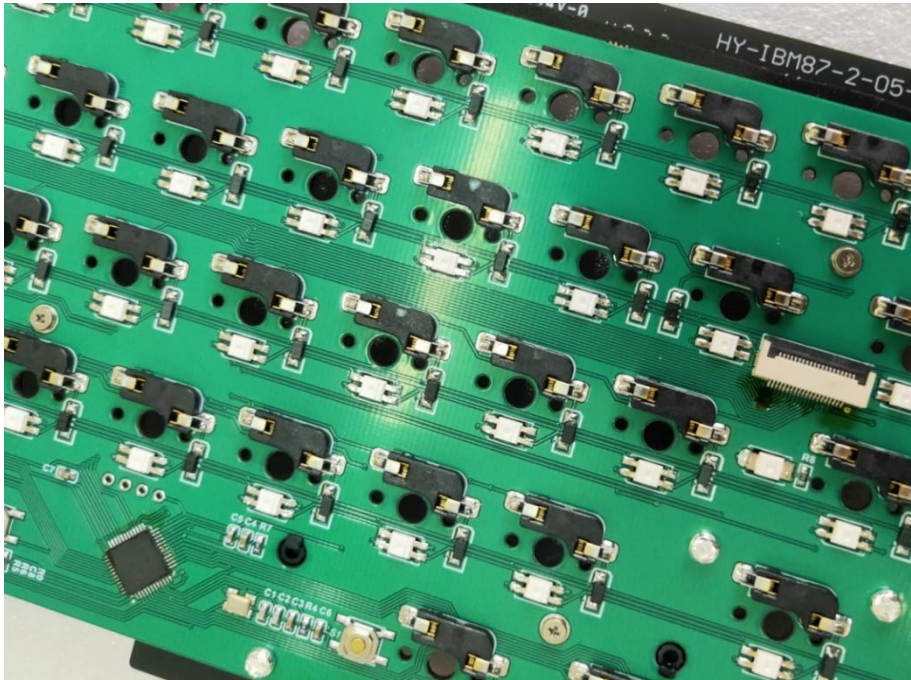


Step 6

After positioning the mounting plate, flip it over to the backside of the PCB, and secure the previously installed brass standoffs by fastening them with screw.在放置

好定位板後，請翻轉至 PCB 的背面，然後使用螺絲將之前安裝的銅柱穿過 PCB 並固定。





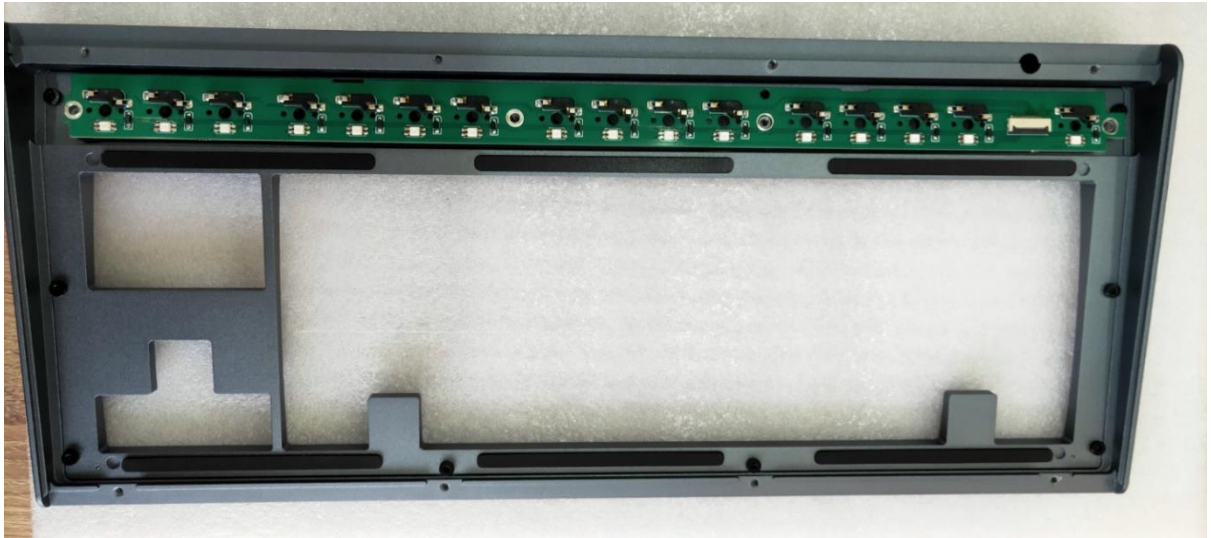
Step 7

Flip the top case of the kit to the back and position the Poron plate foam, followed by the Poron switch pad along the F-row. Finally, place the PCB on top. Then

screen the M2 black screw*4 pcs.將套件的上蓋翻轉至背面，接著在 F-row 那一排放置

Poron 夾層泡綿和 Poron 軸下墊，最後再放上 PCB。接著再鎖上 4 顆 M2 黑色螺絲將其固定





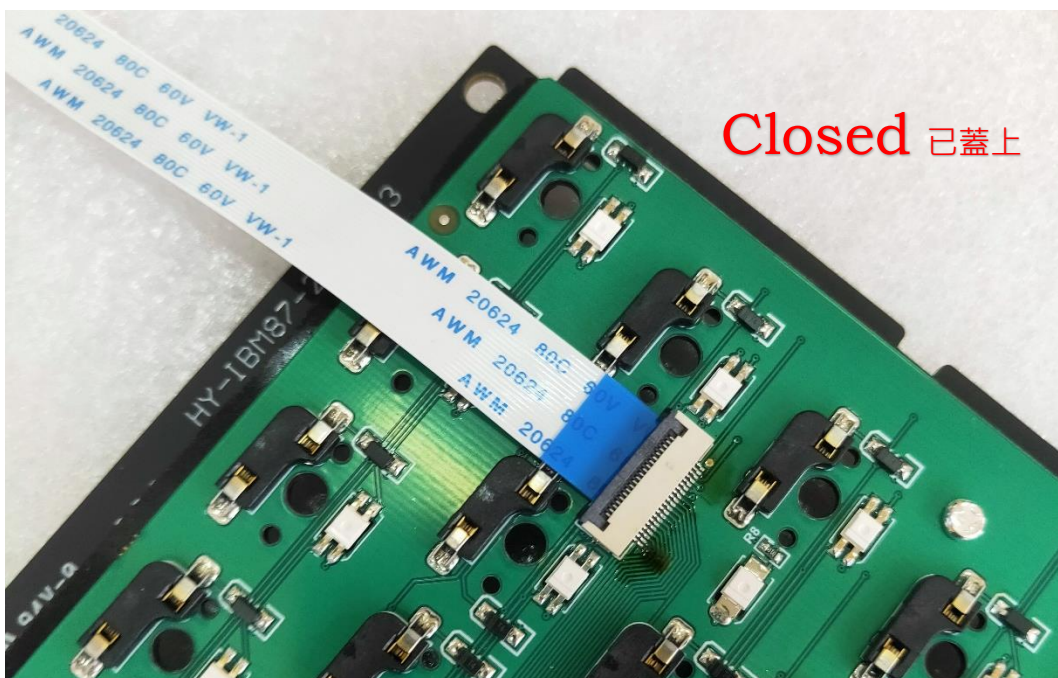
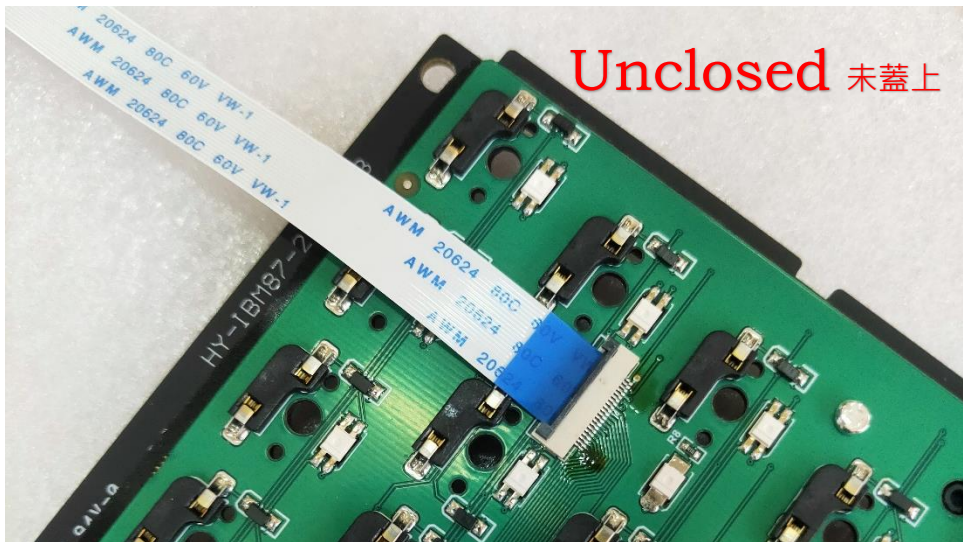
Step 8

Turn the main PCB over and insert the FFC (Flexible flat cable) into the connector.

*Please make sure to insert the FFC at the very bottom (blue side facing up, with the metal side facing down) Close the cover once it is inserted.

將主 PCB 翻至背面,並將 FFC(軟排線)插入製連接口。請務必確保將 FFC 插入至最底(藍色面

朝上,金屬面朝下。最後再蓋上卡扣。



Step 9

Place the poron bottom foam on the top of the bottom case.將 Poron 底層泡棉放置在底殼上。



Step 10

Connect the main PCB with the daughterboard and attach the ffc to the F-row.
Place the top case and secure it with M2 black screw* 8 pcs to complete the assembly. 最後，將主 PCB 與子板連接，並將排線接上 F 排。蓋上上蓋並用 8 顆 M2 黑色螺絲固定，組裝完成。

