



It's been a long time coming –
your favourite *lightweight*
warm-ups and Toastie Boots II
are back in new colours.



Toastie Boots II

- Made with lightweight and water-resistant materials.
- Designed to be more comfortable for your feet.
- Folds compactly to take up less space in your bag.
- Adjustable snap closure with elastic strap for comfort

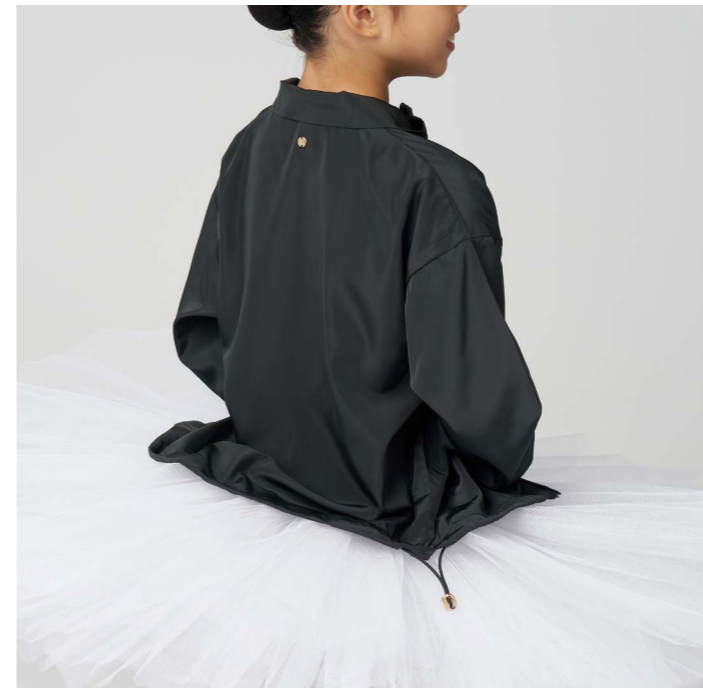
Colours: Black, Lavender

Size	Length*	Shoe Size Estimate
XS	21.5 cm	EUR 30 - 33
S	23 cm	EUR 34 - 36
M	24.5 cm	EUR 37 - 38
L	26 cm	EUR 39 - 40
XL	27 cm	EUR 41 - 43

*The length is based on the outer dimensions of the shoes you are wearing. It may feel tight depending on the shape of your feet.



new: warmup jacket

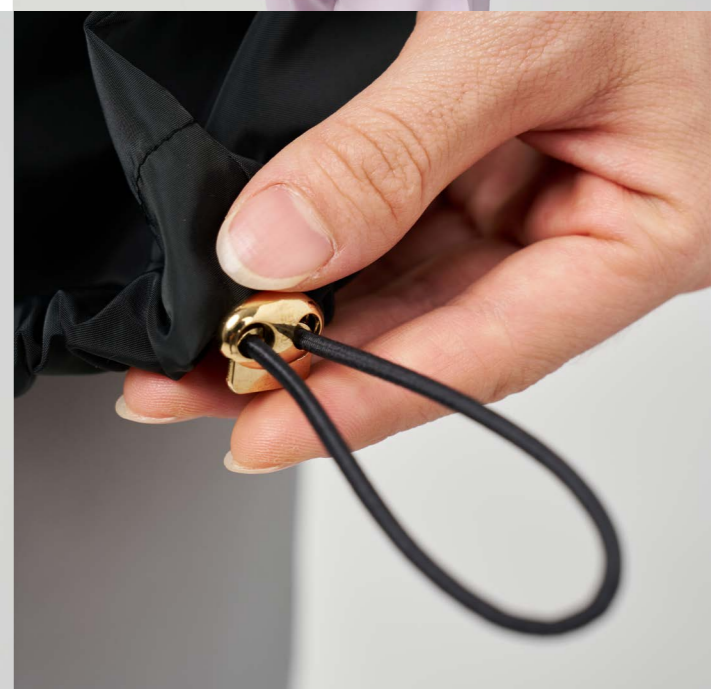


tutu friendly
2-way zipper

Opens up to sit flat on a tutu.

flexible elastic
drawstring for
2 looks

Wear it straight, or pull the elastic
drawstring tighter for a cropped look.





bluebell



WARM-UP JACKET
SWP40
CH SIZE 2
AD SIZE S, M

RIPSTOP SHORTS
SWP30
CH SIZE 1, 2
AD SIZE XS, S, M, L



RIPSTOP PRACTICAL SHORTS
SWP35
AD SIZE XS, S, M, L

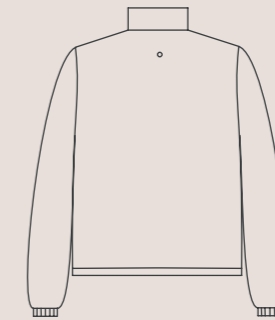
RIPSTOP SWEAT PANTS
SWP32
CH SIZE 1, 2
AD SIZE XS, S, M, L, XL



RIPSTOP JUMPSUIT
SWP33
CH SIZE 1, 2
AD SIZE XS, S, M, L



meringue



WARM-UP JACKET
SWP40
CH SIZE 2
AD SIZE S, M

RIPSTOP SHORTS
SWP30
CH SIZE 1, 2
AD SIZE XS, S, M, L



RIPSTOP PRACTICAL SHORTS
SWP35
AD SIZE XS, S, M, L

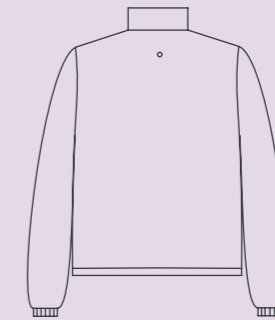
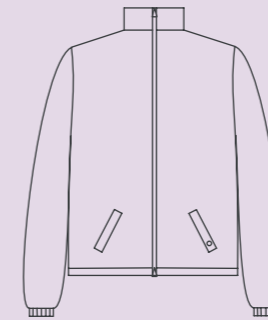
RIPSTOP SWEAT PANTS
SWP32
CH SIZE 1, 2
AD SIZE XS, S, M, L, XL



RIPSTOP JUMPSUIT
SWP33
CH SIZE 1, 2
AD SIZE XS, S, M, L



whimsical



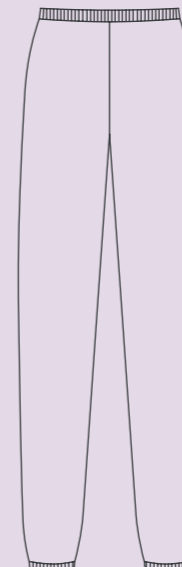
WARM-UP JACKET
SWP40
CH SIZE 2
AD SIZE S, M

RIPSTOP SHORTS
SWP30
CH SIZE 1, 2
AD SIZE XS, S, M, L



RIPSTOP PRACTICAL SHORTS
SWP35
AD SIZE XS, S, M, L

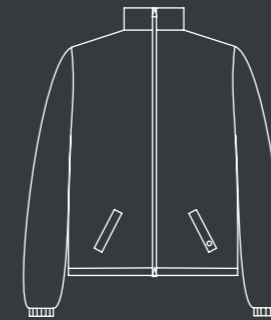
RIPSTOP SWEAT PANTS
SWP32
CH SIZE 1, 2
AD SIZE XS, S, M, L, XL



RIPSTOP JUMPSUIT
SWP33
CH SIZE 1, 2
AD SIZE XS, S, M, L



shadow



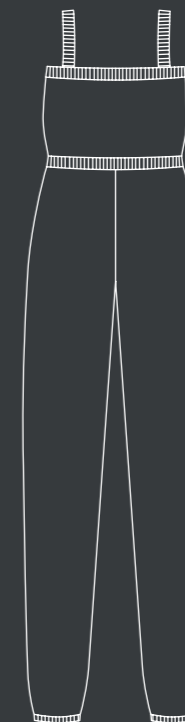
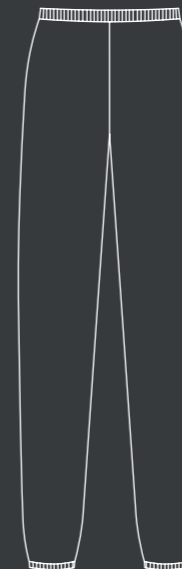
WARM-UP JACKET
SWP40
CH SIZE 2
AD SIZE S, M

RIPSTOP SHORTS
SWP30
CH SIZE 1, 2
AD SIZE XS, S, M, L



RIPSTOP PRACTICAL SHORTS
SWP35
AD SIZE XS, S, M, L

RIPSTOP SWEAT PANTS
SWP32
CH SIZE 1, 2
AD SIZE XS, S, M, L, XL



RIPSTOP JUMPSUIT
SWP33
CH SIZE 1, 2
AD SIZE XS, S, M, L



Photography eustudios
Dancer Soumya Wong
Singapore Ballet Artists Tamana Watanabe, Theresa Tan



www.sonatadancewear.com
ig: @sonatadancewear
fb: @sonatadancewearworld
contact: orders@sonata.com.sg

© Copyright 2024 Sonata Dancewear. All products and price information are correct as of print, and may be subject to change. Colours may vary due to screen or monitor's display settings. All products are subjected to availability. All Rights Reserved. Published April 2024.