

After Hours

FW23 COLLECTION



sonata®
DANCEWEAR

A woman with dark hair in a ponytail, wearing a pink velvet halter-neck top and dark pants, stands in profile looking out a window at night. The background shows a cityscape with blurred lights and a balcony railing. The lighting is soft and warm, highlighting the texture of her top.

After Hours

A versatile ensemble designed to effortlessly transition you from your busy workday to the moments that follow.

Whether you're heading to a dance class, gathering with friends for dinner, or any other evening adventure, "After Hours" empowers you step into the evening with grace and style.

Let your style shine as brightly as the night itself.



Design Points:

Bra Shelf Panel*

This added feature gives you the option of inserting paddings, to ensure that you feel confident and secure as you transition from the office to your dance class or any other evening activity.

Italian Fabrics

We've raised the bar by using the finest Italian stretch velvet and nylon spandex. They not only enhances the luxury of each piece but also guarantees a perfect fit, enabling you to move gracefully through your evening pursuits.

Perfect Pairing

Complete the ensemble by combining these pieces with our Daily Modal Joggers. This design element reflects our dedication to offering a wardrobe that seamlessly adjusts to your everyday needs and preferences.

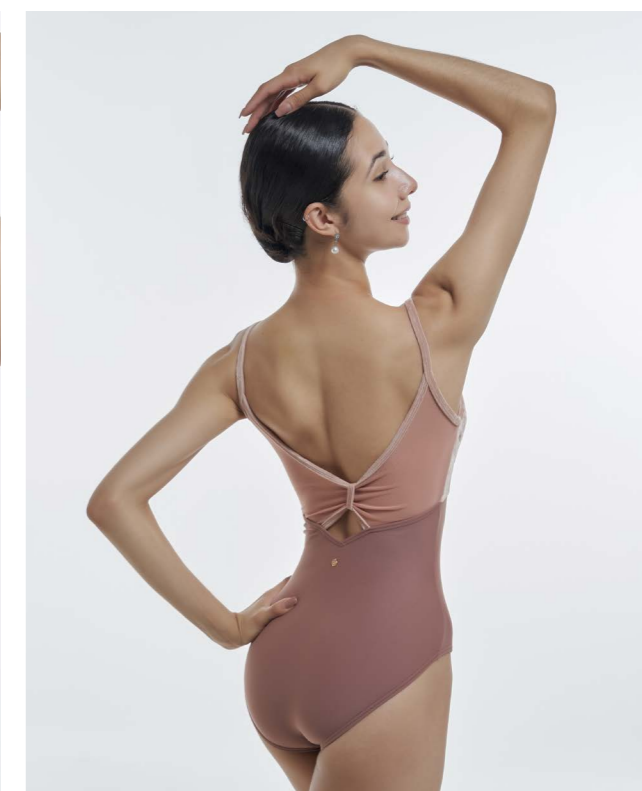
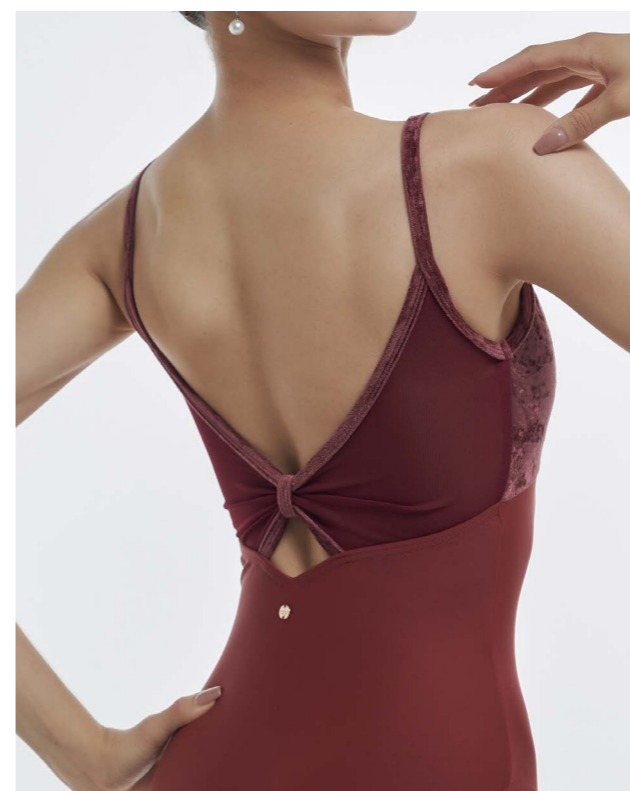
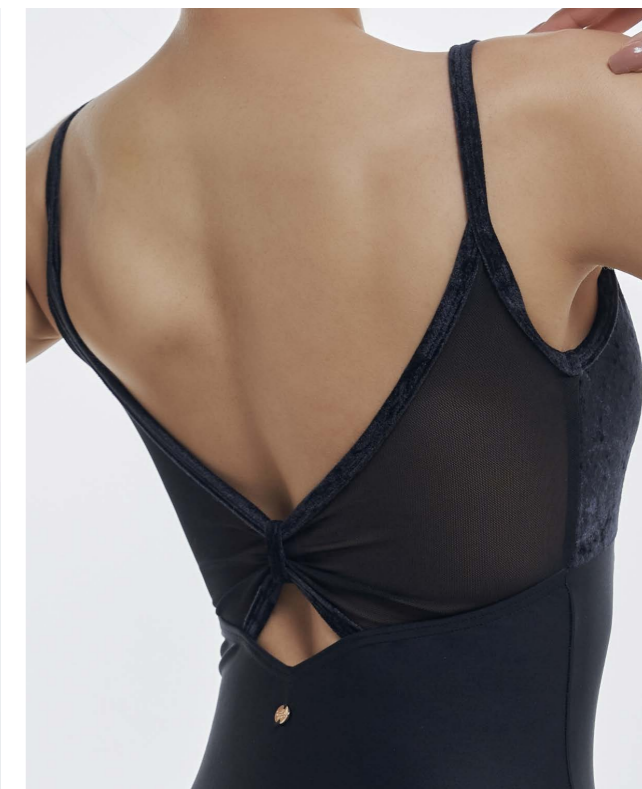
*Adult size XS-L only. Children size 1-2 comes with lining.



Daisy Leotard

Drawing inspiration from our past collection, this enchanting leotard is back in velvet and a built-in bra shelf panel.

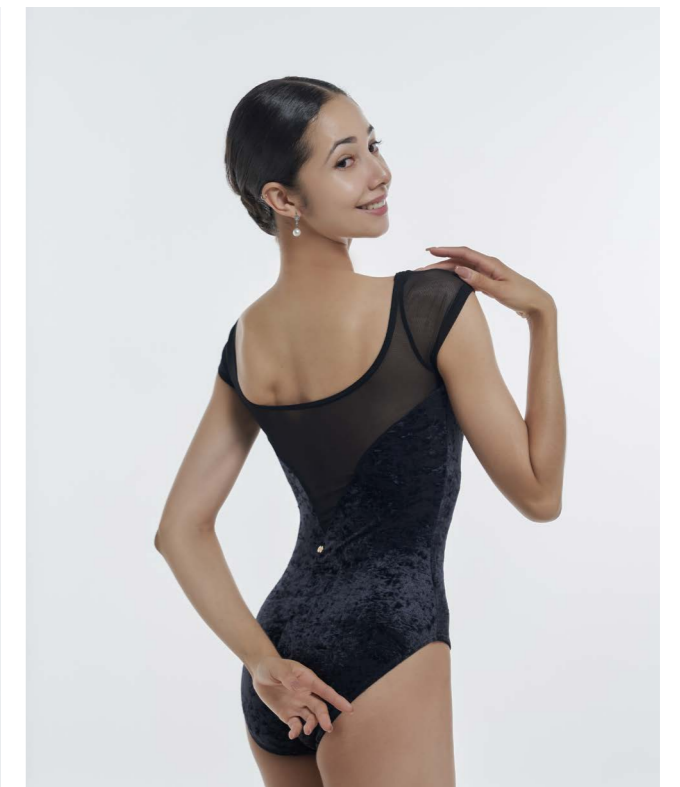
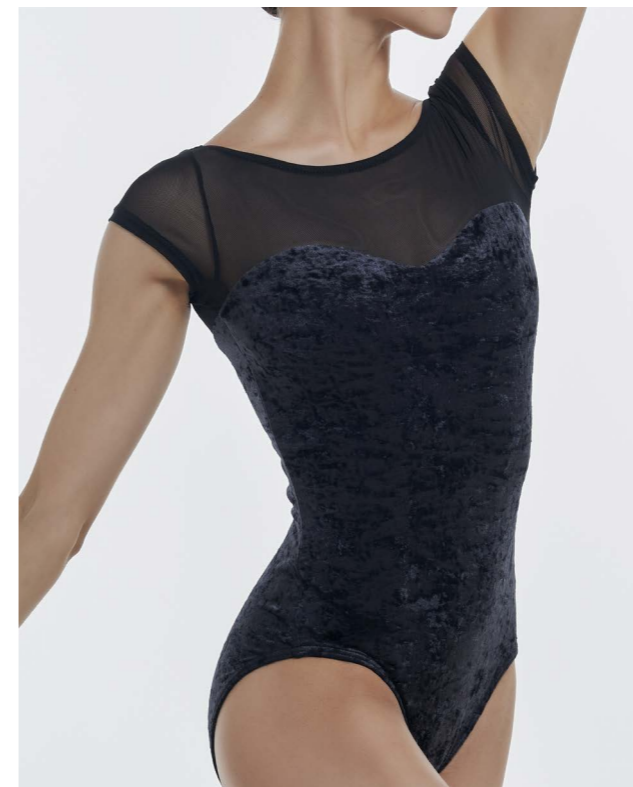
Available in three alluring colorways – Coffee Cream, Red Tea, and Black.



Gamma Leotard

With its delicate cap sleeves, heart-shaped neckline, and a tapered V-back, this leotard embodies timeless grace and sophistication.

Made in full-body velvet, it's a luxurious embrace of comfort and style. Available in two colours, Red Tea and Black.



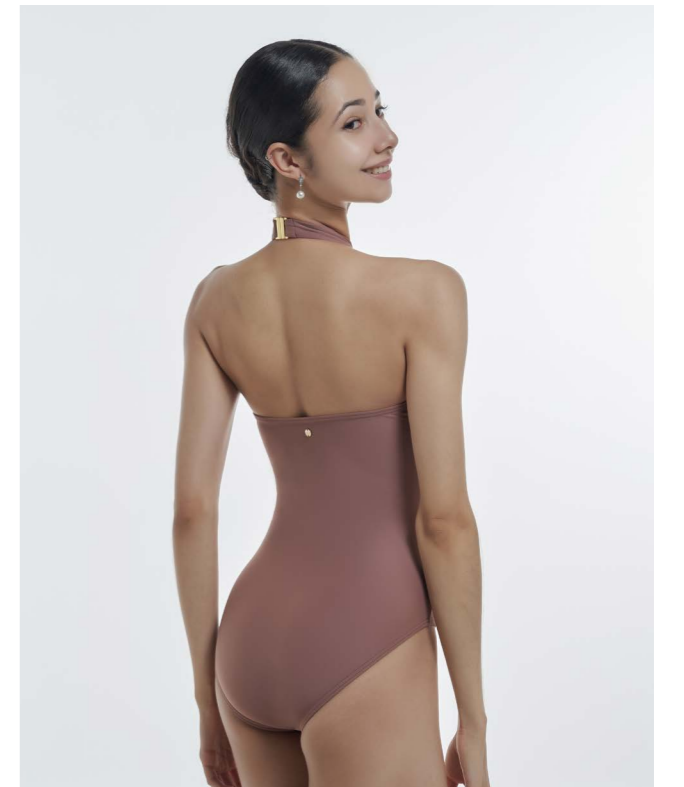
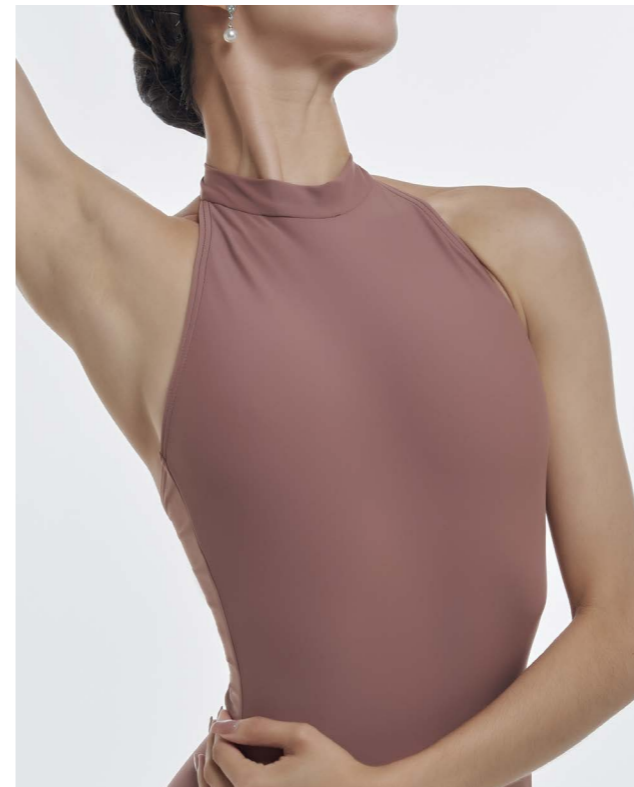
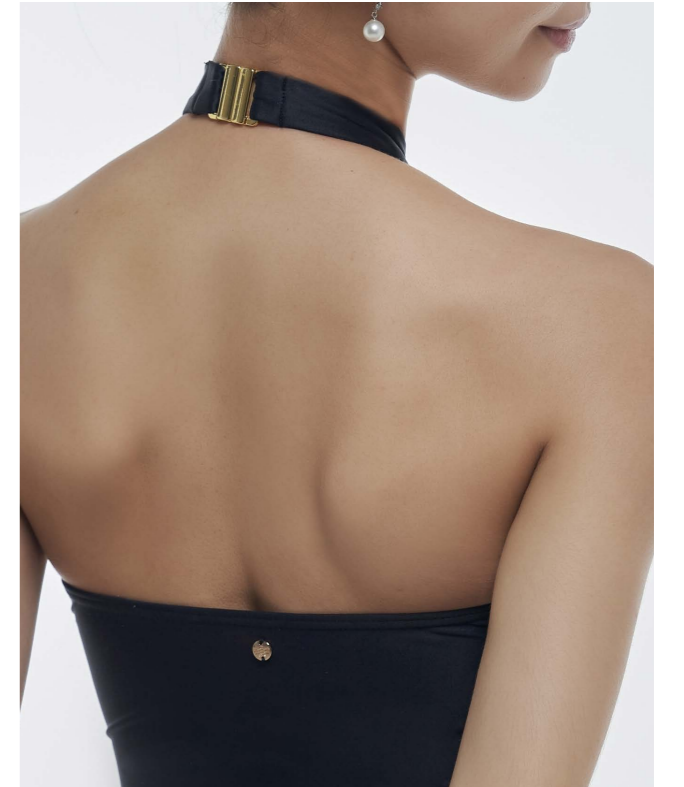
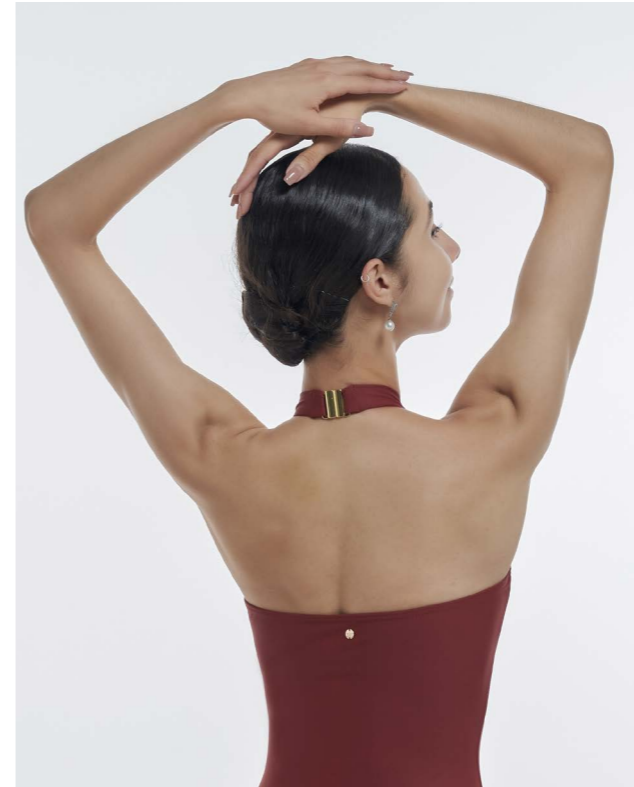


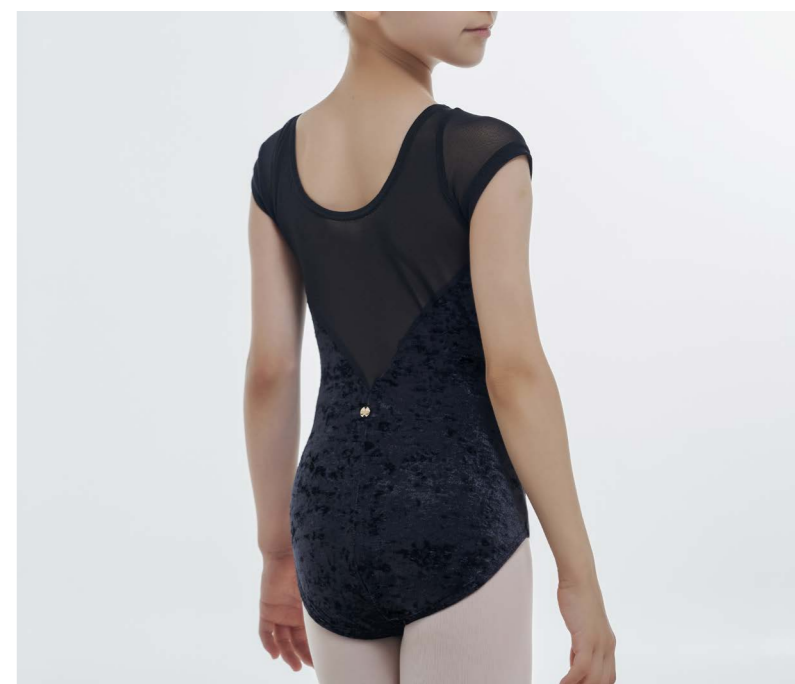
Nina Leotard

A halter neck design that exudes sophistication and comfort, making it perfect for your evening escapades. With a gold clasp, it adds a touch of glamour to your look.

Available in four colours – Coffee Cream (Velvet), Antique, Red Tea, and Black.







Daisy & Gamma
are available in children's sizes too.



GAMMA

PL2302

Cap-sleeved velvet leotard with heartshape neckline and tapered V-back design.

1, 2 (Lining)
XS, S, M, L (Bra Shelf Panel)

- Red Tea
- Black

NINA

PL2303

Halter leotard with a gold clasp, and a straight mid-back.

XS, S, M, L (Bra Shelf Panel)

- Coffee Cream (Velvet)
- Antique (Matt)
- Red Tea (Matt)
- Black (Matt)

DAISY

PL2301

Camisole leotard with front velvet panel, matt nylon spandex body, pinched mesh back design with a loop.

1, 2 (Lining)
XS, S, M, L (Bra Shelf Panel)

- Coffee Cream
- Red Tea
- Black



SIZE CHART

Size	Chest (inches)	Waist (inches)	Hip (inches)	Girth/Crotch (inches)
1	24-25	22-23	25-27	45-47
2	25-27	23-24	27-29	47-49
XS	28-30	23-24	30-32	52-54
S	30-32	24-25	32-34	54-56
M	32-34	25-27	34-36	56-58
L	34-36	27-29	36-38	58-60

Size	Chest (cm)	Waist (cm)	Hip (cm)	Girth/Crotch (cm)
1	61-63	55-58	63-68	114-119
2	63-68	58-61	68-73	119-124
XS	71-76	58-61	76-81	132-137
S	76-81	61-63	81-86	137-142
M	81-86	63-68	86-91	142-147
L	86-91	68-73	91-96	147-152





Photography Yoon6 Photography
Dancers Mara Barros, Chaerin



www.sonatadancewear.com
ig: @sonatadancewear
fb: @sonatadancewearworld
contact: orders@sonata.com.sg

© Copyright 2023 Sonata Dancewear. All products and price information are correct as of print, and may be subject to change. Colours may vary due to screen or monitor's display settings. All products are subjected to availability. All Rights Reserved. Published October 2023.