

ELITE
2023





Elite

Designed for dancers at competitions to enhance the lines of the body.

With a range of styles with various combinations of neck lines, back and straps, you will be able to find something that suits your preference.



Design points

1. Wider neckline and pinched front to show off your shoulder and neck line.
2. Lower back that does not hinder movements, and yet wraps around snugly to make the back look more beautiful.
3. Colours that show maturity and complement the skin tone.



Azuki



Mocha



Pebble



Blueberry



Nero



SL4484 (Mocha)
Convertible Tights (Salmon Pink)
Stretch Form II - Split Sole Canvas Shoes



(L-R) SL4483 (Azuki), SL4485 (Mocha), SL4483 (Blueberry)
Convertible Tights (Pink)

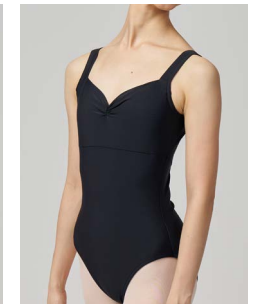
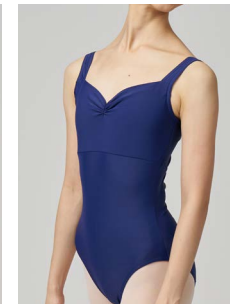


SL4481 Leotard

Camisole
Mesh insert with princess seam till bust line
Empire cut
Mid straight back

[DESIGN POINT]

A faux bodice look, perfect for pairing with a practice tutu for training and rehearsals.

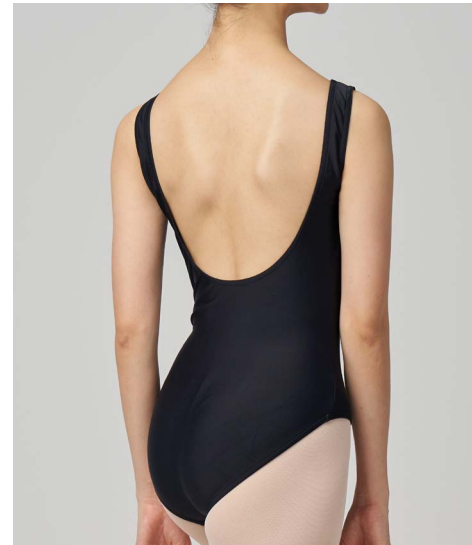


SL4482 Leotard

Thick Straps
Pinch front
Empire Cut
Mid U-Back with empire seam

[DESIGN POINT]

Wide pinched front to show off the shoulder and neck line, with a mid U back and empire seam to hug the back. This style has the highest back in this collection, for a slightly more conservative look.

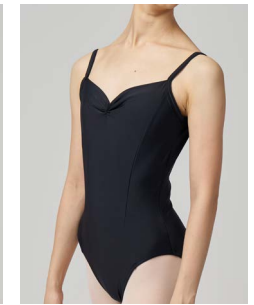
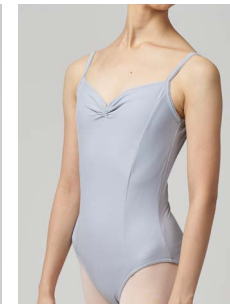


SL4483 Leotard

Tank Leotard
Front Gathers
Low U-Back

[DESIGN POINT]

Our beautiful classic tank leotard (SL4467) pattern, this time with a low U-back to show off the back. Best fit on the most body types.

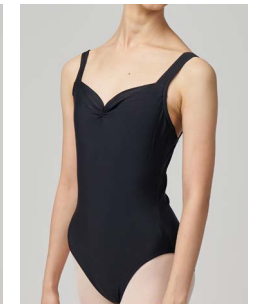
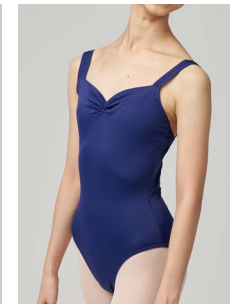


SL4484 Leotard

Camisole
Pinch front
Princess seams
Mid U-Back

[DESIGN POINT]

Our best-selling camisole leotard (SL4436) pattern with a redesigned pinched front to show off the shoulder and neck line. Princess seams to make the body look slimmer.



SL4485 Leotard

Thick Straps
Pinch front
Slight V-back

[DESIGN POINT]

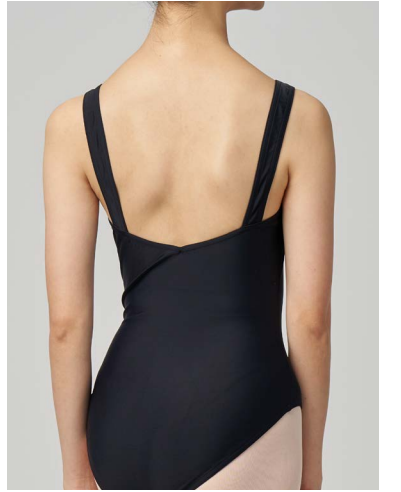
Seamless front and back design for a clean and neat look. Back has a slight V to make the back look longer and more beautiful.



The preferred uniform choice for competitive dancers.

Each style was designed with the consideration of adding a logo embroidery* for schools and studios on the center back of the leotard.

*Only available to Studio Wholesale Program members, with a minimum order.



SL4481

SL4482

SL4483

SL4484

SL4485

SIZE

1, 2, XS, S, M, L

COLOUR



Azuki



Mocha



Pebble



Blueberry



Nero



SIZE CHART

Size	Chest (inches)	Waist (inches)	Hip (inches)	Girth/Crotch (inches)
1	24-25	22-23	25-27	45-47
2	25-27	23-24	27-29	47-49
XS	28-30	23-24	30-32	52-54
S	30-32	24-25	32-34	54-56
M	32-34	25-27	34-36	56-58
L	34-36	27-29	36-38	58-60

Size	Chest (cm)	Waist (cm)	Hip (cm)	Girth/Crotch (cm)
1	61-63	55-58	63-68	114-119
2	63-68	58-61	68-73	119-124
XS	71-76	58-61	76-81	132-137
S	76-81	61-63	81-86	137-142
M	81-86	63-68	86-91	142-147
L	86-91	68-73	91-96	147-152



ELITE

2023

Price List in Singapore Dollars (SGD)

Style Code	Size	Lining	Retail Price (SGD)
SL4481	1, 2	Lining	42
	XS, S, M, L	Lining	54
SL4482	1, 2	Lining	42
	XS, S, M, L	Lining	54
SL4483	1, 2	No Lining	37
	XS, S, M, L	Lining	47
SL4484	1, 2	Lining	42
	XS, S, M, L	Lining	54
SL4485	1, 2	Lining	42
	XS, S, M, L	Lining	54

Prices are subject to change without prior notice.





Photography eustudios.co
Special Thanks Marlupi Dance Academy
Theresa Tan, Singapore Ballet



www.sonatadancewear.com
ig: @sonatadancewear
fb: @sonatadancewearworld
contact: orders@sonata.com.sg

© Copyright 2023 Sonata Dancewear. All products and price information are correct as of print, and may be subject to change. Colours may vary due to screen or monitor's display settings. All products are subjected to availability. All Rights Reserved. Published September 2023.