



A TEREX BRAND



**EMERALD**  
EQUIPMENT SYSTEMS INC.

# 5400BT

HORIZONTAL GRINDER/  
DRUM CHIPPER



WHOLE TREES • STORM DEBRIS • SLASH • STUMPS • C&D

# KEY FEATURES...

The CBI Magnum Force 5400BT is one of the latest offerings in the next generation of grinders, where owners can select from four different field-swappable rotors to accommodate changing materials and processing demands. This unique design provides the flexibility to process an exceptionally wide variety of materials and generate the products that clients demand—all with a single machine. To further its unique design, the PT Tech hydraulic PTO and hydraulic engagement replaces the need for a clutch.

You can go from making high quality mulch from trees and stumps, to chipping stemwood into chips in custom sizes ranging from a constant 1/8" fiber length to constant 1"-3/4" fiber length. Machine operators can also grind highly-contaminated C&D or railroad ties by swapping rotors and screens. This unbelievable versatility guarantees that you will always have the right machine for the job when the market demands change and opportunities come knocking.

The CBI 5400BT gives you more bang for your buck and a better return on your investment. With the push of a button, the unique design of the hog box provides service-friendly, full access for easy daily maintenance (say "goodbye" to scraped knees, sore backs, and banged heads). This feature offers a direct line to lift and remove screens, and greatly simplifies rotor removal through the top of the machine. The screen has been specially designed to be easily removed by unbolting the support plate and pulling the screen out without having to remove the screen frame. The hog chamber has a heavy-duty reinforced housing with 100% continuous welds for strength and corrosion resistance.

## THE WORLD'S MOST RUGGED ROTORS

 <p><b>SOLID STEEL</b> Sixteen 6"x 8" striker plates held in place by two 1-1/4" bolts, designed specifically for contaminated demolition debris, RR ties, and MSW.</p>	 <p><b>FORGED DRUM</b> 3" thick, with 20 weld on Replace-A-Face™ hammers with reversible tips for forestry debris and mulch manufacturing.</p>	 <p><b>2-POCKET CHIPPER</b> Two rows of knives for average chip lengths of 3/4" to 1-1/4" to produce fuel chips from stem wood.</p>	 <p><b>4-POCKET CHIPPER</b> Four rows of knives for short chip lengths of 1/16" to 1/2" to produce short chips from stem wood suitable for pelletizing or pulverized fuel, etc.</p>
--	---	--	--

Upper feed roller; high-torque Poclair hydraulic motor built into roller.

48" wide cleated discharge belt provides unrestricted discharge of ground product.

Caterpillar C-18; 765 HP diesel engine.

Metal Detection System™ and release system.

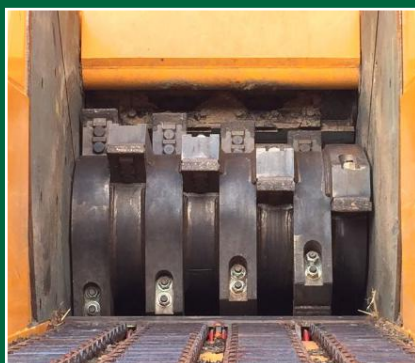
Large capacity feed hopper that handles full-length trees or large material surges with no problem.

AR 450 construction.

High ground clearance.

500mm triple grouser tracks with two speeds.

## HIGH STRENGTH ROTORS FOR HIGH PRODUCTION

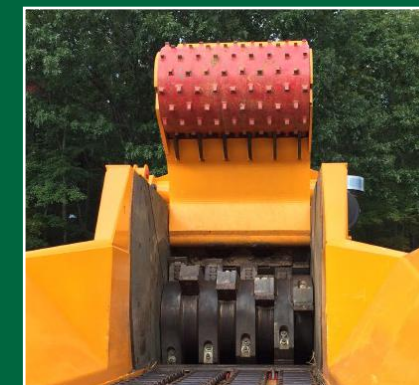


The 40" diameter x 48" long downturn rotor has a forged, thick, high-strength rotor core with 24 weld-on hammers protected by replaceable tip mounting faces arranged in a patented offset helix pattern that cuts the full width of the rotor drastically increasing throughput over the conventional pinned rotor design used by our competitors. CBI's unique bolt-on reversible tip grinds more material for less cost than any other tooth style in the world. Our Replace-A-Face™ hammer system allows the end user to swap out the face independent of the rest of the hammer for quick, easy and inexpensive repairs.

## IQAN electric, hydraulic controls



## Service-friendly, accessible hog box



## Various hammer inserts



# METAL DETECTION SYSTEM



A problem for any industrial grinder has to do with tramp metal entering the grinding chamber and causing significant damage, which leads to down-time. The Metal Detection System™ (MDS) engages within milliseconds whenever the grinder's rotor makes contact with tramp metal.

The rotor is monitored by an adjustable electronic sensor to alert the control system when tramp metal is detected. It will automatically raise the top feed roller and reverse the infeed to allow the operator to find the tramp metal.

## SPECIFICATIONS

### TRANSPORT DIMENSIONS

Width: 8' - 4" (2,540mm)  
 Height: 12' - 3" (3,657mm)  
 Length: 39' - 11.5" (12,100mm)  
 Weight: 70,000 - 76,000 lbs. (approx.)

### DISCHARGE CONVEYOR

Width: 48" (1,219mm)  
 Length: 36' (10,972mm)  
 Height: 15' - 10" (4,826mm)  
 Discharge belt includes magnetic head pulley and chute

### INFEED

Width: 48" (1,219mm)  
 Height: 72" (1,828mm)  
 Conveyor: 16'-0" (4,876mm), 4 strands heavy-duty drag chain

### ENGINE/DRIVE

Caterpillar C18; 765-HP (570 kW)  
 PT Tech PTT-552 gearbox  
 8 groove, 8-V section Arimid belt

### CONTROLS

Parker IQAN™  
 Remote control operated

### HYDRAULICS

Hydrostatic  
 Hydraulic capacity 60 gallons (227 L)

### FAN

Reversing pitch radiator fan that reverses airflow automatically

### EQUIPMENT PROTECTION

Metal Detection System™ (MDS)  
 (2) emergency shutdowns

### ELECTRICAL

Variable speed system

### TRACKS

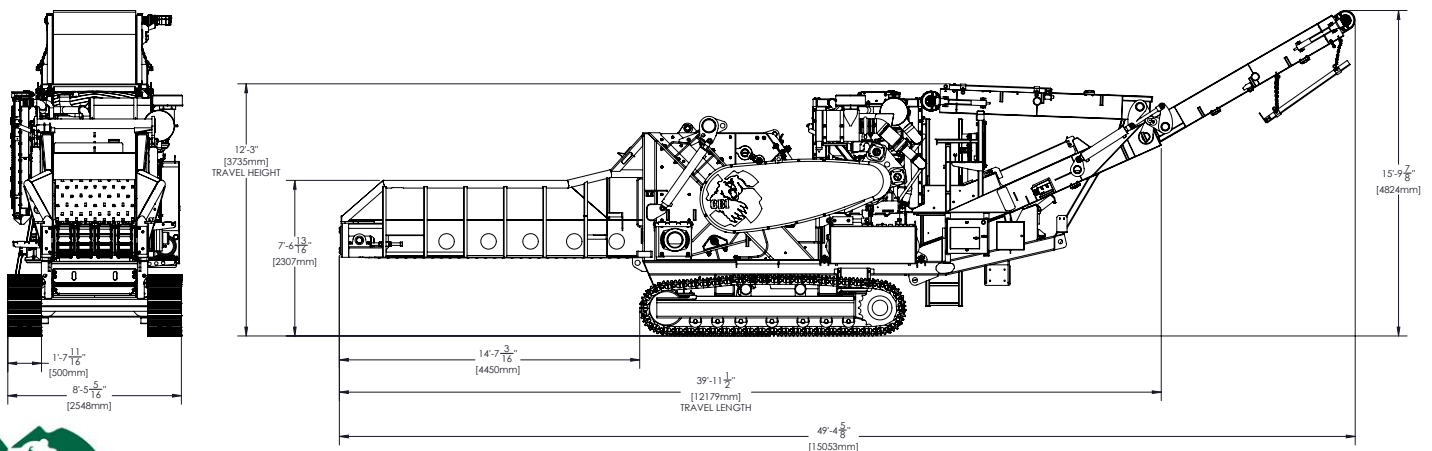
D5S 500mm triple grouser

### FUEL TANK

350 gallons (1325 L)

### OPTIONS

Apron belt also available.



**Continental Biomass Industries**

World's best stationary and portable material recovery systems.

Distributed by:

