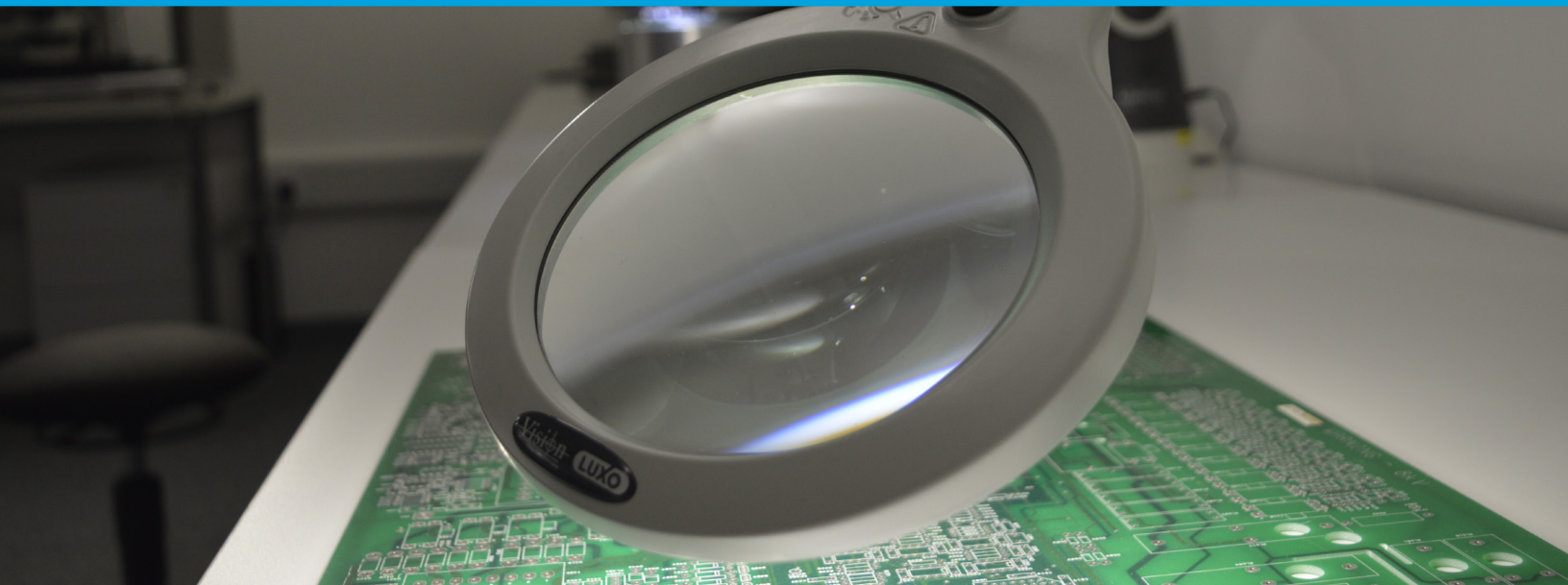


Vision-Luxo

LFM LED G2

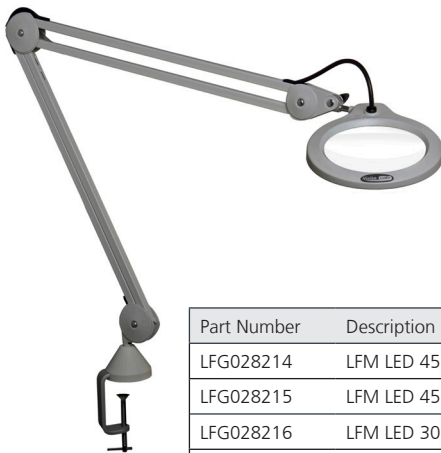
Lighter-duty round lens LED magnifier



LFM LED is Vision-Luxo's most cost-effective LED Magnifier

LFM LED G2 is a lightweight magnifier with all-metal construction, LED light source and a flexible internal spring-balanced arm. It is suitable for professional and industrial applications where cost effective, detailed magnification is required.

The LFM LED G2 is supplied with a 5" glass lens with either a 3 or 5 diopter primary lens. This bench magnifier is equipped with full circle, flicker-free illumination, resulting in virtually shadow-free viewing.



Part Number	Description
LFG028214	LFM LED 45" arm, 3D lens and clamp
LFG028215	LFM LED 45" arm, 5D lens and clamp
LFG028216	LFM LED 30" arm, 3D lens and clamp
LFG028217	LFM LED 30" arm, 5D lens and clamp

Magnification Specifications			
Primary lens diopter	Secondary lens diopter	Total magnification	Focal length
3.0	-	1.75x	13.0"
	4.0	2.75x	5.5"
	6.0	3.25x	4.3"
	10.0	4.25x	2.8"
5.0	-	2.25x	8"
	4.0	3.25x	4.3"
	6.0	3.75x	3.5"
	10.0	4.75x	2"
Technical details			
Light Source	9W dimmable LED modules. 1750 lux at focal length 13" * 4000°K correlated color temperature (CCT). 80 color rendition index (CRI).		
Body Material & Color	Die-cast aluminium housing in light grey.		
Mounting	Edge clamp as standard. Other mounts available.		
Optics	Optics: 3 (1.75x) or 5 (2.25x) diopter, 5" (127mm) diameter lens.		
Arm Technology & Movement	Internal-spring 30" or 45" parallel, 3 pivot K-arm.		
Timer & Dimming	Step dimming 0-50-100%. 9/4 hour shut-off function.		

NOTE: Secondary lenses are available for all models: 4, 6 or 10 diopter STAYS lens can be attached to the primary lens.

www.visioneng.us

Vision Engineering Inc. 570 Danbury Road, New Milford, Connecticut 06776 | Tel: 800-644-7264 | Email: info@visioneng.com | www.visioneng.us