



Chef Gear  TM
GEARED TO DRESS YOU

 **CLASSIC**
CATALOGUE 2024 / 2025



BEHIND THE *Brand*

Chef Gear, a trailblazing chef apparel brand in South Africa, has grown to be the go-to destination for culinary creatives seeking the latest innovations in their attire. Our Classic range is meticulously designed to cater to all your kitchen uniform requirements, blending style, durability, and comfort.

Our brand story is shaped by the vibrant synergy between innovative young designers and the world's top Chefs and hotel Executives. Together, we've crafted uniforms that not only withstand the rigors of the culinary world but also elevate your creative journey in the kitchen. From traditional to modern twists, our Classic range offers the perfect blend of functionality and flair for the culinary artist in you.

At Chef Gear, we take great pride in WorksGroup's commitment to delivering the highest quality garments. Our extensive investments in fabric research and development ensure that our products are technologically best-engineered for the industry. This dedication guarantees that our uniforms are perfectly suited to your dynamic work environment, empowering you to perform at your very best with absolute comfort.

Join us at Chef Gear, where your culinary creativity finds a true companion in our high-quality chef apparel. Elevate your journey in the kitchen with our Classic range, perfectly tailored for the creative minds of South Africa's culinary community. With Chef Gear by your side, the canvas of your kitchen awaits your artistic touch, and the possibilities are endless.

"Geared to Dress You" for success in the kitchen!



Chef Gear TM
GEARED TO
DRESS YOU

TABLE OF CONTENTS

| chef JACKETS

- P2 'The Signature' Unisex & Ladies Classic L/S Chef Jacket
- P3 'The Thymeless' Unisex S/S Classic Chef Jacket
- P3 'The Craftsman' Unisex S/S Pull-Over Utility Chef Jacket
- P4 'The Maestro' Unisex & Ladies L/S Executive Chef Jacket
- P5 'The Alchemist' Unisex S/S Executive Chef Jacket
- P5 'The Artisan' Unisex L/S Premium Executive Chef Jacket
- P6 'The Modern Master' Unisex L/S Mandarin Collar Chef Jacket

| chef TROUSERS

- P8 Classic Baggy Pants
- P8 Ladies Chef Pants
- P9 Executive Chef Trousers
- P10 Men's & Ladies Chinos

| golf SHIRTS

- P10 Men's & Ladies Pique Golf Shirt

| chef APRONS

- P13 Basic Bib Apron
- P13 Designer Adjustable Bib Apron
- P14 Bistro Apron
- P14 Bar Apron

| chef ACCESSORIES

- P16 Basic Chef Beanie
- P16 Classic Chef Hat
- P17 Skull Cap
- P17 Chef Neck Tie
- P18 Disposable Chef Hat
- P18 Ladies Hair Wrap
- P18 Gatsby Cap
- P18 Fidel Cap

| safety FOOTWEAR

- P19 Executive, Sous & Main Kitchen

| user GUIDES

- P23 Measuring Chart
- P24 Branding Guide





CHEF JACKET COLLECTION



Chef Gear offers a range of chef jackets that redefine kitchen wear. Our jackets are designed with today's chefs in mind, combining style and practicality effortlessly.

Discover the ideal mix of comfort, durability, and sophistication in each jacket.

Our Classic Range of chef jackets are meticulously made using a Polycotton blend of 65% polyester and 35% cotton, guaranteeing breathability in the most scorching kitchen environments and exceptional long-lasting durability.

We have unique cuts for both men and women, ensuring a comfortable and personalised fit.



- Long Sleeve
- Short Sleeve
- Pullover
- Ladies Cut
- Executive
- Egyptian Cotton

***Chef Gear** –
Where comfort meets
culinary style*



LONG SLEEVE DOUBLE-BREADED CHEF JACKET
unisex fit

A fresh design of an old classic, this chef jacket offers a tailored fit for the modern chef. The jacket is the ultimate in chefwear that will have you moving with ease, and feeling comfortable for your entire shift.



Item Code: CUL201

XS	S	M	L	XL	2XL	3XL	4XL	5XL
✓	✓	✓	✓	✓	✓	✓	✓	✓

- 210gsm 65/35 Polycotton
- Thermometer & Pen Pocket
- Turn-back Cuffs
- Front Chest Pocket
- Tailored Fit
- Branding Available



the Signature

CLASSIC Chef Jacket

3/4 SLEEVE DOUBLE-BREADED CHEF JACKET
ladies fit

The classic ladies' chef jackets are perfectly tailored with a tapered waist line, flared hip, and a double-breasted front that allows for free movement without sacrificing fit.



Item Code: CUL204

XS	S	M	L	XL	2XL	3XL	4XL	5XL
✓	✓	✓	✓	✓	✓	✓	✓	✓

- 210gsm 65/35 Polycotton
- Thermometer & Pen Pocket
- Turn-back Cuffs
- Bust & Waist Darts
- Tailored Fit
- Branding Available



the Signature

CLASSIC Chef Jacket

the Maestro

LONG SLEEVE EXECUTIVE CHEF JACKET
unisex fit

The classic executive chef jacket is all about comfort, convenience and durability. Pop-buttons offer improved functionality to enable executive chefs to work with ease.

customise with
COLOUR
POPs



- White
- Black



Item Code: CUL203

XS	S	M	L	XL	2XL	3XL	4XL	5XL
✓	✓	✓	✓	✓	✓	✓	✓	✓

- 210gsm 65/35 Polycotton
- Thermometer & Pen Pocket
- Removable Pop Buttons
- Front Chest Pocket
- Tailored Fit
- Turn-back Cuffs

EXECUTIVE Chef Jacket

LADIES 3/4 SLEEVE EXECUTIVE CHEF JACKET
ladies cut

The executive ladies' chef jackets are perfectly tailored with a tapered waist line, flared hip, and a double-breasted front that allows for free movement without sacrificing fit.

customise with
COLOUR
POPs



- White
- Black



Item Code: CUL220

XS	S	M	L	XL	2XL	3XL	4XL	5XL
✓	✓	✓	✓	✓	✓	✓	✓	✓

- 210gsm 65/35 Polycotton
- Thermometer & Pen Pocket
- Double-breasted
- Front Chest Pocket
- Tailored Fit with Darts
- Pop Buttons

EXECUTIVE Chef Jacket

the Maestro

the Thymeless

CLASSIC Chef Jacket



SHORT SLEEVE DOUBLE-BREASTED CHEF JACKET

unisex fit

The basic short sleeve jacket boasts all the traditional features you have come to expect in a professional chef jacket. The refreshingly cool look and feel of short sleeves has you ready for action in even the hottest kitchens.



White



Black



Item Code: CUL202

XS	S	M	L	XL	2XL	3XL	4XL	5XL
✓	✓	✓	✓	✓	✓	✓	✓	✓

- ✓ 210gsm 65/35 Polycotton
- ✓ Thermometer & Pen Pocket
- ✓ Double-breasted

- ✓ Front Chest Pocket
- ✓ Tailored Fit
- ✓ Branding Available

the Craftsman

UTILITY Chef Jacket



SHORT SLEEVE PULLOVER CHEF JACKET

unisex fit

Designed for comfort, this easy-wear, pull-over utility chef jacket features rust-free studs and includes a thermometer and pen pocket.



White



Black



Item Code: CUL205

XS	S	M	L	XL	2XL	3XL	4XL	5XL
✓	✓	✓	✓	✓	✓	✓	✓	✓

- ✓ 210gsm 65/35 Polycotton
- ✓ Thermometer & Pen Pocket
- ✓ Metal Press Studs

- ✓ Short-sleeve
- ✓ Loose-fitting
- ✓ Branding Available

limited edition

LONG SLEEVE MANDARIN COLLAR CHEF JACKET
unisex fit

Our yachti chic mandarin collar chef jacket, where elegance meets functionality and comfort, is ideal for the chef on the-go. Designed for the casual-but-still-professional chef, this jacket has a distinctive design for a sleek culinary statement with concealed front buttons and jetline pockets.

“Cooking is an art, but do it in style.”



the Modern Master

EXECUTIVE Chef Jacket

Item Code: CUL233

XS	S	M	L	XL	2XL	3XL	4XL	5XL
SQ	✓	✓	✓	✓	✓	✓	SQ	SQ

- Popcorn Suiting (57% Polyester, 28% Rayon, 15% Sorona)
- Front Jet Pocket
- Thermometer & Pen Pocket
- Moisture Management Cool Vents
- Concealed Buttons
- Lightweight & Casual
- Limited Edition

“

quality kitchen essentials for the *passionate chef*

”



the Alchemist

EXECUTIVE Chef Jacket



SHORT SLEEVE EXECUTIVE CHEF JACKET

unisex fit

The classic short sleeve jacket boasts all the traditional features you have come to expect in a professional chef jacket. The refreshingly cool look and feel of short sleeves has you ready for action in even the hottest kitchens.

- 210gsm 65/35 Polycotton
- Thermometer & Pen Pocket
- Removable Pop Buttons
- Front Chest Pocket
- Tailored Fit
- Branding Available

Item Code: CUL219

XS	S	M	L	XL	2XL	3XL	4XL	5XL
✓	✓	✓	✓	✓	✓	✓	✓	✓

the Artisan

EXECUTIVE Chef Jacket



Also available in
Egyptian Cotton



LONG SLEEVE DOUBLE-BREASTED CHEF JACKET

unisex fit

The Premium Executive jacket is all about standing out from the crowd, convenience and durability. The added discreet side moisture management cool vents allows for maximum comfort and will keep you cool in the hottest of kitchens. Change the black pop button to a coloured button to add some flair if you wish!

- 210gsm 65/35 Polycotton OR Egyptian Cotton
- Thermometer & Pen Pocket
- Moisture Management Cool Vents
- Black Piping Cord
- Tailored Fit
- Branding Available

Item Code: CUL218 (Polycotton Twill)
CUL230 (Egyptian Cotton)

XS	S	M	L	XL	2XL	3XL	4XL	5XL
x	✓	✓	✓	✓	✓	x	x	x



CHEF TROUSERS COLLECTION



- Baggy Fit
- Ladies Bootleg
- Chinos
- Button/Zip & Belt Loops



The leading brand for kitchen uniforms in SA.


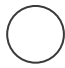

At Chef Gear our chef pants are more than just uniform; they're a symbol of culinary excellence. Crafted for comfort and durability, our chef pants are the perfect companion for culinary professionals.

Explore our collection and experience the fusion of style and functionality in every stitch.

CLASSIC BAGGY CHEF PANTS
unisex fit

One of our most popular apparel items, the classic baggy is generously cut to move with you all day long, designed to maximise comfort and durability.



-  Black
-  White **NEW!**
-  Black & White Check



Item Code: CUL206

XS	S	M	L	XL	2XL	3XL	4XL	5XL
✓	✓	✓	✓	✓	✓	✓	✓	✓

- 210gsm 65/35 Polycotton
- Elasticated Waist
- Inseam Slanted Front Pockets
- Drawstring Waistband
- Back-right Pocket
- Loose Fit

CLASSIC Baggy Pants

LADIES FITTED CHEF PANTS
ladies fit

Specifically designed for women, the ladies' chef pants feature a flare leg for a more fashionable look, ensuring you are ready to commit to long hours in the kitchen.



Item Code: CUL207

XS	S	M	L	XL	2XL	3XL	4XL	5XL
✓	✓	✓	✓	✓	✓	✓	✓	✓

- 210gsm 65/35 Polycotton
- Elasticated Waist
- Inseam Slanted Front Pockets
- Drawstring Waistband
- Double Back Pockets
- Bootleg/Tailored Fit



LADIES Chef Pants



Black



FORMAL CHEF TROUSER

unisex/men's fit

The formal chef trouser is designed to meet the demands of a true executive chef. They are durable enough to handle the toughest day in the kitchen whilst maintaining a professional appearance in both the dining area or client meetings. Originally designed as a 'mens' fit, however many ladies who love the 'high-waist fit', absolutely love these!

- 210gsm 65/35 Polycotton
- Metal Zip Closure
- Belt Loops
- x2 Back Patch Pocket
- Half-elasticated Waistband
- Side Pockets

Item Code: CUL208

XS	S	M	L	XL	2XL	3XL	4XL	5XL
✓	✓	✓	✓	✓	✓	✓	✓	✓



“ Who said you had to fill his shoes? Wear your own shoes. They're bound to fit better. Walk your own path, your own way and you'll be more likely to get to where you need to be. ”

FLAT FRONT CHINO PANTS
mens fit

Whether you need a formal look for work, or that casual outfit for the weekends, these Flat Front Chino Pants can offer you both comfort and style. Perfect for front of house, restaurant management or back of house.



Item Code: CUL238

30	32	34	36	38	40	42	44	46
✓	✓	✓	✓	✓	✓	✓	✓	✓



Black



Stone



Navy



Khaki



- Polycotton
- Flat Front
- Slanted Side Pockets
- Button Down Back Pocket
- Tailored Fit
- Breathable & Colourfast

Chino Pants

FLAT FRONT CHINO PANTS
ladies fit

Whether you need a formal look for work, or that casual outfit for the weekends, these Flat Front Chino Pants can offer you both comfort and style. Perfect for front of house, restaurant management or back of house.



Item Code: CUL246

28	30	32	34	36	38	40	42	44	46
✓	✓	✓	✓	✓	✓	✓	✓	✓	✓



Black



Stone



Navy



- 97% Cotton, 3% Spandex
- Flat Front
- Slanted Side Pockets
- Back Jet Pockets
- Tailored Fit
- Breathable & Colourfast

Chino Pants

PIQUE Golf Shirts



PIQUE GOLF SHIRT mens fit

A true Legend and a wardrobe essential for restaurants that will never go out of style. Features include a classic regular fit short sleeve design, polycotton pique fabric, three button-down plackets, and a knitted two-ridge collar.

Personalise your Gear with Embroidery or Digital Transfer Print.



- 65/35 Polycotton 175gsm
- Crease Resistant
- Easy to clean & Maintain
- Knitted Two Ridge Collar
- Standard Fit
- 3-Button Placket

Item Code: CUL234

XS	S	M	L	XL	2XL	3XL	4XL	5XL
x	✓	✓	✓	✓	✓	✓	✓	✓

PIQUE Golf Shirts



PIQUE GOLF SHIRT ladies fit

An enduring classic that will forever remain a staple in restaurant attire, this legendary piece boasts timeless features, including a regular fit, short sleeves, polycotton pique fabric, a three-button front closure, and a finely knitted two-ridge collar.

Personalise your Gear with Embroidery or Digital Transfer Print.



- 65/35 Polycotton 175gsm
- Crease Resistant
- Easy to clean & Maintain
- Knitted Two Ridge Collar
- Standard Fit
- 3-Button Placket

Item Code: CUL242

XS	S	M	L	XL	2XL	3XL	4XL	5XL
x	✓	✓	✓	✓	✓	✓	✓	✓



CHEF APRONS COLLECTION

Explore Chef Gear's exclusive line of aprons, crafted for both comfort and enduring performance in the culinary industry.

These aprons boast extended tie straps and capacious pockets, offering the utmost convenience for all your kitchen necessities.

With a range of styles and a diverse palette of colours to harmonise with your kitchen attire.



*Affordable,
durable & stylish
Chef apparel*



- Bib Standard
- Bib Adjustable
- Bar
- Bistro



CLASSIC Bib Apron

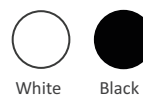


CLASSIC BIB APRON
unisex fit

The basic bib apron is constructed from durable polycotton and will definitely keep you "covered" in any environment.



- ☑ 65/35 Polycotton 210gsm
- ☑ Large front patch pocket center divide
- ☑ Extra long tie straps
- ☑ 85cm Length
- ☑ Easy to clean
- ☑ Budget friendly apron



Item Code: CUL209

ADJUSTABLE Bib Apron



ADJUSTABLE BIB APRON
unisex fit

The designer bib apron features an adjustable neck closure as well as extra-long ties, to accommodate all sizes and statures.



- ☑ 65/35 Polycotton 210gsm
- ☑ Large front patch pocket with centre divide
- ☑ Extra long tie straps
- ☑ 85cm Length
- ☑ Easy to clean
- ☑ Adjustable Neck

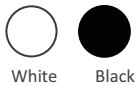


Item Code: CUL210

BISTRO APRON

unisex

Simple, form flattering lines and practical features including a high patch pocket with centre divide and extra long wrap-around waist ties make for an eye-catching bistro apron .



- 65/35 Polycotton 210gsm
- Large Right patch pocket- center divide
- Extra long tie straps
- 79cm Length
- Easy to clean
- Suited for Front of House

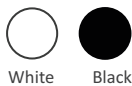
Item Code: CUL211

BISTRO Chef Apron

BAR APRON

unisex

This functional, hardworking bar apron is perfect for everyday challenges featuring a patch pocket with centre divide and extra long wrap-around waist ties.



- 65/35 Polycotton 210gsm
- Patch pocket- center divide
- Extra long tie straps
- 79cm Length
- Easy to clean
- Shorter Length

Item Code: CUL212

BAR Apron



ACCESSORIES COLLECTION



Chef Gear offers a diverse selection of timeless chef headwear suitable for both men and women.

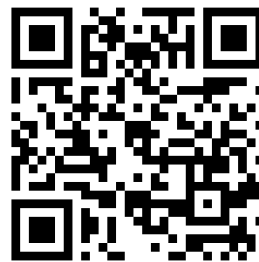
Within our range, you'll discover a spectrum of options, including the classic chef hat, beanies, skull caps, and hair wraps, all thoughtfully designed to accommodate various hairstyles in a culinary setting.

Select the ideal headwear for your culinary team.

- Beanie
- Skull Cap
- Classic 'Mushroom'
- Hair Wrap
- Paper Hats
- Fashion Caps

“The History of the Classic Chef’s Hat”

read article here:



SCAN

CLASSIC CHEF BEANIE

unisex fit

The classic chef beanie can be easily co-ordinated with all our chef apparel. This traditional favourite features an elasticated back for added comfort.



White Black

- 65/35 Polycotton 210gsm
- Durable and longlasting
- Elasticated back
- Easy to clean

Item Code: CUL213



CLASSIC Chef Beanie

CLASSIC CHEF HAT

unisex fit

Look professional in the kitchen with the authentic chef hat, in classic mushroom style, constructed from a comfortable polycotton blend. the hat features an adjustable velcro closure at the back for the ultimate comfort fit.



White Black

- 65/35 Polycotton 210gsm
- Mushroom Style
- Velcro Closure
- Easy to clean

Item Code: CUL214



CLASSIC Chef Hat

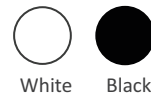
SKULL Cap



- 65/35 Polycotton 210gsm
- 5 Panel Cap
- Adjustable back ties
- Easy to clean

SKULL CAP
unisex fit

This hip alternative to the classic chef hat is made from a comfortable polycotton blend and features panelled construction. The cap ties at the back to accommodate various fit options.



White Black

Item Code: CUL215

CLASSIC Chef Neck Tie



- 65/35 Polycotton 210 gsm
- Durable and longlasting
- Triangular Shape
- Easy to clean

CHEF NECK TIE
unisex fit

The classic triangular neckerchief compliments any look and is extremely practical when temperatures rise. The neckerchief can be tied in various ways to create a unique look.



White Black

Item Code: CUL216

DISPOSABLE CHEF HAT
unisex fit

Breathable and durable, the paper pleated disposable chef hats can be used repeatedly! Convenient pack of 50 for easy daily use.



- Pack of 50 units
- Pleated
- Disposable
- 16cm Height



White

Item Code: CUL217

DISPOSABLE Chef Hat

STRETCH HAIR WRAP
unisex fit

The hair wrap is an easy solution to cover all different hair styles to keep you neat and tidy in the kitchen. Simply slip the stretch tubular design over your hair and tuck in or tie at the back.



- Stretch Cotton
- Covers all hairstyles
- One size fits all



Black



White

Item Code: CAPS003

STRETCH Hair Wrap



GATSBY CAP
unisex fit

Ideal for chefs and front-of-house staff, this hat combines timeless style with practicality, adding a touch of elegance to any uniform.

- 100% Heavy Brushed Cotton
- Belt Buckle & Tuck In
- Satin Lined

Item Code: CAPS004



Black



Stone



Navy



Charcoal

GATSBY Cap



FIDEL CAP
unisex fit

Elevate your front-of-house uniform with our Military Style Hat, the perfect blend of contemporary fashion and professional flair.

- 100% Brushed Cotton Twill
- Military Style
- Gun Metal Eyelets
- Self Fabric Velcro Strap

Item Code: CAPS005



Khaki



Black



Stone



Red



Navy



Charcoal

Other: Olive, Military Brown, Military Green

FIDEL Cap



FOOTWEAR COLLECTION



- Official **BIRKENSTOCK** supplier
- Safety Shoes
- Slip-on Shoes
- Ladies Safety Shoes
- Safety Sneakers
- Fashion Sneakers



Explore Chef Gear's exquisite range of non-slip footwear, specially crafted to meet the discerning needs of chefs seeking unparalleled levels of comfort and unmatched durability.

Our footwear is meticulously designed to provide an exceptional combination of style and practicality, ensuring you can focus on your craft with peace of mind.



BIRKENSTOCK

BIRKENSTOCK Boston Leather Super Grip



BIRKENSTOCK Super Birki PU



DOT Chef Shoe

SPECIFICATIONS

- Original BIRKENSTOCK Soft Footbed
- Super Grip non-slip sole
- Anatomically Shaped
- Upper: Smooth Leather
- Lining: Suede
- Sole: Eva
- Sizes: 2.5 - 14.5

- Original BIRKENSTOCK Soft Footbed
- Removable, Anatomically Formed cork Footbed
- Non-slip, Oil-and Grease-Resistant Sole
- PU Upper (Polyurethane)
- Clog Washable at up to 80°
- Sizes: 2.5 - 14.5

- Unisex
- Non-steel toe
- Lightweight and flexible Dual Density PU Sole
- Slip Resistant
- Microfibre Upper
- Sizes 3 - 12



REBEL Glider



SISI PARIS Ladies Safety Shoe



REBEL ZURI Ladies Safety Shoe (Black)

SPECIFICATIONS

- Micro-fibre upper with padding
- Dual density Poly-Urethane Sole
- Composite toe-cap
- Footbed with extra thick PU foam with 2mm memory foam pillow top
- Unisex shoe
- Sizes 3-13

- Oil and Acid Resistant
- Single Density PU Sole
- Antistatic
- Sizes 3-8

- Micro-fibre upper, with Velcro strap overlay
- Dual density Poly-Urethane Sole
- 200J steel toe-cap
- Moulded PU, with contoured heel and arch
- Sizes 3-8



DOT Radon
Safety Shoe



LE MAITRE Robust
Safety shoe



REBEL Economy FX-S2
Safety shoe

SPECIFICATIONS

- Slip Resistant
- Steel Toe Cap
- Oil & Acid Resistant
- Shock Absorbent
- Antistatic
- Sizes 3 - 12

- Slip Resistant
- Steel Toe Cap
- Oil & Acid Resistant
- Genuine Leather Upper
- Antistatic
- Sizes 3 - 12

- Highly durable full leather upper
- Lightweight dual density polyurethane+ sole
- Extremely slip resistant
- Tailbrelle moisture wicking lining
- SABS approved & ISO certified
- Sizes 3 - 12

CANVAS Sneakers

- Rubber sole and toecap
- Twin-needle stitching
- Padded insoles
- Metallic eyelets
- Sizes 2 - 13



DIGITAL BRANDING AVAILABLE



REBEL Sneaker Hi-Top
Light Weight Safety Sneaker



REBEL Sneaker Lo-Top
Light Weight Safety Sneaker



PVC DELI Slip-On Shoe

SPECIFICATIONS

- Supreme Comfort
- Steel Toe Cap
- Oil Resistant
- Microfibre
- Shock Absorbent
- Antistatic
- Slip Resistant
- Sizes 4 - 13

- Supreme Comfort
- Steel Toe Cap
- Oil Resistant
- Microfibre
- Shock Absorbent
- Antistatic
- Slip Resistant
- Sizes 4 - 13

- Blood, Fat and Oil Resistant
- Anti Slip
- Moulded Inner Sole
- Sizes 3 - 12

Chef's Table Blog

Offers enthusiastic chefs, future chefs or anyone loving food some handy tips around the kitchen, caring for your chef uniform, industry news, recipes and more.



www.chefgear.co.za



EMBROIDERY ←

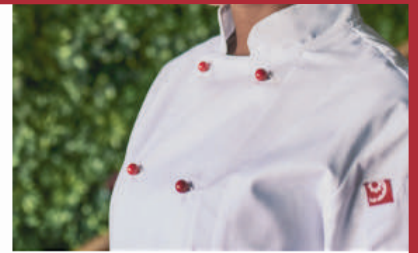
ON-SITE FITTINGS ←

PACK BY EMPLOYEE ←

SHOP ONLINE ←

NATIONWIDE SHIPPING ←

Customise your gear with
**COLOUR
POPS**



*custom colours can be made to order



Get a Sizzling
5% Discount
on Chef Gear!

GETCHEFGEARED

Enter code at checkout.

T&C's: Discount available online only, on Chef Gear items. Footwear, Golfers, Chino's, Fashion Headwear not included. One use per customer. Not available to Resellers. Discount cannot be used with another promotion.



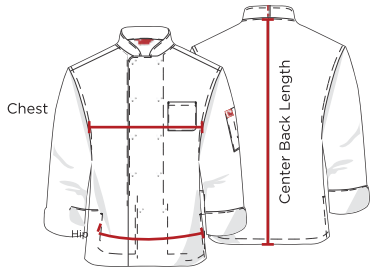
Measurement Chart

Please bear in mind when placing your order that these are slim fit garments, should you not require slim fit please order one size up.

*Measurements are in centimeters and may vary slightly on design. Chest, Waist and Hip measurements are to be taken right around the body. Do refer to measurements given for specific items above before purchase. Please consult your Sales Representative or Chef Gear directly to arrange a fitting for you.

Unisex Fit | Double-breasted Chef Jacket

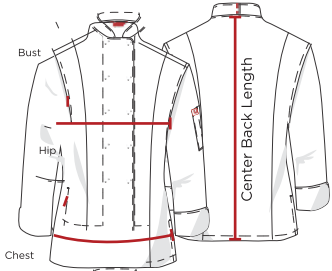
Item Codes: CUL201 / CUL202 / CUL203 / CUL219



Area of Measurement	XS	S	M	L	XL	2XL	3XL	4XL	5XL
Chest	68-72	72-80	81-90	91-101	102-110	111-119	120-128	129-137	138+
Hip	67-74	74-84	85-94	95-103	104-117	118-125	126-133	134-140	141+

Ladies Fit | Double-breasted Chef Jacket

Item Codes: CUL204 / CUL220



Area of Measurement	XS	S	M	L	XL	2XL	3XL	4XL	5XL
Bust	80-86	87-91	92-99	100-107	108-111	112-118	119-124	125-130	131+
Hip	89-94	95-100	101-106	107-115	116-123	124-130	131-138	139-144	145+

Unisex Fit | Utility Pullover Chef Jacket

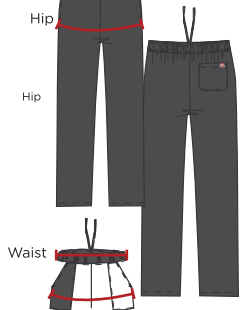
Item Codes: CUL205



Area of Measurement	XS	S	M	L	XL	2XL	3XL	4XL	5XL
Chest	75-83	84-90	91-99	100-108	109-119	120-129	130-139	140-148	149+
Hip	76-84	85-93	94-103	104-113	114-124	125-134	135-146	147-152	153+

Unisex Fit | Classic Baggy Pants

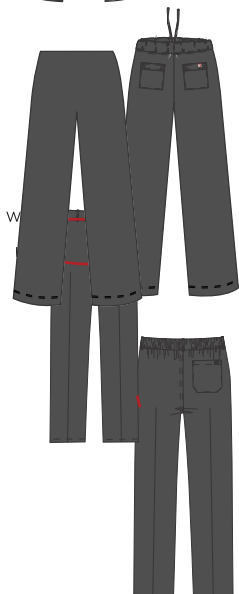
Item Codes: CUL206



Area of Measurement	XS	S	M	L	XL	2XL	3XL	4XL	5XL
Waist	78-86	87-95	96-106	107-116	117-124	125-132	133-141	142-152	153+
Hip	82-90	91-99	100-108	109-115	116-125	126-133	134-140	141-150	151+

Ladies Fit | Fitted Chef Pants

Item Codes: CUL207



Area of Measurement	XS	S	M	L	XL	2XL	3XL	4XL	5XL
Waist	79-84	85-90	91-95	96-104	105-113	114-119	120-124	125-130	131+
Hip	88-97	98-102	103-108	109-114	115-119	120-125	126-131	132-138	139+

Unisex / Mens Fit | Formal Chef Trouser

Item Codes: CUL208

Area of Measurement	XS	S	M	L	XL	2XL	3XL	4XL	5XL
Waist	59-69	70-78	79-86	87-98	98-111	112-127	128-138	139-150	151+
Hip	70-78	79-87	88-97	98-104	105-112	113-125	126-137	138-146	147+

- Embroidery production lead times are **5 - 7 working days** from full payment & approval of artwork (CAD).
- No Embroidered garments can be returned or exchanged.
- A CAD file (artwork specifications) will be sent for your approval before work will commence.
- Should you require a physical embroidery sample, please request this when sending your CAD approval. Allow 2-3 working days additionally for sample productions.
- Your approval of the CAD file will cover the following specifications where applicable. A screenshot or Word doc will not be accepted as artwork:
 1. **Placement** of logo on the garment
 2. **Spelling** of names, slogans, titles
 3. **Artwork size** in width / height
 4. **Colour** correctness -
 5. **Font** style / name. We require your CMYK/RGB colour codes.
 6. **For name embroidery**, the jacket style, size and quantity needs to be checked carefully for each person.

Disclaimer:

Although we strive for perfection, embroidery is an artistry and mishaps can occur. Such as needles that break causing tears in the garments. We are committed to have any issues resolved as they occur and should any production faults occur on your order, we will notify you in due course.

If you are not satisfied with your order, please contact us at chefgear@worksgroup.co.za and we will gladly assist you.

Artwork Requirements

- We require your original artwork in hi-resolution (high quality) in formats JPEG or PNG or PDF.
- PDF is required in Vector format. (A PDF can either be a vector or a raster file, depending how it was saved. When zooming in (200% or larger) and the edges are blurry, then it is not a vector PDF. The image should appear solid and crisp if it is a vector file.)

Digitized logo example



FAQs

1) Why is my order taking 5 to 7 working days to embroider?

A pre-production quality check of garments is done before being transported to our Embroidery house. Embroidery orders are treated on a first-come-first-serve basis and dependent on available production space.

To ensure you receive high quality embroidered garments, a final quality check is done once goods have been received back from our Embroidery house. Should any flaws be found, items will be sent back to be corrected.

2) Why is a setup/digitizing fee charged?

A once-off setup fee for the order is charged to calculate the required stitch count for your name or logo and to prepare your artwork for embroidery.

3) What is digitizing?

Digitizing is the process where we take your logo/text and create actual stitch paths for the machine to use to sew your design onto the garment.

4) How big should my artwork be?

Sizing recommendation depends on the proportions of your logo. The recommended size is 10-15 cm wide on jackets and 10 - 20 cm wide for aprons. We can embroider up to 30cm wide.

5) Can I have one garment embroidered?

Yes, standard lead times, pricing and shipping applies. If it is a first time embroidery a setup/digitizing fee will be charged.



@ChefGear.SA



@chefgear.sa



@chefgear-sa

Elevate your culinary style with

Chef Gear  TM
GEARED TO DRESS YOU



SCAN CODE TO VIEW
ONLINE STORE



A DIVISION OF



Works Group

GEARED TO DRESS YOU

www.worksgroup.co.za

